

Explosionproof Circuit Breaker Enclosures

**CIRCUIT BREAKER ENCLOSURE ONLY**

Breaker Frame Size	Trip Range	Enclosure
100	15-70	XCBA-N4
100/150	80-150	XCBB-N4
225/250	70-250	XCBC-N4
400	100-225	XCBD-N4
600	250-400	XCBE-N4
800	400-800	XCBF-N4
1200	800-1200	XCBG-N4

FUSIBLE DISCONNECT SWITCHES

Description	Suffix	Available On Circuit Breaker	Available On Disconnect Switch	Universal Enclosure Only
Auxiliary Switch 1A and 1B Contacts	AS1	•	•	
Auxiliary Switch 2A and 2B Contacts	AS2	•	•	
Bell Alarm (Specify No. of Contacts)	BA	•		
Breather/Drain - installed in bottom	E	•	•	•
Breather and Drain installed	EE	•	•	•
High Interrupting Capacity Breaker	HI	•		
Epoxy Coating (External), (Specify Color)	LI	•	•	•
Epoxy Coating (Internal and External), (Specify Color)	L2	•	•	•
Substitute MCP for Breaker	M	•		
Phenolic Nameplate (Specify Legend)	NP	•	•	•
Shunt Trip (Specify Voltage Rating)	ST	•		
Undervoltage Release (Specify Voltage Rating)	UV	•		
Other / Special	Z	•	•	

DATA DIMENSIONS

Catalog #	Inside Nom. Dimensions			Overall Dimensions			Mounting Lug CL to CL		Mtg. Bolt Size	Conduit Dimension		Conduit # Holes Top/Bot		Ship Weight (lbs.)
	W	L	D	A	B	C	E	F		D	G	Size		
XCBA-N4	6	11	5	9 ¼	14 ¼	9	9 ⅝	7 ½	7/16	2 ½	—	1 ¼	1	28
XCBB-N4	6	13	5	9 ¼	16 ¼	9	9 ⅝	9 ½	3/8	2 ½	—	2	1	31
XCBC-N4	7	18	5	10 ¾	21 ¾	9	9 ¾	14 ½	3/8	2 ¾	—	2 ½	1	47
XCBD-N4	12	20	5	16 ¼	24 ¼	10	15 ¾	14 ¾	½	3 ¼	—	2 ½	1	108
XCBE-N4	12	24	6	16 ¼	28 ¼	11	15 ¾	18 ¾	½	3 ⅝	2 ⅞	3	2	131
XCBF-N4	12	36	8	16 ¼	40 ¼	13 ½	15 ¾	29	5/8	4 ½	3 ⅝	4	2	237

ATEX Certification Available-Consult factory

NOTE All enclosures have 1/2" NPT top and bottom for breather drain.

MOTOR CONTROL

Explosionproof Circuit Breaker Enclosures

FEATURES

BREAKERS

- Circuit breakers are thermal magnetic type and are available in frame sizes ranging from 15 to 800 amperes.
- Also available as non-automatic circuit interrupters, without automatic overload trip elements for load switching and isolation.
- Short circuit and overload protection must be provided by separate protection device.
- Breakers available for magnetic trip only.
- Can be set up for GE, Cutler-Hammer (Westinghouse), Square-D and ITE (Siemens) brand circuit breakers. Consult factory for other brands.
- Holes for Cutler-Hammer circuit breakers are drilled directly into back wall.
- Breakers also available for magnetic trip only.

ENCLOSURES

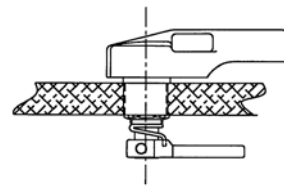
- Offer sufficient space for wire bending and ease of installation and maintenance.
- Housings are copper-free cast aluminum alloy, XCE series with precision ground cover and body joints.
- XCBC and larger units are furnished with hinges.
- Covers are removable for clear access to breakers.
- For XCBA and XCBB units, hinge and mounting pan are optional.
- Front mounted circuit breaker handle is padlockable in either "on" or "off" position.
- Furnished with Stainless Steel captive cover bolts.



Optional XCBH 2-2 handle shown; standard handle is XBO.



Standard XBO Style
 "New", spring loaded, compact adjustable design, ease of assembly and less expensive. Standard 3/4 - 14 NPSM opening required for installation.



Optional XCBH Style
 "Classic", larger handle. Special 1" - 11 1/2" NPSM opening required for installation.

Certifications

Class I, Groups B*,C,D	}	UL 1203
Class II, Groups E,F,G		
Class III	}	UL 50
TYPE 4 (w/N4 suffix)		
TYPE 4X (w/SS cover bolts)		

* Group C & D w/ N4 suffix



ATEX Certification Available as XCEX Series Enclosures. Consult factory

Explosionproof Circuit Breaker Enclosures

**CIRCUIT BREAKER ENCLOSURE ONLY**

Breaker Frame Size	Trip Range	Enclosure
100	15-70	XCBA-N4
100/150	80-150	XCBB-N4
225/250	70-250	XCBC-N4
400	100-225	XCBD-N4
600	250-400	XCBE-N4
800	400-800	XCBF-N4
1200	800-1200	XCBG-N4

FUSIBLE DISCONNECT SWITCHES

Description	Suffix	Available On Circuit Breaker	Available On Disconnect Switch	Universal Enclosure Only
Auxiliary Switch 1A and 1B Contacts	AS1	•	•	
Auxiliary Switch 2A and 2B Contacts	AS2	•	•	
Bell Alarm (Specify No. of Contacts)	BA	•		
Breather/Drain - installed in bottom	E	•	•	•
Breather and Drain installed	EE	•	•	•
High Interrupting Capacity Breaker	HI	•		
Epoxy Coating (External), (Specify Color)	LI	•	•	•
Epoxy Coating (Internal and External), (Specify Color)	L2	•	•	•
Substitute MCP for Breaker	M	•		
Phenolic Nameplate (Specify Legend)	NP	•	•	•
Shunt Trip (Specify Voltage Rating)	ST	•		
Undervoltage Release (Specify Voltage Rating)	UV	•		
Other / Special	Z	•	•	

DATA DIMENSIONS

Catalog #	Inside Nom. Dimensions			Overall Dimensions			Mounting Lug CL to CL		Mtg. Bolt Size	Conduit Dimension		Conduit # Holes Top/Bot		Ship Weight (lbs.)
	W	L	D	A	B	C	E	F		D	G	Size		
XCBA-N4	6	11	5	9 ¼	14 ¼	9	9 ⅝	7 ½	7/16	2 ½	—	1 ¼	1	28
XCBB-N4	6	13	5	9 ¼	16 ¼	9	9 ⅝	9 ½	3/8	2 ½	—	2	1	31
XCBC-N4	7	18	5	10 ¾	21 ¾	9	9 ¾	14 ½	3/8	2 ¾	—	2 ½	1	47
XCBD-N4	12	20	5	16 ¼	24 ¼	10	15 ¾	14 ¾	½	3 ¼	—	2 ½	1	108
XCBE-N4	12	24	6	16 ¼	28 ¼	11	15 ¾	18 ¾	½	3 ⅝	2 ⅞	3	2	131
XCBF-N4	12	36	8	16 ¼	40 ¼	13 ½	15 ¾	29	5/8	4 ½	3 ⅝	4	2	237

ATEX Certification Available-Consult factory

NOTE All enclosures have 1/2" NPT top and bottom for breather drain.

MOTOR CONTROL

Explosionproof Circuit Breaker Enclosures

FEATURES

BREAKERS

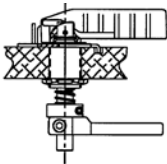
- Circuit breakers are thermal magnetic type and are available in frame sizes ranging from 15 to 800 amperes.
- Also available as non-automatic circuit interrupters, without automatic overload trip elements for load switching and isolation.
- Short circuit and overload protection must be provided by separate protection device.
- Breakers available for magnetic trip only.
- Can be set up for GE, Cutler-Hammer (Westinghouse), Square-D and ITE (Siemens) brand circuit breakers. Consult factory for other brands.
- Holes for Cutler-Hammer circuit breakers are drilled directly into back wall.
- Breakers also available for magnetic trip only.

ENCLOSURES

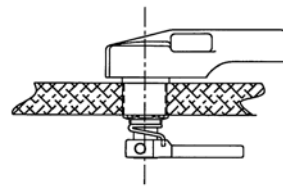
- Offer sufficient space for wire bending and ease of installation and maintenance.
- Housings are copper-free cast aluminum alloy, XCE series with precision ground cover and body joints.
- XCBC and larger units are furnished with hinges.
- Covers are removable for clear access to breakers.
- For XCBA and XCBB units, hinge and mounting pan are optional.
- Front mounted circuit breaker handle is padlockable in either "on" or "off" position.
- Furnished with Stainless Steel captive cover bolts.



Optional XCBH 2-2 handle shown; standard handle is XBO.



Standard XBO Style
 "New", spring loaded, compact adjustable design, ease of assembly and less expensive. Standard 3/4 - 14 NPSM opening required for installation.



Optional XCBH Style
 "Classic", larger handle. Special 1" - 11 1/2" NPSM opening required for installation.

Certifications

Class I, Groups B*,C,D	}	}	UL 1203
Class II, Groups E,F,G			CSA C22.2 No. 25 & 30
Class III			
TYPE 4 (w/N4 suffix)			UL 50
TYPE 4X (w/SS cover bolts)			

* Group C & D w/ N4 suffix



ATEX Certification Available as XCEX Series Enclosures. Consult factory