

Pass & Seymour LeGrand®

WPBJ-22 SWIMMING POOL JUNCTION BOX INSTALLATION INSTRUCTIONS

APPLICATION:

The WPBJ-22 Swimming Pool Junction Box is designed to be used for making connections to underwater swimming pool light fixtures and complies with the latest National Electrical Code and applicable UL Standards.

APPLICATION INFORMATION:

Type and Size of Flexible Cord

Type: Flexible cord used should be one of the following types: SO, ST or STO.

Size: 16/3 or 10/3 cord may be used depending on system voltage and lamp wattage.

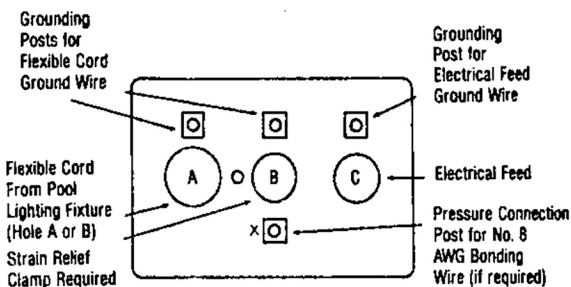


Figure 1. WPBJ-22 Base

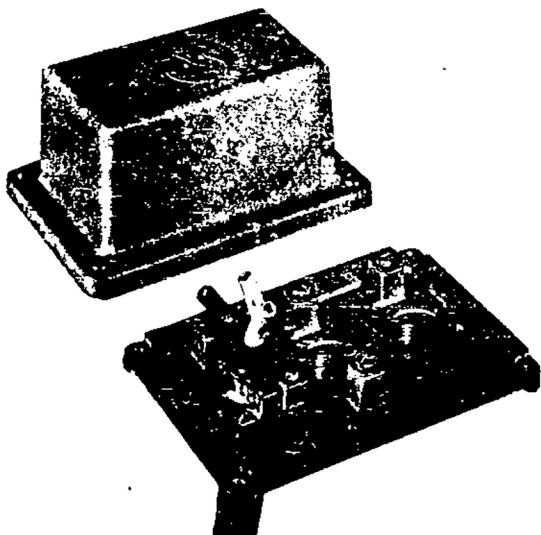


Figure 2. WPBJ-22 Swimming Pool Junction Box showing 10/3 flexible cord with strain relief clamp installed.

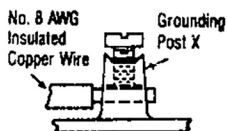
INSTALLATION PROCEDURES

1. Select the two conduit holes to be used in accordance with Table 1 below.
2. Pick the plug to fit the size of the hole (A or B) that will **not** be used, coat with pipe compound, install in hole and hand tighten.
3. Mount the junction box at the selected site (Hubs Down).
4. Remove the cover and run the electrical feed wiring and the flexible cord from the pool light through the conduits to the junction box. If non-metallic conduit has been used, a bonding wire must be run with the flexible cord inside the conduit from the forming shell of the pool light to the junction box. (Refer to note below.)
5. Tighten strain relief clamp on flexible cord and securely fasten clamp to base of junction box. If bonding wire is required, it should be routed outside of strain relief clamp.
6. Fasten ground wires from electrical feed and flexible cord to screw terminal grounding posts of junction box base. If a separate bonding wire is used, (see step 4) it must be connected to the pressure connection terminal X. (Refer to note below.)
7. Make other electrical connections - line and neutral.
8. Place cover and gasket on base and fasten securely with four (4) screws provided.

Table 1. WPBJ-22 Swimming Pool Junction Box Wiring Data

Hole	Size	Use	Wiring Data
A	1" NPT	Cord to Pool Light (strain relief required)	Metal Conduit - 10/3 or 16/3 cord to light. Non-Metallic Conduit - 10/3 or 16/3 cord to light. (See note below).
B	3/4" NPT	Cord to Pool Light (strain relief required)	Metal Conduit - 10/3 or 16/3 cord to light. Non-Metallic Conduit - 16/3 cord to light. (See note below).
C	3/4" NPT	Electrical feed into junction box	Metal Conduit - 10/3 or 16/3 wire. Non-Metallic Conduit - 10/3 or 16/3 wire.

NOTE: When non-metallic conduit is used between the junction box and the swimming pool light, a separate #8 AWG insulated copper bonding wire must be run inside the conduit and connected to the ground of the forming shell at the light. This wire is not held by the strain relief clamp and is routed around it. The junction box end of the wire must be connected to grounding post X (Figure 1) through the side hole pressure connector **ONLY**.



Pass & Seymour
legrand®

Pass & Seymour/Legrand P.O. Box 4822 Syracuse, NY 13221