

WP Extra-Duty Die-Cast Series

The extra-duty die-cast aluminum Series While-In-Use Covers are easy to install and shipped with a gasket, mounting screws, base and cover assembly, and inserts for a variety of applications.

Features

- Complies with 2014 Article 406.9(B)(1) for Wet Locations and Extra-Duty Applications
- Heavy-Duty die-cast Aluminum construction ensures long-lasting durability
- Single-Gang Models:
 - 3 inserts provided with all models that allow each model to meet multiple installations (up to 16 configurations)
- Double-Gang Models:
 - 6 inserts provided with all models that allow each model to meet multiple installations (up to 70 configurations)
 - 2 round inserts accommodate from 1.375" to 2.656" plugs for the 30/50 amp applications.
- Reinforced Hinge Pin - designed to exceed 40lb Hinge Hang/Stress Test
- Impact Rated: 12 lb impact test to ensure cover remains in-tact
- Lockable Hasp: All models accept up to 0.25" Dia Shank
- Meets requirements for cold impact testing: -60°F (-51°C)

Ratings

Cover: Die-Cast Aluminum
 UL Certified for Type 3R
 Outdoor Enclosures

Single-Gang :

- WP3110MXD – 2 cord outlets 0.6" high by 1.1" wide
- WP1010MXD – 2 cord outlets .6" high by 1.1" wide
- WP1010HMXD – 2 cord outlets 0.6" high by 2.1" wide
- WP1250MVXD – 2 cord outlets 0.6" high by 1.1" wide

Double-Gang :

- WP1030MXD – 2 cord outlets 0.6" high by 0.8" wide
- WP1250MXD – 2 cord outlets 0.6" high by 2.0" wide

Mounting Base: Die-Cast Aluminum

Inserts: UV stabilized polycarbonate

Gasket: Neoprene - 1/8" (4.8 mm) thick with slits for mounting screws

Max Cord Size: Single-Gang – (2) 14 Gauge or (2) 12 Gauge
 Double-Gang – (2) 14 Gauge or (2) 12 Gauge

Warranty: Limited 1 year

Project: _____

Location: _____

Product Type: _____

Contact/Phone: _____

Model #: _____



WP Extra-Duty Die-Cast Series



Model Number	Type	FlexiGuard Insert #	Depth (in)
WP3110MXD	Single-Gang	WP17	2 ¾
WP1010MXD	Single-Gang	WP17	3 ⅛
WP1010HMXD	Single-Gang/Horizontal	WP17	3 ⅛
WP1030MXD	Double-Gang	WP217	3 ⅛
WP1250MVXD	Single-Gange/Vertical	WP17	4 ⅝
WP1250MXD	Double-Gang	WP217	4 ⅝

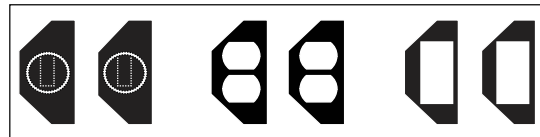
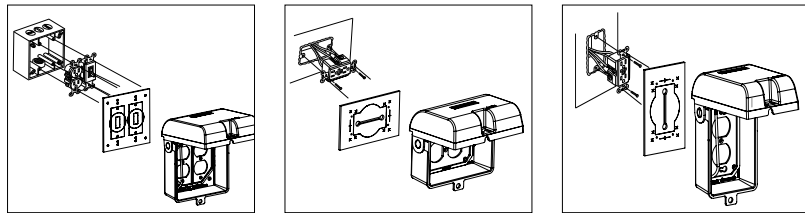
Specification for Single-Gang

The weatherproof cover shall be designed to mount on a single-gang _____, junction box to ensure while in use weather protection for a standard receptacle. The cover shall mount on indoor or outdoor junction boxes and shall include a weatherproof cover/base assembly, a gasket, three universal inserts, and mounting hardware. The outlet cover shall meet UL requirements for wet locations. The weatherproof cover shall be designed to meet requirements of with 2014 NEC Article 406.9(B)(1) for wet locations and extra-duty applications and shall be UL Type 3R listed. The weatherproof cover shall be constructed entirely of die cast aluminum. The cover, which encloses the cord set, shall be gray. The cover shall meet agency requirements for cold impact at -60°F (-51°C). The cover shall provide usable inside depth of _____ (2 ¾")(3 ⅛")(4 ⅝"). The weatherproof cover shall be Intermatic model _____ (See Model Numbers Listed).

Specification for Double-Gang

The weatherproof cover shall be designed to mount on a double-gang _____ (Vertical), junction box to ensure weather protection for a standard receptacle. The cover shall mount on indoor or outdoor junction boxes and shall include a weatherproof cover/base assembly, a gasket, six universal inserts, and mounting hardware. The inserts must provide flexibility for mounting at any angle including: 90°, 180°, or 270°. The outlet cover shall meet UL requirements for wet locations. The weatherproof cover shall be designed to meet requirements of 2014 NEC Article 406.8(B)(1) for wet locations and extra-duty applications and shall be UL Type 3R listed. The weatherproof cover and base shall be constructed entirely of die cast aluminum. The cover, which encloses the cord set, shall be gray. The cover shall meet agency requirements for cold impact at -60°F (-51°C). The cover shall provide a usable inside depth of _____ (3 ⅛")(4 ⅝"). The weatherproof cover shall be Intermatic model _____ (See Model Numbers Listed).

Diagrams



WP217



WP17

WP Extra-Duty Die-Cast Series

The extra-duty die-cast aluminum Series While-In-Use Covers are easy to install and shipped with a gasket, mounting screws, base and cover assembly, and inserts for a variety of applications.

Features

- Complies with 2014 Article 406.9(B)(1) for Wet Locations and Extra-Duty Applications
- Heavy-Duty die-cast Aluminum construction ensures long-lasting durability
- Single-Gang Models:
 - 3 inserts provided with all models that allow each model to meet multiple installations (up to 16 configurations)
- Double-Gang Models:
 - 6 inserts provided with all models that allow each model to meet multiple installations (up to 70 configurations)
 - 2 round inserts accommodate from 1.375" to 2.656" plugs for the 30/50 amp applications.
- Reinforced Hinge Pin - designed to exceed 40lb Hinge Hang/Stress Test
- Impact Rated: 12 lb impact test to ensure cover remains in-tact
- Lockable Hasp: All models accept up to 0.25" Dia Shank
- Meets requirements for cold impact testing: -60°F (-51°C)

Ratings

Cover: Die-Cast Aluminum
 UL Certified for Type 3R
 Outdoor Enclosures

Single-Gang :

- WP3110MXD – 2 cord outlets 0.6" high by 1.1" wide
- WP1010MXD – 2 cord outlets .6" high by 1.1" wide
- WP1010HMXD – 2 cord outlets 0.6" high by 2.1" wide
- WP1250MVXD – 2 cord outlets 0.6" high by 1.1" wide

Double-Gang :

- WP1030MXD – 2 cord outlets 0.6" high by 0.8" wide
- WP1250MXD – 2 cord outlets 0.6" high by 2.0" wide

Mounting Base: Die-Cast Aluminum

Inserts: UV stabilized polycarbonate

Gasket: Neoprene - 1/8" (4.8 mm) thick with slits for mounting screws

Max Cord Size: Single-Gang – (2) 14 Gauge or (2) 12 Gauge
 Double-Gang – (2) 14 Gauge or (2) 12 Gauge

Warranty: Limited 1 year

Project: _____

Location: _____

Product Type: _____

Contact/Phone: _____

Model #: _____



WP Extra-Duty Die-Cast Series



Model Number	Type	FlexiGuard Insert #	Depth (in)
WP3110MXD	Single-Gang	WP17	2 ¾
WP1010MXD	Single-Gang	WP17	3 ⅛
WP1010HMXD	Single-Gang/Horizontal	WP17	3 ⅛
WP1030MXD	Double-Gang	WP217	3 ⅛
WP1250MVXD	Single-Gange/Vertical	WP17	4 ⅝
WP1250MXD	Double-Gang	WP217	4 ⅝

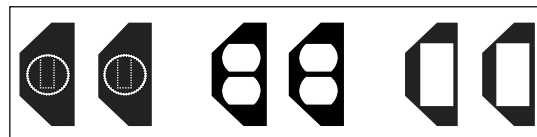
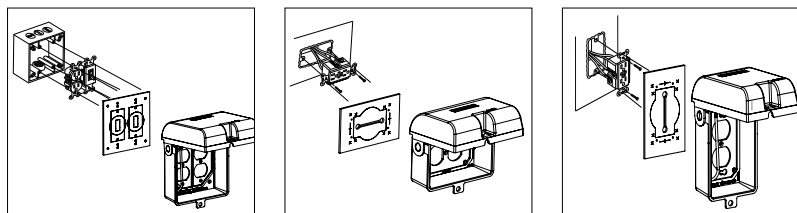
Specification for Single-Gang

The weatherproof cover shall be designed to mount on a single-gang _____, junction box to ensure while in use weather protection for a standard receptacle. The cover shall mount on indoor or outdoor junction boxes and shall include a weatherproof cover/base assembly, a gasket, three universal inserts, and mounting hardware. The outlet cover shall meet UL requirements for wet locations. The weatherproof cover shall be designed to meet requirements of with 2014 NEC Article 406.9(B)(1) for wet locations and extra-duty applications and shall be UL Type 3R listed. The weatherproof cover shall be constructed entirely of die cast aluminum. The cover, which encloses the cord set, shall be gray. The cover shall meet agency requirements for cold impact at -60°F (-51°C). The cover shall provide usable inside depth of _____ (2 ¾")(3 ⅛")(4 ⅝"). The weatherproof cover shall be Intermatic model _____ (See Model Numbers Listed).

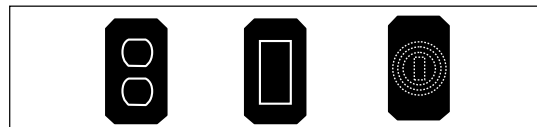
Specification for Double-Gang

The weatherproof cover shall be designed to mount on a double-gang _____ (Vertical), junction box to ensure weather protection for a standard receptacle. The cover shall mount on indoor or outdoor junction boxes and shall include a weatherproof cover/base assembly, a gasket, six universal inserts, and mounting hardware. The inserts must provide flexibility for mounting at any angle including: 90°, 180°, or 270°. The outlet cover shall meet UL requirements for wet locations. The weatherproof cover shall be designed to meet requirements of 2014 NEC Article 406.8(B)(1) for wet locations and extra-duty applications and shall be UL Type 3R listed. The weatherproof cover and base shall be constructed entirely of die cast aluminum. The cover, which encloses the cord set, shall be gray. The cover shall meet agency requirements for cold impact at -60°F (-51°C). The cover shall provide a usable inside depth of _____ (3 ⅛")(4 ⅝"). The weatherproof cover shall be Intermatic model _____ (See Model Numbers Listed).

Diagrams



WP217



WP17