

WGH LED SERIES

GLASS WALLPACK

tradeSELECT®

FEATURES

- Perimeter lighting for safety and security. Use on factories, warehouses, self-storage, commercial buildings, etc
- LED units replace up to 400W HID
- Borosilicate glass refractor softens lamp image and provides uniform distribution - four times spacing to mount height
- Cast aluminum frame holds lens, hinges to side on housing and seals with two stainless steel screws
- Cast aluminum housing with 1/2" conduit entries, button photocontrol can be field installed
- DLC (DesignLights Consortium Qualified) - see www.designlights.org



RELATED PRODUCTS

- ∅ [Perimaliter® PGM3/PGL](#)
- ∅ [NRG® 300L Series](#)
- ∅ [LNC2 Litepak](#)

SPECIFICATIONS

HOUSING

- Borosilicate glass refractor softens lamp image and provides uniform distribution
- Cast aluminum frame holds lens and seals to housing gasket with two stainless steel screws.
- Door assembly hinges to side on mid-size units; hinges down on small and large units
- Cast aluminum housing with three 1/2" conduit entries (on top and sides), for button photocontrol or surface conduit
- All units have dark bronze matte textured powder paint finish
- Operating temperature: -30°C to +40°C

OPTICS

- Mid power LEDs offer lower glare, better uniformity, higher efficacies (up to 120 lumens per watt (LPW)) and lower thermals for longer lasting electronic components

LED DRIVER

- Driver RoHS and IP66
- Single, 120V–277V or 347V/480V (225L only), 50/60Hz driver
- 10kA surge protection (parallel); Automatically takes fixture off-line when device is consumed

CERTIFICATIONS

- Some models meet DesignLights
- Consortium (DLC) standard & premium qualifications, consult DLC website for more details: <http://www.designlights.org/QPL>
- Listed to UL1598 for use in wet locations

WARRANTY

- See [HLI Standard Warranty](#) for additional information

ORDERING GUIDE

| Housing Size | Catalog Number | Wattage | Number of LEDs | Voltage | Dist. Type | Delivered Lumens | LPW | CCT | Weight lbs. (kg) |
|--------------|-----------------|---------|----------------|----------|------------|------------------|-----|-------|------------------|
| Small | WGH-30-4K-U-S | 28W | 108 | 120-277V | 4 | 3259 | 119 | 4000K | 6.75 (3) |
| Small | WGH-30-5K-U-S | 28W | 108 | 120-277V | 4 | 3326 | 121 | 5000K | 6.75 (3) |
| Small | WGH-40-4K-U-S | 40W | 108 | 120-277V | 4 | 4394 | 110 | 4000K | 6.75 (3) |
| Small | WGH-40-5K-U-S | 40W | 108 | 120-277V | 4 | 4484 | 113 | 5000K | 6.75 (3) |
| Medium | WGH-110L-4K-U-M | 54W | 110 | 120-277V | 4 | 6170 | 113 | 4000K | 11 (5.0) |
| Medium | WGH-110L-5K-U-M | 54W | 110 | 120-277V | 4 | 6372 | 118 | 5000K | 11 (5.0) |
| Medium | WGH-133L-4K-U-M | 76W | 133 | 120-277V | 4 | 8989 | 118 | 4000K | 11 (5.0) |
| Medium | WGH-133L-5K-U-M | 76W | 133 | 120-277V | 4 | 9173 | 120 | 5000K | 11 (5.0) |
| Large | WGH-225L-4K-U-L | 102W | 225 | 120-277V | 4 | 11,838 | 116 | 4000K | 19 (8.6) |
| Large | WGH-225L-5K-U-L | 102W | 225 | 120-277V | 4 | 12,134 | 119 | 5000K | 19 (8.6) |
| Large | WGH-225L-4K-C-L | 110W | 225 | 347/480V | 4 | 12,818 | 117 | 4000K | 19 (8.6) |

| KEY DATA | |
|--------------------------------|-----------------|
| Lumen Range | 3,259–12,818 |
| Wattage Range | 28–110 |
| Efficacy Range (LPW) | 110–121 |
| Fixture Projected Life (Hours) | L70>50K |
| Weight lbs. (kg) | 6.75–19 (3–8.5) |

WGH LED

GLASS WALLPACK

ORDERING GUIDE

Accessories

| | |
|---------------------|--|
| PBT-1 | Photocontrol, 120V |
| PBT-234 | Photocontrol, 208, 240, 277V |
| SM708-GUARD | Wire Guard for L size |
| WGH-LED-RL-M | LED replacement lens assembly for M size |
| WGH-LED-RL-L | LED replacement lens assembly for L size |

PERFORMANCE DATA

| Description | SYSTEM WATTS | Distribution Type | 5K (5000K NOMINAL 80 CRI) | | | | | 4K (4000K NOMINAL 80 CRI) | | | | |
|-------------|--------------|-------------------|---------------------------|-----|---|---|---|---------------------------|-----|---|---|---|
| | | | Lumens | LPW | B | U | G | Lumens | LPW | B | U | G |
| WGH-30 | 28W | 4 | 3326 | 121 | 1 | 3 | 3 | 3339 | 116 | 1 | 3 | 3 |
| WGH-40 | 40W | 4 | 4484 | 113 | 1 | 3 | 3 | 3339 | 116 | 1 | 3 | 3 |
| WGH-110L | 54W | 4 | 6372 | 118 | 1 | 4 | 4 | 6170 | 113 | 1 | 4 | 4 |
| WGH-133L | 76W | 4 | 8989 | 118 | 1 | 5 | 5 | 9173 | 120 | 1 | 5 | 5 |
| WGH-225L | 102W | 4 | 12,123 | 119 | 2 | 5 | 5 | 11,838 | 116 | 2 | 5 | 5 |
| WGH-225L* | 110W | 4 | | | | | | 12,818 | 117 | 2 | 5 | 5 |

*347 and 480 VAC input Lumen values are from photometric test performed in accordance with IESNA LM-79-08. Data is considered to be representative of the configurations shown. Actual performance may differ as a result of end-user environment application and inherent performance balances of the electrical components.

PROJECTED LUMEN MAINTENANCE

| Ambient Temperature | OPERATING HOURS | | | | | |
|---------------------|-----------------|--------|--------|-------------------------|---------|----------------|
| | 0 | 25,000 | 50,000 | TM-21-11' L96 60,000 | 100,000 | L70 (Hours) |
| 25°C / 77°F | 1.00 | 0.96 | 0.93 | 0.92 | 0.88 | >280,000 |
| 40°C / 104°F | 0.99 | 0.95 | 0.91 | 0.90 | 0.84 | >206,000 |

1. Projected per IESNA TM-21-11 * (Niche NFSL757DT-VT, 150mA, 85°C Ts, 10,000hrs) Data references the extrapolated performance projections for the base model in a 40°C ambient, based on 10,000 hours of LED testing per IESNA LM-80-08

WGH LED

GLASS WALLPACK

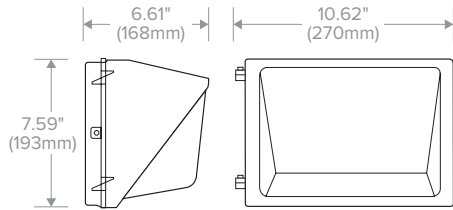
LUMINAIRE AMBIENT TEMPERATURE FACTOR (LATF)

| Ambient Temperature | | Lumen Multiplier |
|---------------------|-------|------------------|
| 0°C | 32°F | 1.02 |
| 10°C | 50°F | 1.02 |
| 20°C | 68°F | 1.01 |
| 25°C | 77°F | 1.00 |
| 30°C | 86°F | 0.99 |
| 40°C | 104°F | 0.98 |
| 50°C | 122°F | 0.97 |

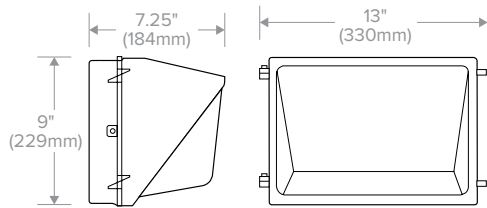
Use these factors to determine relative lumen output for average ambient temperatures from 0-40°C (32-104°F).

DIMENSIONS

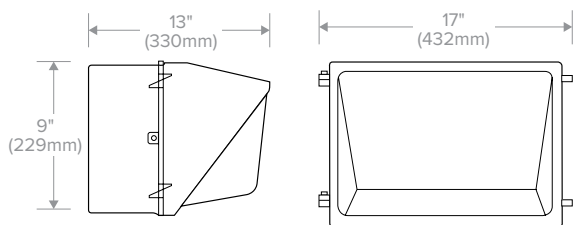
SMALL



MEDIUM



LARGE



WGH LED

GLASS WALLPACK

PHOTOMETRY

WGH-30-4K-U-S

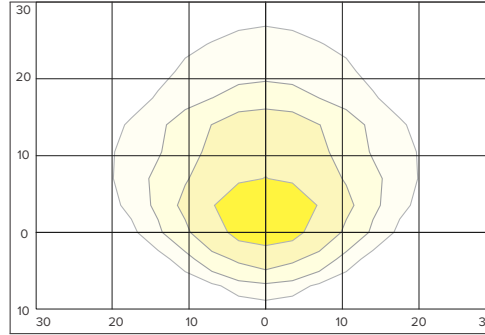
LUMINAIRE DATA

| | |
|-------------------|---------------------|
| Description | 4000 Kelvin, 70 CRI |
| Distribution Type | IV |
| Delivered Lumens | 3326 |
| Watts | 27.4 |
| Efficacy | 121.4 |
| Mounting | Wall |

ZONAL LUMEN SUMMARY

| Zone | Lumens | % Luminaire |
|----------------------|--------|-------------|
| Downward Street Side | 2559 | 76.9% |
| Downward House Side | 448 | 13.5% |
| Downward Total | 3007 | 90.4% |
| Upward Street Side | 313 | 9.4% |
| Upward House Side | 6 | 0.2% |
| Upward Total | 319 | 9.6% |
| Total Flux | 3326 | 100.0% |

ISOMETRIC FOOTCANDLE



10' Mounting Height

- 5.0 FC
- 2.0 FC
- 1.0 FC
- 0.5 FC

WGH-40-4K-U-S

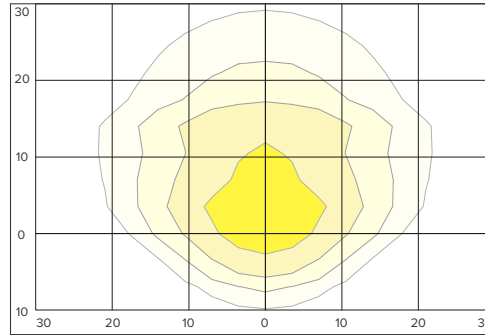
LUMINAIRE DATA

| | |
|-------------------|--------------------|
| Description | 4000 Kelvin 70 CRI |
| Distribution Type | IV |
| Delivered Lumens | 4484 |
| Watts | 39 |
| Efficacy | 112.9 |
| Mounting | Wall |

ZONAL LUMEN SUMMARY

| Zone | Lumens | % Luminaire |
|----------------------|--------|-------------|
| Downward Street Side | 3425 | 76.4% |
| Downward House Side | 604 | 13.5% |
| Downward Total | 4029 | 90.0% |
| Upward Street Side | 444 | 9.9% |
| Upward House Side | 11 | 2.0% |
| Upward Total | 455 | 10.1% |
| Upward House Side | 4484 | 100.0% |

ISOMETRIC FOOTCANDLE



10' Mounting Height

- 5.0 FC
- 2.0 FC
- 1.0 FC
- 0.5 FC

WGH-110-4K-U-M

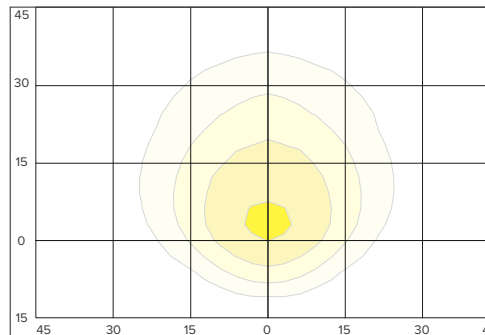
LUMINAIRE DATA

| | |
|-------------------|--------------------|
| Description | 4000 Kelvin 70 CRI |
| Distribution Type | IV |
| Delivered Lumens | 6271 |
| Watts | 52.7 |
| Efficacy | 119 |
| Mounting | Wall |

ZONAL LUMEN SUMMARY

| Zone | Lumens | % Luminaire |
|----------------------|--------|-------------|
| Downward Street Side | 4140.8 | 66.0% |
| Downward House Side | 728.4 | 11.6% |
| Downward Total | 4869.2 | 77.6% |
| Upward Street Side | 1349 | 21.5% |
| Upward House Side | 53.1 | 0.8% |
| Upward Total | 1402 | 22.4% |
| Total Flux | 6271 | 100.0% |

ISOMETRIC FOOTCANDLE



15' Mounting Height

- 5.0 FC
- 2.0 FC
- 1.0 FC
- 0.5 FC

WGH LED

GLASS WALLPACK

PHOTOMETRY

WGH-133-4K-U-M

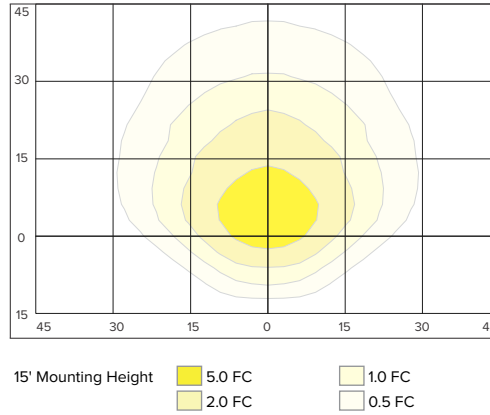
LUMINAIRE DATA

| | |
|-------------------|--------------------|
| Description | 4000 Kelvin 70 CRI |
| Distribution Type | IV |
| Delivered Lumens | 8795 |
| Watts | 74.3 |
| Efficacy | 117.7 |
| Mounting | Wall |

ZONAL LUMEN SUMMARY

| Zone | Lumens | % Luminaire |
|----------------------|--------|-------------|
| Downward Street Side | 6161 | 70.0% |
| Downward House Side | 971 | 11.0% |
| Downward Total | 7131 | 81.1% |
| Upward Street Side | 1616 | 18.4% |
| Upward House Side | 48 | 0.5% |
| Upward Total | 1663 | 18.9% |
| Total Flux | 8795 | 100.0% |

ISOMETRIC FOOTCANDLE



WGH-225L-4K-U-L

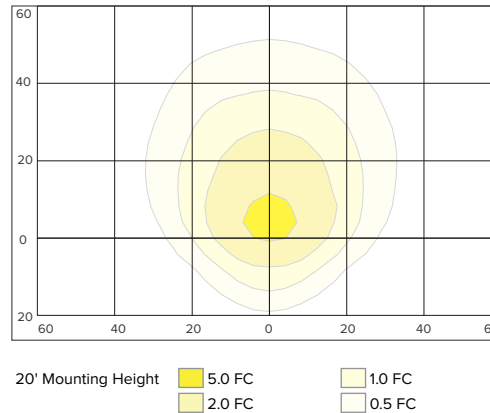
LUMINAIRE DATA

| | |
|-------------------|--------------------|
| Description | 4000 Kelvin 70 CRI |
| Distribution Type | IV |
| Delivered Lumens | 11507 |
| Watts | 92 |
| Efficacy | 125 |
| Mounting | Wall |

ZONAL LUMEN SUMMARY

| Zone | Lumens | % Luminaire |
|----------------------|---------|-------------|
| Downward Street Side | 7519.1 | 65.3% |
| Downward House Side | 1444.5 | 12.6% |
| Downward Total | 8963.6 | 77.9% |
| Upward Street Side | 2457.7 | 21.4% |
| Upward House Side | 85.6 | 0.7% |
| Upward Total | 2543 | 22.1% |
| Total Flux | 11506.9 | 100% |

ISOMETRIC FOOTCANDLE



SHIPPING INFORMATION

| Catalog Number | G.W(kg)/CTN | CARTON DIMENSIONS | | |
|----------------|-------------|-------------------|-----------------|------------------|
| | | Length Inch (cm) | Width Inch (cm) | Height Inch (cm) |
| WGH-30/40 | 6.75 (3.0) | 11.6 (29.5) | 9.6 (24.5) | 8.8 (22.5) |
| WGH-110L/133L | 11.0 (4.8) | 15.0 (38) | 9.1 (19) | 11.8 (24) |
| WGH-225L | 19.0 (8.6) | 21.2 (54) | 12.0 (28) | 14.7 (24) |

WGH LED SERIES

GLASS WALLPACK

tradeSELECT®

FEATURES

- Perimeter lighting for safety and security. Use on factories, warehouses, self-storage, commercial buildings, etc
- LED units replace up to 400W HID
- Borosilicate glass refractor softens lamp image and provides uniform distribution - four times spacing to mount height
- Cast aluminum frame holds lens, hinges to side on housing and seals with two stainless steel screws
- Cast aluminum housing with 1/2" conduit entries, button photocontrol can be field installed
- DLC (DesignLights Consortium Qualified) - see www.designlights.org



RELATED PRODUCTS

- ∅ [Perimaliter® PGM3/PGL](#)
- ∅ [NRG® 300L Series](#)
- ∅ [LNC2 Litepak](#)

SPECIFICATIONS

HOUSING

- Borosilicate glass refractor softens lamp image and provides uniform distribution
- Cast aluminum frame holds lens and seals to housing gasket with two stainless steel screws.
- Door assembly hinges to side on mid-size units; hinges down on small and large units
- Cast aluminum housing with three 1/2" conduit entries (on top and sides), for button photocontrol or surface conduit
- All units have dark bronze matte textured powder paint finish
- Operating temperature: -30°C to +40°C

OPTICS

- Mid power LEDs offer lower glare, better uniformity, higher efficacies (up to 120 lumens per watt (LPW)) and lower thermals for longer lasting electronic components

LED DRIVER

- Driver RoHS and IP66
- Single, 120V–277V or 347V/480V (225L only), 50/60Hz driver
- 10kA surge protection (parallel); Automatically takes fixture off-line when device is consumed

CERTIFICATIONS

- Some models meet DesignLights
- Consortium (DLC) standard & premium qualifications, consult DLC website for more details: <http://www.designlights.org/QPL>
- Listed to UL1598 for use in wet locations

WARRANTY

- See [HLI Standard Warranty](#) for additional information

ORDERING GUIDE

| Housing Size | Catalog Number | Wattage | Number of LEDs | Voltage | Dist. Type | Delivered Lumens | LPW | CCT | Weight lbs. (kg) |
|--------------|-----------------|---------|----------------|----------|------------|------------------|-----|-------|------------------|
| Small | WGH-30-4K-U-S | 28W | 108 | 120-277V | 4 | 3259 | 119 | 4000K | 6.75 (3) |
| Small | WGH-30-5K-U-S | 28W | 108 | 120-277V | 4 | 3326 | 121 | 5000K | 6.75 (3) |
| Small | WGH-40-4K-U-S | 40W | 108 | 120-277V | 4 | 4394 | 110 | 4000K | 6.75 (3) |
| Small | WGH-40-5K-U-S | 40W | 108 | 120-277V | 4 | 4484 | 113 | 5000K | 6.75 (3) |
| Medium | WGH-110L-4K-U-M | 54W | 110 | 120-277V | 4 | 6170 | 113 | 4000K | 11 (5.0) |
| Medium | WGH-110L-5K-U-M | 54W | 110 | 120-277V | 4 | 6372 | 118 | 5000K | 11 (5.0) |
| Medium | WGH-133L-4K-U-M | 76W | 133 | 120-277V | 4 | 8989 | 118 | 4000K | 11 (5.0) |
| Medium | WGH-133L-5K-U-M | 76W | 133 | 120-277V | 4 | 9173 | 120 | 5000K | 11 (5.0) |
| Large | WGH-225L-4K-U-L | 102W | 225 | 120-277V | 4 | 11,838 | 116 | 4000K | 19 (8.6) |
| Large | WGH-225L-5K-U-L | 102W | 225 | 120-277V | 4 | 12,134 | 119 | 5000K | 19 (8.6) |
| Large | WGH-225L-4K-C-L | 110W | 225 | 347/480V | 4 | 12,818 | 117 | 4000K | 19 (8.6) |

| KEY DATA | |
|--------------------------------|-----------------|
| Lumen Range | 3,259–12,818 |
| Wattage Range | 28–110 |
| Efficacy Range (LPW) | 110–121 |
| Fixture Projected Life (Hours) | L70>50K |
| Weight lbs. (kg) | 6.75–19 (3–8.5) |

WGH LED

GLASS WALLPACK

ORDERING GUIDE

Accessories

| | |
|---------------------|--|
| PBT-1 | Photocontrol, 120V |
| PBT-234 | Photocontrol, 208, 240, 277V |
| SM708-GUARD | Wire Guard for L size |
| WGH-LED-RL-M | LED replacement lens assembly for M size |
| WGH-LED-RL-L | LED replacement lens assembly for L size |

PERFORMANCE DATA

| Description | SYSTEM WATTS | Distribution Type | 5K (5000K NOMINAL 80 CRI) | | | | | 4K (4000K NOMINAL 80 CRI) | | | | |
|-------------|--------------|-------------------|---------------------------|-----|---|---|---|---------------------------|-----|---|---|---|
| | | | Lumens | LPW | B | U | G | Lumens | LPW | B | U | G |
| WGH-30 | 28W | 4 | 3326 | 121 | 1 | 3 | 3 | 3339 | 116 | 1 | 3 | 3 |
| WGH-40 | 40W | 4 | 4484 | 113 | 1 | 3 | 3 | 3339 | 116 | 1 | 3 | 3 |
| WGH-110L | 54W | 4 | 6372 | 118 | 1 | 4 | 4 | 6170 | 113 | 1 | 4 | 4 |
| WGH-133L | 76W | 4 | 8989 | 118 | 1 | 5 | 5 | 9173 | 120 | 1 | 5 | 5 |
| WGH-225L | 102W | 4 | 12,123 | 119 | 2 | 5 | 5 | 11,838 | 116 | 2 | 5 | 5 |
| WGH-225L* | 110W | 4 | | | | | | 12,818 | 117 | 2 | 5 | 5 |

*347 and 480 VAC input Lumen values are from photometric test performed in accordance with IESNA LM-79-08. Data is considered to be representative of the configurations shown. Actual performance may differ as a result of end-user environment application and inherent performance balances of the electrical components.

PROJECTED LUMEN MAINTENANCE

| Ambient Temperature | OPERATING HOURS | | | | | |
|---------------------|-----------------|--------|--------|-------------------------|---------|----------------|
| | 0 | 25,000 | 50,000 | TM-21-11' L96 60,000 | 100,000 | L70 (Hours) |
| 25°C / 77°F | 1.00 | 0.96 | 0.93 | 0.92 | 0.88 | >280,000 |
| 40°C / 104°F | 0.99 | 0.95 | 0.91 | 0.90 | 0.84 | >206,000 |

1. Projected per IESNA TM-21-11 * (Niche NFSL757DT-VT, 150mA, 85°C Ts, 10,000hrs) Data references the extrapolated performance projections for the base model in a 40°C ambient, based on 10,000 hours of LED testing per IESNA LM-80-08

WGH LED

GLASS WALLPACK

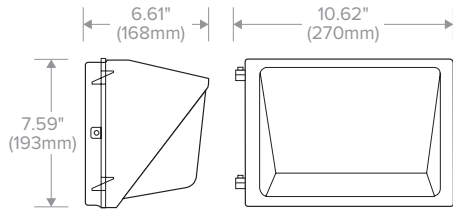
LUMINAIRE AMBIENT TEMPERATURE FACTOR (LATF)

| Ambient Temperature | | Lumen Multiplier |
|---------------------|-------|------------------|
| 0°C | 32°F | 1.02 |
| 10°C | 50°F | 1.02 |
| 20°C | 68°F | 1.01 |
| 25°C | 77°F | 1.00 |
| 30°C | 86°F | 0.99 |
| 40°C | 104°F | 0.98 |
| 50°C | 122°F | 0.97 |

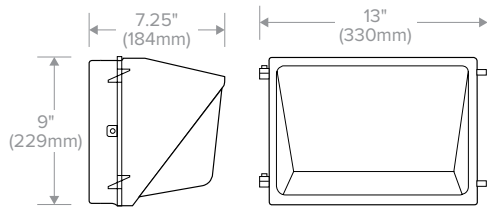
Use these factors to determine relative lumen output for average ambient temperatures from 0-40°C (32-104°F).

DIMENSIONS

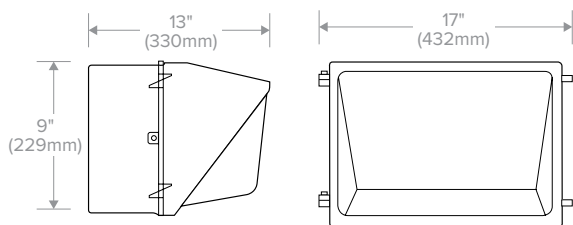
SMALL



MEDIUM



LARGE



WGH LED

GLASS WALLPACK

PHOTOMETRY

WGH-30-4K-U-S

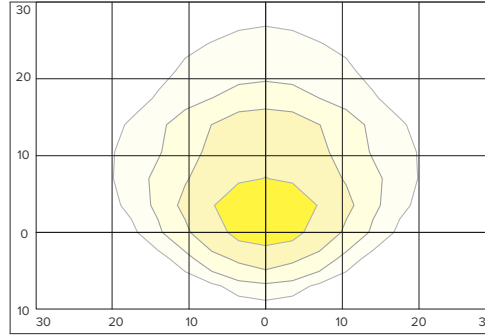
LUMINAIRE DATA

| | |
|-------------------|---------------------|
| Description | 4000 Kelvin, 70 CRI |
| Distribution Type | IV |
| Delivered Lumens | 3326 |
| Watts | 27.4 |
| Efficacy | 121.4 |
| Mounting | Wall |

ZONAL LUMEN SUMMARY

| Zone | Lumens | % Luminaire |
|----------------------|--------|-------------|
| Downward Street Side | 2559 | 76.9% |
| Downward House Side | 448 | 13.5% |
| Downward Total | 3007 | 90.4% |
| Upward Street Side | 313 | 9.4% |
| Upward House Side | 6 | 0.2% |
| Upward Total | 319 | 9.6% |
| Total Flux | 3326 | 100.0% |

ISOMETRIC FOOTCANDLE



10' Mounting Height

- 5.0 FC
- 2.0 FC
- 1.0 FC
- 0.5 FC

WGH-40-4K-U-S

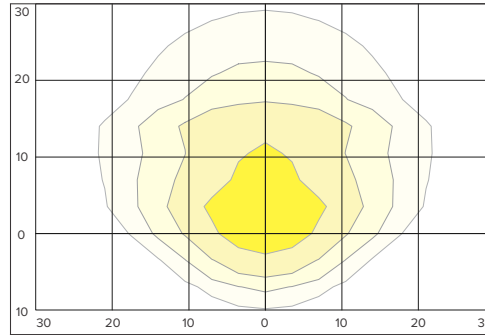
LUMINAIRE DATA

| | |
|-------------------|--------------------|
| Description | 4000 Kelvin 70 CRI |
| Distribution Type | IV |
| Delivered Lumens | 4484 |
| Watts | 39 |
| Efficacy | 112.9 |
| Mounting | Wall |

ZONAL LUMEN SUMMARY

| Zone | Lumens | % Luminaire |
|----------------------|--------|-------------|
| Downward Street Side | 3425 | 76.4% |
| Downward House Side | 604 | 13.5% |
| Downward Total | 4029 | 90.0% |
| Upward Street Side | 444 | 9.9% |
| Upward House Side | 11 | 2.0% |
| Upward Total | 455 | 10.1% |
| Upward House Side | 4484 | 100.0% |

ISOMETRIC FOOTCANDLE



10' Mounting Height

- 5.0 FC
- 2.0 FC
- 1.0 FC
- 0.5 FC

WGH-110-4K-U-M

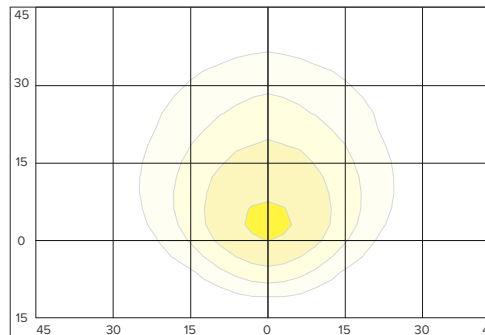
LUMINAIRE DATA

| | |
|-------------------|--------------------|
| Description | 4000 Kelvin 70 CRI |
| Distribution Type | IV |
| Delivered Lumens | 6271 |
| Watts | 52.7 |
| Efficacy | 119 |
| Mounting | Wall |

ZONAL LUMEN SUMMARY

| Zone | Lumens | % Luminaire |
|----------------------|--------|-------------|
| Downward Street Side | 4140.8 | 66.0% |
| Downward House Side | 728.4 | 11.6% |
| Downward Total | 4869.2 | 77.6% |
| Upward Street Side | 1349 | 21.5% |
| Upward House Side | 53.1 | 0.8% |
| Upward Total | 1402 | 22.4% |
| Total Flux | 6271 | 100.0% |

ISOMETRIC FOOTCANDLE



15' Mounting Height

- 5.0 FC
- 2.0 FC
- 1.0 FC
- 0.5 FC

WGH LED

GLASS WALLPACK

PHOTOMETRY

WGH-133-4K-U-M

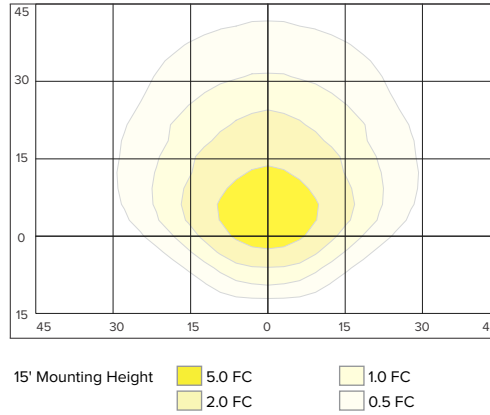
LUMINAIRE DATA

| | |
|-------------------|--------------------|
| Description | 4000 Kelvin 70 CRI |
| Distribution Type | IV |
| Delivered Lumens | 8795 |
| Watts | 74.3 |
| Efficacy | 117.7 |
| Mounting | Wall |

ZONAL LUMEN SUMMARY

| Zone | Lumens | % Luminaire |
|----------------------|--------|-------------|
| Downward Street Side | 6161 | 70.0% |
| Downward House Side | 971 | 11.0% |
| Downward Total | 7131 | 81.1% |
| Upward Street Side | 1616 | 18.4% |
| Upward House Side | 48 | 0.5% |
| Upward Total | 1663 | 18.9% |
| Total Flux | 8795 | 100.0% |

ISOMETRIC FOOTCANDLE



WGH-225L-4K-U-L

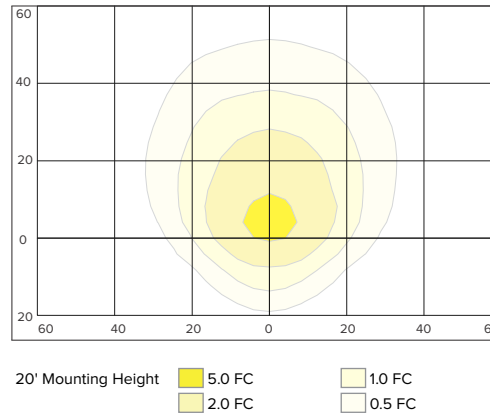
LUMINAIRE DATA

| | |
|-------------------|--------------------|
| Description | 4000 Kelvin 70 CRI |
| Distribution Type | IV |
| Delivered Lumens | 11507 |
| Watts | 92 |
| Efficacy | 125 |
| Mounting | Wall |

ZONAL LUMEN SUMMARY

| Zone | Lumens | % Luminaire |
|----------------------|---------|-------------|
| Downward Street Side | 7519.1 | 65.3% |
| Downward House Side | 1444.5 | 12.6% |
| Downward Total | 8963.6 | 77.9% |
| Upward Street Side | 2457.7 | 21.4% |
| Upward House Side | 85.6 | 0.7% |
| Upward Total | 2543 | 22.1% |
| Total Flux | 11506.9 | 100% |

ISOMETRIC FOOTCANDLE



SHIPPING INFORMATION

| Catalog Number | G.W(kg)/CTN | CARTON DIMENSIONS | | |
|----------------|-------------|-------------------|-----------------|------------------|
| | | Length Inch (cm) | Width Inch (cm) | Height Inch (cm) |
| WGH-30/40 | 6.75 (3.0) | 11.6 (29.5) | 9.6 (24.5) | 8.8 (22.5) |
| WGH-110L/133L | 11.0 (4.8) | 15.0 (38) | 9.1 (19) | 11.8 (24) |
| WGH-225L | 19.0 (8.6) | 21.2 (54) | 12.0 (28) | 14.7 (24) |