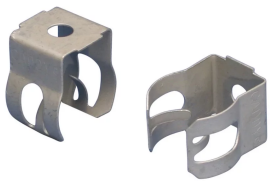




WALL MOUNT CONDUIT CLIP, 1/2", 3/4" EMT, 1/4" HOLE

CATALOG NUMBER

WC812



FEATURES

Quickly attaches pipe, conduit, MC/ AC and tube to wall surfaces

Push-in installation of conduit

Eliminates need for offset bending conduit

Low-profile design minimizes snag potential

Secure with powder-actuated tools, self-tapping concrete anchors or screw guns

PRODUCT ATTRIBUTES

Material: Spring Steel

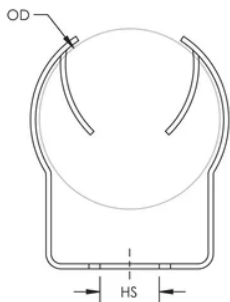
Finish: nVent CADDY Armour

EMT Conduit Size: 1/2";3/4"

Outer Diameter (OD): 0.710" - 1.18"

Hole Size (HS): 1/4"

DIAGRAMS



WARNING

nVent products shall be installed and used only as indicated in nVent's product instruction sheets and training materials. Instruction sheets are available at www.nvent.com and from your nVent customer service representative. Improper installation, misuse, misapplication or other failure to completely follow nVent's instructions and warnings may cause product malfunction, property damage, serious bodily injury and death and/or void your warranty.

North America

+1.800.753.9221

Option 1 – Customer Care

Option 2 – Technical Support

Europe

Netherlands:

+31 800-0200135

France:

+33 800 901 793

Europe

Germany:

800 1890272

Other Countries:

+31 13 5835404

APAC

Shanghai:

+ 86 21 2412 1618/19

Sydney:

+61 2 9751 8500



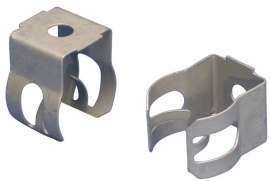
Our powerful portfolio of brands:
nVent.com CADDY ERICO HOFFMAN RAYCHEM SCHROFF
TRACER



WALL MOUNT CONDUIT CLIP, 1/2", 3/4" EMT, 1/4" HOLE

CATALOG NUMBER

WC812



FEATURES

Quickly attaches pipe, conduit, MC/ AC and tube to wall surfaces

Push-in installation of conduit

Eliminates need for offset bending conduit

Low-profile design minimizes snag potential

Secure with powder-actuated tools, self-tapping concrete anchors or screw guns

PRODUCT ATTRIBUTES

Material: Spring Steel

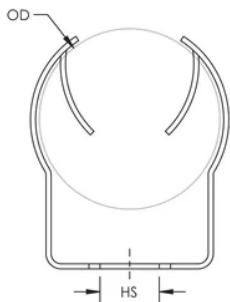
Finish: nVent CADDY Armour

EMT Conduit Size: 1/2";3/4"

Outer Diameter (OD): 0.710" - 1.18"

Hole Size (HS): 1/4"

DIAGRAMS



WARNING

nVent products shall be installed and used only as indicated in nVent's product instruction sheets and training materials. Instruction sheets are available at www.nvent.com and from your nVent customer service representative. Improper installation, misuse, misapplication or other failure to completely follow nVent's instructions and warnings may cause product malfunction, property damage, serious bodily injury and death and/or void your warranty.

North America

+1.800.753.9221

Option 1 – Customer Care

Option 2 – Technical Support

Europe

Netherlands:

+31 800-0200135

France:

+33 800 901 793

Europe

Germany:

800 1890272

Other Countries:

+31 13 5835404

APAC

Shanghai:

+ 86 21 2412 1618/19

Sydney:

+61 2 9751 8500



Our powerful portfolio of brands:
nVent.com CADDY ERICO HOFFMAN RAYCHEM SCHROFF
TRACER