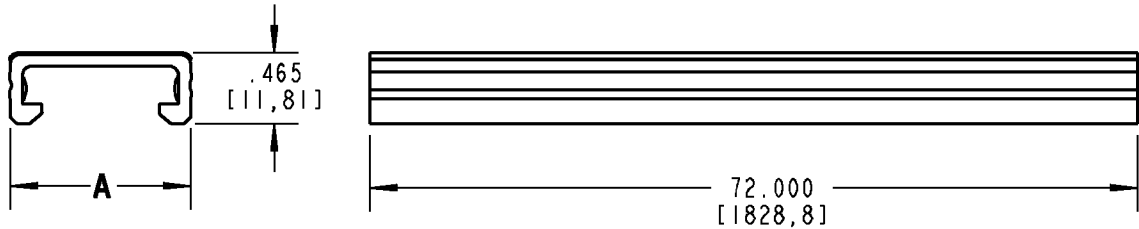




# Ty-Duct



**NOTES:**

1. MATERIAL: RIGID PVC
2. TEMPERATURE RATING: -40°F [-40°C] TO 122°F [50°C]
3. FLAMMABILITY RATING: UL94V-0
4. FLUSH MOUNT DESIGN. COVER SITS FLUSH WITH SIDE WALLS OF DUCT
5. "NO-SLIP" FRICTION BEAD INTERLOCKS WITH DUCT SIDE WALLS TO PREVENT VIBRATION SLIPPAGE

CATALOG NO.	SIZE	A (WIDTH)
TY75CP*6	3/4"	.940 [23,88]
TY1CP*6	1"	1.250 [31,75]
TY15CP*6	1-1/2"	1.750 [44,45]
TY2CP*6	2"	2.250 [57,15]
TY25CP*6	2-1/2"	2.750 [69,85]
TY3CP*6	3"	3.250 [82,55]
TY4CP*6	4"	4.250 [107,95]
TY6CP*6	6"	6.250 [158,75]

\* = COLOR CODE

B = BLACK    G = GRAY    I = INTRINSIC BLUE    W = WHITE

<b>GENERAL NOTES</b>		<b>Thomas &amp; Betts</b> <small>www.tnb.com</small>			
1. ALL DIMENSIONS ARE FOR REFERENCE ONLY. 2. DIMENSIONS IN BRACKETS [ ] ARE IN METRIC UNITS.					
<b>REVISIONS</b>		<b>DESCRIPTION: WIRING DUCT COVER</b>			
2	SEE ERN 2006994 FOR APPROVAL SIGNATURES & RELEASE DATE. PROJECT NO: FD55400	ORIGINAL PROJECT NO / ( ERN NO ) <b>FD55400 / ( 2005724 )</b>	SHEET NO: <b>1 OF 1</b>	REV. NO: <b>2</b>	DRAWING NO: <b>WSD-000187</b>