

# Recessed Power/Low Voltage TV Box™

**NEW!**  
more on reverse

## For Flush-to-the-Wall Mounting of Flat Screen TVs



**2-GANG TVBU505**  
on Stud  
in New  
Construction

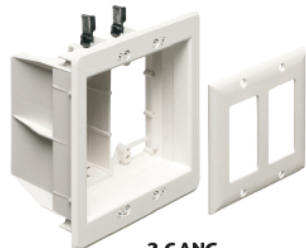


**2-GANG TVBU505**  
in Retrofit

*Two-Gang Power/Low Voltage Box for New Work or Retrofit*



**2-GANG TVBU505**  
(with CED130 cable entry device)



**2-GANG TVBU505**

Arlington's recessed TVBU505 non-metallic combination power and low voltage TV BOX™ is the secure, easy way to mount a flat screen TV flush against a wall. It features power in *one side*; low voltage in *the other* for Class 2 wiring of satellite or cable TV, speakers and more.

The job looks great! Plugs and connectors stay inside this two-gang box, without extending past the wall.

- Non-metallic box with paintable white trim plate
- Easy to install, secure installation in walls up to 1-1/2" thick
- Mounting wings hold box securely against the wall in retrofit projects
- Boxes screw-mount to stud in new construction
- Optional covers available for unused boxes
- Accommodates Arlington's SCOOP™ series entrance plates and hoods
- Other styles available:
  - Steel boxes with plastic trim plate
  - Non-metallic boxes with ground clip (Canada)
- cULus Listed



Scan for details.



**Arlington**

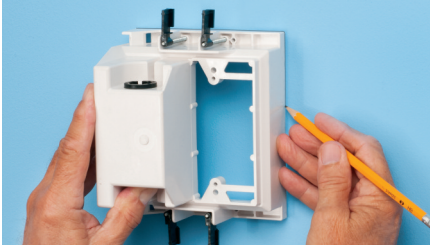
1 Stauffer Industrial Park  
Scranton, PA 18517  
**800/233.4717**  
**Fax 570/562.0646**  
**www.aifittings.com**

Patented/Other patents pending

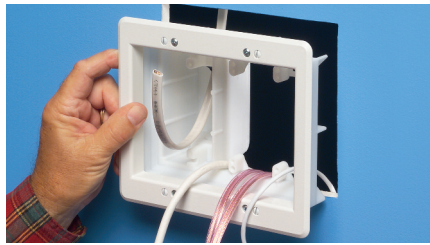
# Recessed Plastic TV Box™

## Power/Low Voltage Combination Box

### RETROFIT - Two-gang TVBU505 shown



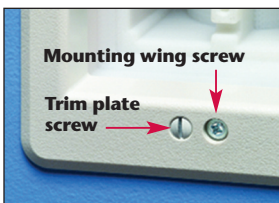
1 Use enclosure (without trim plate) as a template for opening. Cut hole.



2 Cut drywall. Attach trim plate to box. Pull wire/cables. Install box assembly in opening.



3 Tighten mounting wing screws to pull the box securely against the wall.



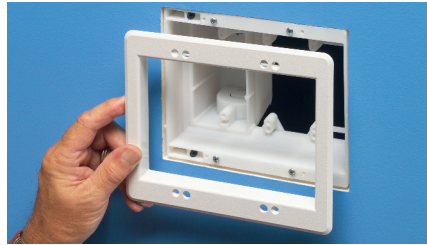
Mounting wing screw

Trim plate screw

### NEW CONSTRUCTION - Three-gang TVBU507 shown



1 Attach box to stud using #6 screws. Use tabs on box for proper positioning of box depth.



3 Attach paintable trim plate with screws provided. See below, left for reference.

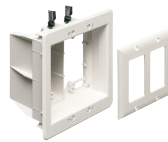


Positioning tabs

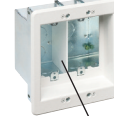
2 Positioning tabs are set for 1/2" and 5/8" drywall.



4 OPTION for new work: Tighten mounting wing screws to pull the box securely against the wall.



Non-Metallic  
2-gang  
TVBU505



STEEL  
2-gang  
TVBS505

Voltage separator



DVFR3C  
2-gang  
cover

CATALOG NUMBER	UPC/DCI/NAED MFG #01 8997	DESCRIPTION	UNIT PKG	STD PKG
TVBU505	09680	Recessed Power/Low Voltage TV BOX with white non-metallic trim plate <b>Two-gang NON-METALLIC</b> Box	1	4
TVBU505GC	08974	Two-gang NON-METALLIC Box w ground clip for Canada	1	4
TVBS505	37955	Two-gang STEEL Box	1	4
DVFR3C	14337	Non-metallic Blank Cover for 2-gang box	10	10
TVBU507	09661	<b>Three-gang NON-METALLIC</b> Box	1	4
TVBU507GC	08976	Three-gang NON-METALLIC Box w ground clip for Canada	1	4
TVBS507	37956	Three-gang STEEL Box	1	4
DVFR3C	10570	Non-metallic Blank Cover for 3-gang box	10	10
TVB613	09630	<b>Four-gang NON-METALLIC</b> Box	1	1
TVB613GC	08968	Four-gang NON-METALLIC Box w ground clip for Canada	1	1
TVBS613	09633	Four-gang STEEL Box	1	1
TVB613C	09631	Non-metallic Blank Cover for 4-gang box	1	1



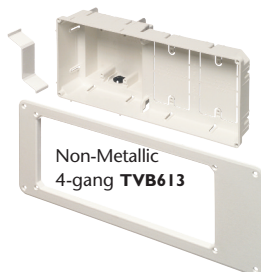
Non-Metallic 3-gang  
TVBU507



DVFR3C  
cover



STEEL 3-gang  
TVBS507



Non-Metallic  
4-gang TVB613



STEEL 4-gang  
TVBS613



TVB613C  
cover

Scan for details.



Distributed by



**Arlington**

1 Stauffer Industrial Park  
Scranton, PA 18517  
800/233.4717  
Fax 570/562.0646  
www.aifittings.com

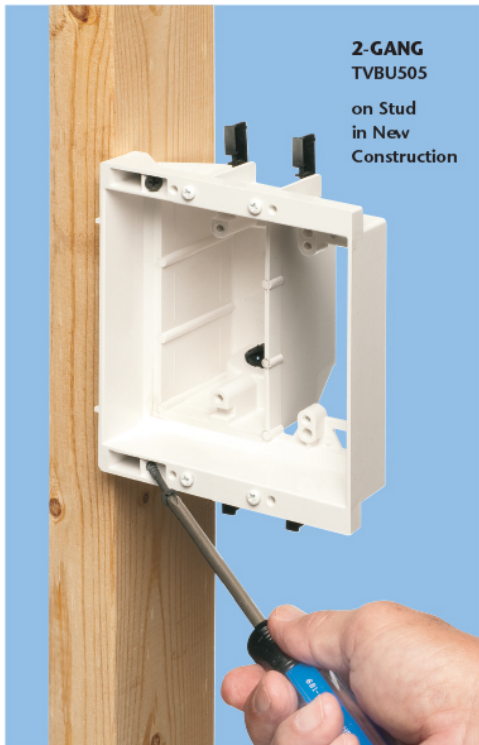
Patented /Other patents pending  
TVBU505 0113/25M



# Recessed Power/Low Voltage TV Box™

**NEW!**  
more on  
reverse

*For Flush-to-the-Wall Mounting of Flat Screen TVs*



**2-GANG  
TVBU505**  
on Stud  
in New  
Construction



**2-GANG  
TVBU505**  
in Retrofit

*Two-Gang Power/Low Voltage Box for New Work or Retrofit*



**2-GANG TVBU505**  
(with CED130 cable entry device)



**2-GANG  
TVBU505**

Arlington's recessed TVBU505 non-metallic combination power and low voltage TV BOX™ is the secure, easy way to mount a flat screen TV flush against a wall. It features power in *one side*; low voltage in *the other* for Class 2 wiring of satellite or cable TV, speakers and more.

The job looks great! Plugs and connectors stay inside this two-gang box, without extending past the wall.

- Non-metallic box with paintable white trim plate
- Easy to install, secure installation in walls up to 1-1/2" thick
- Mounting wings hold box securely against the wall in retrofit projects
- Boxes screw-mount to stud in new construction
- Optional covers available for unused boxes
- Accommodates Arlington's SCOOP™ series entrance plates and hoods
- Other styles available:
  - Steel boxes with plastic trim plate
  - Non-metallic boxes with ground clip (Canada)
- cULus Listed



Scan for details.



**Arlington**

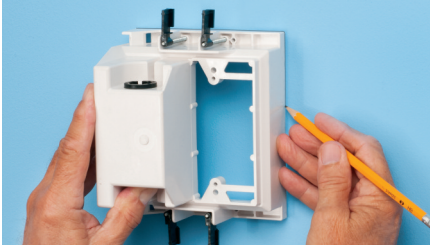
1 Stauffer Industrial Park  
Scranton, PA 18517  
800/233.4717  
Fax 570/562.0646  
www.aifittings.com

Patented/Other patents pending

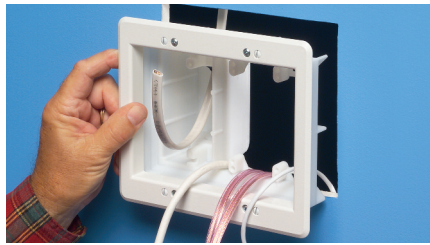
# Recessed Plastic TV Box™

## Power/Low Voltage Combination Box

### RETROFIT - Two-gang TVBU505 shown



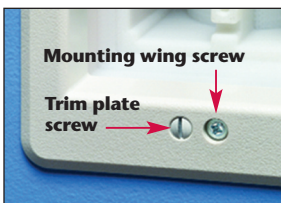
1 Use enclosure (*without trim plate*) as a template for opening. Cut hole.



2 Cut drywall. Attach trim plate to box. Pull wire/cables. Install box assembly in opening.



3 Tighten mounting wing screws to pull the box securely against the wall.



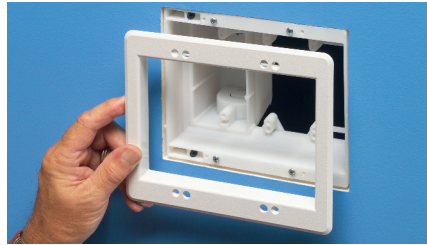
Mounting wing screw

Trim plate screw

### NEW CONSTRUCTION - Three-gang TVBU507 shown



1 Attach box to stud using #6 screws. Use tabs on box for proper positioning of box depth.



3 Attach paintable trim plate with screws provided. See below, left for reference.

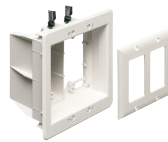


Positioning tabs

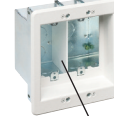
2 Positioning tabs are set for 1/2" and 5/8" drywall.



4 OPTION for new work: Tighten mounting wing screws to pull the box securely against the wall.



Non-Metallic  
2-gang  
TVBU505



STEEL  
2-gang  
TVBS505

Voltage separator



DVFR3C  
2-gang  
cover

CATALOG NUMBER	UPC/DCI/NAED MFG #01 8997	DESCRIPTION	UNIT PKG	STD PKG
TVBU505	09680	Recessed Power/Low Voltage TV BOX with white non-metallic trim plate <b>Two-gang NON-METALLIC</b> Box	1	4
TVBU505GC	08974	Two-gang NON-METALLIC Box w ground clip for Canada	1	4
TVBS505	37955	Two-gang STEEL Box	1	4
DVFR3C	14337	Non-metallic Blank Cover for 2-gang box	10	10
TVBU507	09661	<b>Three-gang NON-METALLIC</b> Box	1	4
TVBU507GC	08976	Three-gang NON-METALLIC Box w ground clip for Canada	1	4
TVBS507	37956	Three-gang STEEL Box	1	4
DVFR3C	10570	Non-metallic Blank Cover for 3-gang box	10	10
TVB613	09630	<b>Four-gang NON-METALLIC</b> Box	1	1
TVB613GC	08968	Four-gang NON-METALLIC Box w ground clip for Canada	1	1
TVBS613	09633	Four-gang STEEL Box	1	1
TVB613C	09631	Non-metallic Blank Cover for 4-gang box	1	1



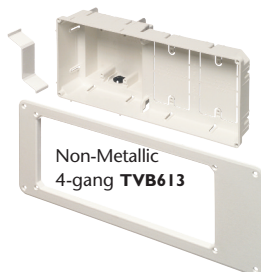
Non-Metallic 3-gang  
TVBU507



DVFR3C  
cover



STEEL 3-gang  
TVBS507



Non-Metallic  
4-gang TVB613



STEEL 4-gang  
TVBS613



TVB613C  
cover

Scan for details.



Distributed by



**Arlington**

1 Stauffer Industrial Park  
Scranton, PA 18517  
800/233.4717  
Fax 570/562.0646  
www.aifittings.com

Patented /Other patents pending  
TVBU505 0113/25M