

# Steel utility boxes & covers

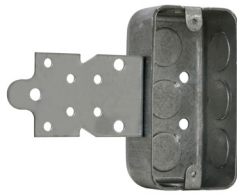
## UTILITY BOXES – CUBIC INCH CAPACITY (SEE BELOW)

4" LONG x 2 1/8" WIDE

UL LISTED



TP588, TP647



TP591



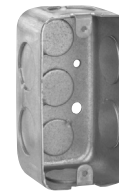
TP592



TP600, TP602



TP598, TP605



TP596



TP594, TP604, TP606

Cat. #	Bracket	Knockouts		Unit qty.	Wt. lbs. per 100
		Sides	Bottom		
<b>1 1/4" deep – 8.5 cubic inch capacity</b>					
TP647	-	8 - 1/2"	3 - 1/2"	50	40
<b>1 1/2" deep – 10.3 cubic inch capacity</b>					
TP588	-	8 - 1/2"	3 - 1/2"	50	42
TP591	"F", set 1/4"	5 - 1/2"	3 - 1/2"	50	51
<b>1 1/2" deep extension rings – 9.0 cubic inch capacity</b>					
TP592 <sup>ⓐ</sup>	-	8 - 1/2"	-	5	31
<b>1 7/8" deep – 13.0 cubic inch capacity</b>					
TP594	-	8 - 1/2"	3 - 1/2"	50	50
TP596	-	6 - 3/4"	3 - 1/2"	50	50
TP598	"S", Set 1/2"	5 - 1/2"	3 - 1/2"	50	60
<b>1 7/8" deep extension rings – 13.0 cubic inch capacity</b>					
TP600 <sup>ⓐ</sup>	-	8 - 1/2"	-	50	44
TP602	-	6 - 3/4"	-	50	41
<b>2 1/8" deep – 14.5 cubic inch capacity</b>					
TP604	-	8 - 1/2"	3 - 1/2"	50	56
TP606	-	6 - 3/4"	3 - 1/2"	50	56
TP605	"S", Set 1/2"	5 - 1/2"	3 - 1/2"	50	66

<sup>ⓐ</sup>cUL Listed.

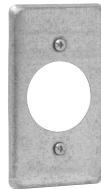
## UTILITY BOX COVERS

UL LISTED

CSA LISTED



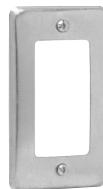
TP608



TP610



TP612



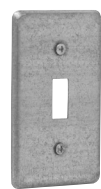
TP613



TP614



TP616



TP618

Cat. #	Description	Unit qty.	Wt. lbs. per 100
TP608	Blank	100	10
TP610	For one single receptacle 1 19/32" (1.594") dia.	100	9
TP612	Single receptacle, 1 13/32" (1.406") dia.	100	9
TP613	For GFCI device	100	7
TP614	1/2" KO	100	10
TP616	Duplex receptacle	100	8
TP618	One toggle switch	100	10

Steel boxes

# Steel utility boxes & covers

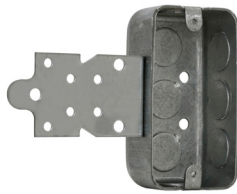
## UTILITY BOXES – CUBIC INCH CAPACITY (SEE BELOW)

4" LONG x 2 1/8" WIDE

UL LISTED



TP588, TP647



TP591



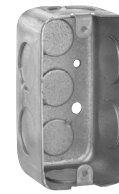
TP592



TP600, TP602



TP598, TP605



TP596



TP594, TP604, TP606

Cat. #	Bracket	Knockouts		Unit qty.	Wt. lbs. per 100
		Sides	Bottom		
<b>1 1/4" deep – 8.5 cubic inch capacity</b>					
TP647	-	8 - 1/2"	3 - 1/2"	50	40
<b>1 1/2" deep – 10.3 cubic inch capacity</b>					
TP588	-	8 - 1/2"	3 - 1/2"	50	42
TP591	"F", set 1/4"	5 - 1/2"	3 - 1/2"	50	51
<b>1 1/2" deep extension rings – 9.0 cubic inch capacity</b>					
TP592 <sup>ⓐ</sup>	-	8 - 1/2"	-	5	31
<b>1 7/8" deep – 13.0 cubic inch capacity</b>					
TP594	-	8 - 1/2"	3 - 1/2"	50	50
TP596	-	6 - 3/4"	3 - 1/2"	50	50
TP598	"S", Set 1/2"	5 - 1/2"	3 - 1/2"	50	60
<b>1 7/8" deep extension rings – 13.0 cubic inch capacity</b>					
TP600 <sup>ⓐ</sup>	-	8 - 1/2"	-	50	44
TP602	-	6 - 3/4"	-	50	41
<b>2 1/8" deep – 14.5 cubic inch capacity</b>					
TP604	-	8 - 1/2"	3 - 1/2"	50	56
TP606	-	6 - 3/4"	3 - 1/2"	50	56
TP605	"S", Set 1/2"	5 - 1/2"	3 - 1/2"	50	66

<sup>ⓐ</sup>cUL Listed.

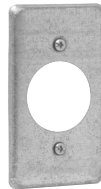
## UTILITY BOX COVERS

UL LISTED

CSA LISTED



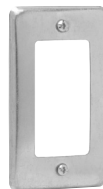
TP608



TP610



TP612



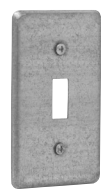
TP613



TP614



TP616



TP618

Cat. #	Description	Unit qty.	Wt. lbs. per 100
TP608	Blank	100	10
TP610	For one single receptacle 1 19/32" (1.594") dia.	100	9
TP612	Single receptacle, 1 13/32" (1.406") dia.	100	9
TP613	For GFCI device	100	7
TP614	1/2" KO	100	10
TP616	Duplex receptacle	100	8
TP618	One toggle switch	100	10

Steel boxes