

# PVC Switch Boxes

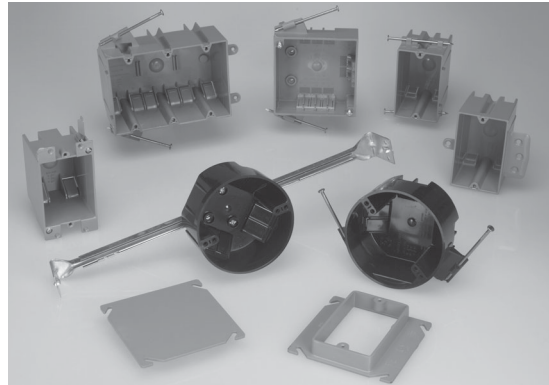
## Applications:

Non-metallic Switch and Outlet Boxes are used:

- In branch circuit wiring as a splice point
- To mount wiring devices such as switches and receptacles
- To provide mechanical protection for wiring systems and electrical devices

## Features:

- Available for use with wood or metal studs to meet any construction preference
- Quick entry feature on all non-metallic boxes offers labor savings – no need to break out knockouts – simply push the non-metallic cable into the box; no tools are required; no need to remove knockouts
- Unique configuration of this quick entry feature on single gang boxes provides a self-feeding feature that eliminates the need to reach inside the box to pull the wire out
- Integral labor saving clamping feature on two, three and four gang boxes; the multiple gang box unique entry also serves as a clamp, eliminating the need to mechanically secure the cable inside the box
- There are no separate clamps or screws to install or tighten; each entry into the multiple gang boxes has the quick entry feature, allowing the installer to simply push the cable into the box without the need for tools or removal of knockouts, so the cable can be inserted where it is required



## Certifications and Compliances:

- UL File No. E-102328
- Classified for use in fire rated (2 HR) wall or ceiling; Fire Rating No. R9933

## Standard Materials:

- PVC (Polyvinyl Chloride Compound)

## SWITCH BOXES – ANGLED NAILS

### UL LISTED



TP1800



TP2000



TP2300

Cat. #	Bracket or Nails	Capacity Cu. In.	H	W	D	Unit Qty.	Wt. Lbs. Per 100
TP1800	Nails	18.0	3 <sup>3</sup> / <sub>4</sub> "	2 <sup>1</sup> / <sub>4</sub> "	2 <sup>3</sup> / <sub>4</sub> "	100	23
TP2000	Nails	20.3	3 <sup>3</sup> / <sub>4</sub> "	2 <sup>1</sup> / <sub>4</sub> "	3 <sup>7</sup> / <sub>16</sub> "	100	25
TP2300	Nails	23.0	3 <sup>3</sup> / <sub>4</sub> "	2 <sup>1</sup> / <sub>4</sub> "	3 <sup>7</sup> / <sub>16</sub> "	100	27

## SWITCH BOXES – INTEGRAL CLAMPS

### UL LISTED



TP1690  
(Old Work)



TP2030  
(For Wood or Metal Stud)

Cat. #	Bracket or Nails	Capacity Cu. In.	H	W	D	Unit Qty.	Wt. Lbs. Per 100
TP1690	Swing Clips and Integral Clamps	16.0	3 <sup>7</sup> / <sub>8</sub> "	2 <sup>7</sup> / <sub>16</sub> "	2 <sup>3</sup> / <sub>4</sub> "	50	20
TP2030	Face Bracket (1/2" Offset)	20.3	3 <sup>11</sup> / <sub>16</sub> "	2 <sup>1</sup> / <sub>4</sub> "	3 <sup>7</sup> / <sub>16</sub> "	100	24

PVC Boxes

# PVC Switch Boxes

## 3" DEEP SWITCH BOXES – TWO GANG

UL LISTED



**TP3490**  
(Old Work)



**TP3600**



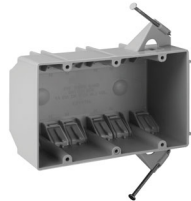
**TP3635**

Cat. #	Bracket or Nails	Capacity Cu. In.	H	W	D	Unit Qty.	Wt. Lbs. Per 100
<b>TP3490</b>	Swing Clips	25.0	3 <sup>9</sup> / <sub>16</sub> "	4"	3 <sup>3</sup> / <sub>16</sub> "	50	29
<b>TP3600</b>	Nails	32.0	3 <sup>3</sup> / <sub>4</sub> "	4"	3"	25	37
<b>TP3635*</b>	Brackets and Nails	48.0	3 <sup>3</sup> / <sub>4</sub> "	4"	3"	50	42

\*Face bracket on PVC Boxes are offset 1/2" unless stated otherwise.

## 2<sup>1</sup>/<sub>16</sub>" DEEP SWITCH BOXES – THREE GANG

UL LISTED



**TP4600**



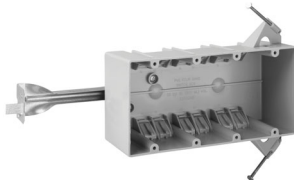
**TP4635**

Cat. #	Bracket or Nails	Capacity Cu. In.	Unit Qty.	Wt. Lbs. Per 100
<b>TP4600</b>	Nails	44.0	50	45
<b>TP4635*</b>	Brackets and Nails	74.0	25	50

\*Face bracket on PVC Boxes are offset 1/2" unless stated otherwise.

## 2<sup>1</sup>/<sub>16</sub>" DEEP SWITCH BOXES – FOUR GANG

UL LISTED



**TP6180**

Cat. #	Bracket or Nails	Capacity Cu. In.	Unit Qty.	Wt. Lbs. Per 100
<b>TP6180†</b>	Nails and Bar Support	55.0	25	85

†Not two hour fire rated.

PVC Boxes

# PVC Switch Boxes

---

## LOW VOLTAGE PARTITION – TWO, THREE OR FOUR GANG PVC



TP1000, TP1001

<b>Cat. #</b>	<b>Use with the Following Boxes</b>	<b>Unit Qty.</b>	<b>Wt. Lbs. Per 100</b>
TP1000	TP3600, TP4600	20	3
TP1001	TP3490, TP3635, TP4635, TP6180	50	4

# PVC Switch Boxes & Covers

## 4" SQUARE WITH INTEGRAL CLAMPS – 18.0 CUBIC INCH CAPACITY

1<sup>5</sup>/<sub>8</sub>" DEEP

UL LISTED



TP1900

Cat. #	Bracket	Capacity Cu. In.	Unit Qty.	Wt. Lbs. Per 100
TP1900	Yes	18.0	75	26

## 4" SQUARE PVC DEVICE COVERS

UL LISTED



TP1013



TP1023

Cat. #	Raised	Capacity Cu. In.	Unit Qty.	Wt. Lbs. Per 100
TP1013	1/2"	3.8	100	8
TP1023	1/2"	5.8	100	8

# PVC Switch Boxes

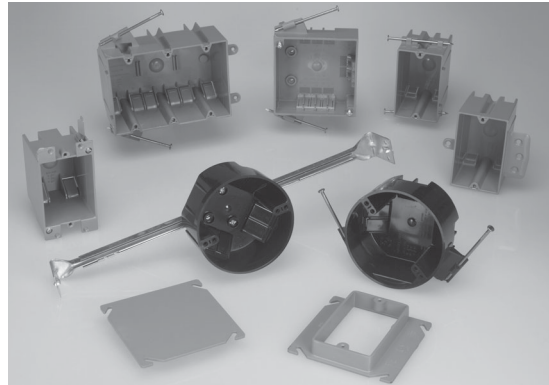
## Applications:

Non-metallic Switch and Outlet Boxes are used:

- In branch circuit wiring as a splice point
- To mount wiring devices such as switches and receptacles
- To provide mechanical protection for wiring systems and electrical devices

## Features:

- Available for use with wood or metal studs to meet any construction preference
- Quick entry feature on all non-metallic boxes offers labor savings – no need to break out knockouts – simply push the non-metallic cable into the box; no tools are required; no need to remove knockouts
- Unique configuration of this quick entry feature on single gang boxes provides a self-feeding feature that eliminates the need to reach inside the box to pull the wire out
- Integral labor saving clamping feature on two, three and four gang boxes; the multiple gang box unique entry also serves as a clamp, eliminating the need to mechanically secure the cable inside the box
- There are no separate clamps or screws to install or tighten; each entry into the multiple gang boxes has the quick entry feature, allowing the installer to simply push the cable into the box without the need for tools or removal of knockouts, so the cable can be inserted where it is required



## Certifications and Compliances:

- UL File No. E-102328
- Classified for use in fire rated (2 HR) wall or ceiling; Fire Rating No. R9933

## Standard Materials:

- PVC (Polyvinyl Chloride Compound)

## SWITCH BOXES – ANGLED NAILS

### UL LISTED



TP1800



TP2000



TP2300

Cat. #	Bracket or Nails	Capacity Cu. In.	H	W	D	Unit Qty.	Wt. Lbs. Per 100
TP1800	Nails	18.0	3 <sup>3</sup> / <sub>4</sub> "	2 <sup>1</sup> / <sub>4</sub> "	2 <sup>3</sup> / <sub>4</sub> "	100	23
TP2000	Nails	20.3	3 <sup>3</sup> / <sub>4</sub> "	2 <sup>1</sup> / <sub>4</sub> "	3 <sup>7</sup> / <sub>16</sub> "	100	25
TP2300	Nails	23.0	3 <sup>3</sup> / <sub>4</sub> "	2 <sup>1</sup> / <sub>4</sub> "	3 <sup>7</sup> / <sub>16</sub> "	100	27

## SWITCH BOXES – INTEGRAL CLAMPS

### UL LISTED



TP1690  
(Old Work)



TP2030  
(For Wood or Metal Studs)

Cat. #	Bracket or Nails	Capacity Cu. In.	H	W	D	Unit Qty.	Wt. Lbs. Per 100
TP1690	Swing Clips and Integral Clamps	16.0	3 <sup>7</sup> / <sub>8</sub> "	2 <sup>7</sup> / <sub>16</sub> "	2 <sup>3</sup> / <sub>4</sub> "	50	20
TP2030	Face Bracket (1/2" Offset)	20.3	3 <sup>11</sup> / <sub>16</sub> "	2 <sup>1</sup> / <sub>4</sub> "	3 <sup>7</sup> / <sub>16</sub> "	100	24

PVC Boxes

# PVC Switch Boxes

## 3" DEEP SWITCH BOXES – TWO GANG

UL LISTED



**TP3490**  
(Old Work)



**TP3600**



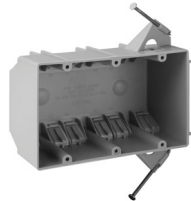
**TP3635**

Cat. #	Bracket or Nails	Capacity Cu. In.	H	W	D	Unit Qty.	Wt. Lbs. Per 100
<b>TP3490</b>	Swing Clips	25.0	3 <sup>9</sup> / <sub>16</sub> "	4"	3 <sup>3</sup> / <sub>16</sub> "	50	29
<b>TP3600</b>	Nails	32.0	3 <sup>3</sup> / <sub>4</sub> "	4"	3"	25	37
<b>TP3635*</b>	Brackets and Nails	48.0	3 <sup>3</sup> / <sub>4</sub> "	4"	3"	50	42

\*Face bracket on PVC Boxes are offset 1/2" unless stated otherwise.

## 2<sup>11</sup>/<sub>16</sub>" DEEP SWITCH BOXES – THREE GANG

UL LISTED



**TP4600**



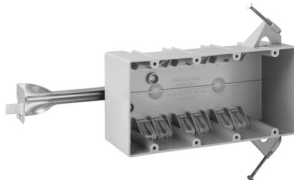
**TP4635**

Cat. #	Bracket or Nails	Capacity Cu. In.	Unit Qty.	Wt. Lbs. Per 100
<b>TP4600</b>	Nails	44.0	50	45
<b>TP4635*</b>	Brackets and Nails	74.0	25	50

\*Face bracket on PVC Boxes are offset 1/2" unless stated otherwise.

## 2<sup>11</sup>/<sub>16</sub>" DEEP SWITCH BOXES – FOUR GANG

UL LISTED



**TP6180**

Cat. #	Bracket or Nails	Capacity Cu. In.	Unit Qty.	Wt. Lbs. Per 100
<b>TP6180†</b>	Nails and Bar Support	55.0	25	85

†Not two hour fire rated.

PVC Boxes

# PVC Switch Boxes

---

## LOW VOLTAGE PARTITION – TWO, THREE OR FOUR GANG PVC



TP1000, TP1001

<b>Cat. #</b>	<b>Use with the Following Boxes</b>	<b>Unit Qty.</b>	<b>Wt. Lbs. Per 100</b>
TP1000	TP3600, TP4600	20	3
TP1001	TP3490, TP3635, TP4635, TP6180	50	4

# PVC Switch Boxes & Covers

## 4" SQUARE WITH INTEGRAL CLAMPS – 18.0 CUBIC INCH CAPACITY

1<sup>5</sup>/<sub>8</sub>" DEEP

UL LISTED



TP1900

Cat. #	Bracket	Capacity Cu. In.	Unit Qty.	Wt. Lbs. Per 100
TP1900	Yes	18.0	75	26

## 4" SQUARE PVC DEVICE COVERS

UL LISTED



TP1013



TP1023

Cat. #	Raised	Capacity Cu. In.	Unit Qty.	Wt. Lbs. Per 100
TP1013	1/2"	3.8	100	8
TP1023	1/2"	5.8	100	8