

Steel Octagon Boxes & Ceiling Pans

3 1/4" ROUND CEILING PANS† – 4.0 CUBIC INCH CAPACITY

1/2" DEEP
CLAMPS IN BOTTOM
FIXTURE RATED
UL LISTED



TP266

Cat. #	Knockouts		Unit Qty.	Wt. Lbs. Per 100
	Cable	Conduit		
TP266	4 - Cable	1 - 1/2"	50	30

†Weight limit for 3 1/4" and 4" Octagon Outlet Boxes and Ceiling Pans is 50 lbs. for fixture/luminaire. Not suitable for fans.

3 1/4" OCTAGON OUTLET BOXES† – 9.0 CUBIC INCH CAPACITY

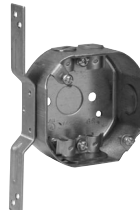
1 1/2" DEEP
FIXTURE RATED
UL LISTED



TP256



TP258



TP259



TP260



TP264

Cat. #	Description	Knockouts		Unit Qty.	Wt. Lbs. Per 100
		Sides	Bottom		
For Conduit – No Clamps					
TP256	-	4 - 1/2"	1 - 1/2"	50	41
TP258	Extension Ring	4 - 1/2"	-	50	31
For Non-metallic Cable with Clamps					
TP259	"S" Bracket, Set 1/2"	4 - Cable, 1 - 1/2"	1 - 1/2"	50	53
TP260	-	4 - Cable, 2 - 1/2"	1 - 1/2"	50	44
TP264	Two Screw Ears	4 - Cable, 2 - 1/2"	1 - 1/2"	50	47

†Weight limit for 3 1/4" and 4" Octagon Outlet Boxes and Ceiling Pans is 50 lbs. for fixture/luminaire. Not suitable for fans.

3 1/4" ROUND CEILING COVERS

UL LISTED



TP270



TP272

Cat. #	Knockouts		Unit Qty.	Wt. Lbs. Per 100
	Cable	Conduit		
TP270	Flat Blank		100	18
TP272	Flat, 1/2" KO in Center		100	18

Steel Boxes

Steel Octagon Boxes & Ceiling Pans

4" ROUND CEILING PANS* – 6.0 CUBIC INCH CAPACITY

1/2" DEEP
FIXTURE RATED
UL LISTED



TP269



TP267

Cat. #	Description	Knockouts		Unit Qty.	Wt. Lbs. Per 100
		Sides	Bottom		
TP269	KOs Only	-	5 - 1/2"	50	35
TP267	KOs and Clamps	-	4 - Cable, 3 - 1/2"	50	39

*Weight limit for 3/4" and 4" Octagon Outlet Boxes and Ceiling Pans is 50 lbs. for fixture. Not suitable for fans.

4" OCTAGON OUTLET BOXES† – 15.5 CUBIC INCH CAPACITY

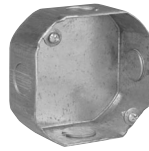
1 1/2" DEEP
FOR CONDUIT – NO CLAMPS
FIXTURE RATED
UL LISTED



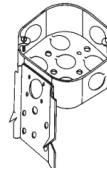
TP274, TP278,
TP834*



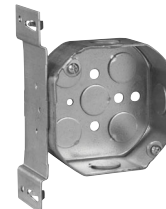
TP276



TP273



TP280



TP282



TP284, TP286

Cat. #	Description	Knockouts		Unit Qty.	Wt. Lbs. Per 100
		Sides	Bottom		
TP274	-	4 - 1/2"	5 - 1/2"	50	50
TP273	Blank Bottom	4 - 1/2"	-	50	51
TP276	-	4 - 3/4"	3 - 1/2", 2 - 3/4"	50	50
TP278	-	2 - 1/2", 2 - 3/4"	3 - 1/2", 2 - 3/4"	50	50
TP280	"C" Bracket	4 - 1/2"	5 - 1/2"	50	60
TP282	"S" Bracket, Set 1/2"	3 - 1/2"	5 - 1/2"	50	58
Air Plenum					
TP834*	For Air Plenum	4 - 1/2"	5 - 1/2"	50	52
Octagon Extension Rings – (Slot & Key Permit Mounting without Removing Box Screws)					
TP284‡	-	4 - 1/2"	-	50	36
TP286‡	-	2 - 1/2", 2 - 3/4"	-	50	36

*For Air Plenum (no mounting holes) - not UL Listed.

†Weight limit for 3/4" and 4" Octagon Outlet Boxes and Ceiling Pans is 50 lbs. for fixture/luminaire. Not suitable for fans.

‡CSA certified.

Steel Boxes

Steel Octagon Boxes & Ceiling Pans

4" OCTAGON OUTLET BOXES† – 15.5 CUBIC INCH CAPACITY

1½" DEEP

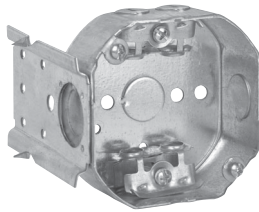
FOR ARMoured & METAL-CLAD (MCI) CABLE – CLAMPS IN EACH END

FIXTURE RATED

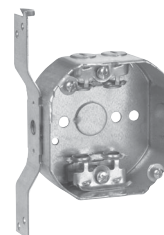
UL LISTED



TP310



TP312



TP314

Cat. #	Description	Knockouts		Unit Qty.	Wt. Lbs. Per 100
		Sides	Bottom		
TP310*	-	4 - Cable, 2 - ½"	1 - ½"	50	57
TP312*	"C" Bracket	4 - Cable, 2 - ½"	1 - ½"	50	66
TP314*	"S" Bracket, Set ½"	4 - Cable, 1 - ½"	1 - ½"	50	64

*UL approved for use with aluminum interlocking grounding metal-clad cable, Type MCIA (Southwire MCAP™).

MCAP™ is a registered trademark of Southwire Company.

†Weight limit for 3¼" and 4" Octagon Outlet Boxes and Ceiling Pans is 50 lbs. for fixture/luminaire. Not suitable for fans.

4" OCTAGON OUTLET BOXES† – 15.5 CUBIC INCH CAPACITY

1½" DEEP

FOR NON-METALLIC CABLE – WITH CLAMPS

FIXTURE RATED

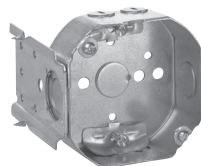
UL LISTED



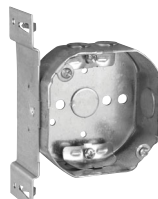
TP298



TP300



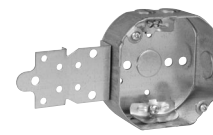
TP302



TP304



TP306



TP308

Cat. #	Description	Knockouts		Unit Qty.	Wt. Lbs. Per 100
		Sides	Bottom		
TP298	-	4 - Cable, 2 - ½"	1 - ½"	50	56
TP300	With Side Nail Holes	4 - Cable, 2 - ½"	1 - ½"	50	55
TP302	"C" Bracket	4 - Cable, 2 - ½"	1 - ½"	50	65
TP304	"S" Bracket, Set ½"	4 - Cable, 1 - ½"	1 - ½"	50	64
TP306	Two Screw Ears	4 - Cable, 2 - ½"	1 - ½"	50	58
TP308	"F" Bracket, Set ½"	4 - Cable, 1 - ½"	1 - ½"	50	64

†Weight limit for 3¼" and 4" Octagon Outlet Boxes and Ceiling Pans is 50 lbs. for fixture/luminaire. Not suitable for fans.

Steel Boxes

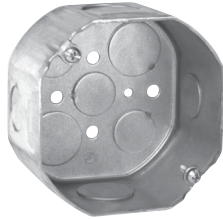
Steel Octagon Boxes & Ceiling Pans

4" OCTAGON OUTLET BOXES† – 21.5 CUBIC INCH CAPACITY

2 1/8" DEEP
FOR CONDUIT – NO CLAMPS
FIXTURE RATED
UL LISTED



TP288, TP290, TP294



TP292, TP838*



TP292RED



TP339

Cat. #	Description	Knockouts		Unit Qty.	Wt. Lbs. Per 100
		Sides	Bottom		
TP288	-	4 - 1/2"	3 - 1/2", 2 - 3/4"	25	64
TP288PF‡	-	4 - 1/2"	3 - 1/2", 2 - 3/4"	25	64
TP290	-	4 - 3/4"	3 - 1/2", 2 - 3/4"	25	64
TP290PF‡	-	4 - 3/4"	3 - 1/2", 2 - 3/4"	25	64
TP292	-	2 - 1/2", 2 - 3/4"	3 - 1/2", 2 - 3/4"	25	64
TP292PF‡	-	2 - 1/2", 2 - 3/4"	3 - 1/2", 2 - 3/4"	25	64
TP292RED	-	2 - 1/2", 2 - 3/4"	3 - 1/2", 2 - 3/4"	25	64
TP294	-	4 - 1"	3 - 1/2", 2 - 3/4"	25	64
TP339	Blank Bottom	4 - 1/2"	-	25	65
Air Plenum					
TP838*	For Air Plenum	2 - 1/2", 2 - 3/4"	3 - 1/2", 2 - 3/4"	25	62

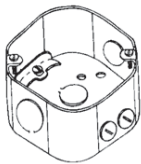
*For Air Plenum (no mounting holes) - not UL Listed.

†Weight limit for 3/4" and 4" Octagon Outlet Boxes and Ceiling Pans is 50 lbs. for fixture/luminaire. Not suitable for fans.

‡TP catalog numbers ending in PF include ground screw with pigtail lead.

4" OCTAGON OUTLET BOXES† – 21.5 CUBIC INCH CAPACITY

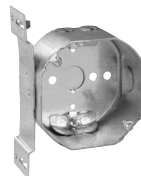
2 1/8" DEEP – WITH CABLE CLAMPS
FIXTURE RATED
UL LISTED



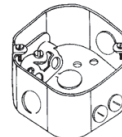
TP316



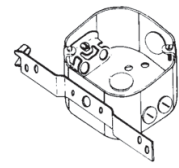
TP318



TP320



TP317



TP338

Cat. #	Description	Knockouts		Unit Qty.	Wt. Lbs. Per 100
		Sides	Bottom		
For Non-metallic Cable					
TP316	-	4 - Cable, 2 - 1/2"	1 - 1/2"	25	68
TP318	"C" Bracket	4 - Cable, 2 - 1/2"	1 - 1/2"	25	88
TP320	"S" Bracket, Set 1/2"	4 - Cable, 1 - 1/2"	1 - 1/2"	25	81
For Armoured & Metal-clad (MCI) Cable – Clamps in Each End					
TP317*	-	4 - Cable, 2 - 1/2"	1 - 1/2"	25	69
TP338*	"S" Bracket, Set 1/2"	4 - Cable, 1 - 1/2"	1 - 1/2"	25	82
TP338PF‡	"S" Bracket, Set 1/2"	4 - Cable, 1 - 1/2"	1 - 1/2"	25	82

*UL approved for use with aluminum interlocking grounding metal-clad cable, Type MCIA (Southwire MCAP™).

MCAP™ is a registered trademark of Southwire Company.

†Weight limit for 3/4" and 4" Octagon Outlet Boxes and Ceiling Pans is 50 lbs. for fixture/luminaire. Not suitable for fans.

‡TP catalog numbers ending in PF include ground screw with pigtail lead.

Steel Boxes

Steel Octagon Covers & Accessories

4" OCTAGON BOX & ADJUSTABLE BAR SETS – 15.5 CUBIC INCH CAPACITY

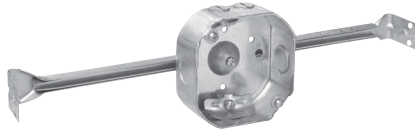
1½" DEEP BOX SETS
FIXTURE RATED

UL LISTED

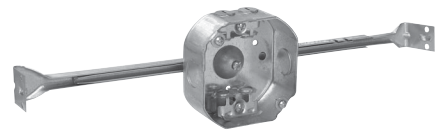
Weight limits: 50 lbs. at 16".



TP372



TP377



TP367

Cat. #	Stud Spacing	Stud	Unit Qty.	Wt. Lbs. Per 100
For Conduit – No Clamps				
TP372*	16"	Yes	25	85
For Non-metallic Cable – with Clamps				
TP377	16"	-	25	102
For Armoured & Metal-clad (MCI) Cable – Clamps in Each End				
TP367	16"	-	25	100
TP367PF†	16"	-	25	100

*4" Octagon Box and Adjustable Bar Sets have ½" KOs for conduit.
†TP catalog numbers ending in PF include ground screw with pigtail lead.

ADJUSTABLE BAR HANGERS

UL LISTED

Features:

- Holding prong holds box in place for nailing
- Design resists bending and twisting
- Locking tabs to hold bar in position

Steel Boxes



TP356



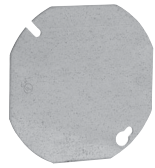
TP352

Cat. #	Stud Spacing	Fan Rated	16" Fan Weight (Lbs.)	24" Fan Weight (Lbs.)	Fixture Rated	16" Fixture Weight (Lbs.)	24" Fixture Weight (Lbs.)	Unit Qty.	Wt. Lbs. Per 100
TP356	16"	No	-	-	Yes	50	-	50	41.0
TP352	16" - 24"	Yes	70	-	Yes	90	50	50	34.1

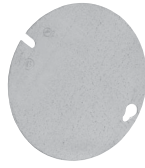
Steel Octagon Covers & Accessories

4" OCTAGON BOX COVERS – CUBIC CAPACITY (SEE BELOW)

UL LISTED



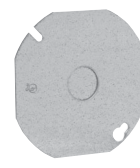
TP322, TP853*



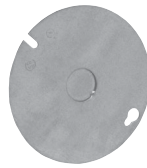
TP323



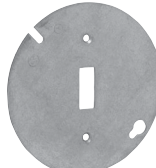
TP326, TP331,
TP332, TP333



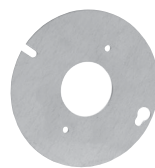
TP328



TP329



TP335



TP334



TP336

Cat. #	Description	Capacity Cu. In.	Unit Qty.	Wt. Lbs. Per 100
TP322†	Flat Blank, Octagon Shape	-	50	22
TP322RED†	Flat Blank, Octagon Shape	-	50	22
TP323†	Flat Blank, Round Shape	-	50	24
TP333	Raised 1", Open with Ears 2 ³ / ₄ "	7.0	25	30
TP332	Raised 1/2", Open with Ears 2 ³ / ₄ "	3.3	50	22
TP326	Raised 3/8", Open with Ears 2 ³ / ₄ "	3.8	50	20
TP331	Raised 3/4", Open with Ears 2 ³ / ₄ "	5.0	50	26
TP328†	Flat with 1/2" KO, Octagon Shape	-	50	22
TP329†	Flat with 1/2" KO, Round Shape	-	50	24
TP335	Flat, for Toggle Switch	-	50	23
TP334‡	Flat, Single Receptacle 1 ¹³ / ₃₂ "	-	50	21
TP336	Flat, for Duplex Receptacle	-	50	18
Air Plenum				
TP853*‡	Flat, Blank with PVC Gasket	-	50	24

*For Air Plenum (no mounting holes).

†CSA certified.

‡Not UL Listed.

FLEXIBLE FIXTURE HANGERS

TPRFH Flexible Fixture Hangers are used in commercial or light industrial applications where HID high bay and low bay lighting fixtures are used. Specific applications include storage facilities, shipping warehouses, retail and DIY facilities.

Features:

- Suitable for use with 1/2" or 3/4" fixture conduit stems, these hangers allow the conduit stem of the fixture (luminaire) to swing in any direction; maximum swing angle is 26° from vertical max. slope angles 22 1/2°
- Available for attachment to round or octagonal steel boxes
- Quickly and easily attached by two screws
- Hangers are drilled and tapped for use with 3/4" conduit stem as standard and come supplied with a 3/4" - 1/2" reducer for 1/2" conduit stem applications

Certifications and Compliances:

- UL1598
- CSA C22.2 No. 250
- Suitable for damp locations



Standard Materials and Finishes:

- Material – sheet steel
- Finish – zinc chromate for corrosion resistance

Cat. #	Description	Support Wt. (Lbs.)
TPRFH12	For use with 4" Round or Octagon Boxes	50

Steel Boxes

Steel Octagon Boxes & Ceiling Pans

3 1/4" ROUND CEILING PANS† – 4.0 CUBIC INCH CAPACITY

1/2" DEEP
CLAMPS IN BOTTOM
FIXTURE RATED
UL LISTED



TP266

Cat. #	Knockouts		Unit Qty.	Wt. Lbs. Per 100
	Cable	Conduit		
TP266	4 - Cable	1 - 1/2"	50	30

†Weight limit for 3 1/4" and 4" Octagon Outlet Boxes and Ceiling Pans is 50 lbs. for fixture/luminaire. Not suitable for fans.

3 1/4" OCTAGON OUTLET BOXES† – 9.0 CUBIC INCH CAPACITY

1 1/2" DEEP
FIXTURE RATED
UL LISTED



TP256



TP258



TP259



TP260



TP264

Cat. #	Description	Knockouts		Unit Qty.	Wt. Lbs. Per 100
		Sides	Bottom		
For Conduit – No Clamps					
TP256	-	4 - 1/2"	1 - 1/2"	50	41
TP258	Extension Ring	4 - 1/2"	-	50	31
For Non-metallic Cable with Clamps					
TP259	"S" Bracket, Set 1/2"	4 - Cable, 1 - 1/2"	1 - 1/2"	50	53
TP260	-	4 - Cable, 2 - 1/2"	1 - 1/2"	50	44
TP264	Two Screw Ears	4 - Cable, 2 - 1/2"	1 - 1/2"	50	47

†Weight limit for 3 1/4" and 4" Octagon Outlet Boxes and Ceiling Pans is 50 lbs. for fixture/luminaire. Not suitable for fans.

3 1/4" ROUND CEILING COVERS

UL LISTED



TP270



TP272

Cat. #	Knockouts		Unit Qty.	Wt. Lbs. Per 100
	Cable	Conduit		
TP270	Flat Blank		100	18
TP272	Flat, 1/2" KO in Center		100	18

Steel Boxes

Steel Octagon Boxes & Ceiling Pans

4" ROUND CEILING PANS* – 6.0 CUBIC INCH CAPACITY

1/2" DEEP
FIXTURE RATED
UL LISTED



TP269



TP267

Cat. #	Description	Knockouts		Unit Qty.	Wt. Lbs. Per 100
		Sides	Bottom		
TP269	KOs Only	-	5 - 1/2"	50	35
TP267	KOs and Clamps	-	4 - Cable, 3 - 1/2"	50	39

*Weight limit for 3/4" and 4" Octagon Outlet Boxes and Ceiling Pans is 50 lbs. for fixture. Not suitable for fans.

4" OCTAGON OUTLET BOXES† – 15.5 CUBIC INCH CAPACITY

1 1/2" DEEP
FOR CONDUIT – NO CLAMPS
FIXTURE RATED
UL LISTED



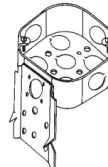
TP274, TP278,
TP834*



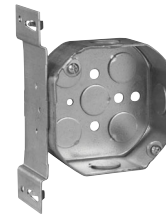
TP276



TP273



TP280



TP282



TP284, TP286

Cat. #	Description	Knockouts		Unit Qty.	Wt. Lbs. Per 100
		Sides	Bottom		
TP274	-	4 - 1/2"	5 - 1/2"	50	50
TP273	Blank Bottom	4 - 1/2"	-	50	51
TP276	-	4 - 3/4"	3 - 1/2", 2 - 3/4"	50	50
TP278	-	2 - 1/2", 2 - 3/4"	3 - 1/2", 2 - 3/4"	50	50
TP280	"C" Bracket	4 - 1/2"	5 - 1/2"	50	60
TP282	"S" Bracket, Set 1/2"	3 - 1/2"	5 - 1/2"	50	58
Air Plenum					
TP834*	For Air Plenum	4 - 1/2"	5 - 1/2"	50	52
Octagon Extension Rings – (Slot & Key Permit Mounting without Removing Box Screws)					
TP284‡	-	4 - 1/2"	-	50	36
TP286‡	-	2 - 1/2", 2 - 3/4"	-	50	36

*For Air Plenum (no mounting holes) - not UL Listed.

†Weight limit for 3/4" and 4" Octagon Outlet Boxes and Ceiling Pans is 50 lbs. for fixture/luminaire. Not suitable for fans.

‡CSA certified.

Steel Boxes

Steel Octagon Boxes & Ceiling Pans

4" OCTAGON OUTLET BOXES† – 15.5 CUBIC INCH CAPACITY

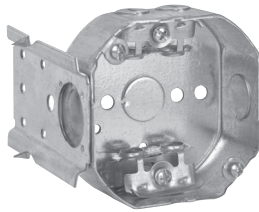
1½" DEEP

FOR ARMoured & METAL-CLAD (MCI) CABLE – CLAMPS IN EACH END
FIXTURE RATED

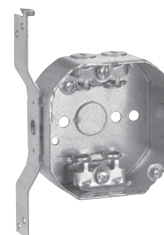
UL LISTED



TP310



TP312



TP314

Cat. #	Description	Knockouts		Unit Qty.	Wt. Lbs. Per 100
		Sides	Bottom		
TP310*	-	4 - Cable, 2 - ½"	1 - ½"	50	57
TP312*	"C" Bracket	4 - Cable, 2 - ½"	1 - ½"	50	66
TP314*	"S" Bracket, Set ½"	4 - Cable, 1 - ½"	1 - ½"	50	64

*UL approved for use with aluminum interlocking grounding metal-clad cable, Type MCIA (Southwire MCAP™).

MCAP™ is a registered trademark of Southwire Company.

†Weight limit for 3¼" and 4" Octagon Outlet Boxes and Ceiling Pans is 50 lbs. for fixture/luminaire. Not suitable for fans.

4" OCTAGON OUTLET BOXES† – 15.5 CUBIC INCH CAPACITY

1½" DEEP

FOR NON-METALLIC CABLE – WITH CLAMPS
FIXTURE RATED

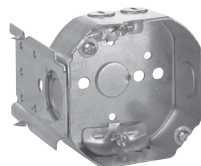
UL LISTED



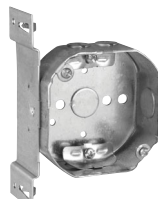
TP298



TP300



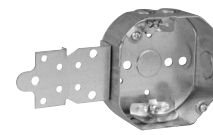
TP302



TP304



TP306



TP308

Cat. #	Description	Knockouts		Unit Qty.	Wt. Lbs. Per 100
		Sides	Bottom		
TP298	-	4 - Cable, 2 - ½"	1 - ½"	50	56
TP300	With Side Nail Holes	4 - Cable, 2 - ½"	1 - ½"	50	55
TP302	"C" Bracket	4 - Cable, 2 - ½"	1 - ½"	50	65
TP304	"S" Bracket, Set ½"	4 - Cable, 1 - ½"	1 - ½"	50	64
TP306	Two Screw Ears	4 - Cable, 2 - ½"	1 - ½"	50	58
TP308	"F" Bracket, Set ½"	4 - Cable, 1 - ½"	1 - ½"	50	64

†Weight limit for 3¼" and 4" Octagon Outlet Boxes and Ceiling Pans is 50 lbs. for fixture/luminaire. Not suitable for fans.

Steel Boxes

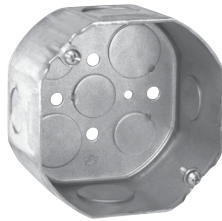
Steel Octagon Boxes & Ceiling Pans

4" OCTAGON OUTLET BOXES† – 21.5 CUBIC INCH CAPACITY

2 1/8" DEEP
FOR CONDUIT – NO CLAMPS
FIXTURE RATED
UL LISTED



TP288, TP290, TP294



TP292, TP838*



TP292RED



TP339

Cat. #	Description	Knockouts		Unit Qty.	Wt. Lbs. Per 100
		Sides	Bottom		
TP288	-	4 - 1/2"	3 - 1/2", 2 - 3/4"	25	64
TP288PF‡	-	4 - 1/2"	3 - 1/2", 2 - 3/4"	25	64
TP290	-	4 - 3/4"	3 - 1/2", 2 - 3/4"	25	64
TP290PF‡	-	4 - 3/4"	3 - 1/2", 2 - 3/4"	25	64
TP292	-	2 - 1/2", 2 - 3/4"	3 - 1/2", 2 - 3/4"	25	64
TP292PF‡	-	2 - 1/2", 2 - 3/4"	3 - 1/2", 2 - 3/4"	25	64
TP292RED	-	2 - 1/2", 2 - 3/4"	3 - 1/2", 2 - 3/4"	25	64
TP294	-	4 - 1"	3 - 1/2", 2 - 3/4"	25	64
TP339	Blank Bottom	4 - 1/2"	-	25	65
Air Plenum					
TP838*	For Air Plenum	2 - 1/2", 2 - 3/4"	3 - 1/2", 2 - 3/4"	25	62

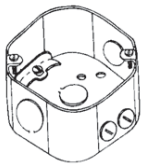
*For Air Plenum (no mounting holes) - not UL Listed.

†Weight limit for 3/4" and 4" Octagon Outlet Boxes and Ceiling Pans is 50 lbs. for fixture/luminaire. Not suitable for fans.

‡TP catalog numbers ending in PF include ground screw with pigtail lead.

4" OCTAGON OUTLET BOXES† – 21.5 CUBIC INCH CAPACITY

2 1/8" DEEP – WITH CABLE CLAMPS
FIXTURE RATED
UL LISTED



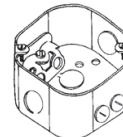
TP316



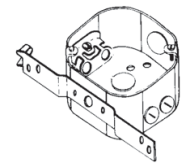
TP318



TP320



TP317



TP338

Cat. #	Description	Knockouts		Unit Qty.	Wt. Lbs. Per 100
		Sides	Bottom		
For Non-metallic Cable					
TP316	-	4 - Cable, 2 - 1/2"	1 - 1/2"	25	68
TP318	"C" Bracket	4 - Cable, 2 - 1/2"	1 - 1/2"	25	88
TP320	"S" Bracket, Set 1/2"	4 - Cable, 1 - 1/2"	1 - 1/2"	25	81
For Armoured & Metal-clad (MCI) Cable – Clamps in Each End					
TP317*	-	4 - Cable, 2 - 1/2"	1 - 1/2"	25	69
TP338*	"S" Bracket, Set 1/2"	4 - Cable, 1 - 1/2"	1 - 1/2"	25	82
TP338PF‡	"S" Bracket, Set 1/2"	4 - Cable, 1 - 1/2"	1 - 1/2"	25	82

*UL approved for use with aluminum interlocking grounding metal-clad cable, Type MCIA (Southwire MCAP™).

MCAP™ is a registered trademark of Southwire Company.

†Weight limit for 3/4" and 4" Octagon Outlet Boxes and Ceiling Pans is 50 lbs. for fixture/luminaire. Not suitable for fans.

‡TP catalog numbers ending in PF include ground screw with pigtail lead.

Steel Boxes

Steel Octagon Covers & Accessories

4" OCTAGON BOX & ADJUSTABLE BAR SETS – 15.5 CUBIC INCH CAPACITY

1½" DEEP BOX SETS
FIXTURE RATED

UL LISTED

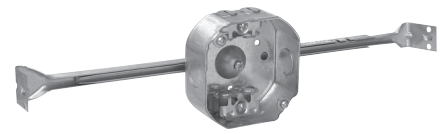
Weight limits: 50 lbs. at 16".



TP372



TP377



TP367

Cat. #	Stud Spacing	Stud	Unit Qty.	Wt. Lbs. Per 100
For Conduit – No Clamps				
TP372*	16"	Yes	25	85
For Non-metallic Cable – with Clamps				
TP377	16"	-	25	102
For Armoured & Metal-clad (MCI) Cable – Clamps in Each End				
TP367	16"	-	25	100
TP367PF†	16"	-	25	100

*4" Octagon Box and Adjustable Bar Sets have ½" KOs for conduit.
†TP catalog numbers ending in PF include ground screw with pigtail lead.

ADJUSTABLE BAR HANGERS

UL LISTED

Features:

- Holding prong holds box in place for nailing
- Design resists bending and twisting
- Locking tabs to hold bar in position

Steel Boxes



TP356



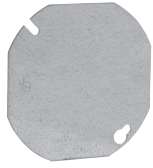
TP352

Cat. #	Stud Spacing	Fan Rated	16" Fan Weight (Lbs.)	24" Fan Weight (Lbs.)	Fixture Rated	16" Fixture Weight (Lbs.)	24" Fixture Weight (Lbs.)	Unit Qty.	Wt. Lbs. Per 100
TP356	16"	No	-	-	Yes	50	-	50	41.0
TP352	16" - 24"	Yes	70	-	Yes	90	50	50	34.1

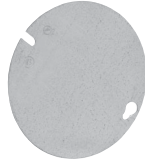
Steel Octagon Covers & Accessories

4" OCTAGON BOX COVERS – CUBIC CAPACITY (SEE BELOW)

UL LISTED



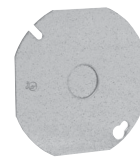
TP322, TP853*



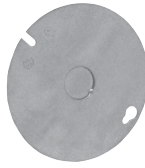
TP323



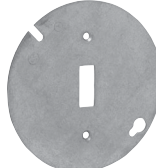
TP326, TP331,
TP332, TP333



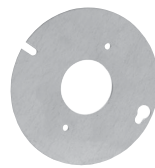
TP328



TP329



TP335



TP334



TP336

Cat. #	Description	Capacity Cu. In.	Unit Qty.	Wt. Lbs. Per 100
TP322†	Flat Blank, Octagon Shape	-	50	22
TP322RED†	Flat Blank, Octagon Shape	-	50	22
TP323†	Flat Blank, Round Shape	-	50	24
TP333	Raised 1", Open with Ears 2 ³ / ₄ "	7.0	25	30
TP332	Raised 1/2", Open with Ears 2 ³ / ₄ "	3.3	50	22
TP326	Raised 3/8", Open with Ears 2 ³ / ₄ "	3.8	50	20
TP331	Raised 3/4", Open with Ears 2 ³ / ₄ "	5.0	50	26
TP328†	Flat with 1/2" KO, Octagon Shape	-	50	22
TP329†	Flat with 1/2" KO, Round Shape	-	50	24
TP335	Flat, for Toggle Switch	-	50	23
TP334‡	Flat, Single Receptacle 1 ¹³ / ₃₂ "	-	50	21
TP336	Flat, for Duplex Receptacle	-	50	18
Air Plenum				
TP853*‡	Flat, Blank with PVC Gasket	-	50	24

*For Air Plenum (no mounting holes).

†CSA certified.

‡Not UL Listed.

FLEXIBLE FIXTURE HANGERS

TPRFH Flexible Fixture Hangers are used in commercial or light industrial applications where HID high bay and low bay lighting fixtures are used. Specific applications include storage facilities, shipping warehouses, retail and DIY facilities.

Features:

- Suitable for use with 1/2" or 3/4" fixture conduit stems, these hangers allow the conduit stem of the fixture (luminaire) to swing in any direction; maximum swing angle is 26° from vertical max. slope angles 22 1/2°
- Available for attachment to round or octagonal steel boxes
- Quickly and easily attached by two screws
- Hangers are drilled and tapped for use with 3/4" conduit stem as standard and come supplied with a 3/4" - 1/2" reducer for 1/2" conduit stem applications

Certifications and Compliances:

- UL1598
- CSA C22.2 No. 250
- Suitable for damp locations



Standard Materials and Finishes:

- Material – sheet steel
- Finish – zinc chromate for corrosion resistance

Cat. #	Description	Support Wt. (Lbs.)
TPRFH12	For use with 4" Round or Octagon Boxes	50

Steel Boxes