

FIRESTOP PUTTY

SSP INTUMESCENT FIRESTOP PUTTY



Non-hardening, intumescent putty is easily installed and removed making it the perfect choice for cable penetrations requiring occasional retrofitting.

FEATURES & BENEFITS:

- Non-hardening for easy installation and retrofitting of cables.
- Two-stage intumescence provides aggressive expansion.
- Highly adhesive: stays put!
- Unaffected by humidity, condensation, water.
- Soft, pliable, easy to install.
- Tested and proven acoustical properties.
- No tools required.
- UL Classified (up to 3 hr.)
- FM Approved.



APPLICATIONS

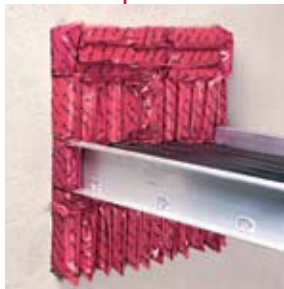
- Small to medium openings through common constructions.
- Single or multiple cables for power, voice, data.
- Single or multiple cable trays for power, voice, data.
- Sleeved openings for cable bundles
- Conduits.

| ORDERING INFORMATION | | | | | |
|----------------------|--------|-------------------------------|------|-----------|--------------------|
| UPC # | Part # | Description | Qty. | Case Qty. | Weight Each - lbs. |
| 02100 | SSP100 | Putty 36 Cu. In. Tube (.6 L) | 1 | 6 | 2.30 |
| 02200 | SSP28 | Putty 24 Cu. In. Tube (.39 L) | 1 | 1 | 1.85 |



FIRESTOP PILLOWS

SSB INTUMESCENT FIRESTOP PILLOWS



Compressible cushions can be easily installed and removed. The perfect firestop solution for medium to large openings including cable bundles, cable trays, bus ducts and multiple conduits.

FEATURES & BENEFITS:

- Intumescent - expands in all directions for a tough, tight seal.
- Re-installable for easy retrofitting of cables.
- Single side application makes installation easy for tough access openings.
- Heat-sealed poly cover protects core and makes pillows slide in and out with ease.
- Superior air leakage ratings!
- Broad base of tested systems.
- UL Classified (up to 4 hr.)
- FM Approved.



APPLICATIONS

- Medium to large openings through common constructions.
- Loose cable for power, voice, data.
- Single or multiple cable trays for power, voice, data.
- Bus ducts.
- Multiple metallic conduits & tubing.
- Multiple, mixed penetrants of all types.



| ORDERING INFORMATION | | | | | |
|----------------------|--------|---|------|-----------|--------------------|
| UPC # | Part # | Description | Qty. | Case Qty. | Weight Each - lbs. |
| 06140 | SSB14 | Firestop Pillow 1"x 4"x 9" (2.5 x 10 x 23 cm) | 1 | 20 | 0.18 |
| 06240 | SSB24 | Firestop Pillow 2"x 4"x 9" (5.0 x 10 x 23 cm) | 1 | 10 | 0.27 |
| 06260 | SSB26 | Firestop Pillow 2"x 6"x 9" (5.0 x 15 x 23 cm) | 1 | 22 | 0.35 |
| 06360 | SSB36 | Firestop Pillow 3"x 6"x 9" (7.6 x 15 x 23 cm) | 1 | 16 | 0.48 |



SSP INTUMESCENT FIRESTOP PUTTY



Non-hardening, intumescent putty is easily installed and removed making it the perfect choice for cable penetrations requiring occasional retrofitting.

FEATURES & BENEFITS:

- Non-hardening for easy installation and retrofitting of cables.
- Two-stage intumescence provides aggressive expansion.
- Highly adhesive: stays put!
- Unaffected by humidity, condensation, water.
- Soft, pliable, easy to install.
- Tested and proven acoustical properties.
- No tools required.
- UL Classified (up to 3 hr.)
- FM Approved.



APPLICATIONS

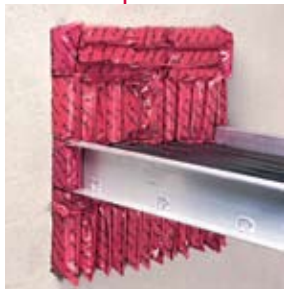
- Small to medium openings through common constructions.
- Single or multiple cables for power, voice, data.
- Single or multiple cable trays for power, voice, data.
- Sleeved openings for cable bundles
- Conduits.

| ORDERING INFORMATION | | | | | |
|----------------------|--------|-------------------------------|------|-----------|--------------------|
| UPC # | Part # | Description | Qty. | Case Qty. | Weight Each - lbs. |
| 02100 | SSP100 | Putty 36 Cu. In. Tube (.6 L) | 1 | 6 | 2.30 |
| 02200 | SSP28 | Putty 24 Cu. In. Tube (.39 L) | 1 | 1 | 1.85 |



FIRESTOP PILLOWS

SSB INTUMESCENT FIRESTOP PILLOWS



Compressible cushions can be easily installed and removed. The perfect firestop solution for medium to large openings including cable bundles, cable trays, bus ducts and multiple conduits.

FEATURES & BENEFITS:

- Intumescent - expands in all directions for a tough, tight seal.
- Re-installable for easy retrofitting of cables.
- Single side application makes installation easy for tough access openings.
- Heat-sealed poly cover protects core and makes pillows slide in and out with ease.
- Superior air leakage ratings!
- Broad base of tested systems.
- UL Classified (up to 4 hr.)
- FM Approved.



APPLICATIONS

- Medium to large openings through common constructions.
- Loose cable for power, voice, data.
- Single or multiple cable trays for power, voice, data.
- Bus ducts.
- Multiple metallic conduits & tubing.
- Multiple, mixed penetrants of all types.



| ORDERING INFORMATION | | | | | |
|----------------------|--------|---|------|-----------|--------------------|
| UPC # | Part # | Description | Qty. | Case Qty. | Weight Each - lbs. |
| 06140 | SSB14 | Firestop Pillow 1"x 4"x 9" (2.5 x 10 x 23 cm) | 1 | 20 | 0.18 |
| 06240 | SSB24 | Firestop Pillow 2"x 4"x 9" (5.0 x 10 x 23 cm) | 1 | 10 | 0.27 |
| 06260 | SSB26 | Firestop Pillow 2"x 6"x 9" (5.0 x 15 x 23 cm) | 1 | 22 | 0.35 |
| 06360 | SSB36 | Firestop Pillow 3"x 6"x 9" (7.6 x 15 x 23 cm) | 1 | 16 | 0.48 |

