

SPECIFICATION & FEATURES

SIMPLE SUPPORT BRACKET & UNIVERSAL MOUNTING ADAPTER

DESCRIPTION:

Orbit's latest innovation, the Simple Support Bracket, SSB, works alongside Orbit's Universal Mounting Adapter, UMA, and Stud Mounting Adjustable Ring Series, WBAR1G and 2G to form a versatile Stud Bracket System. This system provides the installer with a solution for mounting boxes and devices between studs.

CERTIFICATION:

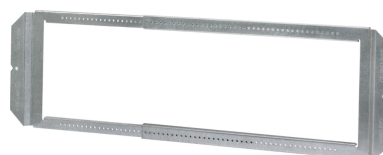
UL file E310661, conforms to UL514A

FEATURES:

- Telescoping bracket adjusts from 15" to 25"
- SSB can be preassembled to save time and reduce injury on the job site
- UMA can either mount-to-stud directly or clip onto bracket
- Rigidity eliminates need for far-side back support
- Markings on Bracket allow for quick and consistent adjustability



SSB-4S



SSB



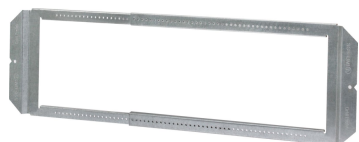
UMA



CONFIGURATION DATA:

Part No.	Description	Sides K.O.	Bottom K.O.	Std.Pkg.
SSB	Simple Support Bracket adjusts from 15" to 25" for mounting boxes horizontally between stud	-	-	25
SSB-4S	Preassembled SSB with UMA and 4" (4S) 2-1/8" Deep Box with 10" Ground Pigtail	(8) - 1/2", (4) - 3/4"	(2) - 1/2", (2) - 3/4"	12
SSB-4S-MKO	Preassembled SSB with UMA and 4" (4S) 2-1/8" Deep Box with 10" Ground Pigtail	(8) - 1/2", (4) - MKO	(2) - 1/2", (2) - MKO	12
SSB-5S-MKO	Preassembled SSB with UMA and 4-11/16" (5S) 2-1/8" Deep Box with MKO and 10" Ground Pigtail	(2) - 1/2", (10) - MKO	(2) - 1/2", (2) - MKO	12
UMA	Universal Mounting Adapter for mounting 4S and 5S boxes to SSB, USB, and directly to stud	-	-	25

*SSB must be accompanied with either UMA, WBAR1G or WBAR2G mounting brackets to attach a steel box



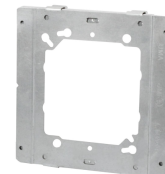
SSB



SSB-4S
SSB-4S-MKO



SSB-5S-MKO



UMA



SPECIFICATION & FEATURES

SIMPLE SUPPORT BRACKET & UNIVERSAL MOUNTING ADAPTER

DESCRIPTION:

Orbit's latest innovation, the Simple Support Bracket, SSB, works alongside Orbit's Universal Mounting Adapter, UMA, and Stud Mounting Adjustable Ring Series, WBAR1G and 2G to form a versatile Stud Bracket System. This system provides the installer with a solution for mounting boxes and devices between studs.

CERTIFICATION:

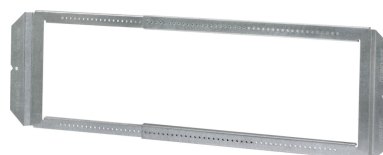
UL file E310661, conforms to UL514A

FEATURES:

- Telescoping bracket adjusts from 15" to 25"
- SSB can be preassembled to save time and reduce injury on the job site
- UMA can either mount-to-stud directly or clip onto bracket
- Rigidity eliminates need for far-side back support
- Markings on Bracket allow for quick and consistent adjustability



SSB-4S



SSB



UMA



CONFIGURATION DATA:

Part No.	Description	Sides K.O.	Bottom K.O.	Std.Pkg.
SSB	Simple Support Bracket adjusts from 15" to 25" for mounting boxes horizontally between stud	-	-	25
SSB-4S	Preassembled SSB with UMA and 4" (4S) 2-1/8" Deep Box with 10" Ground Pigtail	(8) - 1/2", (4) - 3/4"	(2) - 1/2", (2) - 3/4"	12
SSB-4S-MKO	Preassembled SSB with UMA and 4" (4S) 2-1/8" Deep Box with 10" Ground Pigtail	(8) - 1/2", (4) - MKO	(2) - 1/2", (2) - MKO	12
SSB-5S-MKO	Preassembled SSB with UMA and 4-11/16" (5S) 2-1/8" Deep Box with MKO and 10" Ground Pigtail	(2) - 1/2", (10) - MKO	(2) - 1/2", (2) - MKO	12
UMA	Universal Mounting Adapter for mounting 4S and 5S boxes to SSB, USB, and directly to stud	-	-	25

*SSB must be accompanied with either UMA, WBAR1G or WBAR2G mounting brackets to attach a steel box



SSB



SSB-4S
SSB-4S-MKO



SSB-5S-MKO



UMA

