

# SSA SERIES

## DIGITAL AUTO OFF IN-WALL TIME SWITCH



### APPLICATIONS



- Offices, meeting rooms, library aisles
- Stock and equipment rooms
- Exhaust fans – work areas, utility rooms, bathrooms
- Hot tub heaters and circulating pumps
- Timed override lighting and HVAC for after hours and for loads controlled by electromechanical or digital time switches.

### FEATURES

**8-IN-1 TIMING:** Choose from 8 preset ON intervals.

**MANUAL SCROLL-UP:** Option allows adjustment in 10 minute intervals.

**FLASH WARNING:** Optional flicker feature turns load off for 1 second, 2 minutes before end of timed cycle and again 1 minute before end of timed cycle.

**AUDIBLE WARNING:** Optional beep will sound every 12 seconds during the last 2 minutes of timed cycle.

**TAMPER RESISTANT:** Time ON interval preset hidden behind wall plate.

**EASY SET:** Dip switches provide quick set-up of timing and options.

**EASY WIRING:** No neutral needed, great for retrofit.

**BACKLIT DISPLAY:** Numerical read-out of time remaining includes graphic bar showing time remaining in 10% increments. Stands out strongly in lighted and dark areas.

**WALL PLATE:** Supplied with white standard single gang decorator wall plate.

**SSA-R24:** Offers low voltage control with SPDT output and includes momentary input.

### SPECIFICATIONS

**TIMING ACCURACY:** .002%.

**INPUT VOLTAGE:**  
120/277 VAC, 50/60Hz.

**WIRE SIZE:** #18AWG.

**OPERATING TEMPERATURE:**  
0°F to +100°F (-17°C to +37°C).

### ORDERING INFO

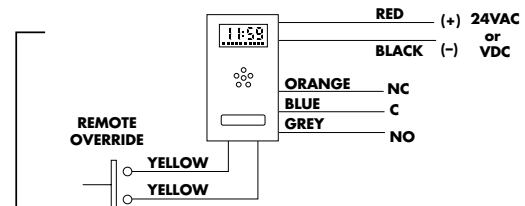
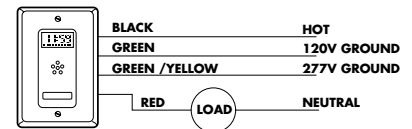
| CATALOG NO. | UPC CODE | INPUT SUPPLY | TIME SETTINGS                                | OUTPUT CONTACTS |
|-------------|----------|--------------|----------------------------------------------|-----------------|
| SSA100      | 14010    | 120/277 VAC  | Minutes: 5, 15, 30<br>Hours: 1, 3, 6, 9, 12  | SPST            |
| SSA200      | 14011    | 120/277 VAC  | Minutes: 10, 20, 40<br>Hours: 1, 1½, 2, 4, 8 | SPST            |
| SSA100R-24  | 14014    | 24VAC/24VDC  | Minutes: 5, 15, 30<br>Hours: 1, 3, 6, 9, 12  | SPDT            |
| SSA200R-24  | 14015    | 24VAC/24VDC  | Minutes: 10, 20, 40<br>Hours: 1, 1½, 2, 4, 8 | SPDT            |
| LCS115M     | 82082    |              | Momentary Switch for Override (white)        | SPST            |

### CONTACT RATINGS

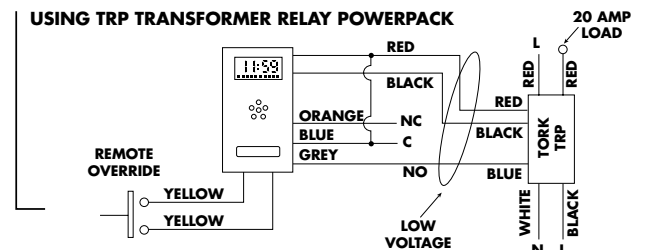
|                | TYPE       | VOLTAGE | RATING |
|----------------|------------|---------|--------|
| SSA100/200     | Tungsten   | 120VAC  | 800W   |
|                | Ballast    | 120VAC  | 800W   |
|                |            | 277VAC  | 1200W  |
|                | Motor      | 120VAC  | 1/8HP  |
| SSA100/200R-24 | Pilot Duty | 120VAC  | 240VA  |
|                | 30V        | 30V     | 1A     |
|                | 1V min.    | 1V min. | 100µA  |

### WIRING DIAGRAMS

#### SSA100/200



#### SSA200R-24



# SSA SERIES

## DIGITAL AUTO OFF IN-WALL TIME SWITCH



### APPLICATIONS



- Offices, meeting rooms, library aisles
- Stock and equipment rooms
- Exhaust fans – work areas, utility rooms, bathrooms
- Hot tub heaters and circulating pumps
- Timed override lighting and HVAC for after hours and for loads controlled by electromechanical or digital time switches.

### FEATURES

**8-IN-1 TIMING:** Choose from 8 preset ON intervals.

**MANUAL SCROLL-UP:** Option allows adjustment in 10 minute intervals.

**FLASH WARNING:** Optional flicker feature turns load off for 1 second, 2 minutes before end of timed cycle and again 1 minute before end of timed cycle.

**AUDIBLE WARNING:** Optional beep will sound every 12 seconds during the last 2 minutes of timed cycle.

**TAMPER RESISTANT:** Time ON interval preset hidden behind wall plate.

**EASY SET:** Dip switches provide quick set-up of timing and options.

**EASY WIRING:** No neutral needed, great for retrofit.

**BACKLIT DISPLAY:** Numerical read-out of time remaining includes graphic bar showing time remaining in 10% increments. Stands out strongly in lighted and dark areas.

**WALL PLATE:** Supplied with white standard single gang decorator wall plate.

**SSA-R24:** Offers low voltage control with SPDT output and includes momentary input.

### SPECIFICATIONS

**TIMING ACCURACY:** .002%.

**INPUT VOLTAGE:**  
120/277 VAC, 50/60Hz.

**WIRE SIZE:** #18AWG.

**OPERATING TEMPERATURE:**  
0°F to +100°F (-17°C to +37°C).

### ORDERING INFO

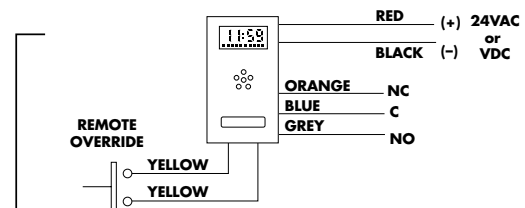
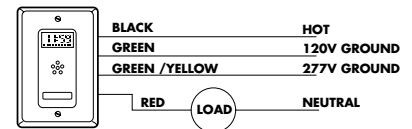
| CATALOG NO. | UPC CODE | INPUT SUPPLY | TIME SETTINGS                                | OUTPUT CONTACTS |
|-------------|----------|--------------|----------------------------------------------|-----------------|
| SSA100      | 14010    | 120/277 VAC  | Minutes: 5, 15, 30<br>Hours: 1, 3, 6, 9, 12  | SPST            |
| SSA200      | 14011    | 120/277 VAC  | Minutes: 10, 20, 40<br>Hours: 1, 1½, 2, 4, 8 | SPST            |
| SSA100R-24  | 14014    | 24VAC/24VDC  | Minutes: 5, 15, 30<br>Hours: 1, 3, 6, 9, 12  | SPDT            |
| SSA200R-24  | 14015    | 24VAC/24VDC  | Minutes: 10, 20, 40<br>Hours: 1, 1½, 2, 4, 8 | SPDT            |
| LCS115M     | 82082    |              | Momentary Switch for Override (white)        | SPST            |

### CONTACT RATINGS

|                | TYPE       | VOLTAGE | RATING |
|----------------|------------|---------|--------|
| SSA100/200     | Tungsten   | 120VAC  | 800W   |
|                | Ballast    | 120VAC  | 800W   |
|                |            | 277VAC  | 1200W  |
|                | Motor      | 120VAC  | 1/8HP  |
| SSA100/200R-24 | Pilot Duty | 120VAC  | 240VA  |
|                | 30V        | 30V     | 1A     |
|                | 1V min.    | 1V min. | 100µA  |

### WIRING DIAGRAMS

#### SSA100/200



#### SSA200R-24

