

DESCRIPTION

The Halo Surface LED Downlight (SLD) incorporates WaveStream™ technology to create an ultra-low profile surface mounting luminaire with the performance and look of a traditional downlight. SLD series is designed for installation in standard and fire-rated 3-1/2" and 4" square, octagon or round junction boxes. SLD series may also retrofit in 4", 5", or 6" IC and Non-IC recessed housings*. Suitable for residential or commercial installations. Ideal for closets, storage areas, attics and basements. Compliant with NFPA® 70, NEC® Section 410.16 (A)(3) and 410.16 (C)(5).

Catalog #		Type
Project		
Comments		Date
Prepared by		

SPECIFICATION FEATURES

SLD accessories are specially designed to offer additional finish options and expand the mounting capabilities of SLD series.

Designer Trim Rings

SLD trims provide the ultimate in design freedom to match décor and interior fittings in a space with an offering of Satin Nickel and Tuscan Bronze plated trims, plus a White trim that may be field painted prior to installation to an alternate color choice.

SLD4 Designer Trims



SLD4TRMSN
4" Satin Nickel



SLD4TRMTBZ
4" Tuscan Bronze



SLD4TRMWH
4" White (Paintable)

SLD6 Designer Trims



SLD6TRMSN
6" Satin Nickel



SLD6TRMTBZ
6" Tuscan Bronze



SLD6TRMWH
6" White (Paintable)



The versatile SLD trims are optional accessories that snap over the SLD. Note that use of the pre-installed thin film tape on the back side of the trim is required to secure the trim and prevent rotation when installing the SLD unit.

Spacer Extension Ring

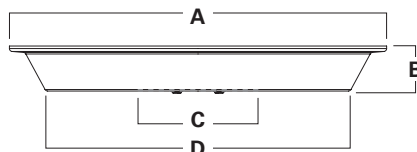
The spacer extension ring adds 15/16" depth when the SLD driver cannot fit into a junction box due to excess wire fill or other obstruction. The spacer extension ring is also a problem solver for installations with shallow pancake boxes or plaster rings.



SLD4EXT
4" Surface LED J-box Extender

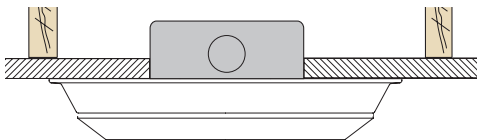


SLD6EXT
6" Surface LED J-box Extender

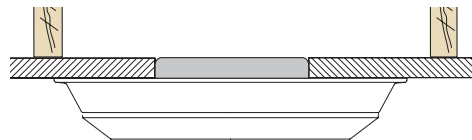


	A	B	C	D
SLD4EXT	7.75"	0.925"	3.88"	6.25"
SLD6EXT	9.5"	0.925"	3.88"	8"

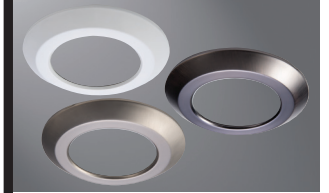
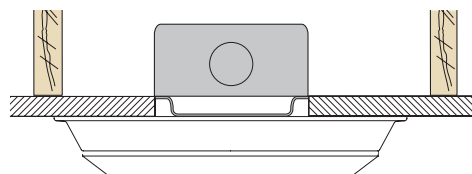
Standard J-box



Shallow J-box (pancake)



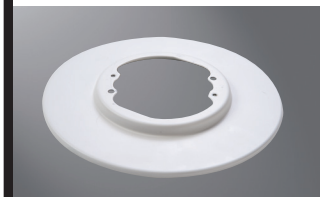
Standard J-box with plaster ring



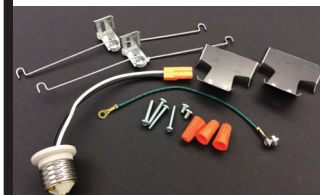
**SLD4 & SLD6
Designer Trims**



**SLD4 & SLD6
Spacer Extension
Rings**



**SLD4 & SLD6
Surface Box
Adapters**



**Replacement Parts
Kits**

**SLD Series
Accessories**

Surface Box Adapter

The surface box adapter allows the user to install the SLD to a 4-inch round or octagon junction box that is mounted flat on a ceiling or beam surface (not recessed in the ceiling).

For installation of SLD6 in 4-inch square junction boxes use SLD6RAD with the SLD6SADPLT square adapter plate.



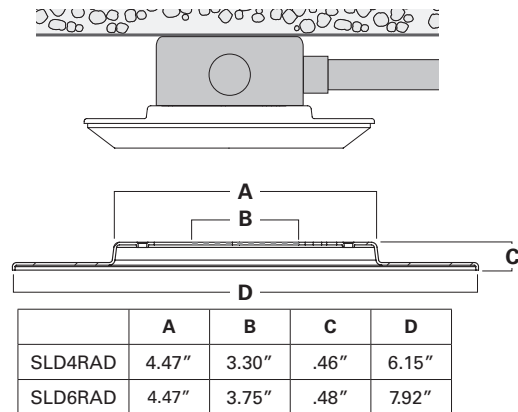
SLD4RAD
4" SLD Round Surface J-box Adapter



SLD6RAD
6" SLD Round Surface J-box Adapter (*use SLD6SADPLT for square J-box)



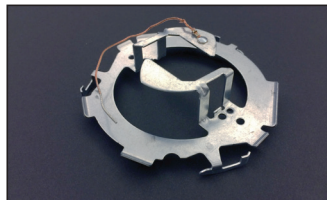
***SLD6SADPLT**
6" SLD Square Surface J-box Adapter Plate (use with SLD6RAD)



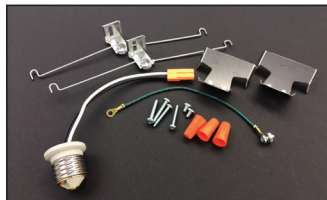
Replacement Parts Kits



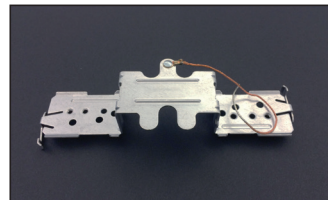
SLD4ACCKIT
SLD4 Retrofit Kit
SLD4 screwbase adapter, friction blades, ground wire, mounting screws, wire nuts



SLD4BRKT
SLD4 Junction Box Mounting Bracket and screws



SLD6ACCKIT
SLD6 Retrofit Kit
SLD6 screwbase adapter, friction blades, torsion springs, ground wire, mounting screws, wire nuts



SLD6BRKT
SLD6 Junction Box Mounting Bracket and screws

Junction Box	Junction Box Type/Dimensions	SLD4 4-Inch	SLD6 6-Inch	SLD4RAD Surface Box Adapter (order SLD4 separately)	SLD6RAD Surface Box Adapter (order SLD6 separately)
	Octagon – Steel Light Fixture / Fan Box 4" x 4" x 2-1/8" 4" x 4" x 1-1/2"	YES	YES	YES	YES (1-1/2" deep box - best with low profile conduit connector)
	Square – Steel Deep Box 4" x 4" x 2-1/8" 4" x 4" x 1-1/2"	N/A Box corners larger than SLD4	YES	NO	YES w/ Adapter Plate Included in SLD6RAD Kit
	Round – New Work Fixture Box (plastic) 4" diameter x 2-3/16"	YES	YES	YES	YES (4" DIA)
	3-1/2" diameter x 2-3/4"				NO (3-1/2" DIA)
	Round – Old Work Fixture Box (plastic) 4-1/4" diameter flange (3-1/2" I.D.)x 2-5/8"	YES	YES	YES	NO
	Round – New Work Fixture Box (plastic) w/ Bar Hanger 4" diameter x 2-3/16"	YES	YES	YES	YES
	Round surface mount 4" diameter x 1-1/2"	YES with SLD4RAD	YES with SLD6RAD	YES	YES

DESCRIPTION

The Halo Surface LED Downlight (SLD) incorporates WaveStream™ technology to create an ultra-low profile surface mounting luminaire with the performance and look of a traditional downlight. SLD series is designed for installation in standard and fire-rated 3-1/2" and 4" square, octagon or round junction boxes. SLD series may also retrofit in 4", 5", or 6" IC and Non-IC recessed housings*. Suitable for residential or commercial installations. Ideal for closets, storage areas, attics and basements. Compliant with NFPA® 70, NEC® Section 410.16 (A)(3) and 410.16 (C)(5).

Catalog #		Type
Project		
Comments		Date
Prepared by		

SPECIFICATION FEATURES

SLD accessories are specially designed to offer additional finish options and expand the mounting capabilities of SLD series.

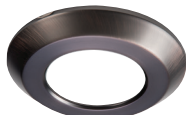
Designer Trim Rings

SLD trims provide the ultimate in design freedom to match décor and interior fittings in a space with an offering of Satin Nickel and Tuscan Bronze plated trims, plus a White trim that may be field painted prior to installation to an alternate color choice.

SLD4 Designer Trims



SLD4TRMSN
4" Satin Nickel



SLD4TRMTBZ
4" Tuscan Bronze



SLD4TRMWH
4" White (Paintable)

SLD6 Designer Trims



SLD6TRMSN
6" Satin Nickel



SLD6TRMTBZ
6" Tuscan Bronze



SLD6TRMWH
6" White (Paintable)



The versatile SLD trims are optional accessories that snap over the SLD. Note that use of the pre-installed thin film tape on the back side of the trim is required to secure the trim and prevent rotation when installing the SLD unit.

Spacer Extension Ring

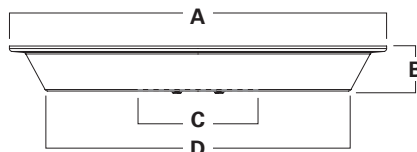
The spacer extension ring adds 15/16" depth when the SLD driver cannot fit into a junction box due to excess wire fill or other obstruction. The spacer extension ring is also a problem solver for installations with shallow pancake boxes or plaster rings.



SLD4EXT
4" Surface LED J-box Extender

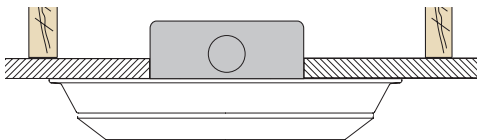


SLD6EXT
6" Surface LED J-box Extender

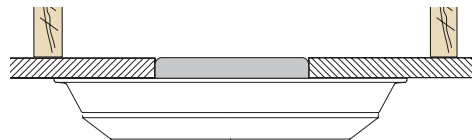


	A	B	C	D
SLD4EXT	7.75"	0.925"	3.88"	6.25"
SLD6EXT	9.5"	0.925"	3.88"	8"

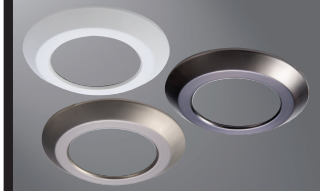
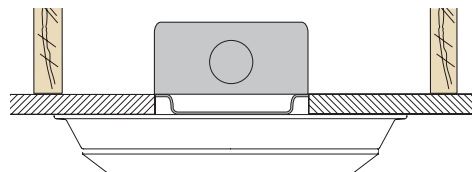
Standard J-box



Shallow J-box (pancake)



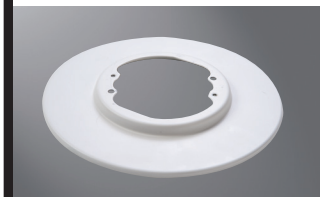
Standard J-box with plaster ring



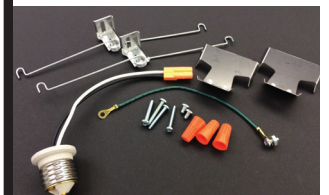
**SLD4 & SLD6
Designer Trims**



**SLD4 & SLD6
Spacer Extension
Rings**



**SLD4 & SLD6
Surface Box
Adapters**



**Replacement Parts
Kits**

**SLD Series
Accessories**

Surface Box Adapter

The surface box adapter allows the user to install the SLD to a 4-inch round or octagon junction box that is mounted flat on a ceiling or beam surface (not recessed in the ceiling).

For installation of SLD6 in 4-inch square junction boxes use SLD6RAD with the SLD6SADPLT square adapter plate.



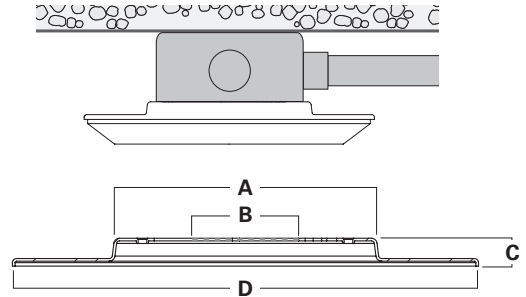
SLD4RAD
4" SLD Round Surface J-box Adapter



SLD6RAD
6" SLD Round Surface J-box Adapter (*use SLD6SADPLT for square J-box)



***SLD6SADPLT**
6" SLD Square Surface J-box Adapter Plate (use with SLD6RAD)

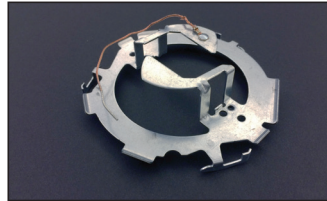


	A	B	C	D
SLD4RAD	4.47"	3.30"	.46"	6.15"
SLD6RAD	4.47"	3.75"	.48"	7.92"

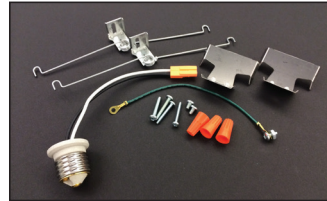
Replacement Parts Kits



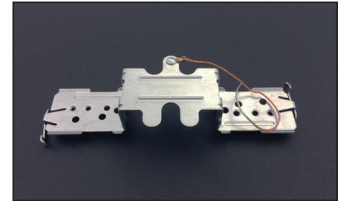
SLD4ACCKIT
SLD4 Retrofit Kit
SLD4 screwbase adapter, friction blades, ground wire, mounting screws, wire nuts



SLD4BRKT
SLD4 Junction Box Mounting Bracket and screws



SLD6ACCKIT
SLD6 Retrofit Kit
SLD6 screwbase adapter, friction blades, torsion springs, ground wire, mounting screws, wire nuts



SLD6BRKT
SLD6 Junction Box Mounting Bracket and screws

Junction Box	Junction Box Type/Dimensions	SLD4 4-Inch	SLD6 6-Inch	SLD4RAD Surface Box Adapter (order SLD4 separately)	SLD6RAD Surface Box Adapter (order SLD6 separately)
	Octagon – Steel Light Fixture / Fan Box 4" x 4" x 2-1/8" 4" x 4" x 1-1/2"	YES	YES	YES	YES (1-1/2" deep box - best with low profile conduit connector)
	Square – Steel Deep Box 4" x 4" x 2-1/8" 4" x 4" x 1-1/2"	N/A Box corners larger than SLD4	YES	NO	YES w/ Adapter Plate Included in SLD6RAD Kit
	Round – New Work Fixture Box (plastic) 4" diameter x 2-3/16"	YES	YES	YES	YES (4" DIA)
	3-1/2" diameter x 2-3/4"				NO (3-1/2" DIA)
	Round – Old Work Fixture Box (plastic) 4-1/4" diameter flange (3-1/2" I.D.) x 2-5/8"	YES	YES	YES	NO
	Round – New Work Fixture Box (plastic) w/ Bar Hanger 4" diameter x 2-3/16"	YES	YES	YES	YES
	Round surface mount 4" diameter x 1-1/2"	YES with SLD4RAD	YES with SLD6RAD	YES	YES