

Spec 5™ Malleable Iron Conduit Bodies

For Rigid Conduit & IMC

Types LB, T, LB-G & T-G

Use:

To provide access to conductors for pulling, splicing, maintenance and future changes/upgrades. Allows connection of straight conduit runs, branch conduit runs and 90° bends.


Features:


- Tapered threaded hubs (NPT).
- Raintight when used with gasketed covers.
- Malleable iron suitable for use in concrete.
- For covers and gaskets, see Pages AB4 and AB5.
- Complete interchangeability with other manufacturers' style "5" or "35" Conduit Bodies.
- Internal volume and maximum wire clearly marked on castings.

Material/Finish:

Malleable Iron/
Zinc Electroplated Aluminum Enamel
Catalog number with suffix "G"
Malleable Iron with Hot Dip Galvanize

Third Party Certification:

 UL Listed E-18095
Suitable for wet locations when used with gasketed covers.

 CSA Certified: 009795
Suitable for wet locations when used with gasketed covers.

Applicable Third Party Standards:

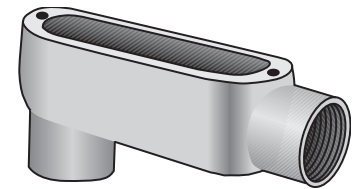
UL Standard: 514A
CSA Standard: C22.2 No. 18
Fed Spec: A-A-50563
NEMA: FB-1, FB-2.10

Dimensional Data:

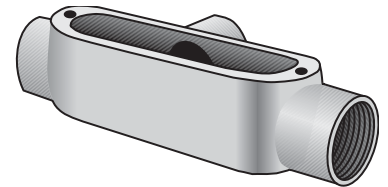
See Pages AB6 - AB8

Note: Conduit bodies are suitable for use in Class I, Div. 2 hazardous locations per NEC Section 501-4(B).

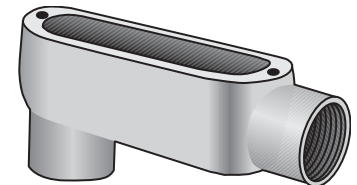
| Trade Size (inches) | Catalog Number Malleable Iron Zinc Plated |
|---------------------|---|
| 1/2 | LB-50 |
| 3/4 | LB-75 |
| 1 | LB-100 |
| 1 1/4 | LB-125 |
| 1 1/2 | LB-150 |
| 2 | LB-200 |
| 2 1/2 | LB-250 |
| 3 | LB-300 |
| 3 1/2 | LB-350 |
| 4 | LB-400 |
| 1/2 | T-50 |
| 3/4 | T-75 |
| 1 | T-100 |
| 1 1/4 | T-125 |
| 1 1/2 | T-150 |
| 2 | T-200 |
| 2 1/2 | T-250 |
| 3 | T-300 |
| 3 1/2 | T-350 |
| 4 | T-400 |



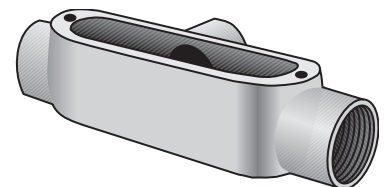
Type LB



Type T



Type LB-G
Hot Dip Galvanized



Type T-G
Hot Dip Galvanized

| Trade Size (inches) | Catalog Number Malleable Iron Hot Dip Galvanized |
|---------------------|--|
| 1/2 | LB-50G |
| 3/4 | LB-75G |
| 1 | LB-100G |
| 1 1/4 | LB-125G |
| 1 1/2 | LB-150G |
| 2 | LB-200G |
| 2 1/2 | LB-250G |
| 3 | LB-300G |
| 3 1/2 | LB-350G |
| 4 | LB-400G |
| 1/2 | T-50G |
| 3/4 | T-75G |
| 1 | T-100G |
| 1 1/4 | T-125G |
| 1 1/2 | T-150G |
| 2 | T-200G |
| 2 1/2 | T-250G |
| 3 | T-300G |
| 3 1/2 | T-350G |
| 4 | T-400G |

Spec 5™ Malleable Iron Conduit Bodies

For Rigid Conduit & IMC

Types LL, LR, TB, X, C

Use:

To provide access to conductors for pulling, splicing, maintenance and future changes/upgrades. Allows connection of straight conduit runs, branch conduit runs and 90° bends.

Features:

- Tapered threaded hubs (NPT).
- Raintight when used with gasketed covers.
- Malleable iron suitable for use in concrete.
- For covers and gaskets, see Pages AB4 and AB5.
- Complete interchangeability with other manufacturers' style "5" or "35" Conduit Bodies.
- Internal volume and maximum wire clearly marked on castings.

Material/Finish:

Malleable Iron/
Zinc Electroplated Aluminum Enamel

Optional Finish:

For additional corrosion protection, specify Hot Dip Galvanized. Add suffix "G" to standard catalog number. Contact your local representative for pricing and availability.

Third Party Certification:



UL Listed E-18095
Suitable for wet locations when used with gasketed covers.



CSA Certified: LR-9795
Suitable for wet locations when used with gasketed covers.

Applicable Third Party Standards:

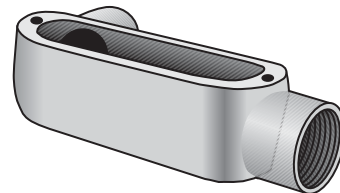
UL Standard: 514A
CSA Standard: C22.2 No. 18
Fed Spec: A-A-50563
NEMA: FB-1, FB-2.10

Dimensional Data:

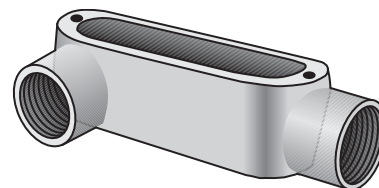
See Pages AB6 - AB8

Note: Conduit bodies are suitable for use in Class I, Div. 2 hazardous locations per NEC Section 501-4(B).

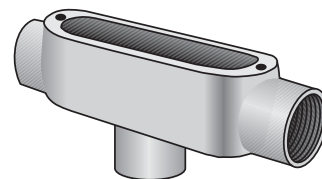
| Trade Size (inches) | Catalog Number Malleable Iron Zinc Plated |
|---------------------|---|
| 1/2 | LL-50 |
| 3/4 | LL-75 |
| 1 | LL-100 |
| 1 1/4 | LL-125 |
| 1 1/2 | LL-150 |
| 2 | LL-200 |
| 2 1/2 | LL-250 |
| 3 | LL-300 |
| 3 1/2 | LL-350 |
| 4 | LL-400 |
| 1/2 | LR-50 |
| 3/4 | LR-75 |
| 1 | LR-100 |
| 1 1/4 | LR-125 |
| 1 1/2 | LR-150 |
| 2 | LR-200 |
| 2 1/2 | LR-250 |
| 3 | LR-300 |
| 3 1/2 | LR-350 |
| 4 | LR-400 |
| 1/2 | TB-50 |
| 3/4 | TB-75 |
| 1 | TB-100 |
| 1 1/4 | TB-125 |
| 1 1/2 | TB-150 |
| 2 | TB-200 |
| 1/2 | X-50 |
| 3/4 | X-75 |
| 1 | X-100 |
| 1 1/4 | X-125 |
| 1 1/2 | X-150 |
| 2 | X-200 |
| 1/2 | C-50 |
| 3/4 | C-75 |
| 1 | C-100 |
| 1 1/4 | C-125 |
| 1 1/2 | C-150 |
| 2 | C-200 |
| 2 1/2 | C-250 |
| 3 | C-300 |
| 3 1/2 | C-350 |
| 4 | C-400 |



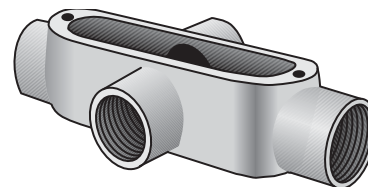
Type LL



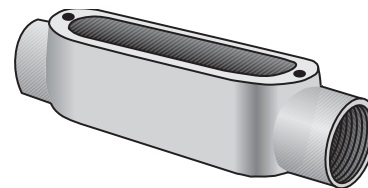
Type LR



Type TB



Type X



Type C

Spec 5™ Conduit Body, Cover & Gasket Assemblies

For Rigid Conduit & IMC

Types LB, LL, LR, C, T

Use:

To provide access to conductors for pulling, splicing, maintenance and future changes/upgrades. Allows connection of straight conduit runs, branch conduit runs and 90° bends.

Features:

- Tapered threaded hubs (NPT)
- Packaged complete under one Catalog Number
- Ready to use

Material/Finish:

Conduit body - Malleable Iron
Zinc Electroplated with Aluminum Enamel
Cover - Type BS Steel Zinc Electroplated
Gasket - Type SGN Neoprene

Third Party Certification:



UL Listed:
E-18095
Suitable for wet locations



CSA Certified:
LR-9795
Suitable for wet locations.

Applicable Third Party Standards:

UL Standard: 514A
CSA Standard: C22.2 No. 18
Fed Spec: A-A-50563
NEMA: FB-1, FB-2.10

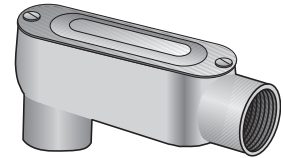
Dimensional Data:

See Pages AB6 - AB8.

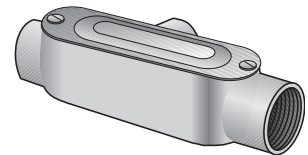
Note: For additional information, please refer to:

- Conduit Bodies on pages AB1 and AB2.
- Covers and Gaskets on page AB4.

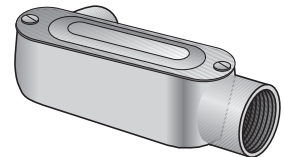
| Trade Size (inches) | Catalog Number |
|------------------------|-------------------|
| ½ | LB-50CG |
| ¾ | LB-75CG |
| 1 | LB-100CG |
| 1¼ | LB-125CG |
| 1½ | LB-150CG |
| 2 | LB-200CG |
| ½ | T-50CG |
| ¾ | T-75CG |
| 1 | T-100CG |
| 1¼ | T-125CG |
| 1½ | T-150CG |
| 2 | T-200CG |
| ½ | LL-50CG |
| ¾ | LL-75CG |
| 1 | LL-100CG |
| 1¼ | LL-125CG |
| 1½ | LL-150CG |
| 2 | LL-200CG |
| ½ | LR-50CG |
| ¾ | LR-75CG |
| 1 | LR-100CG |
| 1¼ | LR-125CG |
| 1½ | LR-150CG |
| 2 | LR-200CG |
| ½ | C-50CG |
| ¾ | C-75CG |
| 1 | C-100CG |
| 1¼ | C-125CG |
| 1½ | C-150CG |
| 2 | C-200CG |



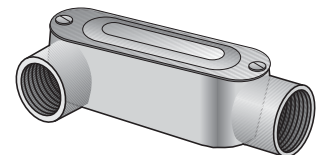
Type LB-CG



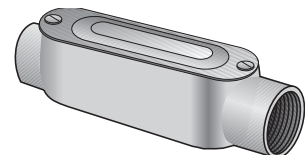
Type T-CG



Type LL-CG



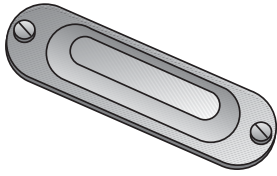
Type LR-CG



Type C-CG

Spec 5™ Covers & Gaskets

For O-Z/Gedney Malleable Iron Conduit Bodies



Type BS-S

Type BS-S Domed Top Design Cover

Use:
To cover conduit body opening.

Material/Finish:
Stamped Steel Pre-Galvanized
Stainless Steel Screws
Natural Finish

Third Party Certification:
 UL Listed:
E-18095
Suitable for wet locations when used with gaskets, Type SGN or SG on malleable iron conduit bodies.

 CSA Certified:
LR-9795
Suitable for wet locations when used with gaskets, Type SGN or SG on malleable iron conduit bodies.

Applicable Third Party Standards:
 UL Standard: 514A
 CSA Standard: C22.2 No. 18
 Fed Spec: A-A-50563
 NEMA: FB-1, FB-2.10



Type BC-G

Type BC-G Flat Top Design Cover

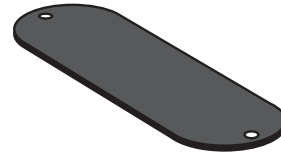
Use:
To cover conduit body opening.

Material/Finish:
Gray Iron/Hot Dip Galvanized stainless steel screws.

Third Party Certification:
 UL Listed:
E-18095
Suitable for wet locations when used with gaskets, Type SG on malleable iron conduit bodies.

 CSA Certified:
LR-9795
Suitable for wet locations when used with gaskets, Type SG on malleable iron conduit bodies.

Applicable Third Party Standards:
 UL Standard: 514A
 CSA Standard: C22.2 No. 18
 Fed Spec: A-A-50563
 NEMA: FB-1, FB-2.10



Type SG & SGN

Type SG & SGN Solid Cover Sealing Gasket

Use:
To provide a worry-free, raintight seal when used with Type BS or BC covers.

Material:
Velbuna Composition
Closed-Cell Neoprene Foam Gasket
Temperature Rating: 212°F/100°C

Note: UL/CSA not applicable.

| Trade Size (inches) | Catalog Number |
|---------------------|----------------|
| 1/2 | BS-50S |
| 3/4 | BS-75S |
| 1 | BS-100S |
| 1 1/4-1 1/2 | BS-125S |
| 2 | BS-200S |
| 2 1/2-3 | BS-250S |
| 3 1/2-4 | BS-350S* |

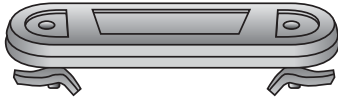
| Trade Size (inches) | Catalog Number |
|---------------------|----------------|
| 1/2 | BC-50G |
| 3/4 | BC-75G |
| 1 | BC-100G |
| 1 1/4-1 1/2 | BC-125G |
| 2 | BC-200G |
| 2 1/2-3 | BC-250G |
| 3 1/2-4 | BC-350G |

| Trade Size (inches) | Catalog Number Velbuna | Catalog Number Neoprene |
|---------------------|------------------------|-------------------------|
| 1/2 | SG-50 | SGN-50 |
| 3/4 | SG-75 | SGN-75 |
| 1 | SG-100 | SGN-100 |
| 1 1/4-1 1/2 | SG-125 | SGN-125 |
| 2 | SG-200 | SGN-200 |
| 2 1/2-3 | SG-250 | SGN-250 |
| 3 1/2-4 | SG-350 | SGN-350 |

* Flat Top Design Cover

Spec 5™ Covers & Gaskets

For O-Z/Gedney Malleable Iron Conduit Bodies



Type BCC

Type BCC Clip-On™ Cover

Use:

To cover conduit body opening.

Material/Finish:

Gray Iron/Zinc Electroplated
Stainless Steel Screws
Steel, Zinc-Plated Clips

Third Party Certification:



UL Listed:
E-18095

Suitable for wet locations when
used with gaskets, Type SGNC on
malleable iron conduit bodies.



CSA Certified:
009795

Suitable for wet locations when
used with gaskets, Type SGNC on
malleable iron conduit bodies.

Applicable Third Party Standards:

UL Standard: 514A
CSA Standard: C22.2 No. 18
Fed Spec: A-A-50563
NEMA: FB-1, FB-2.10



Type SGNC

Type SGNC Cover Gasket

Use:

To provide a worry-free, raintight seal when
used with Clip-On™ Type BCC cover.

Material:

Closed-Cell Neoprene Foam Gasket
Temperature Rating: 212°F/100°C

Note: UL/CSA not applicable.

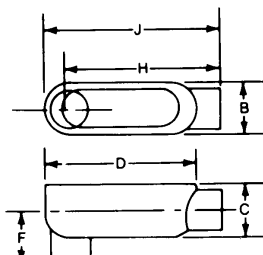
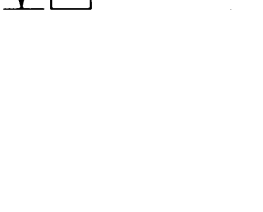
| Trade Size (inches) | Catalog Number |
|------------------------|-------------------|
| ½ | BCC-50 |
| ¾ | BCC-75 |
| 1 | BCC-100 |
| 1¼-1½ | BCC-125 |
| 2 | BCC-200 |
| 2½-3 | BCC-250 |
| 3½-4 | BCC-350 |

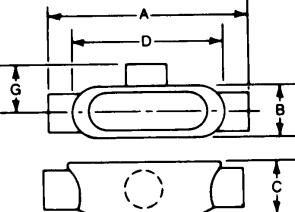

| Trade Size (inches) | Catalog Number |
|------------------------|-------------------|
| ½ | SGNC-50 |
| ¾ | SGNC-75 |
| 1 | SGNC-100 |
| 1¼-1½ | SGNC-125 |
| 2 | SGNC-200 |
| 2½-3 | SGNC-250 |
| 3½-4 | SGNC-350 |

Spec 5™ Malleable Iron Conduit Bodies

For Rigid Conduit & IMC

Dimensional Data:

| Type LB | Catalog Number | Trade Size | Dimensions in Inches | | | | | | Volume Cu. In. | Max No. Conductors |
|---|----------------|------------|----------------------|-------|--------|-------|--------|--------|----------------|--------------------|
| | | | B | C | D | F | H | J | | |
|  | LB-50 | 1/2 | 1 1/8 | 1 1/8 | 4 | 1 1/2 | 4 | 4 5/8 | 4.0 | N/A |
| | LB-75 | 3/4 | 1 1/8 | 1 1/8 | 4 5/8 | 1 1/8 | 4 5/8 | 5 1/8 | 7.0 | 3 #6AWG |
| | LB-100 | 1 | 1 1/8 | 2 | 5 3/8 | 1 1/8 | 5 3/8 | 6 1/4 | 12.0 | 3 #4AWG |
| | LB-125 | 1 1/4 | 2 1/8 | 2 1/8 | 7 1/4 | 2 1/4 | 7 | 8 1/4 | 32.0 | 3 #2AWG |
| | LB-150 | 1 1/2 | 2 1/8 | 2 3/4 | 7 3/8 | 2 3/8 | 7 | 8 1/4 | 36.0 | 3 #1/0AWG |
| | LB-200 | 2 | 3 1/4 | 3 3/8 | 9 3/8 | 2 3/4 | 9 3/8 | 10 3/8 | 70.0 | 3 #4/0AWG |
| | LB-250 | 2 1/2 | 4 3/8 | 4 | 12 3/8 | 3 3/8 | 11 3/8 | 13 3/4 | 142.0 | 3 #300MCM |
| | LB-300 | 3 | 4 3/8 | 4 3/4 | 12 3/8 | 3 3/8 | 11 3/8 | 13 3/4 | 173.0 | 3 #400MCM |
| | LB-350 | 3 1/2 | 5 1/8 | 5 1/2 | 15 | 4 1/4 | 14 | 16 3/4 | 292.0 | 3 #500MCM |
| | LB-400 | 4 | 5 1/8 | 5 1/8 | 15 | 4 1/4 | 14 | 16 3/4 | 324.0 | 3 #500MCM |
|  | LB-50G | 1/2 | 1 1/8 | 1 1/8 | 4 | 1 1/2 | 4 | 4 5/8 | 4.0 | N/A |
| | LB-75G | 3/4 | 1 1/8 | 1 1/8 | 4 5/8 | 1 1/8 | 4 5/8 | 5 1/8 | 7.0 | 3 #6AWG |
| | LB-100G | 1 | 1 1/8 | 2 | 5 3/8 | 1 1/8 | 5 3/8 | 6 1/4 | 12.0 | 3 #4AWG |
| | LB-125G | 1 1/4 | 2 1/8 | 2 1/8 | 7 1/4 | 2 1/4 | 7 | 8 1/4 | 32.0 | 3 #2AWG |
| | LB-150G | 1 1/2 | 2 1/8 | 2 3/4 | 7 3/8 | 2 3/8 | 7 | 8 1/4 | 36.0 | 3 #1/0AWG |
| | LB-200G | 2 | 3 1/4 | 3 3/8 | 9 3/8 | 2 3/4 | 9 3/8 | 10 3/8 | 70.0 | 3 #4/0AWG |
| | LB-250G | 2 1/2 | 4 3/8 | 4 | 12 3/8 | 3 3/8 | 11 3/8 | 13 3/4 | 142.0 | 3 #300MCM |
| | LB-300G | 3 | 4 3/8 | 4 3/4 | 12 3/8 | 3 3/8 | 11 3/8 | 13 3/4 | 173.0 | 3 #400MCM |
| | LB-350G | 3 1/2 | 5 1/8 | 5 1/2 | 15 | 4 1/4 | 13 3/8 | 16 3/4 | 292.0 | 3 #500MCM |
| | LB-400G | 4 | 5 1/8 | 5 1/8 | 15 | 4 1/4 | 14 | 16 3/4 | 324.0 | 3 #500MCM |

| Type T | Catalog Number | Trade Size | Dimensions in Inches | | | | | Volume Cu. In. | Max No. Conductors |
|---|----------------|------------|----------------------|-------|-------|--------|-------|----------------|--------------------|
| | | | A | B | C | D | G | | |
|  | T-50 | 1/2 | 5 3/8 | 1 1/8 | 1 1/8 | 4 | 1 1/8 | 4.0 | N/A |
| | T-75 | 3/4 | 6 1/8 | 1 1/8 | 1 1/8 | 4 5/8 | 1 1/8 | 7.0 | 3 #6AWG |
| | T-100 | 1 | 7 1/8 | 1 1/8 | 2 | 5 3/8 | 1 3/4 | 12.0 | 3 #4AWG |
| | T-125 | 1 1/4 | 9 1/8 | 2 3/8 | 2 3/8 | 7 1/4 | 2 1/4 | 32.0 | 3 #2AWG |
| | T-150 | 1 1/2 | 9 1/4 | 2 3/8 | 2 3/4 | 7 1/4 | 2 1/4 | 36.0 | 3 #1AWG |
| | T-200 | 2 | 11 1/8 | 3 1/4 | 3 1/2 | 9 3/8 | 2 3/8 | 70.0 | 3 #2/0AWG |
| | T-250 | 2 1/2 | 15 3/8 | 4 3/8 | 4 | 12 3/8 | 3 3/8 | 142.0 | 3 #4/0AWG |
| | T-300 | 3 | 15 1/8 | 4 3/8 | 4 3/4 | 12 3/8 | 3 3/8 | 173.0 | 3 #4/0AWG |
| | T-350 | 3 1/2 | 18 3/8 | 5 1/2 | 5 1/2 | 15 | 4 1/2 | 290.0 | 3 #350MCM |
| | T-400 | 4 | 18 3/8 | 5 1/2 | 5 1/2 | 15 | 4 1/2 | 324.0 | 3 #350MCM |
|  | T-50G | 1/2 | 5 3/8 | 1 1/8 | 1 1/8 | 4 | 1 1/8 | 4.0 | N/A |
| | T-75G | 3/4 | 6 1/8 | 1 1/8 | 1 1/8 | 4 5/8 | 1 1/8 | 7.0 | 3 #6AWG |
| | T-100G | 1 | 7 1/8 | 1 1/8 | 2 | 5 3/8 | 1 3/4 | 12.0 | 3 #4AWG |
| | T-125G | 1 1/4 | 9 1/8 | 2 3/8 | 2 3/8 | 7 1/4 | 2 1/4 | 32.0 | 3 #2AWG |
| | T-150G | 1 1/2 | 9 1/4 | 2 3/8 | 2 3/4 | 7 1/4 | 2 1/4 | 36.0 | 3 #1AWG |
| | T-200G | 2 | 11 1/8 | 3 1/4 | 3 1/2 | 9 3/8 | 2 3/8 | 70.0 | 3 #2/0AWG |
| | T-250G | 2 1/2 | 15 3/8 | 4 3/8 | 4 | 12 3/8 | 3 3/8 | 142.0 | 3 #4/0AWG |
| | T-300G | 3 | 15 1/8 | 4 3/8 | 4 3/4 | 12 3/8 | 3 3/8 | 173.0 | 3 #4/0AWG |
| | T-350G | 3 1/2 | 18 3/8 | 5 1/2 | 5 1/2 | 15 | 4 1/2 | 290.0 | 3 #350MCM |
| | T-400G | 4 | 18 3/8 | 5 1/2 | 5 1/2 | 15 | 4 1/2 | 324.0 | 3 #350MCM |

Spec 5™ Malleable Iron Conduit Bodies

For Rigid Conduit & IMC

Dimensional Data:

| Type LL | | Dimensions in Inches | | | | | | | Volume Cu. In. | Max No. Conductors |
|----------------|------------|----------------------|-------|-------|--------|-------|--------|--------|----------------|--------------------|
| Catalog Number | Trade Size | B | C | D | G | H | J | | | |
| | LL-50 | 1/2 | 1 1/8 | 1 3/8 | 4 | 1 3/8 | 4 | 4 5/8 | 4.0 | N/A |
| | LL-75 | 3/4 | 1 3/8 | 1 5/8 | 4 5/8 | 1 5/8 | 4 3/8 | 5 1/8 | 7.0 | 3 #6AWG |
| | LL-100 | 1 | 1 5/8 | 2 | 5 5/8 | 1 5/8 | 5 1/8 | 6 1/4 | 12.0 | 3 #4AWG |
| | LL-125 | 1 1/4 | 2 1/8 | 2 3/8 | 7 1/4 | 2 1/4 | 6 3/8 | 8 1/4 | 32.0 | 3 #2AWG |
| | LL-150 | 1 1/2 | 2 3/8 | 2 5/8 | 7 3/4 | 2 3/4 | 6 5/8 | 8 3/4 | 36.0 | 3 #1AWG |
| | LL-200 | 2 | 3 1/4 | 3 1/2 | 9 5/8 | 2 5/8 | 9 | 10 5/8 | 70.0 | 3 #2/0AWG |
| | LL-250 | 2 1/2 | 4 3/8 | 4 | 12 3/8 | 3 3/8 | 11 1/8 | 13 3/4 | 142.0 | 3 #4/0AWG |
| | LL-300 | 3 | 4 5/8 | 4 3/4 | 12 3/8 | 3 3/8 | 11 1/8 | 13 3/4 | 173.0 | 3 #4/0AWG |
| | LL-350 | 3 1/2 | 5 1/8 | 5 5/8 | 15 | 4 1/2 | 13 3/8 | 16 1/4 | 292.0 | 3 #350MCM |
| | LL-400 | 4 | 5 3/8 | 5 5/8 | 15 | 4 1/2 | 13 3/8 | 16 1/4 | 324.0 | 3 #350MCM |

| Type LR | | Dimensions in Inches | | | | | | | Volume Cu. In. | Max No. Conductors |
|----------------|------------|----------------------|-------|-------|--------|-------|--------|--------|----------------|--------------------|
| Catalog Number | Trade Size | B | C | D | G | H | J | | | |
| | LR-50 | 1/2 | 1 1/8 | 1 3/8 | 4 | 1 3/8 | 4 | 4 5/8 | 4.0 | N/A |
| | LR-75 | 3/4 | 1 3/8 | 1 5/8 | 4 5/8 | 1 5/8 | 4 3/8 | 5 1/8 | 7.0 | 3 #6AWG |
| | LR-100 | 1 | 1 5/8 | 2 | 5 5/8 | 1 5/8 | 5 1/8 | 6 1/4 | 12.0 | 3 #4AWG |
| | LR-125 | 1 1/4 | 2 1/8 | 2 3/8 | 7 1/4 | 2 1/4 | 7 | 8 1/4 | 32.0 | 3 #2AWG |
| | LR-150 | 1 1/2 | 2 3/8 | 2 5/8 | 7 3/4 | 2 3/4 | 7 | 8 3/4 | 36.0 | 3 #1AWG |
| | LR-200 | 2 | 3 1/4 | 3 1/2 | 9 5/8 | 2 5/8 | 9 | 10 5/8 | 70.0 | 3 #2/0AWG |
| | LR-250 | 2 1/2 | 4 3/8 | 4 | 12 3/8 | 3 3/8 | 11 1/8 | 13 3/4 | 142.0 | 3 #4/0AWG |
| | LR-300 | 3 | 4 5/8 | 4 3/4 | 12 3/8 | 3 3/8 | 11 1/8 | 13 3/4 | 173.0 | 3 #4/0AWG |
| | LR-350 | 3 1/2 | 5 1/8 | 5 5/8 | 15 | 4 1/2 | 13 3/8 | 16 1/4 | 292.0 | 3 #350MCM |
| | LR-400 | 4 | 5 3/8 | 5 5/8 | 15 | 4 1/2 | 13 3/8 | 16 1/4 | 324.0 | 3 #350MCM |

| Type TB | | Dimensions in Inches | | | | | | Volume Cu. In. | Max No. Conductors |
|----------------|------------|----------------------|--------|-------|-------|-------|-------|----------------|--------------------|
| Catalog Number | Trade Size | A | B | C | D | F | | | |
| | TB-50 | 1/2 | 5 5/8 | 1 3/8 | 1 3/8 | 4 | 1 1/2 | 4.0 | N/A |
| | TB-75 | 3/4 | 6 1/4 | 1 1/2 | 1 3/8 | 4 3/8 | 1 1/2 | 7.0 | 3 #6AWG |
| | TB-100 | 1 | 7 1/8 | 1 3/8 | 2 | 5 3/8 | 1 3/8 | 13.0 | 3 #4AWG |
| | TB-125 | 1 1/4 | 9 5/8 | 2 3/8 | 2 3/8 | 7 1/4 | 2 1/4 | 32.0 | 3 #2AWG |
| | TB-150 | 1 1/2 | 9 3/4 | 2 5/8 | 2 3/4 | 7 1/4 | 2 3/8 | 36.0 | 3 #1AWG |
| | TB-200 | 2 | 11 1/8 | 3 3/8 | 3 1/2 | 9 5/8 | 2 3/4 | 70.0 | 3 #2/0AWG |

Spec 5™ Malleable Iron Conduit Bodies

For Rigid Conduit & IMC

Dimensional Data:

| Type X | | Dimensions in Inches | | | | | | | Volume Cu. In. | Max No. Conductors |
|----------------|------------|----------------------|-------|-------|-------|-------|------|-----------|----------------|--------------------|
| Catalog Number | Trade Size | A | B | C | D | E | | | | |
| X-50 | 1/2 | 5 3/8 | 1 3/8 | 1 3/8 | 4 | 2 3/4 | 4.0 | N/A | | |
| X-75 | 3/4 | 6 1/8 | 1 3/8 | 1 3/8 | 4 5/8 | 3 1/8 | 7.0 | 3 #6AWG | | |
| X-100 | 1 | 7 1/8 | 1 3/8 | 2 | 5 3/8 | 3 1/2 | 12.0 | 3 #4AWG | | |
| X-125 | 1 1/4 | 9 1/8 | 2 3/8 | 2 3/8 | 7 1/4 | 4 1/2 | 32.0 | 3 #2AWG | | |
| X-150 | 1 1/2 | 9 3/4 | 2 3/8 | 2 3/8 | 7 1/4 | 4 3/8 | 36.0 | 3 #1AWG | | |
| X-200 | 2 | 11 3/8 | 3 3/8 | 3 1/2 | 9 1/2 | 5 1/4 | 70.0 | 3 #2/0AWG | | |

| Type C | | Dimensions in Inches | | | | | Volume Cu. In. | Max No. Conductors |
|----------------|------------|----------------------|-------|-------|--------|-------|----------------|--------------------|
| Catalog Number | Trade Size | A | B | C | D | | | |
| C-50 | 1/2 | 5 3/8 | 1 3/8 | 1 3/8 | 4 | 4.0 | N/A | |
| C-75 | 3/4 | 6 1/8 | 1 3/8 | 1 3/8 | 4 5/8 | 7.0 | 3 #6AWG | |
| C-100 | 1 | 7 1/8 | 1 3/8 | 2 | 5 3/8 | 12.0 | 3 #4AWG | |
| C-125 | 1 1/4 | 9 1/8 | 2 3/8 | 2 3/8 | 7 1/4 | 32.0 | 3 #2AWG | |
| C-150 | 1 1/2 | 9 3/4 | 2 3/8 | 2 3/4 | 7 1/4 | 36.0 | 3 #1AWG | |
| C-200 | 2 | 11 3/8 | 3 3/8 | 3 1/2 | 9 3/8 | 70.0 | 3 #2/0AWG | |
| C-250 | 2 1/2 | 15 3/8 | 4 3/8 | 4 | 12 3/8 | 153.0 | 3 #4/0AWG | |
| C-300 | 3 | 15 3/8 | 4 3/8 | 4 3/4 | 12 3/8 | 181.0 | 3 #4/0AWG | |
| C-350 | 3 1/2 | 18 3/8 | 5 1/2 | 5 1/2 | 15 | 290.0 | 3 #350MCM | |
| C-400 | 4 | 18 3/8 | 5 1/2 | 5 3/8 | 15 | 320.0 | 3 #350MCM | |

Spec 5™ Malleable Iron Conduit Bodies

For Rigid Conduit & IMC

Types LB, T, LB-G & T-G

Use:

To provide access to conductors for pulling, splicing, maintenance and future changes/upgrades. Allows connection of straight conduit runs, branch conduit runs and 90° bends.


Features:

- Tapered threaded hubs (NPT).
- Raintight when used with gasketed covers.
- Malleable iron suitable for use in concrete.
- For covers and gaskets, see Pages AB4 and AB5.
- Complete interchangeability with other manufacturers' style "5" or "35" Conduit Bodies.
- Internal volume and maximum wire clearly marked on castings.

Material/Finish:

Malleable Iron/
Zinc Electroplated Aluminum Enamel
Catalog number with suffix "G"
Malleable Iron with Hot Dip Galvanize

Third Party Certification:

-  UL Listed E-18095
Suitable for wet locations when used with gasketed covers.
-  CSA Certified: 009795
Suitable for wet locations when used with gasketed covers.

Applicable Third Party Standards:

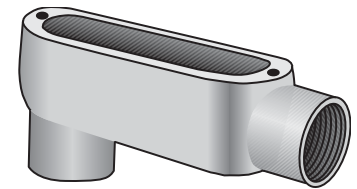
UL Standard: 514A
CSA Standard: C22.2 No. 18
Fed Spec: A-A-50563
NEMA: FB-1, FB-2.10

Dimensional Data:

See Pages AB6 - AB8

Note: Conduit bodies are suitable for use in Class I, Div. 2 hazardous locations per NEC Section 501-4(B).

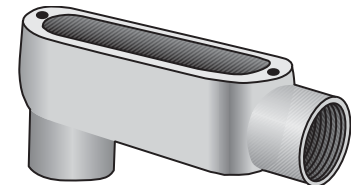
| Trade Size (inches) | Catalog Number Malleable Iron Zinc Plated |
|---------------------|---|
| 1/2 | LB-50 |
| 3/4 | LB-75 |
| 1 | LB-100 |
| 1 1/4 | LB-125 |
| 1 1/2 | LB-150 |
| 2 | LB-200 |
| 2 1/2 | LB-250 |
| 3 | LB-300 |
| 3 1/2 | LB-350 |
| 4 | LB-400 |
| 1/2 | T-50 |
| 3/4 | T-75 |
| 1 | T-100 |
| 1 1/4 | T-125 |
| 1 1/2 | T-150 |
| 2 | T-200 |
| 2 1/2 | T-250 |
| 3 | T-300 |
| 3 1/2 | T-350 |
| 4 | T-400 |



Type LB



Type T



Type LB-G
Hot Dip Galvanized



Type T-G
Hot Dip Galvanized

| Trade Size (inches) | Catalog Number Malleable Iron Hot Dip Galvanized |
|---------------------|--|
| 1/2 | LB-50G |
| 3/4 | LB-75G |
| 1 | LB-100G |
| 1 1/4 | LB-125G |
| 1 1/2 | LB-150G |
| 2 | LB-200G |
| 2 1/2 | LB-250G |
| 3 | LB-300G |
| 3 1/2 | LB-350G |
| 4 | LB-400G |
| 1/2 | T-50G |
| 3/4 | T-75G |
| 1 | T-100G |
| 1 1/4 | T-125G |
| 1 1/2 | T-150G |
| 2 | T-200G |
| 2 1/2 | T-250G |
| 3 | T-300G |
| 3 1/2 | T-350G |
| 4 | T-400G |

Spec 5™ Malleable Iron Conduit Bodies

For Rigid Conduit & IMC

Types LL, LR, TB, X, C

Use:

To provide access to conductors for pulling, splicing, maintenance and future changes/upgrades. Allows connection of straight conduit runs, branch conduit runs and 90° bends.

Features:

- Tapered threaded hubs (NPT).
- Raintight when used with gasketed covers.
- Malleable iron suitable for use in concrete.
- For covers and gaskets, see Pages AB4 and AB5.
- Complete interchangeability with other manufacturers' style "5" or "35" Conduit Bodies.
- Internal volume and maximum wire clearly marked on castings.

Material/Finish:

Malleable Iron/
Zinc Electroplated Aluminum Enamel

Optional Finish:

For additional corrosion protection, specify Hot Dip Galvanized. Add suffix "G" to standard catalog number. Contact your local representative for pricing and availability.

Third Party Certification:



UL Listed E-18095
Suitable for wet locations when used with gasketed covers.



CSA Certified: LR-9795
Suitable for wet locations when used with gasketed covers.

Applicable Third Party Standards:

UL Standard: 514A
CSA Standard: C22.2 No. 18
Fed Spec: A-A-50563
NEMA: FB-1, FB-2.10

Dimensional Data:

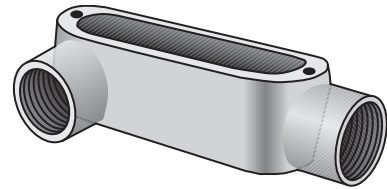
See Pages AB6 - AB8

Note: Conduit bodies are suitable for use in Class I, Div. 2 hazardous locations per NEC Section 501-4(B).

| Trade Size (inches) | Catalog Number Malleable Iron Zinc Plated |
|---------------------|---|
| 1/2 | LL-50 |
| 3/4 | LL-75 |
| 1 | LL-100 |
| 1 1/4 | LL-125 |
| 1 1/2 | LL-150 |
| 2 | LL-200 |
| 2 1/2 | LL-250 |
| 3 | LL-300 |
| 3 1/2 | LL-350 |
| 4 | LL-400 |
| 1/2 | LR-50 |
| 3/4 | LR-75 |
| 1 | LR-100 |
| 1 1/4 | LR-125 |
| 1 1/2 | LR-150 |
| 2 | LR-200 |
| 2 1/2 | LR-250 |
| 3 | LR-300 |
| 3 1/2 | LR-350 |
| 4 | LR-400 |
| 1/2 | TB-50 |
| 3/4 | TB-75 |
| 1 | TB-100 |
| 1 1/4 | TB-125 |
| 1 1/2 | TB-150 |
| 2 | TB-200 |
| 1/2 | X-50 |
| 3/4 | X-75 |
| 1 | X-100 |
| 1 1/4 | X-125 |
| 1 1/2 | X-150 |
| 2 | X-200 |
| 1/2 | C-50 |
| 3/4 | C-75 |
| 1 | C-100 |
| 1 1/4 | C-125 |
| 1 1/2 | C-150 |
| 2 | C-200 |
| 2 1/2 | C-250 |
| 3 | C-300 |
| 3 1/2 | C-350 |
| 4 | C-400 |



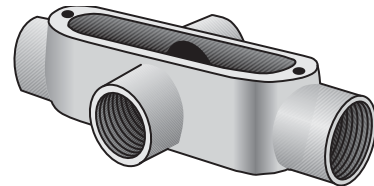
Type LL



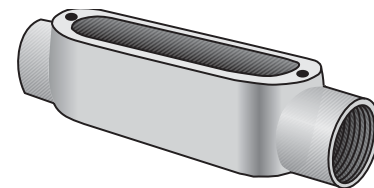
Type LR



Type TB



Type X



Type C

Spec 5™ Conduit Body, Cover & Gasket Assemblies

For Rigid Conduit & IMC

Types LB, LL, LR, C, T

Use:

To provide access to conductors for pulling, splicing, maintenance and future changes/upgrades. Allows connection of straight conduit runs, branch conduit runs and 90° bends.


Features:


- Tapered threaded hubs (NPT)
- Packaged complete under one Catalog Number
- Ready to use

Material/Finish:

Conduit body - Malleable Iron
Zinc Electroplated with Aluminum Enamel
Cover - Type BS Steel Zinc Electroplated
Gasket - Type SGN Neoprene

Third Party Certification:

 UL Listed:
E-18095
Suitable for wet locations

 CSA Certified:
LR-9795
Suitable for wet locations.

Applicable Third Party Standards:

UL Standard: 514A
CSA Standard: C22.2 No. 18
Fed Spec: A-A-50563
NEMA: FB-1, FB-2.10

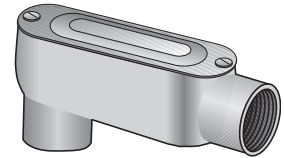
Dimensional Data:

See Pages AB6 - AB8.

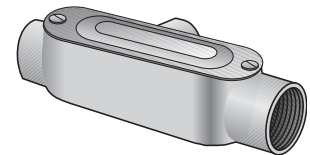
Note: For additional information, please refer to:

- Conduit Bodies on pages AB1 and AB2.
- Covers and Gaskets on page AB4.

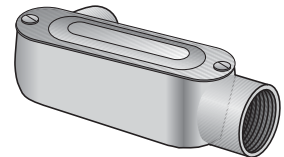
| Trade Size (inches) | Catalog Number |
|------------------------|-------------------|
| ½ | LB-50CG |
| ¾ | LB-75CG |
| 1 | LB-100CG |
| 1¼ | LB-125CG |
| 1½ | LB-150CG |
| 2 | LB-200CG |
| ½ | T-50CG |
| ¾ | T-75CG |
| 1 | T-100CG |
| 1¼ | T-125CG |
| 1½ | T-150CG |
| 2 | T-200CG |
| ½ | LL-50CG |
| ¾ | LL-75CG |
| 1 | LL-100CG |
| 1¼ | LL-125CG |
| 1½ | LL-150CG |
| 2 | LL-200CG |
| ½ | LR-50CG |
| ¾ | LR-75CG |
| 1 | LR-100CG |
| 1¼ | LR-125CG |
| 1½ | LR-150CG |
| 2 | LR-200CG |
| ½ | C-50CG |
| ¾ | C-75CG |
| 1 | C-100CG |
| 1¼ | C-125CG |
| 1½ | C-150CG |
| 2 | C-200CG |



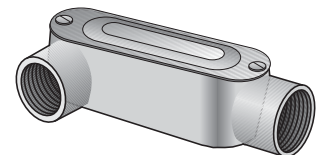
Type LB-CG



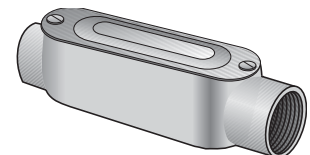
Type T-CG



Type LL-CG



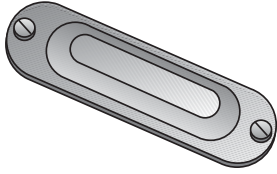
Type LR-CG



Type C-CG

Spec 5™ Covers & Gaskets

For O-Z/Gedney Malleable Iron Conduit Bodies



Type BS-S

Type BS-S Domed Top Design Cover

Use:
To cover conduit body opening.

Material/Finish:
Stamped Steel Pre-Galvanized
Stainless Steel Screws
Natural Finish

Third Party Certification:
 UL Listed:
E-18095
Suitable for wet locations when used with gaskets, Type SGN or SG on malleable iron conduit bodies.

 CSA Certified:
LR-9795
Suitable for wet locations when used with gaskets, Type SGN or SG on malleable iron conduit bodies.

Applicable Third Party Standards:
 UL Standard: 514A
 CSA Standard: C22.2 No. 18
 Fed Spec: A-A-50563
 NEMA: FB-1, FB-2.10



Type BC-G

Type BC-G Flat Top Design Cover

Use:
To cover conduit body opening.

Material/Finish:
Gray Iron/Hot Dip Galvanized stainless steel screws.

Third Party Certification:
 UL Listed:
E-18095
Suitable for wet locations when used with gaskets, Type SG on malleable iron conduit bodies.

 CSA Certified:
LR-9795
Suitable for wet locations when used with gaskets, Type SG on malleable iron conduit bodies.

Applicable Third Party Standards:
 UL Standard: 514A
 CSA Standard: C22.2 No. 18
 Fed Spec: A-A-50563
 NEMA: FB-1, FB-2.10



Type SG & SGN

Type SG & SGN Solid Cover Sealing Gasket

Use:
To provide a worry-free, raintight seal when used with Type BS or BC covers.

Material:
Velbuna Composition
Closed-Cell Neoprene Foam Gasket
Temperature Rating: 212°F/100°C

Note: UL/CSA not applicable.

| Trade Size (inches) | Catalog Number |
|---------------------|----------------|
| 1/2 | BS-50S |
| 3/4 | BS-75S |
| 1 | BS-100S |
| 1 1/4-1 1/2 | BS-125S |
| 2 | BS-200S |
| 2 1/2-3 | BS-250S |
| 3 1/2-4 | BS-350S* |

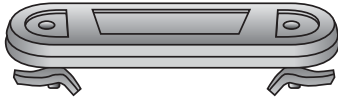
| Trade Size (inches) | Catalog Number |
|---------------------|----------------|
| 1/2 | BC-50G |
| 3/4 | BC-75G |
| 1 | BC-100G |
| 1 1/4-1 1/2 | BC-125G |
| 2 | BC-200G |
| 2 1/2-3 | BC-250G |
| 3 1/2-4 | BC-350G |

| Trade Size (inches) | Catalog Number Velbuna | Catalog Number Neoprene |
|---------------------|------------------------|-------------------------|
| 1/2 | SG-50 | SGN-50 |
| 3/4 | SG-75 | SGN-75 |
| 1 | SG-100 | SGN-100 |
| 1 1/4-1 1/2 | SG-125 | SGN-125 |
| 2 | SG-200 | SGN-200 |
| 2 1/2-3 | SG-250 | SGN-250 |
| 3 1/2-4 | SG-350 | SGN-350 |

* Flat Top Design Cover

Spec 5™ Covers & Gaskets

For O-Z/Gedney Malleable Iron Conduit Bodies



Type BCC

Type BCC Clip-On™ Cover

Use:

To cover conduit body opening.

Material/Finish:

Gray Iron/Zinc Electroplated
Stainless Steel Screws
Steel, Zinc-Plated Clips

Third Party Certification:



UL Listed:
E-18095

Suitable for wet locations when
used with gaskets, Type SGNC on
malleable iron conduit bodies.



CSA Certified:
009795

Suitable for wet locations when
used with gaskets, Type SGNC on
malleable iron conduit bodies.

Applicable Third Party Standards:

UL Standard: 514A
CSA Standard: C22.2 No. 18
Fed Spec: A-A-50563
NEMA: FB-1, FB-2.10



Type SGNC

Type SGNC Cover Gasket

Use:

To provide a worry-free, raintight seal when
used with Clip-On™ Type BCC cover.

Material:

Closed-Cell Neoprene Foam Gasket
Temperature Rating: 212°F/100°C

Note: UL/CSA not applicable.

| Trade Size (inches) | Catalog Number |
|------------------------|-------------------|
| ½ | BCC-50 |
| ¾ | BCC-75 |
| 1 | BCC-100 |
| 1¼-1½ | BCC-125 |
| 2 | BCC-200 |
| 2½-3 | BCC-250 |
| 3½-4 | BCC-350 |

| Trade Size (inches) | Catalog Number |
|------------------------|-------------------|
| ½ | SGNC-50 |
| ¾ | SGNC-75 |
| 1 | SGNC-100 |
| 1¼-1½ | SGNC-125 |
| 2 | SGNC-200 |
| 2½-3 | SGNC-250 |
| 3½-4 | SGNC-350 |

Spec 5™ Malleable Iron Conduit Bodies

For Rigid Conduit & IMC

Dimensional Data:

| Type LB | Catalog Number | Trade Size | Dimensions in Inches | | | | | | Volume Cu. In. | Max No. Conductors |
|---------|----------------|------------|----------------------|-------|--------|-------|--------|--------|----------------|--------------------|
| | | | B | C | D | F | H | J | | |
| | LB-50 | 1/2 | 1 1/8 | 1 1/8 | 4 | 1 1/2 | 4 | 4 5/8 | 4.0 | N/A |
| | LB-75 | 3/4 | 1 1/8 | 1 1/8 | 4 5/8 | 1 1/8 | 4 5/8 | 5 1/8 | 7.0 | 3 #6AWG |
| | LB-100 | 1 | 1 1/8 | 2 | 5 3/8 | 1 1/8 | 5 3/8 | 6 1/4 | 12.0 | 3 #4AWG |
| | LB-125 | 1 1/4 | 2 1/8 | 2 1/8 | 7 1/4 | 2 1/4 | 7 | 8 1/4 | 32.0 | 3 #2AWG |
| | LB-150 | 1 1/2 | 2 1/8 | 2 3/4 | 7 3/8 | 2 3/8 | 7 | 8 1/4 | 36.0 | 3 #1/0AWG |
| | LB-200 | 2 | 3 1/4 | 3 3/8 | 9 3/8 | 2 3/4 | 9 3/8 | 10 3/8 | 70.0 | 3 #4/0AWG |
| | LB-250 | 2 1/2 | 4 3/8 | 4 | 12 3/8 | 3 3/8 | 11 3/8 | 13 3/4 | 142.0 | 3 #300MCM |
| | LB-300 | 3 | 4 3/8 | 4 3/4 | 12 3/8 | 3 3/8 | 11 3/8 | 13 3/4 | 173.0 | 3 #400MCM |
| | LB-350 | 3 1/2 | 5 1/8 | 5 1/2 | 15 | 4 1/4 | 14 | 16 3/4 | 292.0 | 3 #500MCM |
| | LB-400 | 4 | 5 1/8 | 5 1/8 | 15 | 4 1/4 | 14 | 16 3/4 | 324.0 | 3 #500MCM |
| | LB-50G | 1/2 | 1 1/8 | 1 1/8 | 4 | 1 1/2 | 4 | 4 5/8 | 4.0 | N/A |
| | LB-75G | 3/4 | 1 1/8 | 1 1/8 | 4 5/8 | 1 1/8 | 4 5/8 | 5 1/8 | 7.0 | 3 #6AWG |
| | LB-100G | 1 | 1 1/8 | 2 | 5 3/8 | 1 1/8 | 5 3/8 | 6 1/4 | 12.0 | 3 #4AWG |
| | LB-125G | 1 1/4 | 2 1/8 | 2 1/8 | 7 1/4 | 2 1/4 | 7 | 8 1/4 | 32.0 | 3 #2AWG |
| | LB-150G | 1 1/2 | 2 1/8 | 2 3/4 | 7 3/8 | 2 3/8 | 7 | 8 1/4 | 36.0 | 3 #1/0AWG |
| | LB-200G | 2 | 3 1/4 | 3 3/8 | 9 3/8 | 2 3/4 | 9 3/8 | 10 3/8 | 70.0 | 3 #4/0AWG |
| | LB-250G | 2 1/2 | 4 3/8 | 4 | 12 3/8 | 3 3/8 | 11 3/8 | 13 3/4 | 142.0 | 3 #300MCM |
| | LB-300G | 3 | 4 3/8 | 4 3/4 | 12 3/8 | 3 3/8 | 11 3/8 | 13 3/4 | 173.0 | 3 #400MCM |
| | LB-350G | 3 1/2 | 5 1/8 | 5 1/2 | 15 | 4 1/4 | 13 3/8 | 16 3/4 | 292.0 | 3 #500MCM |
| | LB-400G | 4 | 5 1/8 | 5 1/8 | 15 | 4 1/4 | 14 | 16 3/4 | 324.0 | 3 #500MCM |

| Type T | Catalog Number | Trade Size | Dimensions in Inches | | | | | Volume Cu. In. | Max No. Conductors |
|--------|----------------|------------|----------------------|-------|-------|--------|-------|----------------|--------------------|
| | | | A | B | C | D | G | | |
| | T-50 | 1/2 | 5 3/8 | 1 1/8 | 1 1/8 | 4 | 1 1/8 | 4.0 | N/A |
| | T-75 | 3/4 | 6 1/8 | 1 1/8 | 1 1/8 | 4 5/8 | 1 1/8 | 7.0 | 3 #6AWG |
| | T-100 | 1 | 7 1/8 | 1 1/8 | 2 | 5 3/8 | 1 3/4 | 12.0 | 3 #4AWG |
| | T-125 | 1 1/4 | 9 1/8 | 2 3/8 | 2 3/8 | 7 1/4 | 2 1/4 | 32.0 | 3 #2AWG |
| | T-150 | 1 1/2 | 9 1/4 | 2 3/8 | 2 3/4 | 7 1/4 | 2 1/4 | 36.0 | 3 #1AWG |
| | T-200 | 2 | 11 1/8 | 3 1/4 | 3 1/2 | 9 3/8 | 2 3/8 | 70.0 | 3 #2/0AWG |
| | T-250 | 2 1/2 | 15 1/8 | 4 3/8 | 4 | 12 3/8 | 3 3/8 | 142.0 | 3 #4/0AWG |
| | T-300 | 3 | 15 1/8 | 4 3/8 | 4 3/4 | 12 3/8 | 3 3/8 | 173.0 | 3 #4/0AWG |
| | T-350 | 3 1/2 | 18 3/8 | 5 1/2 | 5 1/2 | 15 | 4 1/2 | 290.0 | 3 #350MCM |
| | T-400 | 4 | 18 3/8 | 5 1/2 | 5 1/2 | 15 | 4 1/2 | 324.0 | 3 #350MCM |
| | T-50G | 1/2 | 5 3/8 | 1 1/8 | 1 1/8 | 4 | 1 1/8 | 4.0 | N/A |
| | T-75G | 3/4 | 6 1/8 | 1 1/8 | 1 1/8 | 4 5/8 | 1 1/8 | 7.0 | 3 #6AWG |
| | T-100G | 1 | 7 1/8 | 1 1/8 | 2 | 5 3/8 | 1 3/4 | 12.0 | 3 #4AWG |
| | T-125G | 1 1/4 | 9 1/8 | 2 3/8 | 2 3/8 | 7 1/4 | 2 1/4 | 32.0 | 3 #2AWG |
| | T-150G | 1 1/2 | 9 1/4 | 2 3/8 | 2 3/4 | 7 1/4 | 2 1/4 | 36.0 | 3 #1AWG |
| | T-200G | 2 | 11 1/8 | 3 1/4 | 3 1/2 | 9 3/8 | 2 3/8 | 70.0 | 3 #2/0AWG |
| | T-250G | 2 1/2 | 15 1/8 | 4 3/8 | 4 | 12 3/8 | 3 3/8 | 142.0 | 3 #4/0AWG |
| | T-300G | 3 | 15 1/8 | 4 3/8 | 4 3/4 | 12 3/8 | 3 3/8 | 173.0 | 3 #4/0AWG |
| | T-350G | 3 1/2 | 18 3/8 | 5 1/2 | 5 1/2 | 15 | 4 1/2 | 290.0 | 3 #350MCM |
| | T-400G | 4 | 18 3/8 | 5 1/2 | 5 1/2 | 15 | 4 1/2 | 324.0 | 3 #350MCM |

Spec 5™ Malleable Iron Conduit Bodies

For Rigid Conduit & IMC

Dimensional Data:

| Type LL | | Dimensions in Inches | | | | | | | Volume Cu. In. | Max No. Conductors |
|----------------|------------|----------------------|-------|-------|--------|-------|--------|--------|----------------|--------------------|
| Catalog Number | Trade Size | B | C | D | G | H | J | | | |
| | LL-50 | 1/2 | 1 1/8 | 1 3/8 | 4 | 1 3/8 | 4 | 4 5/8 | 4.0 | N/A |
| | LL-75 | 3/4 | 1 3/8 | 1 5/8 | 4 5/8 | 1 5/8 | 4 3/8 | 5 1/8 | 7.0 | 3 #6AWG |
| | LL-100 | 1 | 1 5/8 | 2 | 5 5/8 | 1 3/4 | 5 3/8 | 6 1/4 | 12.0 | 3 #4AWG |
| | LL-125 | 1 1/4 | 2 1/8 | 2 3/8 | 7 1/4 | 2 1/4 | 6 3/8 | 8 1/4 | 32.0 | 3 #2AWG |
| | LL-150 | 1 1/2 | 2 3/8 | 2 3/4 | 7 3/4 | 2 3/4 | 6 3/8 | 8 3/4 | 36.0 | 3 #1AWG |
| | LL-200 | 2 | 3 1/4 | 3 1/2 | 9 5/8 | 2 5/8 | 9 | 10 5/8 | 70.0 | 3 #2/0AWG |
| | LL-250 | 2 1/2 | 4 3/8 | 4 | 12 3/8 | 3 3/8 | 11 1/8 | 13 3/4 | 142.0 | 3 #4/0AWG |
| | LL-300 | 3 | 4 5/8 | 4 3/4 | 12 3/8 | 3 3/8 | 11 1/8 | 13 3/4 | 173.0 | 3 #4/0AWG |
| | LL-350 | 3 1/2 | 5 3/8 | 5 5/8 | 15 | 4 1/2 | 13 3/8 | 16 3/4 | 292.0 | 3 #350MCM |
| | LL-400 | 4 | 5 3/8 | 5 5/8 | 15 | 4 1/2 | 13 3/8 | 16 3/4 | 324.0 | 3 #350MCM |

| Type LR | | Dimensions in Inches | | | | | | | Volume Cu. In. | Max No. Conductors |
|----------------|------------|----------------------|-------|-------|--------|-------|--------|--------|----------------|--------------------|
| Catalog Number | Trade Size | B | C | D | G | H | J | | | |
| | LR-50 | 1/2 | 1 1/8 | 1 3/8 | 4 | 1 3/8 | 4 | 4 5/8 | 4.0 | N/A |
| | LR-75 | 3/4 | 1 3/8 | 1 5/8 | 4 5/8 | 1 5/8 | 4 3/8 | 5 1/8 | 7.0 | 3 #6AWG |
| | LR-100 | 1 | 1 5/8 | 2 | 5 5/8 | 1 3/4 | 5 3/8 | 6 1/4 | 12.0 | 3 #4AWG |
| | LR-125 | 1 1/4 | 2 1/8 | 2 3/8 | 7 1/4 | 2 1/4 | 7 | 8 1/4 | 32.0 | 3 #2AWG |
| | LR-150 | 1 1/2 | 2 3/8 | 2 3/4 | 7 1/4 | 2 1/4 | 7 | 8 3/4 | 36.0 | 3 #1AWG |
| | LR-200 | 2 | 3 1/4 | 3 1/2 | 9 5/8 | 2 5/8 | 9 | 10 5/8 | 70.0 | 3 #2/0AWG |
| | LR-250 | 2 1/2 | 4 3/8 | 4 | 12 3/8 | 3 3/8 | 11 1/8 | 13 3/4 | 142.0 | 3 #4/0AWG |
| | LR-300 | 3 | 4 5/8 | 4 3/4 | 12 3/8 | 3 3/8 | 11 1/8 | 13 3/4 | 173.0 | 3 #4/0AWG |
| | LR-350 | 3 1/2 | 5 3/8 | 5 5/8 | 15 | 4 1/2 | 13 3/8 | 16 3/4 | 292.0 | 3 #350MCM |
| | LR-400 | 4 | 5 3/8 | 5 5/8 | 15 | 4 1/2 | 13 3/8 | 16 3/4 | 324.0 | 3 #350MCM |

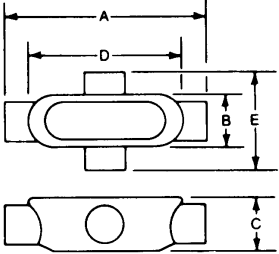
| Type TB | | Dimensions in Inches | | | | | | Volume Cu. In. | Max No. Conductors |
|----------------|------------|----------------------|--------|-------|-------|-------|-------|----------------|--------------------|
| Catalog Number | Trade Size | A | B | C | D | F | | | |
| | TB-50 | 1/2 | 5 5/8 | 1 3/8 | 1 3/8 | 4 | 1 1/2 | 4.0 | N/A |
| | TB-75 | 3/4 | 6 1/4 | 1 1/2 | 1 5/8 | 4 3/8 | 1 1/2 | 7.0 | 3 #6AWG |
| | TB-100 | 1 | 7 1/8 | 1 5/8 | 2 | 5 3/8 | 1 5/8 | 13.0 | 3 #4AWG |
| | TB-125 | 1 1/4 | 9 5/8 | 2 3/8 | 2 3/8 | 7 1/4 | 2 1/4 | 32.0 | 3 #2AWG |
| | TB-150 | 1 1/2 | 9 3/4 | 2 5/8 | 2 3/4 | 7 1/4 | 2 3/8 | 36.0 | 3 #1AWG |
| | TB-200 | 2 | 11 1/8 | 3 3/8 | 3 1/2 | 9 5/8 | 2 3/4 | 70.0 | 3 #2/0AWG |

Spec 5™ Malleable Iron Conduit Bodies

For Rigid Conduit & IMC

Dimensional Data:

| Type X | | Dimensions in Inches | | | | | | | Volume Cu. In. | Max No. Conductors |
|----------------|------------|----------------------|-------|-------|-------|-------|------|-----------|----------------|--------------------|
| Catalog Number | Trade Size | A | B | C | D | E | | | | |
| X-50 | 1/2 | 5 5/8 | 1 5/8 | 1 5/8 | 4 | 2 3/4 | 4.0 | N/A | | |
| X-75 | 3/4 | 6 5/8 | 1 5/8 | 1 5/8 | 4 5/8 | 3 3/8 | 7.0 | 3 #6AWG | | |
| X-100 | 1 | 7 5/8 | 1 5/8 | 2 | 5 5/8 | 3 1/2 | 12.0 | 3 #4AWG | | |
| X-125 | 1 1/4 | 9 5/8 | 2 5/8 | 2 5/8 | 7 1/4 | 4 1/2 | 32.0 | 3 #2AWG | | |
| X-150 | 1 1/2 | 9 3/4 | 2 3/8 | 2 3/8 | 7 1/4 | 4 5/8 | 36.0 | 3 #1AWG | | |
| X-200 | 2 | 11 5/8 | 3 3/8 | 3 1/2 | 9 1/2 | 5 1/4 | 70.0 | 3 #2/0AWG | | |



| Type C | | Dimensions in Inches | | | | | Volume Cu. In. | Max No. Conductors |
|----------------|------------|----------------------|-------|-------|--------|-------|----------------|--------------------|
| Catalog Number | Trade Size | A | B | C | D | | | |
| C-50 | 1/2 | 5 5/8 | 1 5/8 | 1 5/8 | 4 | 4.0 | N/A | |
| C-75 | 3/4 | 6 5/8 | 1 5/8 | 1 5/8 | 4 5/8 | 7.0 | 3 #6AWG | |
| C-100 | 1 | 7 5/8 | 1 5/8 | 2 | 5 5/8 | 12.0 | 3 #4AWG | |
| C-125 | 1 1/4 | 9 5/8 | 2 5/8 | 2 5/8 | 7 1/4 | 32.0 | 3 #2AWG | |
| C-150 | 1 1/2 | 9 3/4 | 2 5/8 | 2 3/4 | 7 1/4 | 36.0 | 3 #1AWG | |
| C-200 | 2 | 11 5/8 | 3 3/8 | 3 1/2 | 9 5/8 | 70.0 | 3 #2/0AWG | |
| C-250 | 2 1/2 | 15 5/8 | 4 3/8 | 4 | 12 3/8 | 153.0 | 3 #4/0AWG | |
| C-300 | 3 | 15 5/8 | 4 3/8 | 4 3/4 | 12 3/8 | 181.0 | 3 #4/0AWG | |
| C-350 | 3 1/2 | 18 5/8 | 5 1/2 | 5 1/2 | 15 | 290.0 | 3 #350MCM | |
| C-400 | 4 | 18 5/8 | 5 1/2 | 5 5/8 | 15 | 320.0 | 3 #350MCM | |

