

Project		Catalog #		Type	
Prepared by		Notes		Date	



HALO

RL4 | Selectable CCT

4-inch All-purpose LED retrofit module with SeleCCTable switch

Typical Applications

Residential

Interactive Menu

- Order Information page 2
- Product Specifications page 3
- Photometric Data page 4
- Energy & Performance Data page 4
- Product Warranty
- Dimming Guide

Product Certification



Refer to ENERGY STAR® Certified Products List. Can be used to comply with California Title 24 High Efficacy requirements. Certified to California Appliance Efficiency Database under JAB.

Note: Due to T20 change, as of July 1, 2019 consult factory on correct catalog number and availability for T20 compliant California product.

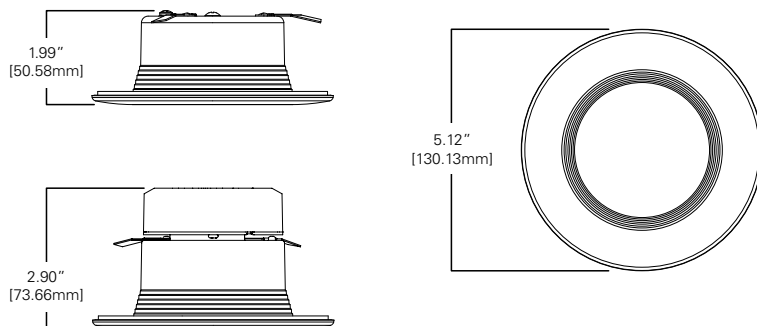
Product Features



Top Product Features

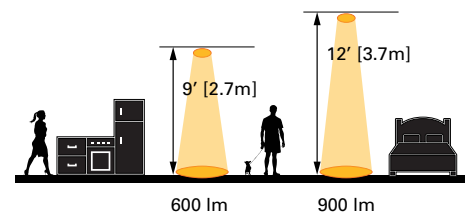
- Select from 5 CCTs via switch; 2700K, 3000K, 3500K, 4000K, 5000K CCT; 90 CRI
- Lumens: 600, 900
- Use with 4" housings with screwbase adapter included
- Dimmable down to 5%
- Friction blade mounting

Dimensional and Mounting Details



Note: .86" lens regression

Scale



Order Information*

SAMPLE ORDER NUMBER: **RL4069S1EWHR**

Models	Lumens	CRI/CCT	Driver	Finish	Packaging	T20 Compliant
RL4 = 4" all-purpose retrofit LED module	06 = 600 lumens (nominal) 09 = 900 lumens (nominal)	9S = 90 CRI minimum, white tuning, selectable CCT 2700K-5000K	1E = 120V 60Hz leading or trailing edge phase cut 1% dimming	WH = Matte white baffle	R = Recyclable	-CA
Notes	Notes	Notes	Notes	Notes	Notes	Notes

Accessories

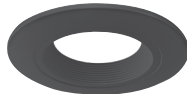
Accessories
<p>Designer Trims</p> <p>RL4TRMWHB = 4" decorative overlay, white paintable, Baffle RL4TRMMBB = 4" decorative overlay, matte black, Baffle RL4TRMSNB = 4" decorative overlay, satin nickel, Baffle RL4TRMTBZB = 4" decorative overlay, tuscan bronze, Baffle</p> <p>RL4TRMWH = 4" decorative overlay, white paintable, smooth splay RL4TRMMB = 4" decorative overlay, matte black, smooth splay RL4TRMSN = 4" decorative overlay, satin nickel, smooth splay RL4TRMTBZ = 4" decorative overlay, tuscan bronze, smooth splay</p>
Notes

Housings

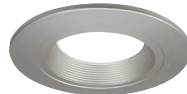
Housings
<p>Halo Ultra-shallow LED Housings</p> <p>H245ICAT = 4" IC, airtight ultra-shallow new construction housing, LED, 120 - 277V H245RICAT = 4" IC, airtight ultra-shallow remodeler housing, LED, 120 - 277V</p> <p>Halo LED Housings</p> <p>H995ICAT = 4" IC, airtight shallow new construction housing, LED, 120 - 277V H995RICAT = 4" IC, airtight shallow remodeler housing, LED, 120 - 277V</p> <p>Halo Housings</p> <p>H99TAT = 4" non-IC, airtight shallow new construction housing, E26, 120V H99RTAT = 4" non-IC, airtight shallow remodeler housing, E26, 120V H99ICAT = 4" IC, airtight shallow new construction housing, E26, 120V E47ATSB = 4" non-IC, airtight shallow new construction housing, adjustable socket bracket, E26, 120V E47RTSB = 4" non-IC, airtight shallow remodeler housing, adjustable socket bracket, E26, 120V E4ICATSB = 4" non-IC, airtight shallow new construction housing, adjustable socket bracket, E26, 120V</p>
Notes



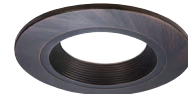
RL4TRMWHB
White (Paintable), Baffle



RL4TRMMBB
Matte Black, Baffle



RL4TRMSNB
Satin Nickel, Baffle



RL4TRMTBZB
Tuscan Bronze, Baffle



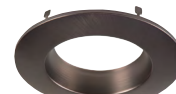
RL4TRMWH
White (Paintable), Splay



RL4TRMMB
Matte Black, Splay



RL4TRMSN
Satin Nickel, Splay



RL4TRMTBZ
Tuscan Bronze, Splay

Product Specifications

CCT Select System

- Use the switch to choose between 2700K, 3000K, 3500K, 4000K, and 5000K CCT.

Module - Trim

- Module construction includes LED array, heat sink, reflector, lens, baffle and trim ring.
- Regressed baffle
- Heat sink designed to conduct heat away from the LED array, keeping the junction temperatures below specified maximums, even when installed in insulated ceiling environments.

LED Array

- Mid power LED array provides a uniform source with high efficiency and no pixilation.
- 90 CRI minimum, R9 greater than 50
- Color accuracy at 4 SDCM in between endpoints, provide color accuracy and uniformity.
- Color Temperature (CCT) has a selectable range from 2700K to 5000K (factory default 3000K)

Optical Assembly

- Regressed lens
- Impact-resistant polycarbonate
- Convex form and lamp-like appearance
- Diffuse for even illumination

Driver

- Integral 120V 60 Hz constant current driver provides noise free operation
- Continuous, flicker-free dimming from 100% to 5%.
- Inline electrical quick connect and E26 adapter (provided) provides mains connections
- See Dimming Guide for compatible dimmers

Retention

- Push-N-Twist universal installation clips
- Clips are pre-installed and designed to fit 4" compatible recessed housings

Designer Skins (sold separately)

- RL4 skins are accessory rings that attach to the RL4 for a permanent finish. Refer to the RL4 accessories specification sheet for details.
 - White (Paintable)
 - Satin Nickel
 - Tuscan Bronze

Gaskets

- Closed cell gaskets achieve restrictive airflow requirements without additional caulking

Compliance

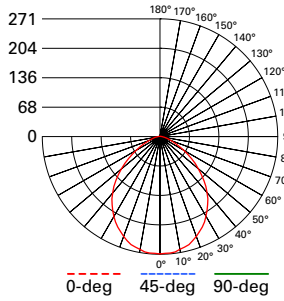
- UL Certified
- Wet and Damp location listed
- Airtight certified per ASTM-E283
- Suitable for use in clothes closets when installed in accordance with the NEC 410.16 spacing requirements
- EMI/RFI emissions per FCC 47CFR Part 15 consumer limits
- Contains no mercury or lead and RoHS compliant
- Photometric testing in accordance with IES LM-79-08
- Lumen maintenance projections in accordance with IES LM-80-08 and TM-21-11
- Can be used for State of California Title 24 high efficacy luminaire compliance. Complies with Title 24 JA8-2016-E.
- Can be used International Energy Conservation Code (IECC) high efficiency luminaire compliance.
- ENERGY STAR® listed, reference database for current listings

Warranty

- Five year limited warranty, consult website for details. www.cooperlighting.com/warranty

Photometric Data

[View IES files](#)



RL4069S1EWHR-3000K
 Spacing criterion: (0-180) 1.18
 (90-270) 1.18
 (Diagonal) 1.26
 Beam Angle: 93.1°
 Field Angle: 141.1°
 Lumens: 597
 Input Watts: 8.0 W
 Efficacy: 74.6 LPW
 Test Report:
 RL4069S1EWHR-3000K.ies

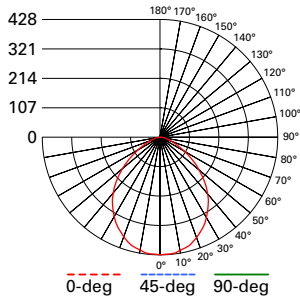
Zonal Lumen	Lumens	% Lumens
0-30	203	35.3
0-40	322	56
0-60	511	88.8
0-90	575	100

TM-30-15	Rf = 91.1
	Rg = 100.9
CRI/CIE	Ra = 93.1
	R9 = 64.9

CCT - Range of 2700K- 5000K



93°



RL4099S1EWHR-3000K
 Spacing criterion: (0-180) 1.17
 (90-270) 1.17
 (Diagonal) 1.25
 Beam Angle: 93°
 Field Angle: 141.1°
 Lumens: 952
 Input Watts: 12.0 W
 Efficacy: 79.3 LPW
 Test Report:
 RL4099S1EWHR-3000K.ies

Zonal Lumen	Lumens	% Lumens
0-30	323	35.3
0-40	512	56
0-60	813	88.8
0-90	915	100

TM-30-15	Rf = 91.1
	Rg = 100.9
CRI/CIE	Ra = 93.1
	R9 = 64.9

CCT - Range of 2700K- 5000K



93°

Energy and Performance Data

RL4069S1EWHR	
Max. Lumens	632 @ 5000K
Input Voltage	120V
Input Frequency	50/60 Hz
Input Power	8.0W
Input Current	0.075A - 0.0875A (Per input power)
Power Factor	>0.90
THD	<20%
EMI/RFI	FCC Title 47 CFR, Part 15, Class B (Consumer)
Sound Rating	Class A
Minimum Starting Temp	-30°C (-22°F)

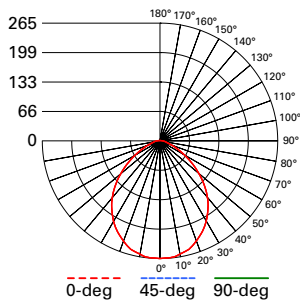
RL4099S1EWHR	
Max. Lumens	1033 @ 5000K
Input Voltage	120V
Input Frequency	50/60 Hz
Input Power	11.9W
Input Current	0.075A - 0.0875A (Per input power)
Power Factor	>0.90
THD	<20%
EMI/RFI	FCC Title 47 CFR, Part 15, Class B (Consumer)
Sound Rating	Class A
Minimum Starting Temp	-30°C (-22°F)

Tested in accordance with IES LM63. Field results may vary.

Note: Refer to IES files for more product data.

Photometric Data

[View IES files](#)

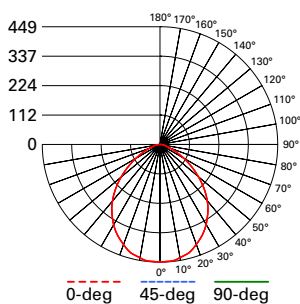


RL4069S1EWHR-CA-3000K
 Spacing criterion: (0-180) 1.17
 (90-270) 1.17
 (Diagonal) 1.25
 Beam Angle: 93.1°
 Field Angle: 141.1°
 Lumens: 576
 Input Watts: 6.3 W
 Efficacy: 91.4 LPW
 Test Report:
 RL4069S1EWHR-CA-3000K.ies

Zonal Lumen	Lumens	% Lumens
0-30	203	35.3
0-40	322	56
0-60	511	88.8
0-90	576	100

TM-30-15	Rf = 91.1
	Rg = 100.9
CRI/CIE	Ra = 93.1
	R9 = 64.9

CCT - Range of 2700K- 5000K



RL4099S1EWHR-CA-3000K
 Spacing criterion: (0-180) 1.17
 (90-270) 1.17
 (Diagonal) 1.25
 Beam Angle: 93°
 Field Angle: 141.1°
 Lumens: 967
 Input Watts: 9.9 W
 Efficacy: 97.7 LPW
 Test Report:
 RL4099S1EWHR-CA-3000K.ies

Zonal Lumen	Lumens	% Lumens
0-30	341	35.3
0-40	542	56
0-60	859	88.8
0-90	967	100

TM-30-15	Rf = 91.1
	Rg = 100.9
CRI/CIE	Ra = 93.1
	R9 = 64.9

CCT - Range of 2700K- 5000K



Energy and Performance Data

RL4069S1EWHR-CA	
Max. Lumens	590 @ 4000K
Input Voltage	120V
Input Frequency	50/60 Hz
Input Power	6.3W
Input Current	0.075A - 0.0875A (Per input power)
Power Factor	>0.90
THD	<20%
EMI/RFI	FCC Title 47 CFR, Part 15, Class B (Consumer)
Sound Rating	Class A
Minimum Starting Temp	-30°C (-22°F)

RL4099S1EWHR-CA	
Max. Lumens	992 @ 5000K
Input Voltage	120V
Input Frequency	50/60 Hz
Input Power	9.8W
Input Current	0.075A - 0.0875A (Per input power)
Power Factor	>0.90
THD	<20%
EMI/RFI	FCC Title 47 CFR, Part 15, Class B (Consumer)
Sound Rating	Class A
Minimum Starting Temp	-30°C (-22°F)