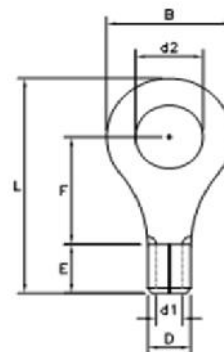


Non-Insulated Ring Terminals

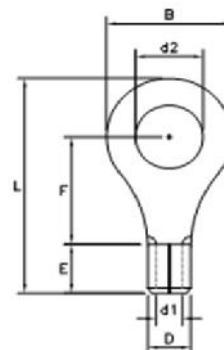
Drawn - SD
Approved - KM
Material - Copper

Title - Non-Insulated Ring Terminals



| Part Number | Wire Range | Electrical Rating Max | d2 | B | F | L | E | D | d1 |
|-------------|------------|-----------------------|--------|--------|--------|--------|--------|--------|--------|
| R22-6 | 22-18 AWG | 105C / 600 Volts | 0.1400 | 0.3120 | 0.2950 | 0.7020 | 0.2560 | 0.1270 | 0.0620 |
| R22-8 | 22-18 AWG | 105C / 600 Volts | 0.1692 | 0.3149 | 0.2755 | 0.6299 | 0.1968 | 0.1338 | 0.0669 |
| R22-10 | 22-18 AWG | 105C / 600 Volts | 0.2086 | 0.3149 | 0.2755 | 0.6299 | 0.1968 | 0.1338 | 0.0669 |
| R22-14 | 22-18 AWG | 105C / 600 Volts | 0.2550 | 0.4660 | 0.4260 | 0.8940 | 0.2550 | 0.1290 | 0.0710 |
| R22-56 | 22-18 AWG | 105C / 600 Volts | 0.3230 | 0.4690 | 0.4350 | 0.8930 | 0.2580 | 0.1290 | 0.0710 |
| R22-38 | 22-18 AWG | 105C / 600 Volts | 0.3800 | 0.5350 | 0.5910 | 1.0970 | 0.2560 | 0.1290 | 0.0710 |
| R16-6 | 16-14 AWG | 105C / 600 Volts | 0.1380 | 0.3130 | 0.3200 | 0.7040 | 0.2570 | 0.1540 | 0.0760 |
| R16-8 | 16-14 AWG | 105C / 600 Volts | 0.1692 | 0.3346 | 0.3070 | 0.6692 | 0.1968 | 0.1614 | 0.0905 |
| R16-10 | 16-14 AWG | 105C / 600 Volts | 0.2086 | 0.3346 | 0.3070 | 0.6692 | 0.1968 | 0.1614 | 0.0905 |
| R16-14 | 16-14 AWG | 105C / 600 Volts | 0.2559 | 0.4724 | 0.4330 | 0.8661 | 0.1968 | 0.1614 | 0.0905 |
| R16-56 | 16-14 AWG | 105C / 600 Volts | 0.3140 | 0.4724 | 0.4200 | 0.8920 | 0.2570 | 0.1560 | 0.0830 |
| R16-38 | 16-14 AWG | 105C / 600 Volts | 0.4133 | 0.5354 | 0.5472 | 1.0118 | 0.1968 | 0.1614 | 0.0905 |
| R16-50 | 16-14 AWG | 105C / 600 Volts | 0.5010 | 0.7480 | 0.5940 | 1.1230 | 0.1880 | 0.1650 | 0.0830 |
| R12-6 | 12-10 AWG | 105C / 600 Volts | 0.1360 | 0.3740 | 0.3310 | 0.7660 | 0.2580 | 0.2200 | 0.1250 |
| R12-8 | 12-10 AWG | 105C / 600 Volts | 0.1640 | 0.3760 | 0.3540 | 0.7630 | 0.2550 | 0.2180 | 0.1300 |
| R12-10 | 12-10 AWG | 105C / 600 Volts | 0.1990 | 0.3720 | 0.3500 | 0.7400 | 0.2330 | 0.2200 | 0.1300 |
| R12-14 | 12-10 AWG | 105C / 600 Volts | 0.2559 | 0.4724 | 0.4133 | 0.8858 | 0.2362 | 0.2204 | 0.1338 |
| R12-56 | 12-10 AWG | 105C / 600 Volts | 0.3307 | 0.5905 | 0.5393 | 1.0708 | 0.2362 | 0.2204 | 0.1338 |
| R12-38 | 12-10 AWG | 105C / 600 Volts | 0.4133 | 0.5905 | 0.5393 | 1.0708 | 0.2362 | 0.2204 | 0.1338 |
| R12-50 | 12-10 AWG | 105C / 600 Volts | 0.5160 | 0.7550 | 0.6790 | 1.2840 | 0.2590 | 0.2190 | 0.1380 |
| R8-10 | 8 AWG | 105C / 600 Volts | 0.1930 | 0.4700 | 0.4070 | 0.9550 | 0.3330 | 0.2790 | 0.1810 |
| R8-14 | 8 AWG | 105C / 600 Volts | 0.2670 | 0.4570 | 0.4070 | 0.9560 | 0.3390 | 0.2820 | 0.1810 |
| R8-56 | 8 AWG | 105C / 600 Volts | 0.3240 | 0.4710 | 0.4200 | 0.9520 | 0.3350 | 0.2840 | 0.1810 |
| R8-38 | 8 AWG | 105C / 600 Volts | 0.3840 | 0.5900 | 0.4750 | 1.0830 | 0.3310 | 0.2800 | 0.1810 |
| R6-14 | 6 AWG | 105C / 600 Volts | 0.2550 | 0.6340 | 0.5550 | 1.2530 | 0.3910 | 0.3570 | 0.2520 |
| R6-56 | 6 AWG | 105C / 600 Volts | 0.3240 | 0.6350 | 0.5550 | 1.2430 | 0.3850 | 0.3580 | 0.2490 |
| R6-38 | 6 AWG | 105C / 600 Volts | 0.3870 | 0.6350 | 0.5550 | 1.2390 | 0.3850 | 0.3580 | 0.2490 |
| R6-50 | 6 AWG | 105C / 600 Volts | 0.5090 | 0.8270 | 0.6750 | 1.4340 | 0.3850 | 0.3580 | 0.2490 |
| R4-14 | 4 AWG | 105C / 600 Volts | 0.2590 | 0.4690 | 0.5740 | 1.2450 | 0.4520 | 0.4450 | 0.3000 |
| R4-56 | 4 AWG | 105C / 600 Volts | 0.3250 | 0.4760 | 0.5670 | 1.2500 | 0.4560 | 0.4470 | 0.3000 |
| R4-38 | 4 AWG | 105C / 600 Volts | 0.3880 | 0.6650 | 0.5670 | 1.3400 | 0.4480 | 0.4420 | 0.3000 |
| R4-50 | 4 AWG | 105C / 600 Volts | 0.5070 | 0.6650 | 0.5670 | 1.3270 | 0.4540 | 0.4420 | 0.3000 |
| R2-14 | 2 AWG | 105C / 600 Volts | 0.2650 | 0.6360 | 0.7550 | 1.5630 | 0.5270 | 0.5270 | 0.3720 |
| R2-56 | 2 AWG | 105C / 600 Volts | 0.3250 | 0.8680 | 0.7570 | 1.6730 | 0.5260 | 0.5230 | 0.3680 |
| R2-38 | 2 AWG | 105C / 600 Volts | 0.3870 | 0.6350 | 0.7850 | 1.5630 | 0.5260 | 0.5240 | 0.3710 |
| R2-50 | 2 AWG | 105C / 600 Volts | 0.5070 | 0.8680 | 0.7360 | 1.6770 | 0.5230 | 0.5250 | 0.3750 |

Non-Insulated Ring Terminals



Drawn - SD

Approved - KM

Material - Copper

Title - Non-Insulated Ring Terminals



| Part Number | Wire Range | Electrical Rating Max | d2 | B | F | L | E | D | d1 |
|-------------|------------|-----------------------|--------|--------|--------|--------|--------|--------|--------|
| R22-6 | 22-18 AWG | 105C / 600 Volts | 0.1400 | 0.3120 | 0.2950 | 0.7020 | 0.2560 | 0.1270 | 0.0620 |
| R22-8 | 22-18 AWG | 105C / 600 Volts | 0.1692 | 0.3149 | 0.2755 | 0.6299 | 0.1968 | 0.1338 | 0.0669 |
| R22-10 | 22-18 AWG | 105C / 600 Volts | 0.2086 | 0.3149 | 0.2755 | 0.6299 | 0.1968 | 0.1338 | 0.0669 |
| R22-14 | 22-18 AWG | 105C / 600 Volts | 0.2550 | 0.4660 | 0.4260 | 0.8940 | 0.2550 | 0.1290 | 0.0710 |
| R22-56 | 22-18 AWG | 105C / 600 Volts | 0.3230 | 0.4690 | 0.4350 | 0.8930 | 0.2580 | 0.1290 | 0.0710 |
| R22-38 | 22-18 AWG | 105C / 600 Volts | 0.3800 | 0.5350 | 0.5910 | 1.0970 | 0.2560 | 0.1290 | 0.0710 |
| R16-6 | 16-14 AWG | 105C / 600 Volts | 0.1380 | 0.3130 | 0.3200 | 0.7040 | 0.2570 | 0.1540 | 0.0760 |
| R16-8 | 16-14 AWG | 105C / 600 Volts | 0.1692 | 0.3346 | 0.3070 | 0.6692 | 0.1968 | 0.1614 | 0.0905 |
| R16-10 | 16-14 AWG | 105C / 600 Volts | 0.2086 | 0.3346 | 0.3070 | 0.6692 | 0.1968 | 0.1614 | 0.0905 |
| R16-14 | 16-14 AWG | 105C / 600 Volts | 0.2559 | 0.4724 | 0.4330 | 0.8661 | 0.1968 | 0.1614 | 0.0905 |
| R16-56 | 16-14 AWG | 105C / 600 Volts | 0.3140 | 0.4724 | 0.4200 | 0.8920 | 0.2570 | 0.1560 | 0.0830 |
| R16-38 | 16-14 AWG | 105C / 600 Volts | 0.4133 | 0.5354 | 0.5472 | 1.0118 | 0.1968 | 0.1614 | 0.0905 |
| R16-50 | 16-14 AWG | 105C / 600 Volts | 0.5010 | 0.7480 | 0.5940 | 1.1230 | 0.1880 | 0.1650 | 0.0830 |
| R12-6 | 12-10 AWG | 105C / 600 Volts | 0.1360 | 0.3740 | 0.3310 | 0.7660 | 0.2580 | 0.2200 | 0.1250 |
| R12-8 | 12-10 AWG | 105C / 600 Volts | 0.1640 | 0.3760 | 0.3540 | 0.7630 | 0.2550 | 0.2180 | 0.1300 |
| R12-10 | 12-10 AWG | 105C / 600 Volts | 0.1990 | 0.3720 | 0.3500 | 0.7400 | 0.2330 | 0.2200 | 0.1300 |
| R12-14 | 12-10 AWG | 105C / 600 Volts | 0.2559 | 0.4724 | 0.4133 | 0.8858 | 0.2362 | 0.2204 | 0.1338 |
| R12-56 | 12-10 AWG | 105C / 600 Volts | 0.3307 | 0.5905 | 0.5393 | 1.0708 | 0.2362 | 0.2204 | 0.1338 |
| R12-38 | 12-10 AWG | 105C / 600 Volts | 0.4133 | 0.5905 | 0.5393 | 1.0708 | 0.2362 | 0.2204 | 0.1338 |
| R12-50 | 12-10 AWG | 105C / 600 Volts | 0.5160 | 0.7550 | 0.6790 | 1.2840 | 0.2590 | 0.2190 | 0.1380 |
| R8-10 | 8 AWG | 105C / 600 Volts | 0.1930 | 0.4700 | 0.4070 | 0.9550 | 0.3330 | 0.2790 | 0.1810 |
| R8-14 | 8 AWG | 105C / 600 Volts | 0.2670 | 0.4570 | 0.4070 | 0.9560 | 0.3390 | 0.2820 | 0.1810 |
| R8-56 | 8 AWG | 105C / 600 Volts | 0.3240 | 0.4710 | 0.4200 | 0.9520 | 0.3350 | 0.2840 | 0.1810 |
| R8-38 | 8 AWG | 105C / 600 Volts | 0.3840 | 0.5900 | 0.4750 | 1.0830 | 0.3310 | 0.2800 | 0.1810 |
| R6-14 | 6 AWG | 105C / 600 Volts | 0.2550 | 0.6340 | 0.5550 | 1.2530 | 0.3910 | 0.3570 | 0.2520 |
| R6-56 | 6 AWG | 105C / 600 Volts | 0.3240 | 0.6350 | 0.5550 | 1.2430 | 0.3850 | 0.3580 | 0.2490 |
| R6-38 | 6 AWG | 105C / 600 Volts | 0.3870 | 0.6350 | 0.5550 | 1.2390 | 0.3850 | 0.3580 | 0.2490 |
| R6-50 | 6 AWG | 105C / 600 Volts | 0.5090 | 0.8270 | 0.6750 | 1.4340 | 0.3850 | 0.3580 | 0.2490 |
| R4-14 | 4 AWG | 105C / 600 Volts | 0.2590 | 0.4690 | 0.5740 | 1.2450 | 0.4520 | 0.4450 | 0.3000 |
| R4-56 | 4 AWG | 105C / 600 Volts | 0.3250 | 0.4760 | 0.5670 | 1.2500 | 0.4560 | 0.4470 | 0.3000 |
| R4-38 | 4 AWG | 105C / 600 Volts | 0.3880 | 0.6650 | 0.5670 | 1.3400 | 0.4480 | 0.4420 | 0.3000 |
| R4-50 | 4 AWG | 105C / 600 Volts | 0.5070 | 0.6650 | 0.5670 | 1.3270 | 0.4540 | 0.4420 | 0.3000 |
| R2-14 | 2 AWG | 105C / 600 Volts | 0.2650 | 0.6360 | 0.7550 | 1.5630 | 0.5270 | 0.5270 | 0.3720 |
| R2-56 | 2 AWG | 105C / 600 Volts | 0.3250 | 0.8680 | 0.7570 | 1.6730 | 0.5260 | 0.5230 | 0.3680 |
| R2-38 | 2 AWG | 105C / 600 Volts | 0.3870 | 0.6350 | 0.7850 | 1.5630 | 0.5260 | 0.5240 | 0.3710 |
| R2-50 | 2 AWG | 105C / 600 Volts | 0.5070 | 0.8680 | 0.7360 | 1.6770 | 0.5230 | 0.5250 | 0.3750 |