

NEW
more on
reverse

Entrance Caps for Rigid, IMC, EMT and PVC

New Sizes and a Combo Style That Saves \$\$\$!



4"
PVC109
Includes
adapter sleeves
for 3-1/2"
and 3"
conduit

NEW!
SAVE \$\$\$

Catalog Number	UPC/DEI/NAED Mfg. #018997	Trade Size	Clamp-on Entrance Cap for Rigid, IMC, EMT, PVC
PVC106	12512	2-1/2	
PVC109	12513	3, 3-1/2, 4	Combo style w/ adapter sleeves for 3" and 3-1/2"

See reverse for Arlington's complete line of entrance caps.

Whatever your entrance cap needs, Arlington has one that fits the bill.

We have two new sizes in our line of PVC Entrance Caps! In addition to the 1/2" to 2" trade sizes, we now offer a 2-1/2" cap and the **combo 3" • 3-1/2" • 4"**.

As for clamp-on styles, we offer 1/2" to 4" caps to fit rigid, EMT and PVC.

PVC109, our new **combo style** is the same size as a 3" to 4" metal entrance cap, but it costs the same as a 3" PVC cap. **It saves money and the hassle of stocking extra inventory**

because it works on three conduit sizes – 3", 3-1/2" and 4".

Priced as a 3", the (supplied) adapter sleeves allow the 4" size to fit a 3" or 3-1/2" conduit.



1 Stauffer Industrial Park
Scranton, PA 18517
800/233.4717
Fax 570/562.0646
www.aifittings.com

Entrance Caps for Rigid, IMC, EMT and PVC

Arlington has an Entrance Cap to fit your needs.

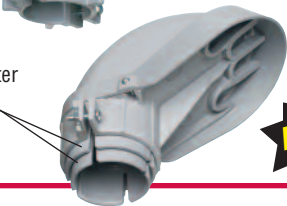
PVC100
thru
PVC104



PVC105
PVC106
PVC129



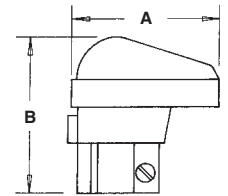
PVC109
w/ adapter
sleeves



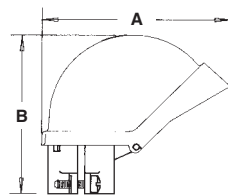
NEW!

PVC for rigid • IMC • EMT • Rigid PVC. 1/2" to 2" sizes include adapter sleeve for EMT.

CATALOG NUMBER	UPC/DCI/NAED MFG #01 8997	TRADE SIZE	STD PKG	DIM A	DIM B
PVC100	73100	1/2	25	2.625	2.900
PVC101	73101	3/4	25	3.340	3.150
PVC102	73102	1	20	3.340	3.360
PVC103	73103	1-1/4	10	4.125	3.530
PVC104	73104	1-1/2	10	4.145	3.530
PVC105	73105	2	5	7.790	6.660
PVC106	12512	2-1/2	1	9.790	7.620
PVC109	12513	3, 3-1/2, 4	1	12.650	9.070
PVC129	73129	2-1/2 Mast	1	7.750	6.660

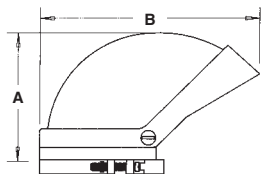


PVC100 - PVC104



PVC105 - PVC129

Clamp-on Style for rigid • IMC • EMT

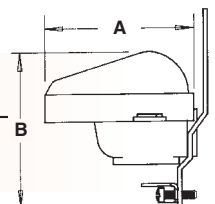


CATALOG NUMBER	UPC/DCI/NAED MFG #01 8997	TRADE SIZE	UNIT PKG	STD PKG	DIM A	DIM B	HOLE SIZES
140	00140	1/2	10	10	2.60	2.68	(4).30
141	00141	3/4	10	10	2.72	3.80	(2).38 (3).40
142	00142	1	10	10	3.11	3.32	(2).44 (3).50
143	00143	1-1/4	5	25	3.20	4.46	(2).42 (3).63
144	00144	1-1/2	3	15	4.34	4.85	(2).60 (3).75
145	00145	2	10	10	4.55	6.62	(2).75 (3)1.00 (1).53
146	00146	2-1/2	1	1	7.80	9.74	(3)1.31 (3).87 (1).99
147	00147	3	1	1	8.00	10.50	(3)1.31 (3).87 (1).99
148	00148	3-1/2	1	1	9.25	12.50	(3)1.73 (4)1.10
149	00149	4	1	1	9.25	12.50	(3)1.73 (4)1.10

PVC Entrance Caps with galvanized steel strap



CATALOG NUMBER	UPC/DCI/NAED MFG #01 8997	TRADE SIZE	STD PKG	DIM A	DIM B	HOLE SIZES
PVC660	73660	(3) 3, 6, 4, 2	50	2.700	2.520	(2).53
PVC662	73662	(3) 1/0 to (3) 4/0	10	4.125	3.750	(2).69



Arlington

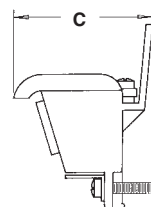
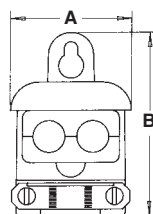
1 Stauffer Industrial Park
Scranton, PA 18517
800/233.4717
Fax 570/562.0646
www.aifittings.com

Service Entrance Cable Caps Zinc Diecast

CATALOG NUMBER	UPC/DCI/NAED MFG #01 8997	TRADE SIZE	STD PKG	DIM A	DIM B	DIM C	HOLE SIZES
660	00660	7/8" dia. max.	50	2.060	2.970	2.260	(2).58
662	00662	1/0 to 4/0	10	3.180	4.520	3.600	(2).80



660



Distributed by

