

FEATURES & SPECIFICATIONS

INTENDED USE — Designed for use in open area applications and electronic offices where optical control, visual comfort and light cut-off are important.

Attributes: Design optimized for use with T8 lamps and low-profile electronic ballasts.

Aluminum louvers utilize the latest developments in louver finishing for minimized louver iridescence.

CONSTRUCTION — Black reveal provides floating louver appearance, conceals optional air-supply slots.

Square corner end plates improve strength and durability.

Integral T-bar safety clips hold fixture to T-bar securely; no fasteners required.

Heavy-gauge hinges die-formed for maximum strength; spring action latches concealed in black reveal.

Housing formed from cold-rolled steel. Louver formed from anodized aluminum. No asbestos used in this product.

Finish: Five-stage iron-phosphate pretreatment ensures superior paint adhesion. Painted parts finished with high-gloss, baked white enamel.

ELECTRICAL — Electronic ballasts are sound rated A. Full light output, reduced energy. Less than 10% THD multi-volt operation (120-277).

Fixture conforms to UL1570 and is suitable for damp locations. AWM, TFN or THHN wire used throughout, rated for required temperatures.

LISTINGS — UL Listed (Standard).

WARRANTY — 2-year limited warranty. Complete warranty terms located at www.acuitybrands.com/CustomerResources/Terms_and_conditions.aspx

NOTE: Actual performance may differ as a result of end-user environment and application. Specifications subject to change without notice.

Catalog Number
Notes
Type

Contractor Select

Parabolics



Specifications PT2U 2x2: 9-cell

Length: 24 (61.0)
 Width: 24 (61.0)
 Depth: 4-1/2 (11.4)
 Weight: 15 lbs (6.8 kg)

Specifications PT3 2x4: 18-cell

Length: 48 (122.0)
 Width: 24 (61.0)
 Depth: 4-1/2 (11.4)
 Weight: 32 lbs (14.5 kg)

All dimensions are inches (centimeters) unless otherwise indicated.

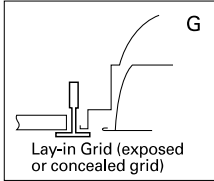
ORDERING INFORMATION

Catalog Number	UPC	Description	# of Lamps	# of Cells	Wattage	Voltage	Ballast type	# of Ballasts	Lamp type	Pre-wired	Lamp included	Pallet qty.
PT3 MV	745975079155	2x4 recessed, static	3	18	32	120-277	Electronic, instant start	1	N/A	N	N	20
PT3L MV	745975079421	2x4 recessed, static	3	18	32	120-277	Electronic, instant start	1	3500 K	N	Y	20
PT3LW MV	745975079360	2x4 recessed, static	3	18	32	120-277	Electronic, instant start	1	3500 K	Y	Y	20
PT3 2MV	745975118373	2x4 recessed, static	3	18	32	120-277	Electronic, instant start	2	N/A	N	N	20
PT3A MV	745975079513	2x4 recessed, air	3	18	32	120-277	Electronic, instant start	1	N/A	N	N	20
PT2U MV	745975079247	2x2 recessed, static	2	9	32-U lamp	120-277	Electronic, instant start	1	N/A	N	N	40
PT2UA MV	745975490417	2x2 recessed, air	2	9	32-U lamp	120-277	Electronic, instant start	1	N/A	N	N	40
PT2UALW MV	745975466580	2x2 recessed, air	2	9	32-U lamp	120-277	Electronic, instant start	1	3500 K	Y	Y	40
PT3L41 MV	745976877781	2x4 recessed, static	3	18	32	120-277	Electronic, instant start	1	4100 K	N	Y	20
PT3L41W MV	745975728473	2x4 recessed, static	3	18	32	120-277	Electronic, instant start	1	4100 K	Y	Y	20
PT3ALW MV	745975466528	2x4 recessed, air	3	18	32	120-277	Electronic, instant start	1	3500 K	N	Y	20

Parabolics 2'x4' and 2'x2'

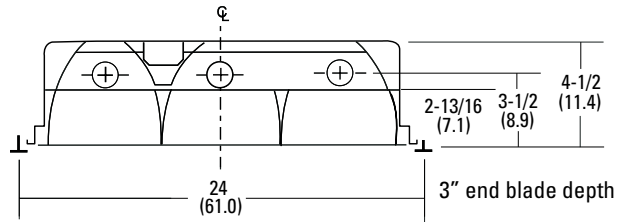
MOUNTING DATA

Ceiling Type	Appropriate Trim Type
Exposed grid tee	G
Concealed grid tee	G, ST



DIMENSIONS

All dimensions are inches (centimeters) unless otherwise indicated.



PHOTOMETRICS

Calculated using the zonal cavity method in accordance with IESNA LM41 procedures. Floor reflectances are 20%. Lamp configurations shown are typical. Full photometric data on these and other configurations available upon request.

TEST NO: LTL14671 CS

PT3 MV

LUMENS PER LAMP: 2850 LUM. EFF. - 75.1%

LAMPS PER LUMINAIRE: 3

RCR	pf	Coefficients of Utilization								
		20%								
		80%			70%			50%		
pc	50%	30%	10%	50%	30%	10%	50%	30%	10%	
pw										
0	89	89	89	87	87	87	83	83	83	
1	80	78	75	79	76	74	76	74	72	
2	71	67	63	70	66	63	67	64	61	
3	64	58	54	62	57	53	60	56	53	
4	57	51	46	56	50	46	54	49	45	
5	51	45	40	50	44	40	49	44	40	
6	46	40	35	45	39	35	44	39	35	
7	42	36	31	41	35	31	40	35	31	
8	38	32	28	38	32	28	37	31	28	
9	35	29	25	34	29	25	34	28	25	
10	32	26	23	32	26	23	31	26	22	

Zonal Lumen Summary

Zone	Lumens	% Lamp	% Fixture
0° - 30°	1982.1	23.2	30.9
0° - 40°	3413.2	39.9	53.1
0° - 60°	5866.8	68.6	91.4
0° - 90°	6422.1	75.1	100.0
90° - 180°	0.0	0.0	0.0
0° - 180°	6422.1	75.1	100.0

FEATURES & SPECIFICATIONS

INTENDED USE — Designed for use in open area applications and electronic offices where optical control, visual comfort and light cut-off are important.

Attributes: Design optimized for use with T8 lamps and low-profile electronic ballasts.

Aluminum louvers utilize the latest developments in louver finishing for minimized louver iridescence.

CONSTRUCTION — Black reveal provides floating louver appearance, conceals optional air-supply slots.

Square corner end plates improve strength and durability.

Integral T-bar safety clips hold fixture to T-bar securely; no fasteners required.

Heavy-gauge hinges die-formed for maximum strength; spring action latches concealed in black reveal.

Housing formed from cold-rolled steel. Louver formed from anodized aluminum. No asbestos used in this product.

Finish: Five-stage iron-phosphate pretreatment ensures superior paint adhesion. Painted parts finished with high-gloss, baked white enamel.

ELECTRICAL — Electronic ballasts are sound rated A. Full light output, reduced energy. Less than 10% THD multi-volt operation (120-277).

Fixture conforms to UL1570 and is suitable for damp locations. AWM, TFN or THHN wire used throughout, rated for required temperatures.

LISTINGS — UL Listed (Standard).

WARRANTY — 2-year limited warranty. Complete warranty terms located at

www.acuitybrands.com/CustomerResources/Terms_and_conditions.aspx

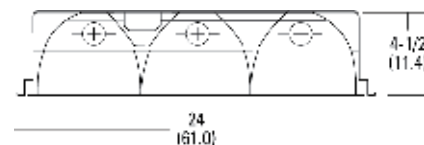
NOTE: Actual performance may differ as a result of end-user environment and application.

Specifications subject to change without notice.

Catalog Number
Notes
Type

Contractor Select

Parabolics



Specifications PT2U 2x2: 9-cell

Length: 24 (61.0)

Width: 24 (61.0)

Depth: 4-1/2 (11.4)

Weight: 15 lbs (6.8 kg)

Specifications PT3 2x4: 18-cell

Length: 48 (122.0)

Width: 24 (61.0)

Depth: 4-1/2 (11.4)

Weight: 32 lbs (14.5 kg)

All dimensions are inches (centimeters) unless otherwise indicated.

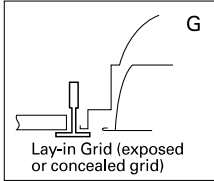
ORDERING INFORMATION

Catalog Number	UPC	Description	# of Lamps	# of Cells	Wattage	Voltage	Ballast type	# of Ballasts	Lamp type	Pre-wired	Lamp included	Pallet qty.
PT3 MV	745975079155	2x4 recessed, static	3	18	32	120-277	Electronic, instant start	1	N/A	N	N	20
PT3L MV	745975079421	2x4 recessed, static	3	18	32	120-277	Electronic, instant start	1	3500 K	N	Y	20
PT3LW MV	745975079360	2x4 recessed, static	3	18	32	120-277	Electronic, instant start	1	3500 K	Y	Y	20
PT3 2MV	745975118373	2x4 recessed, static	3	18	32	120-277	Electronic, instant start	2	N/A	N	N	20
PT3A MV	745975079513	2x4 recessed, air	3	18	32	120-277	Electronic, instant start	1	N/A	N	N	20
PT2U MV	745975079247	2x2 recessed, static	2	9	32-U lamp	120-277	Electronic, instant start	1	N/A	N	N	40
PT2UA MV	745975490417	2x2 recessed, air	2	9	32-U lamp	120-277	Electronic, instant start	1	N/A	N	N	40
PT2UALW MV	745975466580	2x2 recessed, air	2	9	32-U lamp	120-277	Electronic, instant start	1	3500 K	Y	Y	40
PT3L41 MV	745976877781	2x4 recessed, static	3	18	32	120-277	Electronic, instant start	1	4100 K	N	Y	20
PT3L41W MV	745975728473	2x4 recessed, static	3	18	32	120-277	Electronic, instant start	1	4100 K	Y	Y	20
PT3ALW MV	745975466528	2x4 recessed, air	3	18	32	120-277	Electronic, instant start	1	3500 K	N	Y	20

Parabolics 2'x4' and 2'x2'

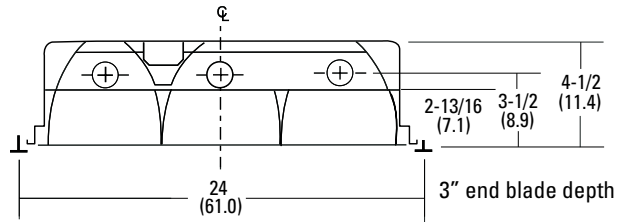
MOUNTING DATA

Ceiling Type	Appropriate Trim Type
Exposed grid tee	G
Concealed grid tee	G, ST



DIMENSIONS

All dimensions are inches (centimeters) unless otherwise indicated.



PHOTOMETRICS

Calculated using the zonal cavity method in accordance with IESNA LM41 procedures. Floor reflectances are 20%. Lamp configurations shown are typical. Full photometric data on these and other configurations available upon request.

TEST NO: LTL14671 CS

PT3 MV

LUMENS PER LAMP: 2850 LUM. EFF. - 75.1%

LAMPS PER LUMINAIRE: 3

RCR	pf	Coefficients of Utilization								
		20%								
		80%			70%			50%		
pc	50%	30%	10%	50%	30%	10%	50%	30%	10%	
pw										
0	89	89	89	87	87	87	83	83	83	
1	80	78	75	79	76	74	76	74	72	
2	71	67	63	70	66	63	67	64	61	
3	64	58	54	62	57	53	60	56	53	
4	57	51	46	56	50	46	54	49	45	
5	51	45	40	50	44	40	49	44	40	
6	46	40	35	45	39	35	44	39	35	
7	42	36	31	41	35	31	40	35	31	
8	38	32	28	38	32	28	37	31	28	
9	35	29	25	34	29	25	34	28	25	
10	32	26	23	32	26	23	31	26	22	

Zonal Lumen Summary

Zone	Lumens	% Lamp	% Fixture
0° - 30°	1982.1	23.2	30.9
0° - 40°	3413.2	39.9	53.1
0° - 60°	5866.8	68.6	91.4
0° - 90°	6422.1	75.1	100.0
90° - 180°	0.0	0.0	0.0
0° - 180°	6422.1	75.1	100.0