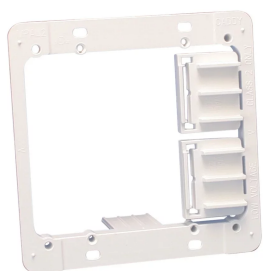




## PLASTIC LOW VOLTAGE MOUNTING PLATE, 2 GANG

### CATALOG NUMBER

**MPAL2**



### CERTIFICATIONS



### FEATURES

No sharp metal edges with plastic design

Fast, easy way to install

No installation tools required to secure bracket in the drywall opening

Serrated interlocking system secures tightly

Template points on brackets help eliminate multiple measurement markings during installation

Recessed design helps assure flush mount of device

Eliminates the need for electrical boxes on low voltage class 2 applications

### PRODUCT ATTRIBUTES

Material: Acrylonitrile Butadiene Styrene

Finish: Plain

Gang: 2

Drywall Thickness: 1/4" - 1 1/4"

## ADDITIONAL PRODUCT DETAILS

---

No load rating, for positioning only.

For low voltage Class 2 use only.

## WARNING

---

nVent products shall be installed and used only as indicated in nVent's product instruction sheets and training materials. Instruction sheets are available at [www.nvent.com](http://www.nvent.com) and from your nVent customer service representative. Improper installation, misuse, misapplication or other failure to completely follow nVent's instructions and warnings may cause product malfunction, property damage, serious bodily injury and death and/or void your warranty.

### North America

+1.800.753.9221

Option 1 – Customer Care

Option 2 – Technical Support

### Europe

Netherlands:

+31 800-0200135

France:

+33 800 901 793

### Europe

Germany:

800 1890272

Other Countries:

+31 13 5835404

### APAC

Shanghai:

+ 86 21 2412 1618/19

Sydney:

+61 2 9751 8500



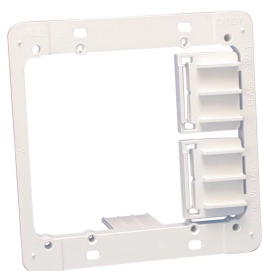
Our powerful portfolio of brands:  
**nVent.com CADDY ERICO HOFFMAN RAYCHEM SCHROFF**  
**TRACER**



## PLASTIC LOW VOLTAGE MOUNTING PLATE, 2 GANG

### CATALOG NUMBER

**MPAL2**



### CERTIFICATIONS



### FEATURES

No sharp metal edges with plastic design

Fast, easy way to install

No installation tools required to secure bracket in the drywall opening

Serrated interlocking system secures tightly

Template points on brackets help eliminate multiple measurement markings during installation

Recessed design helps assure flush mount of device

Eliminates the need for electrical boxes on low voltage class 2 applications

### PRODUCT ATTRIBUTES

Material: Acrylonitrile Butadiene Styrene

Finish: Plain

Gang: 2

Drywall Thickness: 1/4" - 1 1/4"

## ADDITIONAL PRODUCT DETAILS

---

No load rating, for positioning only.

For low voltage Class 2 use only.

## WARNING

---

nVent products shall be installed and used only as indicated in nVent's product instruction sheets and training materials. Instruction sheets are available at [www.nvent.com](http://www.nvent.com) and from your nVent customer service representative. Improper installation, misuse, misapplication or other failure to completely follow nVent's instructions and warnings may cause product malfunction, property damage, serious bodily injury and death and/or void your warranty.

### North America

+1.800.753.9221

Option 1 – Customer Care

Option 2 – Technical Support

### Europe

Netherlands:

+31 800-0200135

France:

+33 800 901 793

### Europe

Germany:

800 1890272

Other Countries:

+31 13 5835404

### APAC

Shanghai:

+ 86 21 2412 1618/19

Sydney:

+61 2 9751 8500



Our powerful portfolio of brands:  
**nVent.com CADDY ERICO HOFFMAN RAYCHEM SCHROFF**  
**TRACER**