

New Sizes!
on
reverse

Low Voltage Mounting Brackets

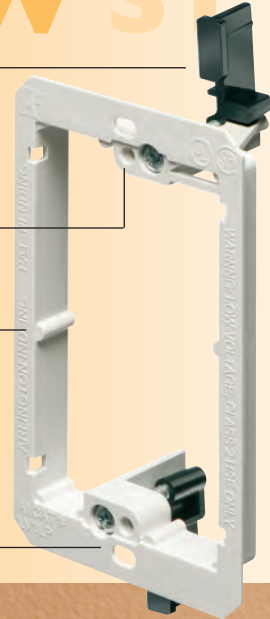
For Low Voltage Class 2 wiring in *EXISTING CONSTRUCTION*

NEW STYLES!

Wings
hold bracket secure when mounting screws are tightened

Recessed Screw Hole and Thin Front Lip
seat wall plate flush with wall surface

Oval Hole
allows final shifting, straightening of device



LV1LP
Low profile Low voltage mounting bracket

Designed for use with 1/2" or 5/8" drywall installed on furring strips attached to concrete walls.

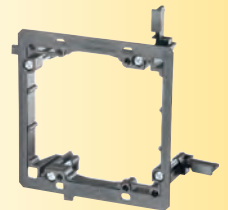
Arlington's non-metallic, Low Voltage Mounting Brackets are the time- and money-saving solution for faster and easier mounting of Class 2 communications, computer and cable TV wiring.

Designed to mount wall plates flush, our mounting brackets have features that deliver a better-looking, easy to install job; specially designed screw holes, thin front lip and more.

- Brackets adjust to fit various wall board thicknesses
- Bracket is its own template for cut out
- Horizontal or vertical mounting
- They install faster, cost less than metal brackets
- UL/CSA Listed

NEW! Low profile, single- and two-gang mounting bracket for use with drywall installed on furring strips attached to concrete walls... and a heavy-duty, two-gang mounting bracket with four mounting wings for support in each corner.

2-gang w/ four mounting wings
LV2HD



NEW!

LV2LP
Low profile Two-gang



Arlington

1 Stauffer Industrial Park
Scranton, PA 18517
800/233.4717
Fax 570/562.0646
www.aifittings.com

Patented

Low Voltage Mounting Brackets

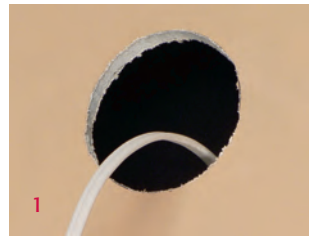
Easy Installation of Low Voltage Smoke Detectors and More!

LVR1

- Adjusts to fit 1/4" to 1-1/2" wall or ceiling thickness.
- Bracket is its own template for cut out. Trace hole along the inside diameter of the bracket. Cut along the outside of the line.
- UL/CSA Listed.

Fast and Easy Installation of a Low Voltage Smoke Detector

- 1 Trace bracket, then cut hole. Pull wires.
- 2 Insert bracket into opening.
- 3 Tighten three screws to set LVR1 wings securely against drywall.
- 4 Attach low voltage smoke detector to LVR1 through screw holes in the mounting plate.
- 5 Attach smoke detector cover.



Vertical or Horizontal Mounting

Try all of our low voltage mounting brackets...

Our Low Voltage Mounting Brackets install faster than metal – cost less too!

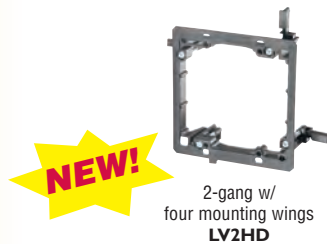
Catalog Number	UPC/DEI/NAED Mfg. #018997	Description	Adjusts to Fit Wall Thickness	Unit Pkg	Std Pkg
LV1LP	58177	Low profile, single-gang	1/2" to 5/8"	10	100
LV2LP	23102	Low profile, two-gang	1/2" to 5/8"	5	50
LV1	58175	Single-gang	1/4" to 1"	10	100
LV2	10952	Two-gang	1/4" to 1"	5	50
LV2HD	20010	Two-gang (four mounting wings)	1/4" to 1"	5	25
LV3	09600	Three-gang	1/4" to 1"	5	50
LV4	09601	Four-gang	1/4" to 1"	5	50
LVR1	58185	Round	1/4" to 1-1/2"	---	25



NEW!



Arlington
 1 Stauffer Industrial Park
 Scranton, PA 18517
800/233.4717
Fax 570/562.0646
www.aifittings.com



NEW!

Distributed by

New Sizes!
on
reverse

Low Voltage Mounting Brackets

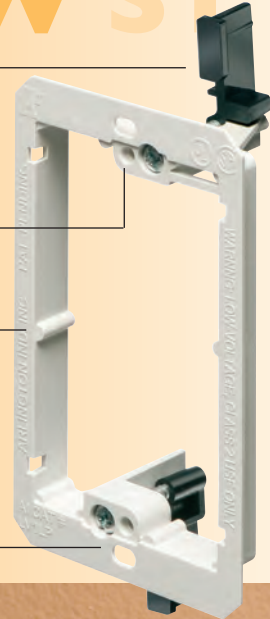
For Low Voltage Class 2 wiring in *EXISTING CONSTRUCTION*

NEW STYLES!

Wings
hold bracket secure
when mounting
screws are tightened

**Recessed
Screw Hole**
and
**Thin
Front Lip**
seat wall plate
flush with wall
surface

Oval Hole
allows final shifting,
straightening of device



LV1LP
Low profile
Low voltage
mounting
bracket

Designed for use with 1/2" or 5/8" drywall installed on furring strips attached to concrete walls.

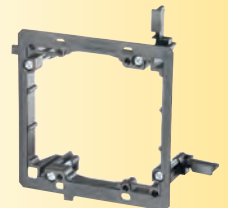
Arlington's non-metallic, Low Voltage Mounting Brackets are the time- and money-saving solution for faster and easier mounting of Class 2 communications, computer and cable TV wiring.

Designed to mount wall plates flush, our mounting brackets have features that deliver a better-looking, easy to install job; specially designed screw holes, thin front lip and more.

- Brackets adjust to fit various wall board thicknesses
- Bracket is its own template for cut out
- Horizontal or vertical mounting
- They install faster, cost less than metal brackets
- UL/CSA Listed

NEW! Low profile, single- and two-gang mounting bracket for use with drywall installed on furring strips attached to concrete walls... and a heavy-duty, two-gang mounting bracket with four mounting wings for support in each corner.

2-gang w/
four mounting
wings
LV2HD



NEW!

LV2LP
Low profile
Two-gang



Arlington

1 Stauffer Industrial Park
Scranton, PA 18517
800/233.4717
Fax 570/562.0646
www.aifittings.com

Patented

Low Voltage Mounting Brackets

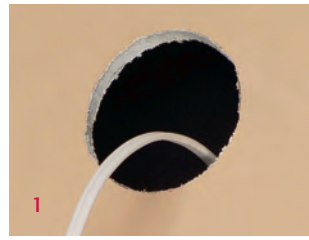
Easy Installation of Low Voltage Smoke Detectors and More!

LVR1

- Adjusts to fit 1/4" to 1-1/2" wall or ceiling thickness.
- Bracket is its own template for cut out. Trace hole along the inside diameter of the bracket. Cut along the outside of the line.
- UL/CSA Listed.

Fast and Easy Installation of a Low Voltage Smoke Detector

- 1 Trace bracket, then cut hole. Pull wires.
- 2 Insert bracket into opening.
- 3 Tighten three screws to set LVR1 wings securely against drywall.
- 4 Attach low voltage smoke detector to LVR1 through screw holes in the mounting plate.
- 5 Attach smoke detector cover.



Vertical or Horizontal Mounting

Try all of our low voltage mounting brackets...

Our Low Voltage Mounting Brackets install faster than metal – cost less too!

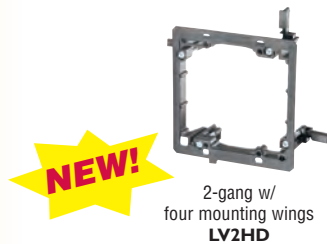
Catalog Number	UPC/DEI/NAED Mfg. #018997	Description	Adjusts to Fit Wall Thickness	Unit Pkg	Std Pkg
LV1LP	58177	Low profile, single-gang	1/2" to 5/8"	10	100
LV2LP	23102	Low profile, two-gang	1/2" to 5/8"	5	50
LV1	58175	Single-gang	1/4" to 1"	10	100
LV2	10952	Two-gang	1/4" to 1"	5	50
LV2HD	20010	Two-gang (four mounting wings)	1/4" to 1"	5	25
LV3	09600	Three-gang	1/4" to 1"	5	50
LV4	09601	Four-gang	1/4" to 1"	5	50
LVR1	58185	Round	1/4" to 1-1/2"	---	25



NEW!



Arlington
 1 Stauffer Industrial Park
 Scranton, PA 18517
800/233.4717
Fax 570/562.0646
www.aifittings.com



Distributed by