

# CONNECTORS

## Compression Connectors

### Long Barrel One Hole Copper Lugs L Series Cont'd

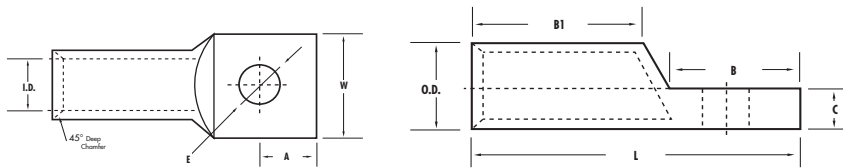


#### FEATURES

- Produced from high conductivity copper tubing.
- Tin-plated to provide corrosion low contact resistance.
- Marked with die index and color coded.
- Listed for 35KV max when properly installed and to cable manufacturer instructions.
- For applications greater than 2000V, consult the cable Manufacturer voltage stress relief instructions.
- **Part Numbers ending in "P" have a "peep" or sight inspection hole.**

#### SPECIFICATIONS

- UL486A Listed Wire Connector.
- UL467 Grounding & Bonding (Sizes 8 AWG - 3/0 AWG).
- Max ampacity is based on NEC 310.15, insulation type, and conductor material. Please consult your current NEC manual.
- \* CLASS B OR C BUILDING WIRE CU CABLE ONLY.
- Temperature Rating: 90 °C.
- Voltage: 600V



**\*EXPANDED WIRE RANGE** when installed with NSI N121D dieless compression tool.  
UL Listed with other tools:  
**FOR TOOL/DIE CRIMPING INFORMATION, PLEASE SEE TABLE ON PAGE 87**

CAT. NO.	WIRE RANGE	EXPANDED WIRE RANGE**	BOLT SIZE (IN.)	BARREL I.D.	BARREL O.D.	LENGTH (L) (IN.)	WIDTH (W) (IN.)	A (IN.)	B (IN.)	B1 (IN.)	C (IN.)	E (IN.)	COLOR	STD. CTN. QTY.
L2048P	2/0 AWG	2/0 - 4 AWG	1/2"	0.441	0.563	2.677	0.815	0.472	1.063	1.378	0.118	0.512	Black	25
L3014	3/0 AWG	3/0 - 2 AWG	1/4"	0.492	0.622	2.795	0.902	0.472	1.063	1.378	0.126	0.252	Orange	25
L3014P	3/0 AWG	3/0 - 2 AWG	1/4"	0.492	0.622	2.795	0.902	0.472	1.063	1.378	0.126	0.252	Orange	25
L3038	3/0 AWG	3/0 - 2 AWG	3/8"	0.492	0.622	2.795	0.902	0.472	1.063	1.378	0.126	0.413	Orange	25
L3038P	3/0 AWG	3/0 - 2 AWG	3/8"	0.492	0.622	2.795	0.902	0.472	1.063	1.378	0.126	0.413	Orange	25
L3048	3/0 AWG	3/0 - 2 AWG	1/2"	0.492	0.622	2.795	0.902	0.472	1.063	1.378	0.126	0.512	Orange	25
L3048P	3/0 AWG	3/0 - 2 AWG	1/2"	0.492	0.622	2.795	0.902	0.472	1.063	1.378	0.126	0.512	Orange	25
L4014	4/0 AWG	4/0 - 1 AWG	1/4"	0.547	0.689	2.795	1.000	0.520	1.063	1.417	0.134	0.252	Purple	25
L4014P	4/0 AWG	4/0 - 1 AWG	1/4"	0.547	0.689	2.795	1.000	0.520	1.063	1.417	0.134	0.252	Purple	25
L4038	4/0 AWG	4/0 - 1 AWG	3/8"	0.547	0.689	2.795	1.000	0.520	1.063	1.417	0.134	0.413	Purple	25
L4038P	4/0 AWG	4/0 - 1 AWG	3/8"	0.547	0.689	2.795	1.000	0.520	1.063	1.417	0.134	0.413	Purple	25
L4048	4/0 AWG	4/0 - 1 AWG	1/2"	0.547	0.689	2.795	1.000	0.520	1.063	1.417	0.134	0.512	Purple	25
L4048P	4/0 AWG	4/0 - 1 AWG	1/2"	0.547	0.689	2.795	1.000	0.520	1.063	1.417	0.134	0.512	Purple	25
L25048	250 MCM	250 MCM - 1/0 AWG	1/2"	0.594	0.752	3.031	1.091	0.520	1.063	1.614	0.150	0.512	Yellow	25
L30048	300 MCM	300 MCM - 2/0 AWG	1/2"	0.657	0.815	3.386	1.189	0.520	1.063	1.969	0.150	0.512	White	12
L35048	350 MCM	350 MCM - 3/0 AWG	1/2"	0.701	0.874	3.465	1.276	0.520	1.063	1.969	0.165	0.512	Red	12
L40048	400 MCM	400 MCM - 4/0 AWG	1/2"	0.764	0.949	3.858	1.386	0.512	1.378	1.969	0.177	0.512	Blue	6
L50048	500 MCM	500 - 250 MCM	1/2"	0.835	1.063	4.134	1.539	0.512	1.378	2.244	0.217	0.512	Brown	6
L50058	500 MCM	500 - 250 MCM	5/8"	0.835	1.063	4.134	1.539	0.512	1.378	2.244	0.217	0.669	Brown	6
L60058	600 MCM	600 - 250 MCM	5/8"	0.925	1.189	4.252	1.717	0.689	1.457	2.244	0.252	0.669	Green	6
L75048	750 MCM	750 - 500 MCM	1/2"	1.031	1.311	5.157	1.902	0.689	1.850	2.638	0.268	0.512	Black	3
L75058	750 MCM	750 - 500 MCM	5/8"	1.031	1.311	5.157	1.902	0.689	1.850	2.638	0.268	0.669	Black	3
L10058	1000 MCM	-	5/8"	1.184	1.494	5.613	2.148	0.866	1.776	2.603	0.328	0.663	White	3

# CONNECTORS

## Compression Connectors

### Long Barrel One Hole Copper Lugs L Series Cont'd

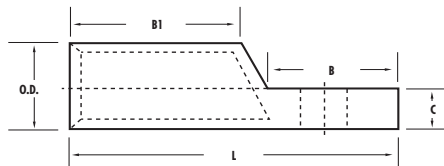
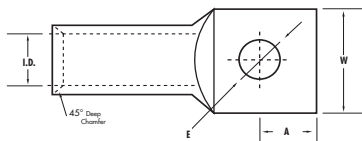


#### FEATURES

- Produced from high conductivity copper tubing.
- Tin-plated to provide corrosion low contact resistance.
- Marked with die index and color coded.
- Listed for 35KV max when properly installed and to cable manufacturer instructions.
- For applications greater than 2000V, consult the cable Manufacturer voltage stress relief instructions.
- **Part Numbers ending in "P" have a "peep" or sight inspection hole.**

#### SPECIFICATIONS

- UL486A Listed Wire Connector.
- UL467 Grounding & Bonding (Sizes 8 AWG - 3/0 AWG).
- Max ampacity is based on NEC 310.15, insulation type, and conductor material. Please consult your current NEC manual.
- \* CLASS B OR C BUILDING WIRE CU CABLE ONLY.
- Temperature Rating: 90 °C.
- Voltage: 600V



**\*EXPANDED WIRE RANGE** when installed with NSI N121D dieless compression tool.  
UL Listed with other tools:  
**FOR TOOL/DIE CRIMPING INFORMATION, PLEASE SEE TABLE ON PAGE 87**

CAT. NO.	WIRE RANGE	EXPANDED WIRE RANGE**	BOLT SIZE (IN.)	BARREL I.D.	BARREL O.D.	LENGTH (L) (IN.)	WIDTH (W) (IN.)	A (IN.)	B (IN.)	B1 (IN.)	C (IN.)	E (IN.)	COLOR	STD. CTN. QTY.
L2048P	2/0 AWG	2/0 - 4 AWG	1/2"	0.441	0.563	2.677	0.815	0.472	1.063	1.378	0.118	0.512	Black	25
L3014	3/0 AWG	3/0 - 2 AWG	1/4"	0.492	0.622	2.795	0.902	0.472	1.063	1.378	0.126	0.252	Orange	25
L3014P	3/0 AWG	3/0 - 2 AWG	1/4"	0.492	0.622	2.795	0.902	0.472	1.063	1.378	0.126	0.252	Orange	25
L3038	3/0 AWG	3/0 - 2 AWG	3/8"	0.492	0.622	2.795	0.902	0.472	1.063	1.378	0.126	0.413	Orange	25
L3038P	3/0 AWG	3/0 - 2 AWG	3/8"	0.492	0.622	2.795	0.902	0.472	1.063	1.378	0.126	0.413	Orange	25
L3048	3/0 AWG	3/0 - 2 AWG	1/2"	0.492	0.622	2.795	0.902	0.472	1.063	1.378	0.126	0.512	Orange	25
L3048P	3/0 AWG	3/0 - 2 AWG	1/2"	0.492	0.622	2.795	0.902	0.472	1.063	1.378	0.126	0.512	Orange	25
L4014	4/0 AWG	4/0 - 1 AWG	1/4"	0.547	0.689	2.795	1.000	0.520	1.063	1.417	0.134	0.252	Purple	25
L4014P	4/0 AWG	4/0 - 1 AWG	1/4"	0.547	0.689	2.795	1.000	0.520	1.063	1.417	0.134	0.252	Purple	25
L4038	4/0 AWG	4/0 - 1 AWG	3/8"	0.547	0.689	2.795	1.000	0.520	1.063	1.417	0.134	0.413	Purple	25
L4038P	4/0 AWG	4/0 - 1 AWG	3/8"	0.547	0.689	2.795	1.000	0.520	1.063	1.417	0.134	0.413	Purple	25
L4048	4/0 AWG	4/0 - 1 AWG	1/2"	0.547	0.689	2.795	1.000	0.520	1.063	1.417	0.134	0.512	Purple	25
L4048P	4/0 AWG	4/0 - 1 AWG	1/2"	0.547	0.689	2.795	1.000	0.520	1.063	1.417	0.134	0.512	Purple	25
L25048	250 MCM	250 MCM - 1/0 AWG	1/2"	0.594	0.752	3.031	1.091	0.520	1.063	1.614	0.150	0.512	Yellow	25
L30048	300 MCM	300 MCM - 2/0 AWG	1/2"	0.657	0.815	3.386	1.189	0.520	1.063	1.969	0.150	0.512	White	12
L35048	350 MCM	350 MCM - 3/0 AWG	1/2"	0.701	0.874	3.465	1.276	0.520	1.063	1.969	0.165	0.512	Red	12
L40048	400 MCM	400 MCM - 4/0 AWG	1/2"	0.764	0.949	3.858	1.386	0.512	1.378	1.969	0.177	0.512	Blue	6
L50048	500 MCM	500 - 250 MCM	1/2"	0.835	1.063	4.134	1.539	0.512	1.378	2.244	0.217	0.512	Brown	6
L50058	500 MCM	500 - 250 MCM	5/8"	0.835	1.063	4.134	1.539	0.512	1.378	2.244	0.217	0.669	Brown	6
L60058	600 MCM	600 - 250 MCM	5/8"	0.925	1.189	4.252	1.717	0.689	1.457	2.244	0.252	0.669	Green	6
L75048	750 MCM	750 - 500 MCM	1/2"	1.031	1.311	5.157	1.902	0.689	1.850	2.638	0.268	0.512	Black	3
L75058	750 MCM	750 - 500 MCM	5/8"	1.031	1.311	5.157	1.902	0.689	1.850	2.638	0.268	0.669	Black	3
L10058	1000 MCM	-	5/8"	1.184	1.494	5.613	2.148	0.866	1.776	2.603	0.328	0.663	White	3