

COMPRESSION CONNECTORS

Long Barrel One Hole

Copper Lugs

L SERIES



FEATURES

- Produced from high conductivity copper tubing.
- Tin-plated to provide corrosion low contact resistance.
- Marked with die index and color coded.
- Listed for 35KV max when properly installed and to cable manufacturer instructions.
- For applications greater than 2000V, consult the cable manufacturer for voltage stress relief instructions.

NOTE: Part Numbers ending in "P" have a "peep" or sight inspection hole.

RATINGS



UL486A/B Listed.

UL467 Grounding & Bonding (Sizes 8 AWG - 3/0 AWG)

Max ampacity is based on NEC 310.15, insulation type, and conductor material. Please consult your current NEC manual.

* CLASS B OR C BUILDING WIRE CU CABLE ONLY

TEMPERATURE RATING:

90 °C.

RATING:

600V

All dimensional data is listed in inches.

CAT. NO.	WIRE RANGE	EXPANDED WIRE RANGE**
L810	8 AWG	8 - 10 AWG
L810P	8 AWG	8 - 10 AWG
L814	8 AWG	8 - 10 AWG
L814P	8 AWG	8 - 10 AWG
L838	8 AWG	8 - 10 AWG
L838P	8 AWG	8 - 10 AWG
L610	6 AWG	6 - 8 AWG
L614	6 AWG	6 - 8 AWG
L614P	6 AWG	6 - 8 AWG
L638	6 AWG	6 - 8 AWG
L638P	6 AWG	6 - 8 AWG
L656	6 AWG	6 - 8 AWG
L656P	6 AWG	6 - 8 AWG
L410	4 AWG	4 - 6 AWG
L414	4 AWG	4 - 6 AWG
L414P	4 AWG	4 - 6 AWG
L438	4 AWG	4 - 6 AWG
L438P	4 AWG	4 - 6 AWG
L456	4 AWG	4 - 6 AWG
L456P	4 AWG	4 - 6 AWG
L314	3 AWG	3 - 6 AWG
L356	3 AWG	3 - 6 AWG
L338	3 AWG	3 - 6 AWG
L214	2 AWG	2 - 6 AWG
L214P	2 AWG	2 - 6 AWG
L256	2 AWG	2 - 6 AWG
L256P	2 AWG	2 - 6 AWG
L238	2 AWG	2 - 6 AWG
L238P	2 AWG	2 - 6 AWG
L156	1 AWG	1 - 6 AWG
L138	1 AWG	1 - 6 AWG
L1014	1/0 AWG	1/0 - 6 AWG
L1014P	1/0 AWG	1/0 - 6 AWG
L1038	1/0 AWG	1/0 - 6 AWG

***EXPANDED WIRE RANGE** when installed with NSI N121D dieless compression tool. UL Listed with other tools:

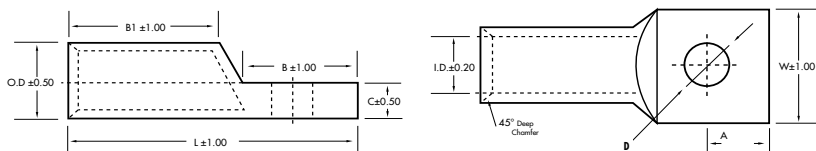
FOR TOOL & DIE CRIMPING INFORMATION, PLEASE SEE TABLE ON PAGE 143



Scan QR to view Tool & Die Charts



BOLT SIZE	I.D.	O.D.	LENGTH (L)	WIDTH (W)	A	B	B1	C	D	COLOR	STD. CTN. QTY.
#10	0.205	0.295	1.520	0.420	0.280	0.590	0.810	0.080	0.210	Red	100
#10	0.205	0.295	1.520	0.420	0.280	0.590	0.810	0.080	0.210	Red	100
1/4"	0.205	0.295	1.520	0.420	0.280	0.590	0.810	0.080	0.252	Red	100
1/4"	0.205	0.295	1.520	0.420	0.280	0.590	0.810	0.080	0.252	Red	100
3/8"	0.205	0.295	1.520	0.420	0.280	0.590	0.810	0.080	0.413	Red	100
3/8"	0.205	0.295	1.520	0.420	0.280	0.590	0.810	0.080	0.413	Red	100
#10	0.205	0.295	1.770	0.420	0.300	0.640	0.980	0.083	0.210	Blue	100
1/4"	0.205	0.295	1.772	0.421	0.295	0.669	0.984	0.083	0.252	Blue	100
1/4"	0.205	0.295	1.772	0.421	0.295	0.669	0.984	0.083	0.252	Blue	100
3/8"	0.205	0.295	1.913	0.591	0.370	0.811	0.984	0.083	0.413	Blue	100
3/8"	0.205	0.295	1.913	0.591	0.370	0.811	0.984	0.083	0.413	Blue	100
5/16"	0.205	0.295	1.910	0.590	0.370	0.810	0.980	0.083	0.330	Blue	100
5/16"	0.205	0.295	1.910	0.590	0.370	0.810	0.980	0.083	0.330	Blue	100
#10	0.252	0.343	1.770	0.488	0.315	0.669	0.980	0.087	0.210	Gray	100
1/4"	0.252	0.343	1.772	0.488	0.315	0.669	0.984	0.087	0.252	Gray	100
1/4"	0.252	0.343	1.772	0.488	0.315	0.669	0.984	0.087	0.252	Gray	100
3/8"	0.252	0.343	1.913	0.591	0.370	0.811	0.984	0.087	0.413	Gray	100
3/8"	0.252	0.343	1.913	0.591	0.370	0.811	0.984	0.087	0.413	Gray	100
5/16"	0.252	0.343	1.772	0.488	0.315	0.669	0.984	0.087	0.331	Gray	100
5/16"	0.252	0.343	1.772	0.488	0.315	0.669	0.984	0.087	0.331	Gray	100
1/4"	0.270	0.377	2.344	0.531	0.323	0.828	1.169	0.097	0.277	White	100
5/16"	0.270	0.377	2.157	0.538	0.346	0.767	1.120	0.091	0.336	White	50
3/8"	0.270	0.377	2.351	0.550	0.418	0.823	1.188	0.083	0.397	White	50
1/4"	0.315	0.421	2.071	0.602	0.206	0.811	1.102	0.102	0.252	Brown	50
1/4"	0.315	0.421	2.071	0.602	0.206	0.811	1.102	0.102	0.252	Brown	50
5/16"	0.315	0.421	2.071	0.602	0.370	0.811	1.102	0.102	0.331	Brown	50
5/16"	0.315	0.421	2.071	0.602	0.370	0.811	1.102	0.102	0.331	Brown	50
3/8"	0.315	0.421	2.071	0.602	0.370	0.811	1.102	0.102	0.413	Brown	50
3/8"	0.315	0.421	2.071	0.602	0.370	0.811	1.102	0.102	0.413	Brown	50
5/16"	0.358	0.469	2.110	0.673	0.370	0.811	1.102	0.106	0.331	Green	50
3/8"	0.358	0.469	2.209	0.673	0.370	0.811	1.102	0.106	0.413	Green	50
1/4"	0.390	0.520	2.210	0.744	0.370	0.811	1.201	0.126	0.210	Pink	50
1/4"	0.390	0.520	2.210	0.744	0.370	0.811	1.201	0.126	0.210	Pink	50
3/8"	0.390	0.520	2.209	0.744	0.370	0.811	1.201	0.126	0.413	Pink	50



COMPRESSION CONNECTORS

Long Barrel One Hole

Copper Lugs

L SERIES CONTINUED



FEATURES

- Produced from high conductivity copper tubing.
- Tin-plated to provide corrosion low contact resistance.
- Marked with die index and color coded.
- Listed for 35KV max when properly installed and to cable manufacturer instructions
- For applications greater than 2000V, consult the cable manufacturer for voltage stress relief instructions.

NOTE: Part Numbers ending in "P" have a "peep" or sight inspection hole.

RATINGS



UL486A/B Listed.

UL467 Grounding & Bonding (Sizes 8 AWG - 3/0 AWG)

Max ampacity is based on NEC 310.15, insulation type, and conductor material. Please consult your current NEC manual.

* CLASS B OR C BUILDING WIRE CU CABLE ONLY

TEMPERATURE RATING:

90 °C.

RATING:

600V

All dimensional data is listed in inches.

CAT. NO.	WIRE RANGE	EXPANDED WIRE RANGE*
L1038P	1/0 AWG	1/0 - 6 AWG
L1056	1/0 AWG	1/0 - 6 AWG
L1056P	1/0 AWG	1/0 - 6 AWG
L1048	1/0 AWG	1/0 - 6 AWG
L2014	2/0 AWG	2/0 - 4 AWG
L2014P	2/0 AWG	2/0 - 4 AWG
L2038	2/0 AWG	2/0 - 4 AWG
L2038P	2/0 AWG	2/0 - 4 AWG
L2048	2/0 AWG	2/0 - 4 AWG
L2048P	2/0 AWG	2/0 - 4 AWG
L3014	3/0 AWG	3/0 - 2 AWG
L3014P	3/0 AWG	3/0 - 2 AWG
L3038	3/0 AWG	3/0 - 2 AWG
L3038P	3/0 AWG	3/0 - 2 AWG
L3048	3/0 AWG	3/0 - 2 AWG
L3048P	3/0 AWG	3/0 - 2 AWG
L4014	4/0 AWG	4/0 - 1 AWG
L4014P	4/0 AWG	4/0 - 1 AWG
L4038	4/0 AWG	4/0 - 1 AWG
L4038P	4/0 AWG	4/0 - 1 AWG
L4048	4/0 AWG	4/0 - 1 AWG
L4048P	4/0 AWG	4/0 - 1 AWG
L25048	250 MCM	250 MCM - 1/0 AWG
L30048	300 MCM	300 MCM - 2/0 AWG
L35048	350 MCM	350 MCM - 3/0 AWG
L40048	400 MCM	400 MCM - 4/0 AWG
L50048	500 MCM	500 - 250 MCM
L50058	500 MCM	500 - 250 MCM
L60058	600 MCM	600 - 250 MCM
L75048	750 MCM	750 - 500 MCM
L75058	750 MCM	750 - 500 MCM
L10058	1000 MCM	-

*EXPANDED WIRE RANGE when installed with NSI N121D dieless compression tool. UL Listed with other tools:

FOR TOOL & DIE CRIMPING INFORMATION, PLEASE SEE TABLE ON PAGE 143



Scan QR to view Tool & Die Charts



BOLT SIZE (IN.)	I.D.	O.D.	LENGTH (L)	WIDTH (W)	A	B	B1	C	D	COLOR	STD. CTN. QTY.
3/8"	0.390	0.520	2.209	0.744	0.370	0.811	1.201	0.126	0.413	Pink	50
5/16"	0.390	0.520	2.210	0.744	0.370	0.811	1.201	0.126	0.330	Pink	50
5/16"	0.390	0.520	2.210	0.744	0.370	0.811	1.201	0.126	0.330	Pink	50
1/2"	0.390	0.520	2.500	0.744	0.472	1.063	1.201	0.126	0.512	Pink	50
1/4"	0.441	0.563	2.677	0.815	0.472	1.063	1.378	0.118	0.252	Black	25
1/4"	0.441	0.563	2.677	0.815	0.472	1.063	1.378	0.118	0.252	Black	25
3/8"	0.441	0.563	2.677	0.815	0.472	1.063	1.378	0.118	0.413	Black	25
3/8"	0.441	0.563	2.677	0.815	0.472	1.063	1.378	0.118	0.413	Black	25
1/2"	0.441	0.563	2.677	0.815	0.472	1.063	1.378	0.118	0.512	Black	25
1/2"	0.441	0.563	2.677	0.815	0.472	1.063	1.378	0.118	0.512	Black	25
1/4"	0.492	0.622	2.795	0.902	0.472	1.063	1.378	0.126	0.252	Orange	25
1/4"	0.492	0.622	2.795	0.902	0.472	1.063	1.378	0.126	0.252	Orange	25
3/8"	0.492	0.622	2.795	0.902	0.472	1.063	1.378	0.126	0.413	Orange	25
3/8"	0.492	0.622	2.795	0.902	0.472	1.063	1.378	0.126	0.413	Orange	25
1/2"	0.492	0.622	2.795	0.902	0.472	1.063	1.378	0.126	0.512	Orange	25
1/2"	0.492	0.622	2.795	0.902	0.472	1.063	1.378	0.126	0.512	Orange	25
1/4"	0.547	0.689	2.795	1.000	0.520	1.063	1.417	0.134	0.252	Purple	25
1/4"	0.547	0.689	2.795	1.000	0.520	1.063	1.417	0.134	0.252	Purple	25
3/8"	0.547	0.689	2.795	1.000	0.520	1.063	1.417	0.134	0.413	Purple	25
3/8"	0.547	0.689	2.795	1.000	0.520	1.063	1.417	0.134	0.413	Purple	25
1/2"	0.547	0.689	2.795	1.000	0.520	1.063	1.417	0.134	0.512	Purple	25
1/2"	0.547	0.689	2.795	1.000	0.520	1.063	1.417	0.134	0.512	Purple	25
1/2"	0.594	0.752	3.031	1.091	0.520	1.063	1.614	0.150	0.512	Yellow	25
1/2"	0.657	0.815	3.386	1.189	0.520	1.063	1.969	0.150	0.512	White	12
1/2"	0.701	0.874	3.465	1.276	0.520	1.063	1.969	0.165	0.512	Red	12
1/2"	0.764	0.949	3.858	1.386	0.512	1.378	1.969	0.177	0.512	Blue	6
1/2"	0.835	1.063	4.134	1.539	0.512	1.378	2.244	0.217	0.512	Brown	6
5/8"	0.835	1.063	4.134	1.539	0.512	1.378	2.244	0.217	0.669	Brown	6
5/8"	0.925	1.189	4.252	1.717	0.689	1.457	2.244	0.252	0.669	Green	6
1/2"	1.031	1.311	5.157	1.902	0.689	1.850	2.638	0.268	0.512	Black	3
5/8"	1.031	1.311	5.157	1.902	0.689	1.850	2.638	0.268	0.669	Black	3
5/8"	1.184	1.494	5.613	2.148	0.866	1.776	2.603	0.328	0.663	White	3

