

**BURNDY Catalog Number**  
**UPC Number**  
**Description**  
**Status**

KS17  
 7818100115088  
 SERVIT 8STR - 6SOL  
 Active

**Web Use**  
 BURNDY Product Line

**Dimensional**

Width (in) 0.45  
 Size (Hex) or Size (Bolt) 7/16  
 Cross Flats 0.63  
 Size (Hex) or Size (Bolt) - in 0.438  
 B Length (in) .58  
 B Length (Fraction) 29/50

**General**

Product Description

Copper Split Bolt, Cu: 8 AWG (Str)-6 AWG (Sol) (Run & Tap),Length:1.14

**Conductor(s)**

Copper Tap Range 14 AWG-6 AWG  
 CopperWeld Solid Run Size (Range) 6 AWG  
 Copper Stranded Run (Range) 8 AWG-6 AWG  
 CopperWeld Stranded Tap Size (Range) 9-1/2 D-3#12  
 Copper Solid Tap (Range) 14 AWG-6 AWG  
 CopperWeld Solid Tap Size (Range) 6 AWG  
 Copper Solid Run Size (Range) 8 AWG-6 AWG  
 CopperWeld Stranded Run Size (Range) 9-1/2D -3#12

**Physical**

Installation Torque 165  
 Type of Plating Unplated  
 Connector Type Split Bolt  
 Plated (Yes or No) N  
 Product Material Copper

**Approvals / Certifications**

Rated for Direct Burial Y  
 UL Listed Y  
 CSA Certified Y  
 ROHS Compatible Compliant  
 UL Recognized N  
 CULUS N  
 Industry Standards RUS

**Documentation**

For further technical assistance, please contact us

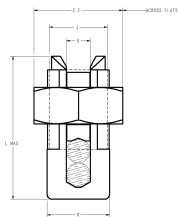
**BURNDY LLC - USA**

47 East Industrial Park Drive  
 Manchester NH 03109

**BURNDY Technical Services**

47 East Industrial Park Drive  
 Manchester NH 03109

Hours: 8:00 AM - 5:00 PM  
 Monday - Friday  
 Phone: 800-346-4175



**BURNDY Catalog Number**  
**UPC Number**  
**Description**  
**Status**

KS17  
 7818100115088  
 SERVIT 8STR - 6SOL  
 Active

**Web Use**  
 BURNDY Product Line

**Dimensional**

Width (in) 0.45  
 Size (Hex) or Size (Bolt) 7/16  
 Cross Flats 0.63  
 Size (Hex) or Size (Bolt) - in 0.438  
 B Length (in) .58  
 B Length (Fraction) 29/50

**General**

Product Description

Copper Split Bolt, Cu: 8 AWG (Str)-6 AWG (Sol) (Run & Tap),Length:1.14

**Conductor(s)**

Copper Tap Range 14 AWG-6 AWG  
 CopperWeld Solid Run Size (Range) 6 AWG  
 Copper Stranded Run (Range) 8 AWG-6 AWG  
 CopperWeld Stranded Tap Size (Range) 9-1/2 D-3#12  
 Copper Solid Tap (Range) 14 AWG-6 AWG  
 CopperWeld Solid Tap Size (Range) 6 AWG  
 Copper Solid Run Size (Range) 8 AWG-6 AWG  
 CopperWeld Stranded Run Size (Range) 9-1/2D -3#12

**Physical**

Installation Torque 165  
 Type of Plating Unplated  
 Connector Type Split Bolt  
 Plated (Yes or No) N  
 Product Material Copper

**Approvals / Certifications**

Rated for Direct Burial Y  
 UL Listed Y  
 CSA Certified Y  
 ROHS Compatible Compliant  
 UL Recognized N  
 CULUS N  
 Industry Standards RUS

**Documentation**

**For further technical assistance, please contact us**

**BURNDY LLC - USA**

47 East Industrial Park Drive  
 Manchester NH 03109

**BURNDY Technical Services**

47 East Industrial Park Drive  
 Manchester NH 03109

Hours: 8:00 AM - 5:00 PM  
 Monday - Friday  
 Phone: 800-346-4175