



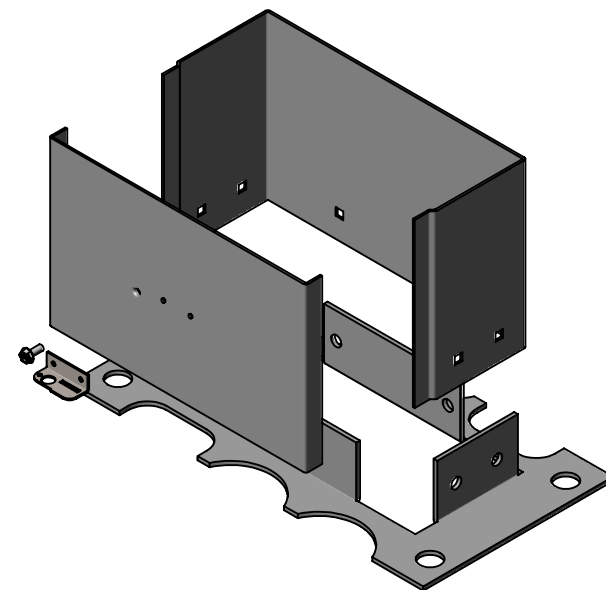
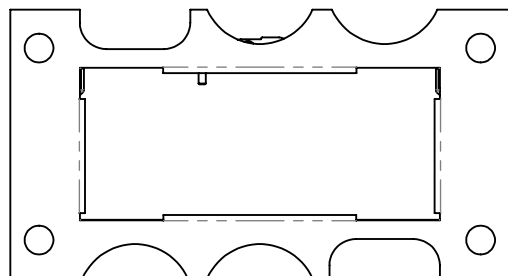
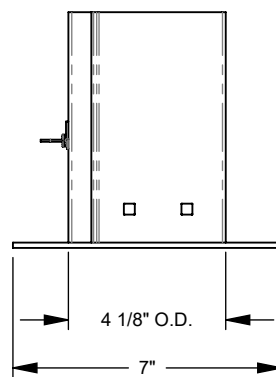
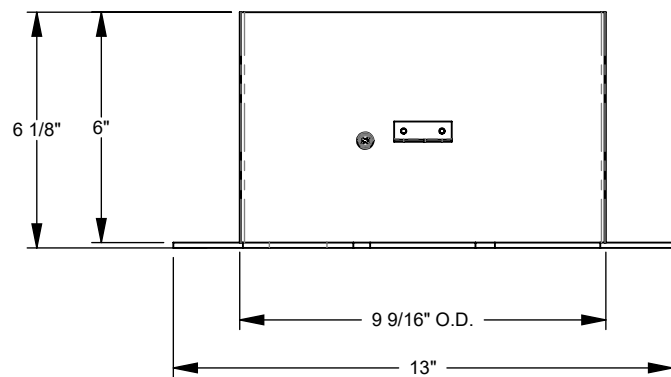
**MILBANK**  
ENERGY AT WORK

## K5035



Catalog Number	K5035
Marketing Product Description	Pad Mount Kit Versace
UPC	784572292208
Length (IN)	7
Width (IN)	13
Height (IN)	6
Weight (LB)	7
Brand Name	Milbank
Type	Product Support
Application	RV or Mobile Home Accessory
Standard	UL Listed
Cover Type	No Cover
Enclosure	No Enclosure
Material	G90 Galvanized Steel
Finish	ANSI 61 Gray Powder Coat Finish
Consist Of	Fitting
Knockouts	False
NEMA Rating	No Rating

Please consult serving utility for their requirements prior to ordering or installing, as specifications and approvals vary by utility and may require local electrical inspector approval. All installations must be installed by a licensed electrician and must comply with all national and local codes, laws and regulations. Milbank reserves the right to make changes in specifications and features shown without notice or obligation.



**MILBANK**  
ENERGY AT WORK

Version:

**1**

**All dimensions are +/- 1/16".  
Drawing views are not to scale.**

Please consult serving utility for their requirements prior to ordering or installing, as specifications and approvals vary by utility, and may require local electrical inspector approval. All installations must be installed by a licensed electrician and must comply with all national and local codes, laws and regulations. Milbank reserves the right to make changes in specifications and features shown without notice or obligation.



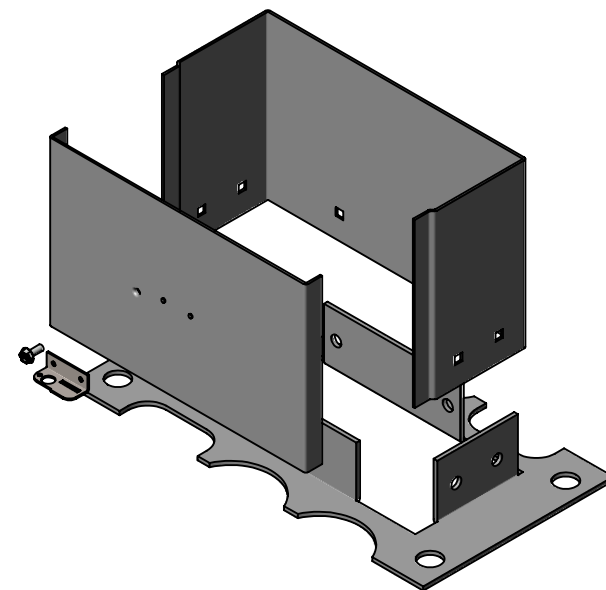
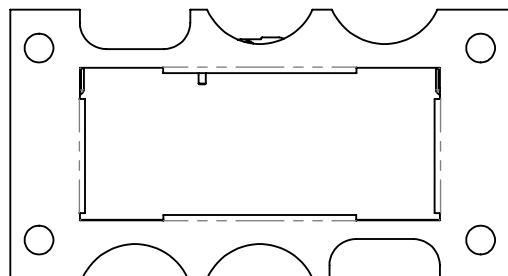
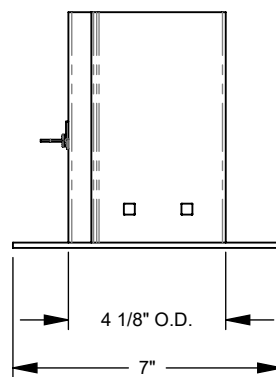
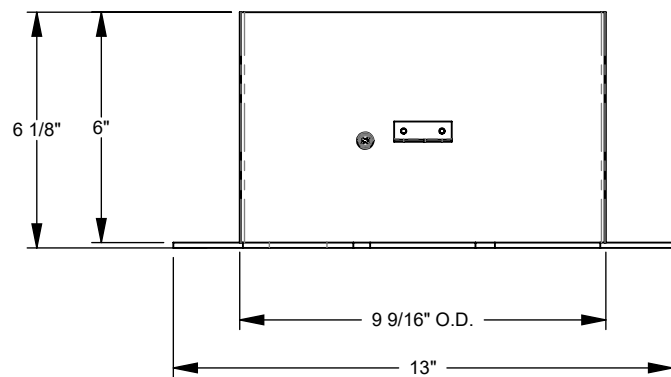
**MILBANK**  
ENERGY AT WORK

## K5035



Catalog Number	K5035
Marketing Product Description	Pad Mount Kit Versace
UPC	784572292208
Length (IN)	7
Width (IN)	13
Height (IN)	6
Weight (LB)	7
Brand Name	Milbank
Type	Product Support
Application	RV or Mobile Home Accessory
Standard	UL Listed
Cover Type	No Cover
Enclosure	No Enclosure
Material	G90 Galvanized Steel
Finish	ANSI 61 Gray Powder Coat Finish
Consist Of	Fitting
Knockouts	False
NEMA Rating	No Rating

Please consult serving utility for their requirements prior to ordering or installing, as specifications and approvals vary by utility and may require local electrical inspector approval. All installations must be installed by a licensed electrician and must comply with all national and local codes, laws and regulations. Milbank reserves the right to make changes in specifications and features shown without notice or obligation.



**MILBANK**  
ENERGY AT WORK

Version:

**1**

**All dimensions are +/- 1/16".  
Drawing views are not to scale.**

Please consult serving utility for their requirements prior to ordering or installing, as specifications and approvals vary by utility, and may require local electrical inspector approval. All installations must be installed by a licensed electrician and must comply with all national and local codes, laws and regulations. Milbank reserves the right to make changes in specifications and features shown without notice or obligation.