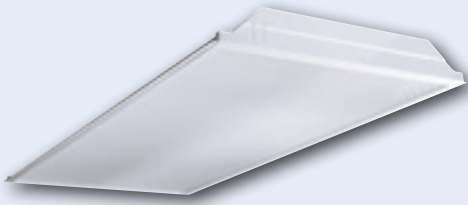


JT8

Dedicated T8 Lensed Troffer

LENSED TROFFERS



FEATURES

- Optimized for T8 lamps
- Recessed, surface, or cable mount
- Flush steel door (standard) hinges from either side for maximum flexibility
- Mitered corners standard
- Hemmed edges on 2' x 4' for contractor-friendly handling
- Mechanical light trap prevents light leak without foam gasketing
- Integral T-Bar clips (2' x 4' only)
- Housing reinforced with embossments
- Painted parts are treated with a five stage phosphate bonding process and finished with a backed white enamel
- UL listed 1598, cUL or CSA. Damp Location standard
- Available with exclusive wiHUBB technology preinstalled

ORDERING INFORMATION

| JT8 | | | | | | | | |
|---|---|---|--|---------------------------------------|---|--|--|--|
| MODEL | NO. OF LAMPS | CEILING TYPE | SHIELDING | VOLTAGE | OPTIONS | | | |
| JT8 Dedicated T8 Lensed Troffer | 2 Two 3 Three 4 Four (2 x 4 only) See Product Availability table below. | G Inverted T-Bar ¹ SM Surface Mount CM Cable Mount ² | A12 Pattern 12 Acrylic Lens (Std.) A12125 Pattern 12 Acrylic Lens, 0.125" Nominal A19 Pattern 19 Acrylic Lens, 0.156" Nominal PC1 ½" x ½" x ½" Specular Silver Polystyrene Louver For more shielding options see page 40. | U 120V-277V 347 347V | F835 35K 78+CRI T8 Lamps Installed F841 41K 78+CRI T8 Lamps Installed F0835 35K 82CRI T8 Lamps Installed F0841 41K 82 CRI T8 Lamps Installed EL Emergency Battery Pack Installed ³ GLR Fast Blow Fuse MS9 Master/Satellite w/9' Harness C388 3-Wire Flex C488 4-Wire Flex PAF Paint After Fabrication M4R Specular Reflector WIH wiHUBB Enabled ^{4,5} EOR End of Row (SM/CM only) ^{6,7} INT Intermediate (SM/CM only) ^{6,7} CP Chicago Plenum For more options see Technical section. | | | |
| SIZE | LAMP TYPE | DOOR | BALLAST | | | | | |
| 22 2' x 2' | 17 2', T8: 17 Watt (2, 3, or 4 lamps) 31U1 U-Bent, 1½" Leg Spacing T8: 31 Watt (2 or 3 lamps) 32 4', T8: 32, 30, 28 or 25 Watt 32U6 U-Bent, 6" Leg Spacing T8: 32 Watt (2 lamps) 40TT Twin Tube Compact, 2G11 Base: 40 Watt (2 or 3 lamps) | FS White Flush Steel FA White Flush Aluminum For more door options contact factory. | NOTE: See Technical Section for other ballast options. E Electronic T8, Instant Start 3E 3-Lamp Electronic T8, Instant Start 4E 4-Lamp Electronic T8, Instant Start (17W lamps only) 24E (1) 2-Lamp & (1) 4-Lamp Electronic T8, Instant Start (For use with MS9) EP Electronic T8, Programmed Start 3EP 3-Lamp Electronic T8, Programmed Start 4EP 4-Lamp Electronic T8, Programmed Start ELW 2-Lamp Electronic T8, 0.77 Ballast Factor, Low Wattage, Instant Start 3ELW 3-Lamp Electronic T8, 0.77 Ballast Factor, Low Wattage, Instant Start 4ELW 4-Lamp Electronic T8, 0.77 Ballast Factor, Low Wattage, Instant Start EPTT Electronic Twin Tube, Programmed Start | | | | | |
| ACCESSORIES (ORDER SEPARATELY) | | | | | | | | |
| FK22 2'x2' Single Flange Kit | | | | | | | | |
| FK24 2'x4' Single Flange Kit | | | | | | | | |
| FKCR Flange Kit Row Adaptor (All Sizes) | | | | | | | | |
| CM48Y2SC3F-KIT 48" Cable Mount Kit for 2' wide CM ceiling type, 3 Wire Feed Cord | | | | | | | | |

¹ For drywall, order flange kit accessories separately.

² Order hanger accessories separately.

³ 3-lamp 2x2 fixture utilizes 2 ballast compartments and can mount any standard battery pack. 2 and 4-lamp fixtures can only mount one ballast and one 9" long or shorter battery pack. All other battery packs must be externally mounted.

⁴ In-Fixture Module Antenna adds 2" to overall fixture height at power feed location.

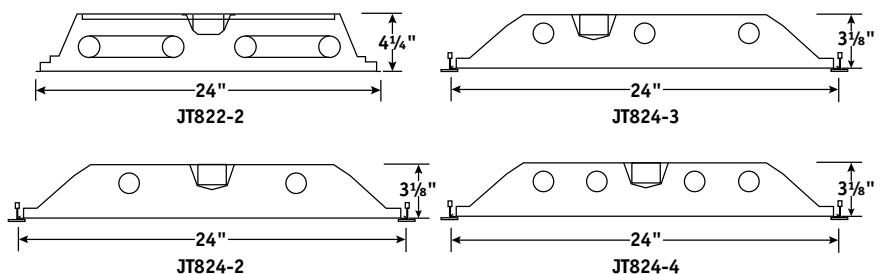
⁵ Not available with Surface Mount ceiling types.

⁶ Provides ends with wiring access for continuous row mounting.

⁷ Contact Hubbell representative for continuous row, 3-lamp fixtures.

PRODUCT AVAILABILITY

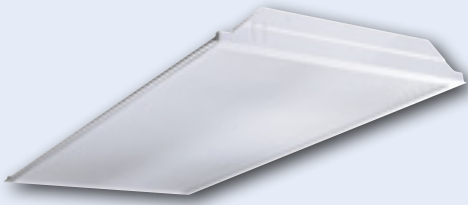
| SIZE | NO. OF LAMPS | LAMP TYPE | GRID TRIM HEIGHT | SM TRIM HEIGHT |
|---------|--------------|----------------------|------------------|----------------|
| 2' x 2' | 2 | 17, 31U1, 32U6, 40TT | 4¼" | 4⅝" |
| | 3 | 17, 31U1, 40TT | 4¼" | 4⅝" |
| | 4 | 17 | 4¼" | 4⅝" |
| 2' x 4' | 2 | 32 | 3⅝" | 3¾" |
| | 3 | 32 | 3⅝" | 3¾" |
| | 4 | 32 | 3⅝" | 3¾" |



JT8

Dedicated T8 Lensed Troffer

LENSED TROFFERS



FEATURES

- Optimized for T8 lamps
- Recessed, surface, or cable mount
- Flush steel door (standard) hinges from either side for maximum flexibility
- Mitered corners standard
- Hemmed edges on 2' x 4' for contractor-friendly handling
- Mechanical light trap prevents light leak without foam gasketing
- Integral T-Bar clips (2' x 4' only)
- Housing reinforced with embossments
- Painted parts are treated with a five stage phosphate bonding process and finished with a backed white enamel
- UL listed 1598, cUL or CSA. Damp Location standard
- Available with exclusive wiHUBB technology preinstalled

ORDERING INFORMATION

| JT8 | | | | | | | | | |
|---|---|---|--|---------------------------------------|---|--|--|--|--|
| MODEL | NO. OF LAMPS | CEILING TYPE | SHIELDING | VOLTAGE | OPTIONS | | | | |
| JT8 Dedicated T8 Lensed Troffer | 2 Two 3 Three 4 Four (2 x 4 only) See Product Availability table below. | G Inverted T-Bar ¹ SM Surface Mount CM Cable Mount ² | A12 Pattern 12 Acrylic Lens (Std.) A12125 Pattern 12 Acrylic Lens, 0.125" Nominal A19 Pattern 19 Acrylic Lens, 0.156" Nominal PC1 ½" x ½" x ½" Specular Silver Polystyrene Louver For more shielding options see page 40. | U 120V-277V 347 347V | F835 35K 78+CRI T8 Lamps Installed F841 41K 78+CRI T8 Lamps Installed F0835 35K 82CRI T8 Lamps Installed F0841 41K 82 CRI T8 Lamps Installed EL Emergency Battery Pack Installed ³ GLR Fast Blow Fuse MS9 Master/Satellite w/9' Harness C388 3-Wire Flex C488 4-Wire Flex PAF Paint After Fabrication M4R Specular Reflector WIH wiHUBB Enabled ^{4,5} EOR End of Row (SM/CM only) ^{6,7} INT Intermediate (SM/CM only) ^{6,7} CP Chicago Plenum For more options see Technical section. | | | | |
| SIZE | LAMP TYPE | DOOR | BALLAST | | | | | | |
| 22 2' x 2' | 17 2', T8: 17 Watt (2, 3, or 4 lamps) 31U1 U-Bent, 1½" Leg Spacing T8: 31 Watt (2 or 3 lamps) 32 4', T8: 32, 30, 28 or 25 Watt 32U6 U-Bent, 6" Leg Spacing T8: 32 Watt (2 lamps) 40TT Twin Tube Compact, 2G11 Base: 40 Watt (2 or 3 lamps) | FS White Flush Steel FA White Flush Aluminum For more door options contact factory. | NOTE: See Technical Section for other ballast options. E Electronic T8, Instant Start 3E 3-Lamp Electronic T8, Instant Start 4E 4-Lamp Electronic T8, Instant Start (17W lamps only) 24E (1) 2-Lamp & (1) 4-Lamp Electronic T8, Instant Start (For use with MS9) EP Electronic T8, Programmed Start 3EP 3-Lamp Electronic T8, Programmed Start 4EP 4-Lamp Electronic T8, Programmed Start ELW 2-Lamp Electronic T8, 0.77 Ballast Factor, Low Wattage, Instant Start 3ELW 3-Lamp Electronic T8, 0.77 Ballast Factor, Low Wattage, Instant Start 4ELW 4-Lamp Electronic T8, 0.77 Ballast Factor, Low Wattage, Instant Start EPTT Electronic Twin Tube, Programmed Start | | | | | | |
| ACCESSORIES (ORDER SEPARATELY) | | | | | | | | | |
| FK22 2'x2' Single Flange Kit | | | | | | | | | |
| FK24 2'x4' Single Flange Kit | | | | | | | | | |
| FKCR Flange Kit Row Adaptor (All Sizes) | | | | | | | | | |
| CM48Y2SC3F-KIT 48" Cable Mount Kit for 2' wide CM ceiling type, 3 Wire Feed Cord | | | | | | | | | |

¹ For drywall, order flange kit accessories separately.

² Order hanger accessories separately.

³ 3-lamp 2x2 fixture utilizes 2 ballast compartments and can mount any standard battery pack. 2 and 4-lamp fixtures can only mount one ballast and one 9" long or shorter battery pack. All other battery packs must be externally mounted.

⁴ In-Fixture Module Antenna adds 2" to overall fixture height at power feed location.

⁵ Not available with Surface Mount ceiling types.

⁶ Provides ends with wiring access for continuous row mounting.

⁷ Contact Hubbell representative for continuous row, 3-lamp fixtures.

PRODUCT AVAILABILITY

| SIZE | NO. OF LAMPS | LAMP TYPE | GRID TRIM HEIGHT | SM TRIM HEIGHT |
|---------|--------------|----------------------|------------------|----------------|
| 2' x 2' | 2 | 17, 31U1, 32U6, 40TT | 4¼" | 4⅝" |
| | 3 | 17, 31U1, 40TT | 4¼" | 4⅝" |
| | 4 | 17 | 4¼" | 4⅝" |
| 2' x 4' | 2 | 32 | 3⅝" | 3¾" |
| | 3 | 32 | 3⅝" | 3¾" |
| | 4 | 32 | 3⅝" | 3¾" |

