

**HBLEED**  
High Bay LED luminaire

**Metalux**



**EATON**

*Powering Business Worldwide*



Open Configuration,  
Narrow Distribution

The **HBLED** delivers industry-leading performance and reliability for a variety of high-bay applications. Precision designed optics, multiple distributions, lumen outputs and color temperatures make the HBLED ideal for industrial, commercial, manufacturing, gymnasium and other applications that utilize traditional HID and linear fluorescent high bays. The proprietary low-power, low-brightness LED module assembly offers exceptional optical performance with the enhanced benefits of LED lighting, including energy savings, extended system life, and a reduced carbon footprint.

## Performance

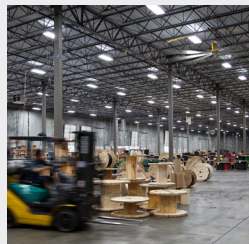
- Eight lumen packages up to 60,000 lumens
- Three Correlated Temperatures (3,500K, 4,000K and 5,000K)
- L84 @ 60,000 hours
- High performance efficacy up to 186 lm/W
- Tool-less driver access for easy maintenance
- Precision optics – narrow and wide distribution
- Optional 0-10V dimming driver (15% - 100%)
- Multiple lens and wireguard options
- Five-year warranty

## Compliance

- cULus listed for damp location
- 55° ambient rating
- RoHS compliant
- DLC qualified

## Features and benefits

- **LED platform**  
The proprietary low-power, low-brightness LED module assembly offers exceptional optical performance.
- **Controllable**  
Offers control flexibility and easy integration with optional 0-10V continuous dimming driver, providing additional energy savings when utilizing sensors. Available with native Fifth Light DALI drivers for complete digital energy management using the capable and scalable Fifth Light controllers and software. Integrated dual occupancy and daylight dimming sensor for added energy savings.
- **Connected lighting options**
  - Integrated dual occupancy and daylight dimming sensor for added savings
  - Get connected with LumaWatt Pro wireless system
- **Mounting**  
Choose from a variety of mounting methods, including pendant, chain, toggle, hook and loop.



Warehouse



Gymnasiums



Manufacturing

## Shielding options

Door frame and lens assembly are available for more demanding environments.

Clear Acrylic Doorframe and Lens



Prismatic Acrylic Doorframe and Lens



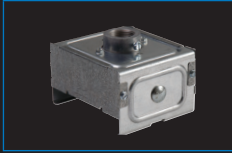
Clear Lens Inserts



## Mounting accessories

Suited for suspension mounting with optional wire hook and chain set or cable mounting. Single monopoint mounting also available with SPM tong hanger.

HBL-SPM=Single Monopoint Hanger w/Hub (Galvanized)



FH-1=2-1/2" Fixture Hook



FL-1=2-1/2" Fixture Loop



HBAYC-CHAIN/SET/U= Hook Style Mounting Chain Set



Y-Toggle=Mounting Toggle and Cable



## Energy and performance

	Standard Efficacy Catalog Number	Delivered Lumens	Watts	Efficacy (lm/W)	High Efficacy Catalog Number	Delivered Lumens	Watts	Efficacy (lm/W)
5000K, 70CRI	HBLED-LD5-12SE-W-UNV-L750	12,629	77	165	HBLED-LD5-12HE-W-UNV-L750	13,287	73	183
	HBLED-LD5-15SE-W-UNV-L750	16,342	95	172	HBLED-LD5-15HE-W-UNV-L750	17,035	92	186
	HBLED-LD5-18SE-W-UNV-L750	19,587	122	161	HBLED-LD5-18HE-W-UNV-L750	19,958	112	178
	HBLED-LD5-24SE-W-UNV-L750	24,953	154	162	HBLED-LD5-24HE-W-UNV-L750	26,231	146	179
	HBLED-LD5-30SE-W-UNV-L750	32,291	193	167	HBLED-LD5-30HE-W-UNV-L750	33,042	180	184
	HBLED-LD5-36SE-W-UNV-L750	37,307	232	161	HBLED-LD5-36HE-W-UNV-L750	38,589	211	183
	HBLED-LD5-48SE-W-UNV-L750	51,058	299	171	HBLED-LD5-48HE-W-UNV-L750	50,971	286	178
	HBLED-LD5-60SE-W-UNV-L750	62,380	386	162	HBLED-LD5-60HE-W-UNV-L750	63,643	369	172
5000K, 80CRI	HBLED-LD5-12SE-W-UNV-L850	12,206	77	159	HBLED-LD5-12HE-W-UNV-L850	12,841	73	177
	HBLED-LD5-15SE-W-UNV-L850	15,794	95	166	HBLED-LD5-15HE-W-UNV-L850	16,464	92	179
	HBLED-LD5-18SE-W-UNV-L850	18,930	122	155	HBLED-LD5-18HE-W-UNV-L850	19,289	112	172
	HBLED-LD5-24SE-W-UNV-L850	24,116	154	157	HBLED-LD5-24HE-W-UNV-L850	25,352	146	173
	HBLED-LD5-30SE-W-UNV-L850	31,209	193	162	HBLED-LD5-30HE-W-UNV-L850	31,935	180	177
	HBLED-LD5-36SE-W-UNV-L850	36,057	232	155	HBLED-LD5-36HE-W-UNV-L850	37,296	211	177
	HBLED-LD5-48SE-W-UNV-L850	49,346	299	165	HBLED-LD5-48HE-W-UNV-L850	49,262	286	172
	HBLED-LD5-60SE-W-UNV-L850	60,289	386	156	HBLED-LD5-60HE-W-UNV-L850	61,509	369	167

## Photometrics

**HBLED-LD5-24SE-N-UNV-L850-ED2-U**

Electronic Driver  
Linear LED 5000K  
Spacing criterion: (II) 1.27 x mounting height, (Δ) 0.62 x mounting height  
Lumens = 23,224  
Input Watts = 154W  
Efficacy = 150.8 lm/W  
Test: HBLED-LD5-24SE-N-L850-ED2-U.IES

rc	Effective floor cavity reflectance										
	80%			50%			20%				
	70	50	30	10	50	30	10	50	30	10	
Rw	0	119	119	119	111	111	111	106	106	106	
RCR	1	112	108	105	102	102	100	98	98	96	95
	2	105	98	93	89	93	89	86	90	87	84
	3	98	90	84	79	86	81	77	83	79	76
	4	92	82	76	70	79	73	69	77	72	68
	5	86	76	69	64	73	67	63	71	66	62
	6	81	70	63	58	68	62	58	66	61	57
	7	76	66	58	54	63	57	53	62	57	53
	8	72	61	54	49	59	53	49	58	53	49
	9	68	57	51	46	56	50	46	55	49	46
	10	65	54	47	43	53	47	43	52	46	43

Zone	Lumens	% Fixture
0-30	12590	54.2
0-40	16657	71.7
0-60	21400	92.1
0-90	23224	100.0
0-180	23224	100.0

**HBLED-LD5-24SE-W-UNV-L850-ED2-U**

Electronic Driver  
Linear LED 5000K  
Spacing criterion: (II) 1.28 x mounting height, (Δ) 1.29 x mounting height  
Lumens = 24,116  
Input Watts = 154W  
Efficacy = 156.6 lm/W  
Test: HBLED-LD5-24SE-W-L850-ED2-U.IES

rc	Effective floor cavity reflectance										
	80%			50%			20%				
	70	50	30	10	50	30	10	50	30	10	
Rw	0	119	119	119	111	111	111	106	106	106	
RCR	1	109	105	101	97	98	95	92	94	92	89
	2	99	91	85	79	86	81	76	83	78	75
	3	91	80	72	66	76	69	64	73	68	63
	4	83	71	62	56	67	60	55	65	59	54
	5	76	63	54	48	60	53	47	58	52	47
	6	70	57	48	42	54	47	41	53	46	41
	7	65	52	43	37	49	42	36	48	41	36
	8	61	47	38	33	45	38	32	44	37	32
	9	57	43	35	29	41	34	29	40	34	29
	10	53	40	32	27	38	31	26	37	31	26

Zone	Lumens	% Fixture
0-30	6586	27.3
0-40	10886	45.1
0-60	19623	81.4
0-90	24116	100.0
0-180	24116	100.0

**Lighting Product Lines**

Halo  
Halo Commercial  
Portfolio  
Iris  
RSA  
Metalux  
Corelite  
Neo-Ray  
Fail-Safe  
MWS  
Ametrix  
Shaper  
io  
Lumark  
McGraw-Edison  
Invue  
Ephesus  
Lumière  
Streetworks  
AtLite  
Sure-Lites

**Controls Product Lines**

Greengate  
iLumin  
Zero 88  
Fifth Light Technology  
iLight (International Only)

**Connected Lighting Systems**

LumaWatt Pro  
WaveLinx  
Distributed Low-Voltage Power  
ConnectWorks

**Eaton**

1121 Highway 74 South  
Peachtree City, GA 30269  
P: 770-486-4800  
[www.eaton.com/lighting](http://www.eaton.com/lighting)

**Canada Sales**

5925 McLaughlin Road  
Mississauga, Ontario L5R 1B8  
P: 905-501-3000  
F: 905-501-3172

© 2018 Eaton  
All Rights Reserved  
Printed in USA  
Publication No. ADF142876  
June 27, 2018 2:29 PM

Eaton is a registered trademark.

All other trademarks are property  
of their respective owners.

Product availability, specifications,  
and compliances are subject to  
change without notice.



*Powering Business Worldwide*

**HBLEED**  
High Bay LED luminaire

**Metalux**



**EATON**

*Powering Business Worldwide*



Open Configuration,  
Narrow Distribution

The **HBLED** delivers industry-leading performance and reliability for a variety of high-bay applications. Precision designed optics, multiple distributions, lumen outputs and color temperatures make the HBLED ideal for industrial, commercial, manufacturing, gymnasium and other applications that utilize traditional HID and linear fluorescent high bays. The proprietary low-power, low-brightness LED module assembly offers exceptional optical performance with the enhanced benefits of LED lighting, including energy savings, extended system life, and a reduced carbon footprint.

## Performance

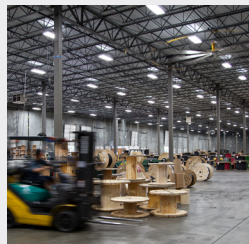
- Eight lumen packages up to 60,000 lumens
- Three Correlated Temperatures (3,500K, 4,000K and 5,000K)
- L84 @ 60,000 hours
- High performance efficacy up to 186 lm/W
- Tool-less driver access for easy maintenance
- Precision optics – narrow and wide distribution
- Optional 0-10V dimming driver (15% - 100%)
- Multiple lens and wireguard options
- Five-year warranty

## Compliance

- cULus listed for damp location
- 55° ambient rating
- RoHS compliant
- DLC qualified

## Features and benefits

- **LED platform**  
The proprietary low-power, low-brightness LED module assembly offers exceptional optical performance.
- **Controllable**  
Offers control flexibility and easy integration with optional 0-10V continuous dimming driver, providing additional energy savings when utilizing sensors. Available with native Fifth Light DALI drivers for complete digital energy management using the capable and scalable Fifth Light controllers and software. Integrated dual occupancy and daylight dimming sensor for added energy savings.
- **Connected lighting options**
  - Integrated dual occupancy and daylight dimming sensor for added savings
  - Get connected with LumaWatt Pro wireless system
- **Mounting**  
Choose from a variety of mounting methods, including pendant, chain, toggle, hook and loop.



Warehouse



Gymnasiums



Manufacturing

## Shielding options

Door frame and lens assembly are available for more demanding environments.

Clear Acrylic Doorframe and Lens



Prismatic Acrylic Doorframe and Lens



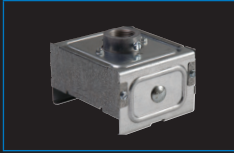
Clear Lens Inserts



## Mounting accessories

Suited for suspension mounting with optional wire hook and chain set or cable mounting. Single monopoint mounting also available with SPM tong hanger.

HBL-SPM=Single Monopoint Hanger w/Hub (Galvanized)



FH-1=2-1/2" Fixture Hook



FL-1=2-1/2" Fixture Loop



HBAYC-CHAIN/SET/U= Hook Style Mounting Chain Set



Y-Toggle=Mounting Toggle and Cable



## Energy and performance

	Standard Efficacy Catalog Number	Delivered Lumens	Watts	Efficacy (lm/W)
5000K, 70CRI	HBLED-LD5-12SE-W-UNV-L750	12,629	77	165
	HBLED-LD5-15SE-W-UNV-L750	16,342	95	172
	HBLED-LD5-18SE-W-UNV-L750	19,587	122	161
	HBLED-LD5-24SE-W-UNV-L750	24,953	154	162
	HBLED-LD5-30SE-W-UNV-L750	32,291	193	167
	HBLED-LD5-36SE-W-UNV-L750	37,307	232	161
	HBLED-LD5-48SE-W-UNV-L750	51,058	299	171
	HBLED-LD5-60SE-W-UNV-L750	62,380	386	162

	High Efficacy Catalog Number	Delivered Lumens	Watts	Efficacy (lm/W)
	HBLED-LD5-12HE-W-UNV-L750	13,287	73	183
	HBLED-LD5-15HE-W-UNV-L750	17,035	92	186
	HBLED-LD5-18HE-W-UNV-L750	19,958	112	178
	HBLED-LD5-24HE-W-UNV-L750	26,231	146	179
	HBLED-LD5-30HE-W-UNV-L750	33,042	180	184
	HBLED-LD5-36HE-W-UNV-L750	38,589	211	183
	HBLED-LD5-48HE-W-UNV-L750	50,971	286	178
	HBLED-LD5-60HE-W-UNV-L750	63,643	369	172

	Standard Efficacy Catalog Number	Delivered Lumens	Watts	Efficacy (lm/W)
5000K, 80CRI	HBLED-LD5-12SE-W-UNV-L850	12,206	77	159
	HBLED-LD5-15SE-W-UNV-L850	15,794	95	166
	HBLED-LD5-18SE-W-UNV-L850	18,930	122	155
	HBLED-LD5-24SE-W-UNV-L850	24,116	154	157
	HBLED-LD5-30SE-W-UNV-L850	31,209	193	162
	HBLED-LD5-36SE-W-UNV-L850	36,057	232	155
	HBLED-LD5-48SE-W-UNV-L850	49,346	299	165
	HBLED-LD5-60SE-W-UNV-L850	60,289	386	156

	High Efficacy Catalog Number	Delivered Lumens	Watts	Efficacy (lm/W)
	HBLED-LD5-12HE-W-UNV-L850	12,841	73	177
	HBLED-LD5-15HE-W-UNV-L850	16,464	92	179
	HBLED-LD5-18HE-W-UNV-L850	19,289	112	172
	HBLED-LD5-24HE-W-UNV-L850	25,352	146	173
	HBLED-LD5-30HE-W-UNV-L850	31,935	180	177
	HBLED-LD5-36HE-W-UNV-L850	37,296	211	177
	HBLED-LD5-48HE-W-UNV-L850	49,262	286	172
	HBLED-LD5-60HE-W-UNV-L850	61,509	369	167

## Photometrics

**HBLED-LD5-24SE-N-UNV-L850-ED2-U**

Electronic Driver  
Linear LED 5000K  
Spacing criterion: (II) 1.27 x mounting height, (L) 0.62 x mounting height  
Lumens = 23,224  
Input Watts = 154W  
Efficacy = 150.8 lm/W  
Test: HBLED-LD5-24SE-N-L850-ED2-U.IES

rc	Effective floor cavity reflectance									
	80%			50%			20%			
	70	50	30	10	50	30	10	50	30	10
0	119	119	119	119	111	111	111	106	106	106
1	112	108	105	102	102	100	98	98	96	95
2	105	98	93	89	93	89	86	90	87	84
3	98	90	84	79	86	81	77	83	79	76
4	92	82	76	70	79	73	69	77	72	68
5	86	76	69	64	73	67	63	71	66	62
6	81	70	63	58	68	62	58	66	61	57
7	76	66	58	54	63	57	53	62	57	53
8	72	61	54	49	59	53	49	58	53	49
9	68	57	51	46	56	50	46	55	49	46
10	65	54	47	43	53	47	43	52	46	43

Zone	Lumens	% Fixture
0-30	12590	54.2
0-40	16657	71.7
0-60	21400	92.1
0-90	23224	100.0
0-180	23224	100.0

**HBLED-LD5-24SE-W-UNV-L850-ED2-U**

Electronic Driver  
Linear LED 5000K  
Spacing criterion: (II) 1.28 x mounting height, (L) 1.29 x mounting height  
Lumens = 24,116  
Input Watts = 154W  
Efficacy = 156.6 lm/W  
Test: HBLED-LD5-24SE-W-L850-ED2-U.IES

rc	Effective floor cavity reflectance									
	80%			50%			20%			
	70	50	30	10	50	30	10	50	30	10
0	119	119	119	119	111	111	111	106	106	106
1	109	105	101	97	98	95	92	94	92	89
2	99	91	85	79	86	81	76	83	78	75
3	91	80	72	66	76	69	64	73	68	63
4	83	71	62	56	67	60	55	65	59	54
5	76	63	54	48	60	53	47	58	52	47
6	70	57	48	42	54	47	41	53	46	41
7	65	52	43	37	49	42	36	48	41	36
8	61	47	38	33	45	38	32	44	37	32
9	57	43	35	29	41	34	29	40	34	29
10	53	40	32	27	38	31	26	37	31	26

Zone	Lumens	% Fixture
0-30	6586	27.3
0-40	10886	45.1
0-60	19623	81.4
0-90	24116	100.0
0-180	24116	100.0

**Lighting Product Lines**

Halo  
Halo Commercial  
Portfolio  
Iris  
RSA  
Metalux  
Corelite  
Neo-Ray  
Fail-Safe  
MWS  
Ametrix  
Shaper  
io  
Lumark  
McGraw-Edison  
Invue  
Ephesus  
Lumière  
Streetworks  
AtLite  
Sure-Lites

**Controls Product Lines**

Greengate  
iLumin  
Zero 88  
Fifth Light Technology  
iLight (International Only)

**Connected Lighting Systems**

LumaWatt Pro  
WaveLinx  
Distributed Low-Voltage Power  
ConnectWorks

**Eaton**

1121 Highway 74 South  
Peachtree City, GA 30269  
P: 770-486-4800  
[www.eaton.com/lighting](http://www.eaton.com/lighting)

**Canada Sales**

5925 McLaughlin Road  
Mississauga, Ontario L5R 1B8  
P: 905-501-3000  
F: 905-501-3172

© 2018 Eaton  
All Rights Reserved  
Printed in USA  
Publication No. ADF142876  
June 27, 2018 2:29 PM

Eaton is a registered trademark.

All other trademarks are property  
of their respective owners.

Product availability, specifications,  
and compliances are subject to  
change without notice.



*Powering Business Worldwide*