

# GR and GRF Conduit Outlet Boxes

## Explosionproof, Dust-Ignitionproof

UNILETS® for use with Threaded Metal Conduit. Furnished with Internal Ground Screw and O-Ring.

Class I, Division 1 and 2, Groups B♦, C, D  
Class II, Division 1 and 2, Groups E, F, G  
Class III  
NEMA 3, 4

### Applications

- Complies with a wide range of classified area requirements.
- Corrosion-resistant: ideal indoors or out.
- For pulling of wires.
- Connect conduit lengths and change direction of conduit runs.
- Provide access for maintenance.

### Features

- GR boxes offers ten hub arrangements.
- GRF boxes have integral mounting flange.
- Malleable iron bodies have high tensile strength, ductility and provides great resistance to corrosion, impact, and shock.
- Accurately tapped, tapered hub threads for tight, rigid joints and ground continuity.
- Furnished with covers.
- General purpose wiring.
- Function as sealing fittings when used with sealing covers (see NEC for restrictions).
- Internally threaded body with externally threaded cover.
- Covers have pry notches for bar or wrench.
- Accommodate sealing, dome, hub and union hub covers, and canopies.
- Standard O-rings provide raintight fit. NEMA 3, 4.
- Internal ground screw standard.
- Smooth, rounded integral bushing in each hub type box protects conductor insulation.

### Standard Materials

- Body: malleable iron or copperfree (4/10 of 1% max.) aluminum
- Cover: copperfree (4/10 of 1% max.) aluminum

### Standard Finishes

- Malleable iron bodies and covers: triple-coat — (1) zinc electroplate, (2) chromate, and (3) epoxy powder coat
- Aluminum bodies and covers: epoxy powder coat

### Options

- To order body without cover, add suffix **-LC** to catalog number.
- For malleable iron body and cover, add suffix **-M**.
- PVC coating available on specified products. Add suffix **-PVC** to catalog number. To add PVC coating to items not specified, contact your local sales representative.

### Certifications and Compliances

- Class 1, Zone 1 & 2 IIA & IIB
- UL Listed: E10444
- CSA Standard: C22.2 No. 25, C22.2 No. 30
- CSA Certified: 013017



♦ In Class I, Division 1, Group B atmospheres, all conduit runs must have a sealing fitting (not supplied) field-installed adjacent to the enclosure.

# GR Conduit Outlet Boxes

## Explosionproof, Dust-Ignitionproof

UNILETS® for use with Threaded Metal Conduit. Furnished with Internal Ground Screw and O-Ring.

Class I, Division 1 and 2, Groups B♦, C, D  
 Class II, Division 1 and 2, Groups E, F, G  
 Class III  
 NEMA 3, 4

Enclosures and Junction Boxes

ENCLOSURES AND JUNCTION BOXES: HAZARDOUS LOCATION CONDUIT OUTLET BOXES

|   | Hub Type         | Conduit Size<br>(Inches)  | Cover Opening<br>Inches/Millimeters | Volume<br>Capacity<br>in <sup>3</sup> /dm <sup>3</sup> | Form<br>Number <sup>③</sup> | Catalog Number <sup>①</sup>                                |   |
|---|------------------|---|-------------------------------------|--|-----------------------------|--|---|
|   |                  |   |                                     |  |                             | Malleable Iron <sup>②</sup><br>Body With<br>Aluminum Cover | Aluminum<br>Body with<br>Aluminum Cover |
|    | GRE              | 1/2   | 3.38/85.9                           | 18.0/.29   | 1                           | GRE50  | GRE50-A                                 |
|   |                  | 3/4   | 3.38/85.9                           | 18.0/.29   | 1                           | GRE75  | GRE75-A                                 |
|   |                  | 1   | 3.38/85.9                           | 18.0/.29   | 1                           | GRE100   | GRE100-A                                |
|   |                  | 1-1/4   | 3.94/100.1                          | 31.0/.51   | 2                           | GRE125   | GRE125-A                                |
|   |                  | 1-1/2   | 4.88/124.0                          | 72.0/1.18  | 3                           | GRE150   | GRE150-A                                |
|    | GRC <sup>④</sup> | 1/2   | 3.38/85.9                           | 18.0/.29   | 1                           | GRC50  | GRC50-A                                 |
|   |                  | 3/4   | 3.38/85.9                           | 18.0/.29   | 1                           | GRC75  | GRC75-A                                 |
|   |                  | 1   | 3.38/85.9                           | 18.0/.29   | 1                           | GRC100   | GRC100-A                                |
|   |                  | 1-1/4   | 3.94/100.1                          | 31.0/.51   | 2                           | GRC125   | GRC125-A                                |
|   |                  | 1-1/2   | 4.88/124.0                          | 72.0/1.18  | 3                           | GRC150   | GRC150-A                                |
|   |                  | 2   | 4.88/124.0                          | 76.0/1.25  | 3                           | GRC200   | GRC200-A                                |
|   | GRL <sup>④</sup> | 1/2   | 3.38/85.9                           | 18.0/.29   | 1                           | GRL50  | GRL50-A                                 |
|   |                  | 3/4   | 3.38/85.9                           | 18.0/.29   | 1                           | GRL75  | GRL75-A                                 |
|   |                  | 1   | 3.38/85.9                           | 18.0/.29   | 1                           | GRL100   | GRL100-A                                |
|   |                  | 1-1/4   | 3.94/100.1                          | 31.0/.51   | 2                           | GRL125   | GRL125-A                                |
|   |                  | 1-1/2   | 4.88/124.0                          | 72.0/1.18  | 3                           | GRL150   | GRL150-A                                |
|   |                  | 2   | 4.88/124.0                          | 76.0/1.25  | 3                           | GRL200   | GRL200-A                                |
|   |                  |  | GRLB <sup>④</sup>                   | 1/2  | 3.38/85.9                   | 18.0/.29   | 1                                       |
| 3/4   | 3.38/85.9        |   |                                     | 18.0/.29   | 1                           | GRLB75   | GRLB75-A                                |
| 1   | 3.38/85.9        |   |                                     | 18.0/.29   | 1                           | GRLB100  | GRLB100-A                               |
| 1-1/4   | 3.94/100.1       |   |                                     | 31.0/.51   | 2                           | GRLB125  | GRLB125-A                               |
| 1-1/2   | 4.88/124.0       |   |                                     | 72.0/1.18  | 3                           | GRLB150  | GRLB150-A                               |
| 2   | 4.88/124.0       |   |                                     | 76.0/1.25  | 3                           | GRLB200  | GRLB200-A                               |
|  | GRN <sup>④</sup> |   |                                     | 1/2  | 3.38/85.9                   | 18.0/.29   | 1                                       |
|   |                  | 3/4   | 3.38/85.9                           | 18.0/.29   | 1                           | GRN75  | GRN75-A                                 |
|   |                  | 1   | 3.38/85.9                           | 18.0/.29   | 1                           | GRN100   | GRN100-A                                |
|   |                  | 1-1/4   | 3.94/100.1                          | 31.0/.51   | 2                           | GRN125   | GRN125-A                                |
|   |                  | 1-1/2   | 4.88/124.0                          | 72.0/1.18  | 3                           | GRN150   | GRN150-A                                |
|  | GRT <sup>④</sup> | 1/2   | 3.38/85.9                           | 18.0/.29   | 1                           | GRT50  | GRT50-A                                 |
|   |                  | 3/4   | 3.38/85.9                           | 18.0/.29   | 1                           | GRT75  | GRT75-A                                 |
|   |                  | 1   | 3.38/85.9                           | 18.0/.29   | 1                           | GRT100   | GRT100-A                                |
|   |                  | 1-1/4   | 3.94/100.1                          | 31.0/.51   | 2                           | GRT125   | GRT125-A                                |
|   |                  | 1-1/2   | 4.88/124.0                          | 72.0/1.18  | 3                           | GRT150   | GRT150-A                                |
|   |                  | 2   | 4.88/124.0                          | 76.0/1.25  | 3                           | GRT200   | GRT200-A                                |
|  | GRX <sup>④</sup> | 1/2   | 3.38/85.9                           | 18.0/.29   | 1                           | GRX50  | GRX50-A                                 |
|   |                  | 3/4   | 3.38/85.9                           | 18.0/.29   | 1                           | GRX75  | GRX75-A                                 |
|   |                  | 1   | 3.38/85.9                           | 18.0/.29   | 1                           | GRX100   | GRX100-A                                |
|   |                  | 1-1/4   | 3.94/100.1                          | 31.0/.51   | 2                           | GRX125   | GRX125-A                                |
|   |                  | 1-1/2   | 4.88/124.0                          | 72.0/1.18  | 3                           | GRX150   | GRX150-A                                |
|   |                  | 2   | 4.88/124.0                          | 76.0/1.25  | 3                           | GRX200   | GRX200-A                                |

♦ In Class I, Division 1, Group B atmospheres, all conduit runs must have a sealing fitting (not supplied) field-installed adjacent to the enclosure.

① Other covers available—see GR and GRF Conduit Outlet Box Covers page. Order separately.

② For malleable iron body and cover, add suffix **-M**.

③ Form number designates body and matching cover sizes. To order body without cover, add suffix **-LC** to catalog number.

④ PVC coating available, add suffix **-PVC** to catalog number.

# GR Conduit Outlet Boxes

## Explosionproof, Dust-Ignitionproof

UNILETS® for use with Threaded Metal Conduit. Furnished with Internal Ground Screw and O-Ring.

Class I, Division 1 and 2, Groups B♦, C, D  
 Class II, Division 1 and 2, Groups E, F, G  
 Class III  
 NEMA 3, 4

| Hub Type  | Conduit Size (Inches) | Cover Opening Inches/Millimeters | Volume Capacity in <sup>3</sup> /dm <sup>3</sup> | Form Number ③ | Catalog Number ①                          |                                   |
|---|-----------------------|----------------------------------|--|---------------|---|-----------------------------------|
|   |                       |                                  |  |               | Malleable Iron ② Body With Aluminum Cover | Aluminum Body with Aluminum Cover |
|  | 1/2                   | 3.38/85.9                        | 18.0/0.29  | 1             | GRCA50                                    | GRCA50-A                          |
|   | 3/4                   | 3.38/85.9                        | 18.0/0.29  | 1             | GRCA75                                    | GRCA75-A                          |
|  | 1/2                   | 3.38/85.9                        | 18.0/0.29  | 1             | GRLA50                                    | GRLA50-A                          |
|   | 3/4                   | 3.38/85.9                        | 18.0/0.29  | 1             | GRLA75                                    | GRLA75-A                          |
|  | 1/2                   | 3.38/85.9                        | 18.0/0.29  | 1             | GRTA50                                    | GRTA50-A                          |
|   | 3/4                   | 3.38/85.9                        | 18.0/0.29  | 1             | GRTA75                                    | GRTA75-A                          |

### Dimensions

| Hub Size (Inches)               | Dimensions in Inches/Millimeters |            |            |           |           |            |           |
|---------------------------------|----------------------------------|------------|------------|-----------|-----------|------------|-----------|
|                                 | A                                | B          | C          | D         | E         | F          | G         |
| <b>GR Series, Form 1</b>        |                                  |            |            |           |           |            |           |
| 1/2                             | 3.75/95.3                        | 2.44/62    | 2.88/73.2  | 0.75/19.1 | 0.81/20.6 | 2.25/57.2  | 1.25/31.8 |
| 3/4                             | 3.75/95.3                        | 2.44/62    | 2.88/73.2  | 0.75/19.1 | 0.81/20.6 | 2.25/57.2  | 1.25/31.8 |
| 1                               | 3.75/95.3                        | 2.44/62    | 2.88/73.2  | 0.94/23.9 | 0.94/23.9 | 2.25/57.2  | 1.06/26.9 |
| <b>GR Series, Forms 2 and 3</b> |                                  |            |            |           |           |            |           |
| 1-1/4                           | 4.50/114.3                       | 2.69/68.3  | 3.56/90.4  | 1.19/30.2 | 0.88/22.4 | 2.75/69.9  | 1.13/28.7 |
| 1-1/2                           | 5.75/146.1                       | 3.75/95.3  | 4.81/122.2 | 1.38/35.1 | 0.94/23.9 | 4.06/103.1 | 1.50/38.1 |
| 2                               | 5.75/146.1                       | 4.00/101.6 | 5.06/128.5 | 1.63/41.4 | 1/25.4    | 4.25/108.0 | 1.25/31.8 |





♦ In Class I, Division 1, Group B atmospheres, all conduit runs must have a sealing fitting (not supplied) field-installed adjacent to the enclosure.  
 ① Other covers available—see GR and GRF Conduit Outlet Box Covers page. Order separately.  
 ② For malleable iron body and cover, add suffix **-M**.  
 ③ Form number designates body and matching cover sizes. To order body without cover, add suffix **-LC** to catalog number.

# GRF Flanged Conduit Outlet Boxes





## Explosionproof, Dust-Ignitionproof

UNILETS® for use with Threaded Metal Conduit. Furnished with Internal Ground Screw and O-Ring.

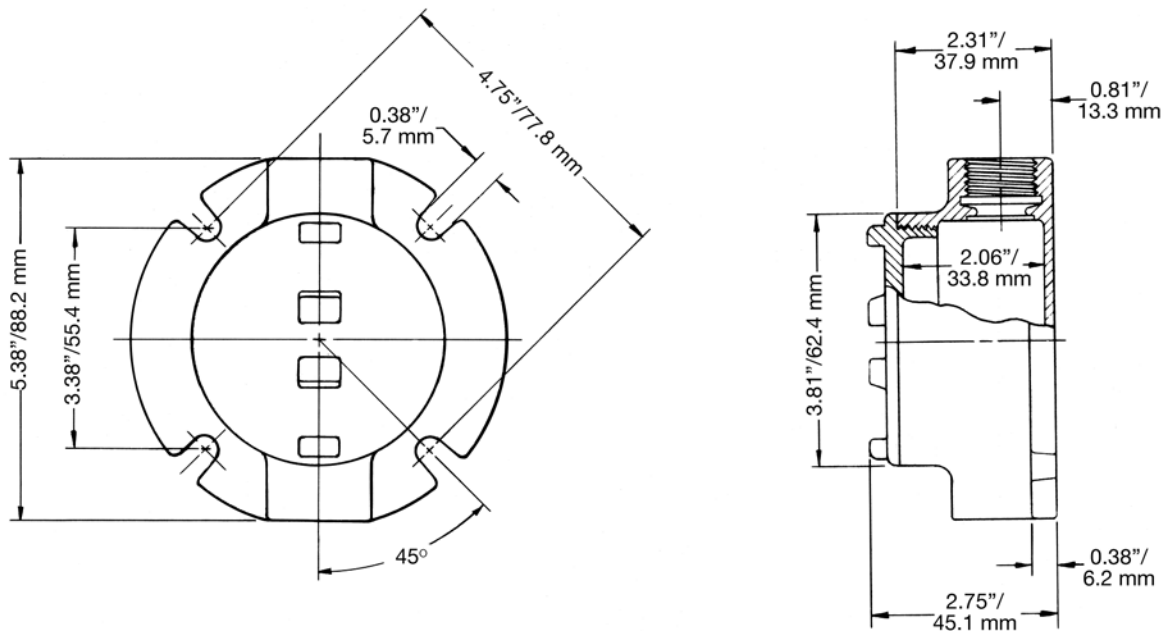
Class I, Division 1 and 2, Groups B♦, C, D  
 Class II, Division 1 and 2, Groups E, F, G  
 Class III  
 NEMA 3, 4

Enclosures and Junction Boxes

ENCLOSURES AND JUNCTION BOXES: HAZARDOUS LOCATION CONDUIT OUTLET BOXES

|  | Hub Type | Conduit Size (Inches) | Cover Opening Inches/Millimeters | Capacity in <sup>3</sup> /dm <sup>3</sup> | Form Number ③ | Catalog Number ①                          |                                   |
|--|----------|-----------------------|----------------------------------|---|---------------|---|-----------------------------------|
|  |          |                       |                                  |   |               | Malleable Iron ② Body With Aluminum Cover | Aluminum Body with Aluminum Cover |
|   | GRFC     | 1/2                   | 3.38/85.9                        | 18.0/0.29                                 | 1             | GRFC50                                    | GRFC50-A                          |
|  |          | 3/4                   | 3.38/85.9                        | 18.0/0.29                                 | 1             | GRFC75                                    | GRFC75-A                          |
|  |          | 1                     | 3.38/85.9                        | 18.0/0.29                                 | 1             | GRFC100                                   | GRFC100-A                         |
|   | GRFL     | 1/2                   | 3.38/85.9                        | 18.0/0.29                                 | 1             | GRFL50                                    | GRFL50-A                          |
|  |          | 3/4                   | 3.38/85.9                        | 18.0/0.29                                 | 1             | GRFL75                                    | GRFL75-A                          |
|  |          | 1                     | 3.38/85.9                        | 18.0/0.29                                 | 1             | GRFL100                                   | GRFL100-A                         |
|   | GRFT     | 1/2                   | 3.38/85.9                        | 18.0/0.29                                 | 1             | GRFT50                                    | GRFT50-A                          |
|  |          | 3/4                   | 3.38/85.9                        | 18.0/0.29                                 | 1             | GRFT75                                    | GRFT75-A                          |
|  |          | 1                     | 3.38/85.9                        | 18.0/0.29                                 | 1             | GRFT100                                   | GRFT100-A                         |
|  | GRFX     | 1/2                   | 3.38/85.9                        | 18.0/0.29                                 | 1             | GRFX50                                    | GRFX50-A                          |
|  |          | 3/4                   | 3.38/85.9                        | 18.0/0.29                                 | 1             | GRFX75                                    | GRFX75-A                          |
|  |          | 1                     | 3.38/85.9                        | 18.0/0.29                                 | 1             | GRFX100                                   | GRFX100-A                         |

### Dimensions



♦ In Class I, Division 1, Group B atmospheres, all conduit runs must have a sealing fitting (not supplied) field-installed adjacent to the enclosure.

① Other covers available—see GR and GRF Conduit Outlet Box Covers page. Order separately

② For malleable iron body and cover, add suffix **-M**.

③ Form number designates body and matching cover sizes. To order body without cover, add suffix **-LC** to catalog number.

# GR and GRF Conduit Outlet Box Covers

## Explosionproof, Dust-Ignitionproof

Covers and O-rings Fit Bodies with Corresponding Form Numbers.

Class I, Division 1 and 2, Groups B♦, C, D  
 Class II, Division 1 and 2, Groups E, F, G  
 Class III  
 NEMA 3, 4

|   | Hub Type   | Cover Opening<br>Inches/Millimeters | Fixture Stem Size<br>Inches/Millimeters | Form<br>Number ① | Catalog Number |           |
|---|--|-------------------------------------|---|------------------|----------------|-----------|
|   |  |                                     |   |                  | Malleable Iron | Aluminum  |
|    | Surface ②  | 3.38/85.9                           |   | 1                | GRK-1M         | GRK-1     |
|   |  | 3.94/100.1                          |   | 2                | GRK-2M         | GRK-2     |
|   |  | 4.88/124.0                          |   | 3                | GRK-3M         | GRK-3     |
|    | Sealing ②  | 3.38/85.9                           |   | 1                | GRK-1SC        | GRK-1SC-A |
|   |  | 3.94/100.1                          |   | 2                | GRK-2SC        | GRK-2SC-A |
|   |  | 4.88/124.0                          |   | 3                | GRK-3SC        | GRK-3SC-A |
|    | 2" Deep Dome<br><i>UL Listed: E185964</i>  | 3.38/85.9                           |   | 1                | —              | GRK-1DC   |
|   | Union Hub  | 3.38/85.9                           | 0.75/19.1                               | 1                | GRK-75U        | GRK-75UA  |
|    | Hub  | 3.38/85.9                           | 0.50/12.7                               | 1                | GRK-50         | GRK50-A   |
|   |  | 3.38/85.9                           | 0.75/19.1                               | 1                | GRK-75         | GRK75-A   |
|    | Canopy<br>Length 4-1/2"  | 3.38/85.9                           | 0.50/12.7                               | 1                | GRK-50C        | —         |
|   |  | 3.38/85.9                           | 0.75/19.1                               | 1                | GRK-75C        | —         |
|   |  | 3.38/85.9                           | 1.00/25.4                               | 1                | GRK-100C       | —         |
|   |  |                                     |   |                  | Catalog Number |           |
|    | <b>O-Rings — Buna-N</b>  |                                     |   |                  |                |           |
|   | Provide Raintight fit when used on following series:<br>GR (Forms 1, 2 and 3), GRF (Form 1), GRH, and GRU<br>(Form 1). |                                     |   | 1                | GRG-1          |           |
|   |  |                                     |   | 2                | GRG-2          |           |
|   |  |                                     | 3                                       | GRG-3            |                |           |
| <b>GRTB Terminal Strip</b>  |  |                                     |   |                  |                |           |
| <i>For use in standard GR series boxes Weidmuller type MK terminal block ③ with wire range of #22-#12 AWG. Mounts on 2 predrilled and tapped standard holes (furnished in internal GR boxes).</i> |  |                                     |   |                  |                |           |
|    | 6 position terminal block kit  |                                     |   | 1+2              | GRTB6-12       |           |
|   | 6 position terminal block kit  |                                     |   | 3                | GRTB6-3        |           |
|   | 12 position terminal block kit   |                                     |   | 3                | GRTB12-3       |           |

♦ In Class I, Division 1, Group B atmospheres, all conduit runs must have a sealing fitting (not supplied) field-installed adjacent to the enclosure.

① Form numbers designate cover and matching body sizes.

② PVC coating available, add suffix **-PVC** to catalog number.

③ Terminal block is UL listed for 300 Volt, 25 Amp. CSA certified for 300 Volt, 13 Amp.

# GR and GRF Conduit Outlet Boxes

## Explosionproof, Dust-Ignitionproof

UNILETS® for use with Threaded Metal Conduit. Furnished with Internal Ground Screw and O-Ring.

Class I, Division 1 and 2, Groups B♦, C, D  
Class II, Division 1 and 2, Groups E, F, G  
Class III  
NEMA 3, 4

### Applications

- Complies with a wide range of classified area requirements.
- Corrosion-resistant: ideal indoors or out.
- For pulling of wires.
- Connect conduit lengths and change direction of conduit runs.
- Provide access for maintenance.

### Features

- GR boxes offers ten hub arrangements.
- GRF boxes have integral mounting flange.
- Malleable iron bodies have high tensile strength, ductility and provides great resistance to corrosion, impact, and shock.
- Accurately tapped, tapered hub threads for tight, rigid joints and ground continuity.
- Furnished with covers.
- General purpose wiring.
- Function as sealing fittings when used with sealing covers (see NEC for restrictions).
- Internally threaded body with externally threaded cover.
- Covers have pry notches for bar or wrench.
- Accommodate sealing, dome, hub and union hub covers, and canopies.
- Standard O-rings provide raintight fit. NEMA 3, 4.
- Internal ground screw standard.
- Smooth, rounded integral bushing in each hub type box protects conductor insulation.

### Standard Materials

- Body: malleable iron or copperfree (4/10 of 1% max.) aluminum
- Cover: copperfree (4/10 of 1% max.) aluminum

### Standard Finishes

- Malleable iron bodies and covers: triple-coat — (1) zinc electroplate, (2) chromate, and (3) epoxy powder coat
- Aluminum bodies and covers: epoxy powder coat

### Options

- To order body without cover, add suffix **-LC** to catalog number.
- For malleable iron body and cover, add suffix **-M**.
- PVC coating available on specified products. Add suffix **-PVC** to catalog number. To add PVC coating to items not specified, contact your local sales representative.

### Certifications and Compliances

- Class 1, Zone 1 & 2 IIA & IIB
- UL Listed: E10444
- CSA Standard: C22.2 No. 25, C22.2 No. 30
- CSA Certified: 013017



♦ In Class I, Division 1, Group B atmospheres, all conduit runs must have a sealing fitting (not supplied) field-installed adjacent to the enclosure.

# GR Conduit Outlet Boxes

## Explosionproof, Dust-Ignitionproof

UNILETS® for use with Threaded Metal Conduit. Furnished with Internal Ground Screw and O-Ring.

Class I, Division 1 and 2, Groups B♦, C, D  
 Class II, Division 1 and 2, Groups E, F, G  
 Class III  
 NEMA 3, 4

Enclosures and Junction Boxes

ENCLOSURES AND JUNCTION BOXES: HAZARDOUS LOCATION CONDUIT OUTLET BOXES

|   | Hub Type   | Conduit Size<br>(Inches)  | Cover Opening<br>Inches/Millimeters | Volume<br>Capacity<br>in <sup>3</sup> /dm <sup>3</sup> | Form<br>Number ③ | Catalog Number ①                                |   |
|---|------------|---|-------------------------------------|--|------------------|---|---|
|   |            |   |                                     |  |                  | Malleable Iron ②<br>Body With<br>Aluminum Cover | Aluminum<br>Body with<br>Aluminum Cover |
|    | GRE        | 1/2   | 3.38/85.9                           | 18.0/.29   | 1                | GRE50   | GRE50-A                                 |
|   |            | 3/4   | 3.38/85.9                           | 18.0/.29   | 1                | GRE75   | GRE75-A                                 |
|   |            | 1   | 3.38/85.9                           | 18.0/.29   | 1                | GRE100  | GRE100-A                                |
|   |            | 1-1/4   | 3.94/100.1                          | 31.0/.51   | 2                | GRE125  | GRE125-A                                |
|   |            | 1-1/2   | 4.88/124.0                          | 72.0/1.18  | 3                | GRE150  | GRE150-A                                |
|    | GRC ④      | 1/2   | 3.38/85.9                           | 18.0/.29   | 1                | GRC50   | GRC50-A                                 |
|   |            | 3/4   | 3.38/85.9                           | 18.0/.29   | 1                | GRC75   | GRC75-A                                 |
|   |            | 1   | 3.38/85.9                           | 18.0/.29   | 1                | GRC100  | GRC100-A                                |
|   |            | 1-1/4   | 3.94/100.1                          | 31.0/.51   | 2                | GRC125  | GRC125-A                                |
|   |            | 1-1/2   | 4.88/124.0                          | 72.0/1.18  | 3                | GRC150  | GRC150-A                                |
|   |            | 2   | 4.88/124.0                          | 76.0/1.25  | 3                | GRC200  | GRC200-A                                |
|   | GRL ④      | 1/2   | 3.38/85.9                           | 18.0/.29   | 1                | GRL50   | GRL50-A                                 |
|   |            | 3/4   | 3.38/85.9                           | 18.0/.29   | 1                | GRL75   | GRL75-A                                 |
|   |            | 1   | 3.38/85.9                           | 18.0/.29   | 1                | GRL100  | GRL100-A                                |
|   |            | 1-1/4   | 3.94/100.1                          | 31.0/.51   | 2                | GRL125  | GRL125-A                                |
|   |            | 1-1/2   | 4.88/124.0                          | 72.0/1.18  | 3                | GRL150  | GRL150-A                                |
|   |            | 2   | 4.88/124.0                          | 76.0/1.25  | 3                | GRL200  | GRL200-A                                |
|   |            |  | GRLB ④                              | 1/2  | 3.38/85.9        | 18.0/.29  | 1                                       |
| 3/4   | 3.38/85.9  |   |                                     | 18.0/.29   | 1                | GRLB75  | GRLB75-A                                |
| 1   | 3.38/85.9  |   |                                     | 18.0/.29   | 1                | GRLB100   | GRLB100-A                               |
| 1-1/4   | 3.94/100.1 |   |                                     | 31.0/.51   | 2                | GRLB125   | GRLB125-A                               |
| 1-1/2   | 4.88/124.0 |   |                                     | 72.0/1.18  | 3                | GRLB150   | GRLB150-A                               |
| 2   | 4.88/124.0 |   |                                     | 76.0/1.25  | 3                | GRLB200   | GRLB200-A                               |
|  | GRN ④      | 1/2   | 3.38/85.9                           | 18.0/.29   | 1                | GRN50   | GRN50-A                                 |
|   |            | 3/4   | 3.38/85.9                           | 18.0/.29   | 1                | GRN75   | GRN75-A                                 |
|   |            | 1   | 3.38/85.9                           | 18.0/.29   | 1                | GRN100  | GRN100-A                                |
|   |            | 1-1/4   | 3.94/100.1                          | 31.0/.51   | 2                | GRN125  | GRN125-A                                |
|   |            | 1-1/2   | 4.88/124.0                          | 72.0/1.18  | 3                | GRN150  | GRN150-A                                |
|  | GRT ④      | 1/2   | 3.38/85.9                           | 18.0/.29   | 1                | GRT50   | GRT50-A                                 |
|   |            | 3/4   | 3.38/85.9                           | 18.0/.29   | 1                | GRT75   | GRT75-A                                 |
|   |            | 1   | 3.38/85.9                           | 18.0/.29   | 1                | GRT100  | GRT100-A                                |
|   |            | 1-1/4   | 3.94/100.1                          | 31.0/.51   | 2                | GRT125  | GRT125-A                                |
|   |            | 1-1/2   | 4.88/124.0                          | 72.0/1.18  | 3                | GRT150  | GRT150-A                                |
|   |            | 2   | 4.88/124.0                          | 76.0/1.25  | 3                | GRT200  | GRT200-A                                |
|  | GRX ④      | 1/2   | 3.38/85.9                           | 18.0/.29   | 1                | GRX50   | GRX50-A                                 |
|   |            | 3/4   | 3.38/85.9                           | 18.0/.29   | 1                | GRX75   | GRX75-A                                 |
|   |            | 1   | 3.38/85.9                           | 18.0/.29   | 1                | GRX100  | GRX100-A                                |
|   |            | 1-1/4   | 3.94/100.1                          | 31.0/.51   | 2                | GRX125  | GRX125-A                                |
|   |            | 1-1/2   | 4.88/124.0                          | 72.0/1.18  | 3                | GRX150  | GRX150-A                                |
|   |            | 2   | 4.88/124.0                          | 76.0/1.25  | 3                | GRX200  | GRX200-A                                |

♦ In Class I, Division 1, Group B atmospheres, all conduit runs must have a sealing fitting (not supplied) field-installed adjacent to the enclosure.

① Other covers available—see GR and GRF Conduit Outlet Box Covers page. Order separately.

② For malleable iron body and cover, add suffix **-M**.

③ Form number designates body and matching cover sizes. To order body without cover, add suffix **-LC** to catalog number.




④ PVC coating available, add suffix **-PVC** to catalog number.

# GR Conduit Outlet Boxes

## Explosionproof, Dust-Ignitionproof

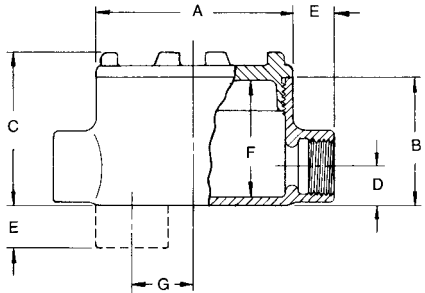
UNILETS® for use with Threaded Metal Conduit. Furnished with Internal Ground Screw and O-Ring.

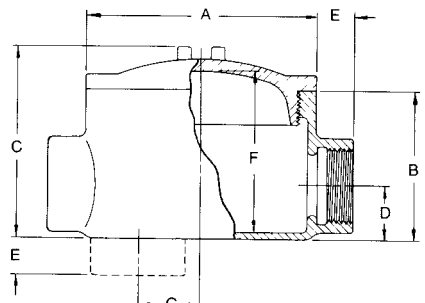
Class I, Division 1 and 2, Groups B♦, C, D  
 Class II, Division 1 and 2, Groups E, F, G  
 Class III  
 NEMA 3, 4

| Hub Type  | Conduit Size (Inches) | Cover Opening Inches/Millimeters | Volume Capacity in <sup>3</sup> /dm <sup>3</sup> | Form Number ③ | Catalog Number ①                          |                                   |
|---|-----------------------|----------------------------------|--|---------------|---|-----------------------------------|
|   |                       |                                  |  |               | Malleable Iron ② Body With Aluminum Cover | Aluminum Body with Aluminum Cover |
|  | 1/2                   | 3.38/85.9                        | 18.0/0.29  | 1             | GRCA50                                    | GRCA50-A                          |
|   | 3/4                   | 3.38/85.9                        | 18.0/0.29  | 1             | GRCA75                                    | GRCA75-A                          |
|  | 1/2                   | 3.38/85.9                        | 18.0/0.29  | 1             | GRLA50                                    | GRLA50-A                          |
|   | 3/4                   | 3.38/85.9                        | 18.0/0.29  | 1             | GRLA75                                    | GRLA75-A                          |
|  | 1/2                   | 3.38/85.9                        | 18.0/0.29  | 1             | GRTA50                                    | GRTA50-A                          |
|   | 3/4                   | 3.38/85.9                        | 18.0/0.29  | 1             | GRTA75                                    | GRTA75-A                          |

### Dimensions

| Hub Size (Inches)               | Dimensions in Inches/Millimeters |            |            |           |           |            |           |
|---------------------------------|----------------------------------|------------|------------|-----------|-----------|------------|-----------|
|                                 | A                                | B          | C          | D         | E         | F          | G         |
| <b>GR Series, Form 1</b>        |                                  |            |            |           |           |            |           |
| 1/2                             | 3.75/95.3                        | 2.44/62    | 2.88/73.2  | 0.75/19.1 | 0.81/20.6 | 2.25/57.2  | 1.25/31.8 |
| 3/4                             | 3.75/95.3                        | 2.44/62    | 2.88/73.2  | 0.75/19.1 | 0.81/20.6 | 2.25/57.2  | 1.25/31.8 |
| 1                               | 3.75/95.3                        | 2.44/62    | 2.88/73.2  | 0.94/23.9 | 0.94/23.9 | 2.25/57.2  | 1.06/26.9 |
| <b>GR Series, Forms 2 and 3</b> |                                  |            |            |           |           |            |           |
| 1-1/4                           | 4.50/114.3                       | 2.69/68.3  | 3.56/90.4  | 1.19/30.2 | 0.88/22.4 | 2.75/69.9  | 1.13/28.7 |
| 1-1/2                           | 5.75/146.1                       | 3.75/95.3  | 4.81/122.2 | 1.38/35.1 | 0.94/23.9 | 4.06/103.1 | 1.50/38.1 |
| 2                               | 5.75/146.1                       | 4.00/101.6 | 5.06/128.5 | 1.63/41.4 | 1/25.4    | 4.25/108.0 | 1.25/31.8 |





♦ In Class I, Division 1, Group B atmospheres, all conduit runs must have a sealing fitting (not supplied) field-installed adjacent to the enclosure.

① Other covers available—see GR and GRF Conduit Outlet Box Covers page. Order separately.

② For malleable iron body and cover, add suffix **-M**.

③ Form number designates body and matching cover sizes. To order body without cover, add suffix **-LC** to catalog number.



# GRF Flanged Conduit Outlet Boxes

## Explosionproof, Dust-Ignitionproof

UNILETS® for use with Threaded Metal Conduit. Furnished with Internal Ground Screw and O-Ring.

Class I, Division 1 and 2, Groups B♦, C, D  
 Class II, Division 1 and 2, Groups E, F, G  
 Class III  
 NEMA 3, 4

Enclosures and Junction Boxes

ENCLOSURES AND JUNCTION BOXES: HAZARDOUS LOCATION CONDUIT OUTLET BOXES

|  | Hub Type | Conduit Size (Inches) | Cover Opening Inches/Millimeters | Capacity in <sup>3</sup> /dm <sup>3</sup> | Form Number ③ | Catalog Number ①                          |                                   |
|--|----------|-----------------------|----------------------------------|---|---------------|---|-----------------------------------|
|  |          |                       |                                  |   |               | Malleable Iron ② Body With Aluminum Cover | Aluminum Body with Aluminum Cover |
|   | GRFC     | 1/2                   | 3.38/85.9                        | 18.0/0.29                                 | 1             | GRFC50                                    | GRFC50-A                          |
|  |          | 3/4                   | 3.38/85.9                        | 18.0/0.29                                 | 1             | GRFC75                                    | GRFC75-A                          |
|  |          | 1                     | 3.38/85.9                        | 18.0/0.29                                 | 1             | GRFC100                                   | GRFC100-A                         |
|   | GRFL     | 1/2                   | 3.38/85.9                        | 18.0/0.29                                 | 1             | GRFL50                                    | GRFL50-A                          |
|  |          | 3/4                   | 3.38/85.9                        | 18.0/0.29                                 | 1             | GRFL75                                    | GRFL75-A                          |
|  |          | 1                     | 3.38/85.9                        | 18.0/0.29                                 | 1             | GRFL100                                   | GRFL100-A                         |
|   | GRFT     | 1/2                   | 3.38/85.9                        | 18.0/0.29                                 | 1             | GRFT50                                    | GRFT50-A                          |
|  |          | 3/4                   | 3.38/85.9                        | 18.0/0.29                                 | 1             | GRFT75                                    | GRFT75-A                          |
|  |          | 1                     | 3.38/85.9                        | 18.0/0.29                                 | 1             | GRFT100                                   | GRFT100-A                         |
|  | GRFX     | 1/2                   | 3.38/85.9                        | 18.0/0.29                                 | 1             | GRFX50                                    | GRFX50-A                          |
|  |          | 3/4                   | 3.38/85.9                        | 18.0/0.29                                 | 1             | GRFX75                                    | GRFX75-A                          |
|  |          | 1                     | 3.38/85.9                        | 18.0/0.29                                 | 1             | GRFX100                                   | GRFX100-A                         |

### Dimensions



♦ In Class I, Division 1, Group B atmospheres, all conduit runs must have a sealing fitting (not supplied) field-installed adjacent to the enclosure.

① Other covers available—see GR and GRF Conduit Outlet Box Covers page. Order separately

② For malleable iron body and cover, add suffix **-M**.

③ Form number designates body and matching cover sizes. To order body without cover, add suffix **-LC** to catalog number.

# GR and GRF Conduit Outlet Box Covers

## Explosionproof, Dust-Ignitionproof

Covers and O-rings Fit Bodies with Corresponding Form Numbers.

Class I, Division 1 and 2, Groups B♦, C, D  
 Class II, Division 1 and 2, Groups E, F, G  
 Class III  
 NEMA 3, 4

|   | Hub Type   | Cover Opening<br>Inches/Millimeters | Fixture Stem Size<br>Inches/Millimeters | Form<br>Number ① | Catalog Number |           |
|---|--|-------------------------------------|---|------------------|----------------|-----------|
|   |  |                                     |   |                  | Malleable Iron | Aluminum  |
|    | Surface ②  | 3.38/85.9                           |   | 1                | GRK-1M         | GRK-1     |
|   |  | 3.94/100.1                          |   | 2                | GRK-2M         | GRK-2     |
|   |  | 4.88/124.0                          |   | 3                | GRK-3M         | GRK-3     |
|    | Sealing ②  | 3.38/85.9                           |   | 1                | GRK-1SC        | GRK-1SC-A |
|   |  | 3.94/100.1                          |   | 2                | GRK-2SC        | GRK-2SC-A |
|   |  | 4.88/124.0                          |   | 3                | GRK-3SC        | GRK-3SC-A |
|    | 2" Deep Dome<br><i>UL Listed: E185964</i>  | 3.38/85.9                           |   | 1                | —              | GRK-1DC   |
|   | Union Hub  | 3.38/85.9                           | 0.75/19.1                               | 1                | GRK-75U        | GRK-75UA  |
|    | Hub  | 3.38/85.9                           | 0.50/12.7                               | 1                | GRK-50         | GRK50-A   |
|   |  | 3.38/85.9                           | 0.75/19.1                               | 1                | GRK-75         | GRK75-A   |
|    | Canopy<br>Length 4-1/2"  | 3.38/85.9                           | 0.50/12.7                               | 1                | GRK-50C        | —         |
|   |  | 3.38/85.9                           | 0.75/19.1                               | 1                | GRK-75C        | —         |
|   |  | 3.38/85.9                           | 1.00/25.4                               | 1                | GRK-100C       | —         |
|   |  |                                     |   |                  | Catalog Number |           |
|    | <b>O-Rings — Buna-N</b>  |                                     |   |                  |                |           |
|   | Provide Raintight fit when used on following series:<br>GR (Forms 1, 2 and 3), GRF (Form 1), GRH, and GRU<br>(Form 1). |                                     |   | 1                | GRG-1          |           |
|   |  |                                     |   | 2                | GRG-2          |           |
|   |  |                                     | 3                                       | GRG-3            |                |           |
| <b>GRTB Terminal Strip</b>  |  |                                     |   |                  |                |           |
| <i>For use in standard GR series boxes Weidmuller type MK terminal block ③ with wire range of #22-#12 AWG.<br/>Mounts on 2 predrilled and tapped standard holes (furnished in internal GR boxes).</i> |  |                                     |   |                  |                |           |
|    | 6 position terminal block kit  |                                     |   | 1+2              | GRTB6-12       |           |
|   | 6 position terminal block kit  |                                     |   | 3                | GRTB6-3        |           |
|   | 12 position terminal block kit   |                                     |   | 3                | GRTB12-3       |           |

♦ In Class I, Division 1, Group B atmospheres, all conduit runs must have a sealing fitting (not supplied) field-installed adjacent to the enclosure.

① Form numbers designate cover and matching body sizes.

② PVC coating available, add suffix **-PVC** to catalog number.

③ Terminal block is UL listed for 300 Volt, 25 Amp. CSA certified for 300 Volt, 13 Amp.