

**NEW!**

# Floor Box Kits FLBR6500 series

*One-Piece Non-Metallic Box with Steel Bracket, Plastic Cover*

**EASY  
SECURE  
INSTALLATION**  
5 DECORATOR  
COLORS

**NEW!**  
PLASTIC BOX  
with SPRING CLIP



FLBR6500LA  
Light Almond

FLBR6500CA  
Caramel

Arlington's **FLOOR BOX KITS** with round plastic boxes and plastic covers offer easy, secure installation in existing floors. *AND great-looking results!*

The gasketed plastic covers come with a decorator-style receptacle and a single flip lid in five designer colors: white, light almond, brown, gray and caramel. They cover miscut openings, and install nearly flush with the floor, preventing damage to devices in the box.



FLBR6500BR  
Brown

**Easy, secure installation**

FLBR6500 series floor boxes install quickly and easily in an *existing* floor with a 5" hole saw. A bendable steel spring clip holds the box securely against the subfloor when the captive screws are tightened.

- For floors up to 1-1/2" thick
- UL Listed



**1** Using a hole saw cut a 5" diameter opening in the floor and subfloor.



**2** Pull wire through supplied NM cable connector. Insert box, bending the clip as necessary to fit through the opening.



**3** Rotate box to desired orientation. Tighten #10-32 screws to pull box securely against the underside of subfloor.



**Underside of subfloor**

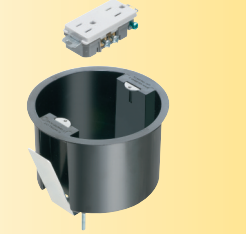
**Round Plastic Box with Plastic Cover**

Catalog Number	UPC/DEI/NAED Mfg. #018997	Description Cover Color	Unit/Std Pkg
FLBR6500W	23168	White	1
FLBR6500LA	52323	Light Almond	1
FLBR6500GY	52322	Gray	1
FLBR6500CA	52321	Caramel	1
FLBR6500BR	52320	Brown	1

Kit includes non-metallic floor box, plastic cover with single flip lid, cover cap, 15A decorator-style receptacle, (2) #6-32 x 1" screws, NM94 and NM95 cable connectors



FLBR6500W  
White



FLBR6500GY  
Gray



**4** Fasten cover on box using the two #6-32 x 1" screws provided.



**Arlington**  
1 Stauffer Industrial Park  
Scranton, PA 18517  
**800/233.4717**  
**Fax 570/562.0646**  
**www.aifittings.com**



# Another Floor Box Option FLBT6520 series

with Brass or Nickel-plated Brass Trapdoor Covers • 20A Receptacle

Installs just like FLBR6500 series *in a FLOOR*



1 Cut a 5" diameter opening. Insert box.



2 Secure box by tightening two #10 screws inside box.



FLBT6520MB

3 Wire receptacle.



FLBT6520UMB

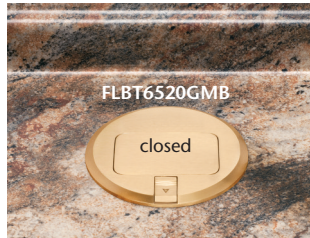
or a *COUNTERTOP*



4 Install trapdoor coverplate to box using the two #6-32 screws provided. Round cover hides miscut openings



6 Rotate box/cover assembly into position, lining it up parallel with backsplash, if installing in a countertop.



FLBT6520GMB

PARALLEL Installation

**NEW!**  
PLASTIC BOX  
with SPRING CLIP

**NO  
GLUING!**  
THREE 20A  
RECEPTACLE  
OPTIONS

## Plastic Box with Metal Covers

Catalog Number	UPC/DEI/NAED Mfg. #018997	Description Metal Cover Finish	Installed UL LISTED Device	Unit/Std Pkg
FLBT6520UMB	22056	Brass	20A decorator-style TR receptacle, with (2) USB ports	1
FLBT6520MB	22112	Brass	20A decorator-style Tamper Resistant receptacle	1
FLBT6520GMB	22110	Brass	20A decorator-style Tamper Resistant GFCI receptacle	1
FLBT6520UNL	22057	Nickel-plated Brass	20A decorator-style TR receptacle, with (2) USB ports	1
FLBT6520NL	22113	Nickel-plated Brass	20A decorator-style Tamper Resistant receptacle	1
FLBT6520GNL	22111	Nickel-plated Brass	20A decorator-style Tamper Resistant GFCI receptacle	1



FLBT6520MB



FLBT6520GMB



FLBT6520UMB



FLBT6520NL



FLBT6520GNL



FLBT6520UNL

with 20A decorator-style TR receptacle

with 20A decorator-style TR, GFCI receptacle

with 20A decorator-style TR receptacle w (2) USB ports



**Arlington**

1 Stauffer Industrial Park  
Scranton, PA 18517  
800/233.4717  
Fax 570/562.0646  
www.aifittings.com

Visit our website to see our entire line of floor box kits, boxes, cover trim kits and accessories

Distributed by



NEW!

# Floor Box Kits FLBR6500 series

One-Piece Non-Metallic Box with Steel Bracket, Plastic Cover

**EASY  
SECURE  
INSTALLATION**  
5 DECORATOR  
COLORS

**NEW!**  
PLASTIC BOX  
with SPRING CLIP



FLBR6500LA  
Light Almond

FLBR6500CA  
Caramel

Arlington's **FLOOR BOX KITS** with round plastic boxes and plastic covers offer easy, secure installation in existing floors. *AND great-looking results!*

The gasketed plastic covers come with a decorator-style receptacle and a single flip lid in five designer colors: white, light almond, brown, gray and caramel. They cover miscut openings, and install nearly flush with the floor, preventing damage to devices in the box.



FLBR6500BR  
Brown

**Easy, secure installation**

FLBR6500 series floor boxes install quickly and easily in an *existing* floor with a 5" hole saw. A bendable steel spring clip holds the box securely against the subfloor when the captive screws are tightened.

- For floors up to 1-1/2" thick
- UL Listed



1 Using a hole saw cut a 5" diameter opening in the floor and subfloor.



2 Pull wire through supplied NM cable connector. Insert box, bending the clip as necessary to fit through the opening.



3 Rotate box to desired orientation. Tighten #10-32 screws to pull box securely against the underside of subfloor.



Underside of subfloor

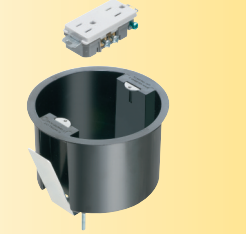
Round Plastic Box with Plastic Cover

Catalog Number	UPC/DEI/NAED Mfg. #018997	Description Cover Color	Unit/Std Pkg
FLBR6500W	23168	White	1
FLBR6500LA	52323	Light Almond	1
FLBR6500GY	52322	Gray	1
FLBR6500CA	52321	Caramel	1
FLBR6500BR	52320	Brown	1

Kit includes non-metallic floor box, plastic cover with single flip lid, cover cap, 15A decorator-style receptacle, (2) #6-32 x 1" screws, NM94 and NM95 cable connectors



FLBR6500W  
White



FLBR6500GY  
Gray



4 Fasten cover on box using the two #6-32 x 1" screws provided.



**Arlington**  
1 Stauffer Industrial Park  
Scranton, PA 18517  
**800/233.4717**  
**Fax 570/562.0646**  
**www.aifittings.com**



# Another Floor Box Option FLBT6520 series

with Brass or Nickel-plated Brass Trapdoor Covers • 20A Receptacle

Installs just like FLBR6500 series *in a FLOOR*



1 Cut a 5" diameter opening. Insert box.



2 Secure box by tightening two #10 screws inside box.



FLBT6520MB

3 Wire receptacle.



FLBT6520UMB

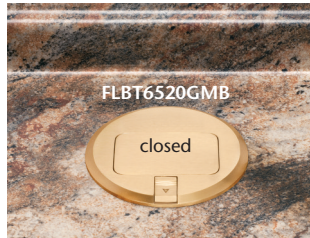
or a *COUNTERTOP*



4 Install trapdoor coverplate to box using the two #6-32 screws provided. Round cover hides miscut openings



6 Rotate box/cover assembly into position, lining it up parallel with backsplash, if installing in a countertop.



FLBT6520GMB

PARALLEL Installation

**NEW!**  
PLASTIC BOX  
with SPRING CLIP

**NO GLUING!**  
THREE 20A  
RECEPTACLE  
OPTIONS

## Plastic Box with Metal Covers

Catalog Number	UPC/DEI/NAED Mfg. #018997	Description Metal Cover Finish	Installed UL LISTED Device	Unit/Std Pkg
FLBT6520UMB	22056	Brass	20A decorator-style TR receptacle, with (2) USB ports	1
FLBT6520MB	22112	Brass	20A decorator-style Tamper Resistant receptacle	1
FLBT6520GMB	22110	Brass	20A decorator-style Tamper Resistant GFCI receptacle	1
FLBT6520UNL	22057	Nickel-plated Brass	20A decorator-style TR receptacle, with (2) USB ports	1
FLBT6520NL	22113	Nickel-plated Brass	20A decorator-style Tamper Resistant receptacle	1
FLBT6520GNL	22111	Nickel-plated Brass	20A decorator-style Tamper Resistant GFCI receptacle	1



FLBT6520MB



FLBT6520GMB



FLBT6520UMB



FLBT6520NL

with 20A decorator-style TR receptacle



FLBT6520GNL

with 20A decorator-style TR, GFCI receptacle



FLBT6520UNL

with 20A decorator-style TR receptacle w (2) USB ports



**Arlington**

1 Stauffer Industrial Park  
Scranton, PA 18517  
800/233.4717  
Fax 570/562.0646  
www.aifittings.com

Visit our website to see our entire line of floor box kits, boxes, cover trim kits and accessories

Distributed by