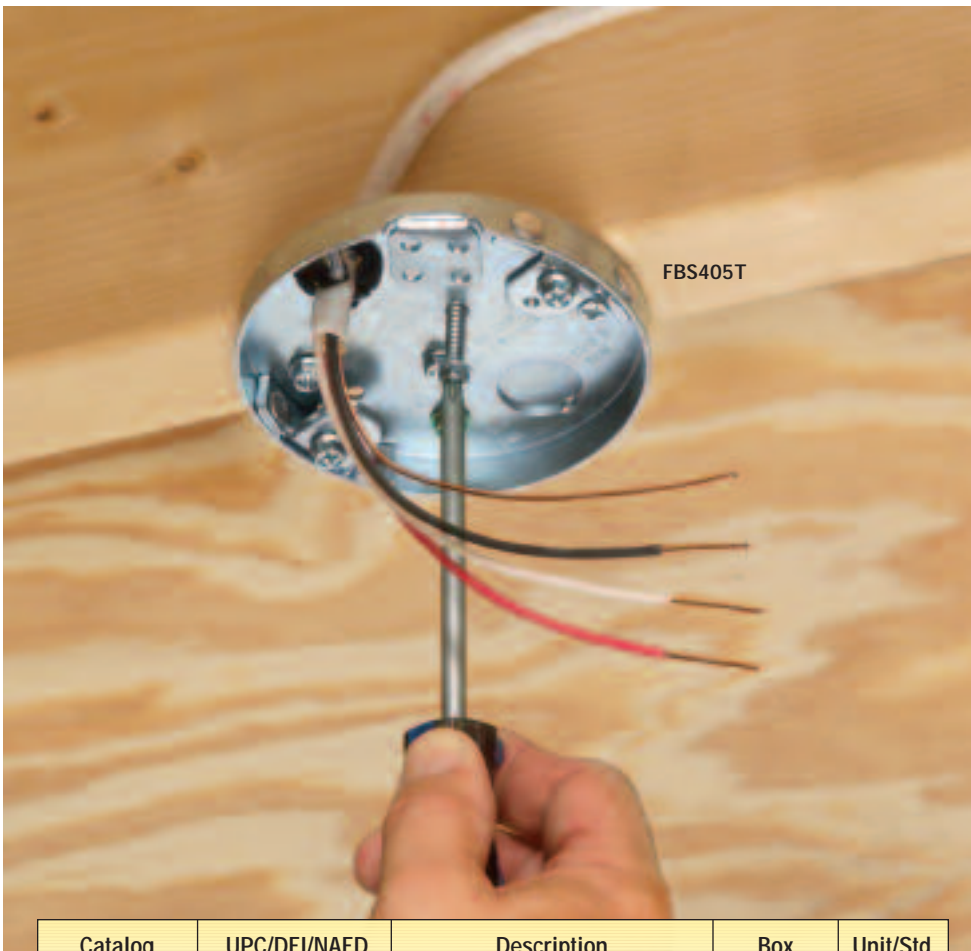


**NEW!**  
See reverse

# Steel Pan Box for Fans & Fixtures

*Joist Mount – with Threaded Openings*



Arlington's new steel pan boxes for fans or fixtures, mount directly to a joist for installation security you can count on.

**Threaded openings**

In these boxes, the fan/fixture bracket attaches to the box through threaded openings with #10 screws (supplied).

For added convenience and time-savings, installation screws ship captive, so there are no parts to lose! Plus, the NM cable connector is already installed.

*FBS405T for 1/2" or 5/8" ceilings,  
FBS407T for 5/8" ceilings*

- Competitively priced
- Strong, secure installation directly to the joist
- Plated steel finish
- UL rated: 70 lb fan, 200 lb fixture  
CSA rated: 50 lb fan or fixture
- Include installation screws, installed NM cable connector, mud cover, additional KOs and four bracket installation screws (screwed in place until removed/used by installer).



**Arlington**  
1 Stauffer Industrial Park  
Scranton, PA 18517  
800/233.4717  
Fax 570/562.0646  
www.aifittings.com

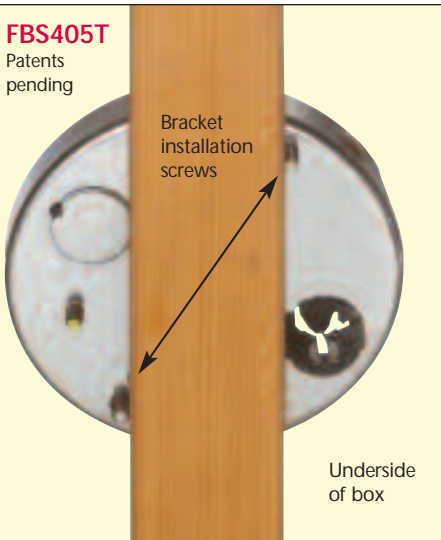
Catalog Number	UPC/DEI/NAED Mfg. #018997	Description	Box Capacity	Unit/Std Pkg
<b>FBS405T</b>	40500	Steel fan/fixture pan box	6.0 cu. in.	25
<b>FBS407T</b>	40700	For 1/2" or 5/8" drywall For 5/8" drywall	8.0 cu. in.	25

Patents pending

# Steel Pan Box for Fans & Fixtures

*Super-secure Joist Mount Installation • Plated Steel*

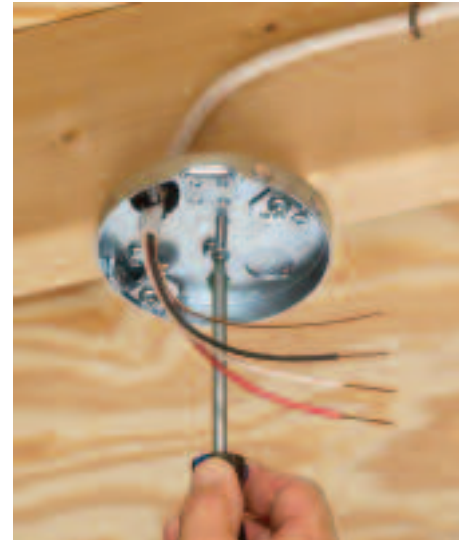
**FBS405T**  
Patents pending



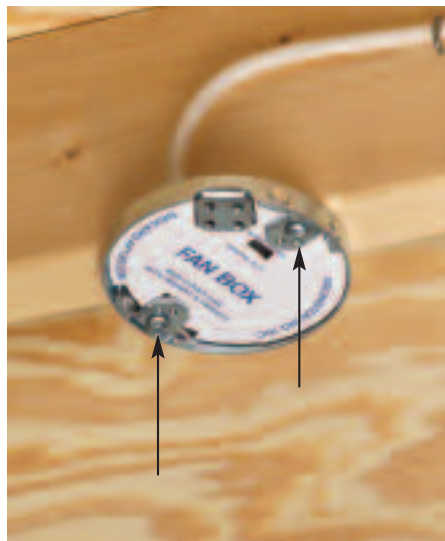
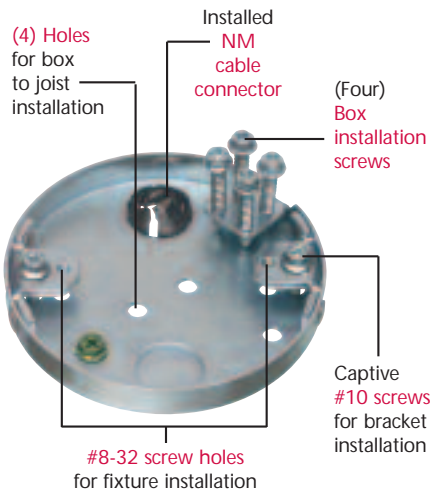
**1** Use bracket installation screws to position box on joist. (underside of box, against joist shown above)



**2** Remove mud cover. Remove four box installation screws (shipped in place). Use these screws to install box to joist through pre-drilled holes.



**3** Pull NM cable through installed NM cable connector – or where metal raceway is required by code, remove NM cable connector and install appropriate fitting.



**4** Replace the mud cover. Remove the #10 screws indicated above...



**5** ...and use them to install the fan bracket.

Note: If installing a light fixture, use the #8-32 screw holes in the mounting tab for the fixture installation (#8 screws not supplied).

Distributed by



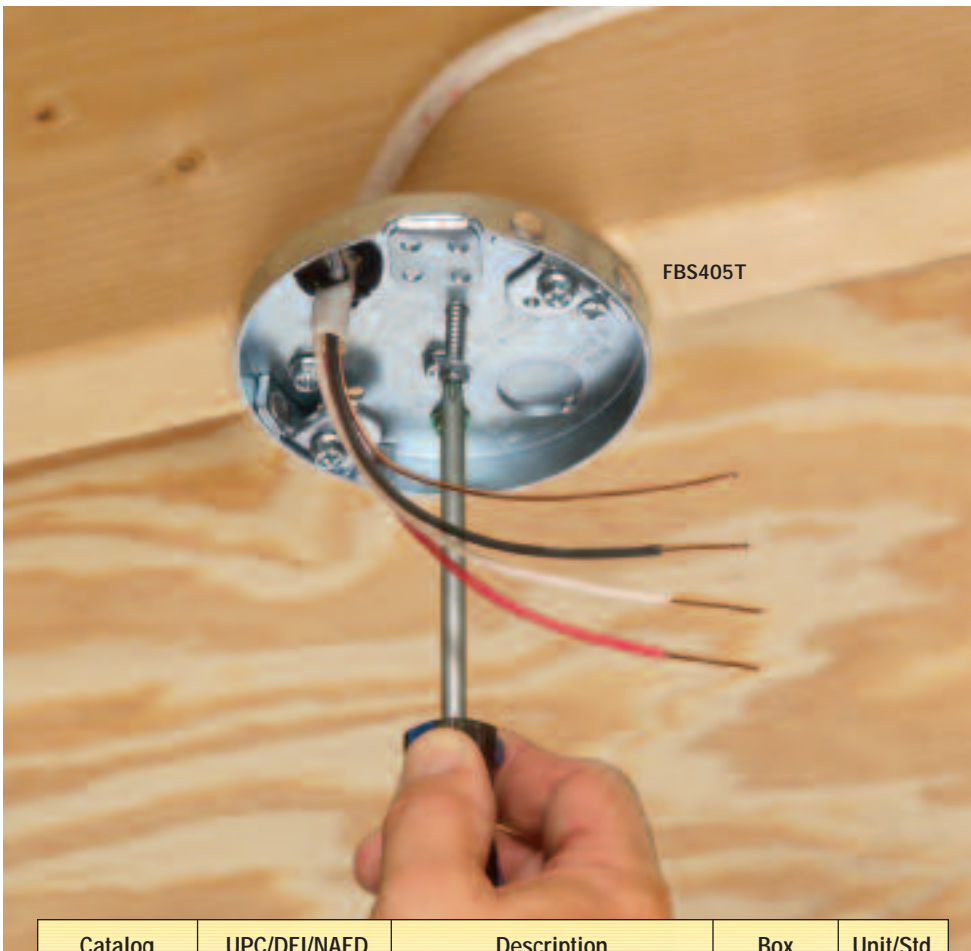
**Arlington**  
1 Stauffer Industrial Park  
Scranton, PA 18517  
800/233.4717  
Fax 570/562.0646  
www.aifittings.com

FBS405T 0108/50M

**NEW!**  
See reverse

# Steel Pan Box for Fans & Fixtures

*Joist Mount – with Threaded Openings*



Arlington's new steel pan boxes for fans or fixtures, mount directly to a joist for installation security you can count on.

**Threaded openings**

In these boxes, the fan/fixture bracket attaches to the box through threaded openings with #10 screws (supplied).

For added convenience and time-savings, installation screws ship captive, so there are no parts to lose! Plus, the NM cable connector is already installed.

**FBS405T for 1/2" or 5/8" ceilings,**  
**FBS407T for 5/8" ceilings**

- Competitively priced
- Strong, secure installation directly to the joist
- Plated steel finish
- UL rated: 70 lb fan, 200 lb fixture  
CSA rated: 50 lb fan or fixture
- Include installation screws, installed NM cable connector, mud cover, additional KOs and four bracket installation screws (screwed in place until removed/used by installer).



**Arlington**  
1 Stauffer Industrial Park  
Scranton, PA 18517  
**800/233.4717**  
**Fax 570/562.0646**  
[www.aifittings.com](http://www.aifittings.com)

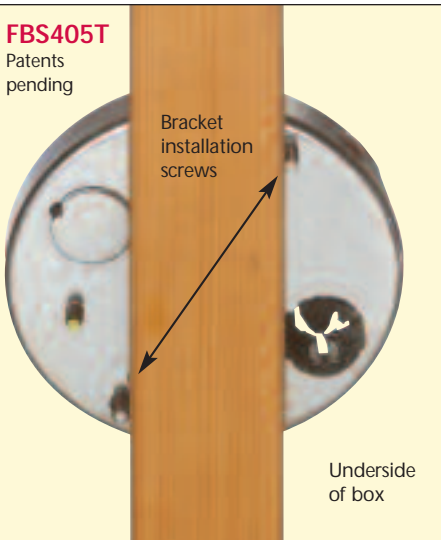
Catalog Number	UPC/DEI/NAED Mfg. #018997	Description	Box Capacity	Unit/Std Pkg
<b>FBS405T</b>	40500	Steel fan/fixture pan box	6.0 cu. in.	25
<b>FBS407T</b>	40700	For 1/2" or 5/8" drywall For 5/8" drywall	8.0 cu. in.	25

Patents pending

# Steel Pan Box for Fans & Fixtures

*Super-secure Joist Mount Installation • Plated Steel*

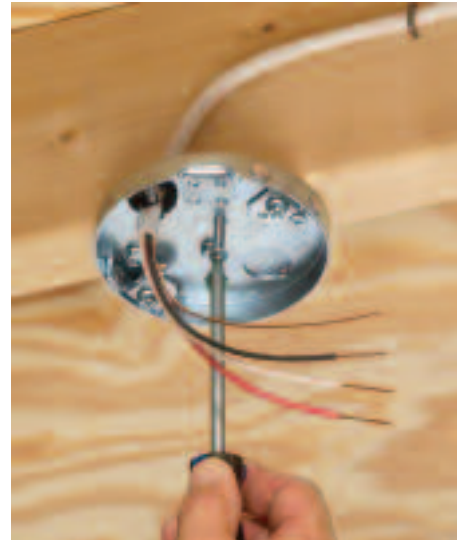
**FBS405T**  
Patents pending



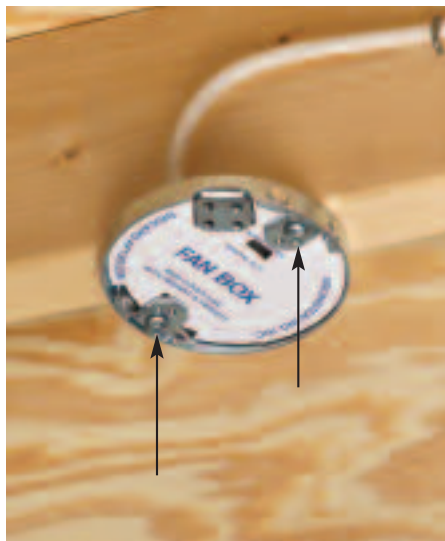
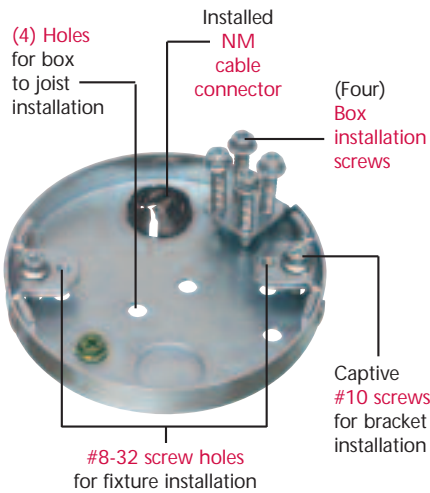
**1** Use bracket installation screws to position box on joist. (underside of box, against joist shown above)



**2** Remove mud cover. Remove four box installation screws (shipped in place). Use these screws to install box to joist through pre-drilled holes.



**3** Pull NM cable through installed NM cable connector – or where metal raceway is required by code, remove NM cable connector and install appropriate fitting.



**4** Replace the mud cover. Remove the #10 screws indicated above...



**5** ...and use them to install the fan bracket.

Note: If installing a light fixture, use the #8-32 screw holes in the mounting tab for the fixture installation (#8 screws not supplied).



**Arlington**  
1 Stauffer Industrial Park  
Scranton, PA 18517  
800/233.4717  
Fax 570/562.0646  
www.aifittings.com

FBS405T 0108/50M

Distributed by