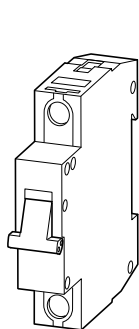


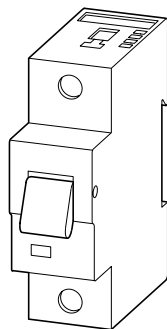
Montageanweisung  
Installation Instructions  
Notice d'installation  
Istruzioni per il montaggio

Instrucciones de montaje  
Инструкция по монтажу  
安装说明

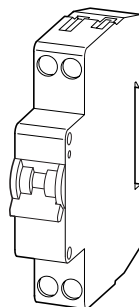
**FAZ-...**  
**AZ-...**



FAZ-...



AZ-...



FAZ-PN-...



### Lebensgefahr durch elektrischen Strom!

Nur Elektrofachkräfte und elektrotechnisch unterwiesene Personen dürfen die im Folgenden beschriebenen Arbeiten ausführen.

### Electric current! Danger to life!

Only skilled or instructed persons may carry out the following operations.

### Tension électrique dangereuse !

Seules les personnes qualifiées et averties doivent exécuter les travaux ci-après.

### Tensione elettrica: Pericolo di morte!

Solo persone abilitate e qualificate possono eseguire le operazioni di seguito riportate.

### ¡Corriente eléctrica! ¡Peligro de muerte!

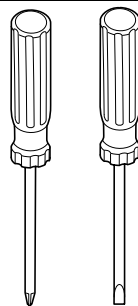
El trabajo a continuación descrito debe ser realizado por personas cualificadas y advertidas.

### Электрический ток! Опасно для жизни!



Только специалисты или проинструктированные лица могут выполнять следующие операции.

### 触电危险!

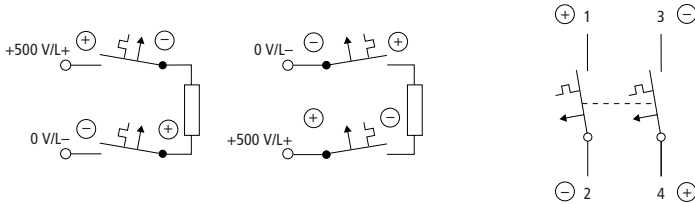
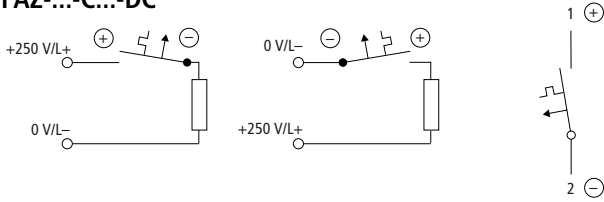
只允许专业人员和受过专业训练的人员进行下列工作。



Z 2

	FAZ-...	AZ-...	FAZ-PN-...
	1 × (1 – 25) mm <sup>2</sup>	1 × (2.5 – 50) mm <sup>2</sup>	1 × (1 – 16) mm <sup>2</sup>
	2 × (1 – 10) mm <sup>2</sup>	2 × (2.5 – 25) mm <sup>2</sup>	2 × (1 – 6) mm <sup>2</sup>
	1 × (0.75 – 16) mm <sup>2</sup>	–	1 × (0.75 – 10) mm <sup>2</sup>
DIN 46228	2 × (4 – 6) mm <sup>2</sup>	2 × (2.5 – 16) mm <sup>2</sup>	2 × (1 – 4) mm <sup>2</sup>
	2.4 Nm	3.0 Nm	1.5 Nm

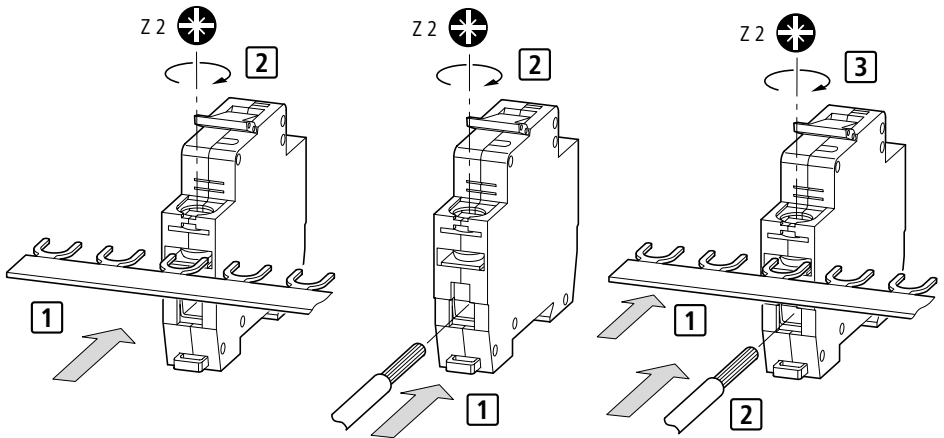
## FAZ-...-C...-DC



## FAZ-XIS..., FAZ-(PN-...), FAZ-...-NA



07/01 AWA1220-1755



### Supplementary Protector Technical Data

FAZB  
FAZC; (FAZ-...-C...-DC)  
FAZR  
FAZS

1 phase:  
5 kA – 277 V ~ 60 Hz  
3 phase:  
5 kA – 277/480 V ~ 60 Hz

USA/Canada  
UL 1077  
CSA 22.2 No. 235 – M89

6 A to 40 A  
0.5 A to 40 A  
6 A to 40 A  
1 A to 16 A

Tripping Current:  
155 % of rated current  
at 30 °C  
Cu 75 °C, min. AWG 18,  
max. AWG 8; Nm 2.4

### Circuit Breaker UL 489 FAZ-...-NA

Spacings for multiple pole installations where breakers are mounted adjacent to each other and are connected to different polarity circuits must be maintained as following:

Through Air	19.1 mm
Over Surface	31.8 mm

In conjunction with an upstream device fuse up to  $4 \times I_n$