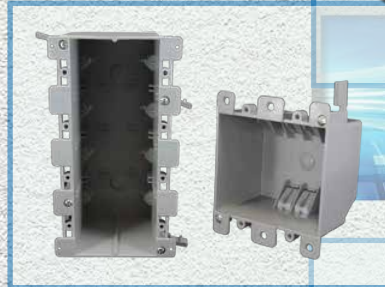


CANTEX[®]

EZ BOX[®] Line

**PVC Electrical
Switch, Outlet
& Ceiling Boxes**



New Work Boxes

Old Work Boxes

Single Gang

Two, Three, & Four Gang

Vapor Boxes

Adjustable Boxes

Heavy Wall Boxes

Ceiling & Ceiling Fan Boxes

Handy Wall Boxes

EZ BOX Low Voltage

Red Alarm Boxes

EZ BOX Accessories

ENT Boxes

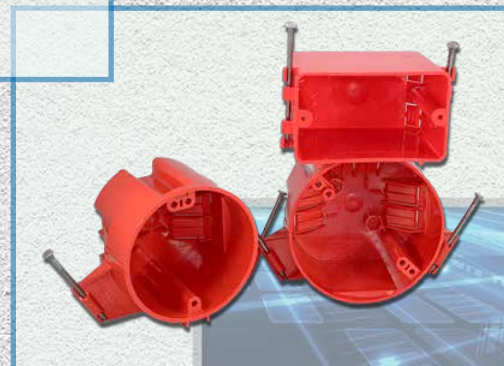
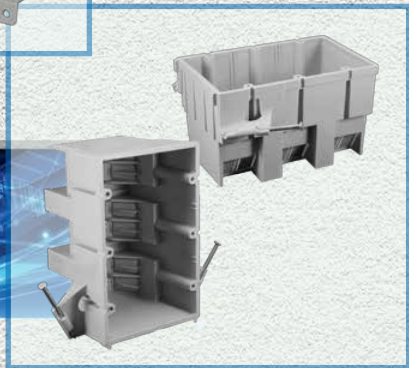
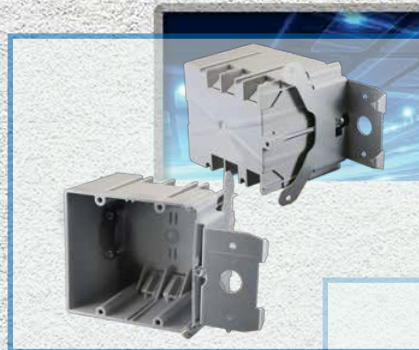


Table of Contents

EZ BOX® New Work Switch, Outlet, Ceiling & Ceiling Fan Boxes

New Work Box Overview.....	5
Single Gang New Work Switch & Outlet.....	6
Two, Three & Four Gang New Work /Switch & Outlet.....	7
New Work Flanged for Steel Stud Boxes.....	8
New Work 4" Square & Shallow Boxes.....	10
New Work Ceiling & Ceiling Fan Boxes.....	11



EZ BOX® Old Work Switch, Outlet & Ceiling Boxes

Old Work Box Overview.....	14
Single Gang Old Work Switch & Outlet Boxes.....	15
Two, Three & Four Gang Old Work Switch & Outlet Boxes.....	15
Shallow and Low Voltage Old Work.....	16
Old Work Ceiling Boxes.....	17



EZ BOX® Heavy Wall Switch, Outlet & Ceiling Boxes

Heavy Wall Box Overview.....	18
Single, Two & Three Gang Heavy Wall Switch & Outlet Boxes.....	18
Four Gang Heavy Wall Switch & Outlet Boxes.....	19
Heavy Wall Ceiling Boxes.....	19



EZ BOX® Adjustable Switch and Outlet Boxes

Adjustable Switch and Outlet Box Overview.....	21
Single & Two Gang Adjustable Switch and Outlet Box Overview.....	21



EZ BOX® Vapor Boxes

Vapor Box Overview.....	22
Single, Two & Three Gang Vapor Boxes.....	22
Ceiling Vapor Boxes.....	22



EZ BOX® Low Voltage

EZ BOX Low Voltage Overview.....	23
Single & Two Gang Low Voltage Brackets.....	23
Single Gang Low Voltage Add-on Bracket.....	23
Low Voltage Nail-on Single and Two Gang Brackets	24
EZ BOX New Work Dual Voltage Bracket.....	24
EZ BOX Low Voltage Divider.....	24



EZ BOX® Red Alarm Boxes

Red Alarm Box Overview.....	25
Single Gang Red Alarm Switch & Outlet Boxes.....	25
Red Alarm Ceiling Boxes.....	25



Table of Contents

EZ BOX® ENT Boxes

EZ BOX ENT Boxes Overview.....	26
Single Gang and 4" Square ENT Boxes.....	26
Two Gang ENT Boxes.....	27
ENT Ceiling Boxes.....	27



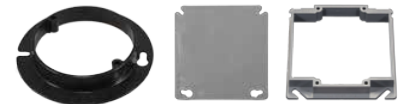
EZ BOX® Handy Wall Box and Covers

EZ BOX Handy Box.....	28
EZ BOX Handy Covers.....	28



EZ BOX® Accessories

EZ BOX Non-Metallic Round Plastic Ring (Mud Ring).....	29
Single & Two Gang Cover Risers.....	29
EZ BOX Round and Square Covers.....	30



EZ BOX® Cross Reference

EZ BOX Part Number Cross Reference Guide.....	31
---	----

Introduction to the EZ BOX® Line

Why CANTEX EZ BOXES?

The CANTEX EZ BOX® line offers a complete selection of non-metallic electrical switch, outlet and ceiling boxes in multiple sizes and styles to meet all your new construction and renovation project needs. Whether you need EZ nail-on, single-gang boxes with enhanced angled nails for installation between studs or adjustable EZ BOXES with adjustable brackets for the perfect fit on tile backsplashes, CANTEX has a solution. The EZ BOX line has easy to install, long-wearing, maintenance-free non-metallic electrical boxes for all your projects. You can choose from one of our many wall boxes, which are made of durable easy to install PVC or one of our many ceiling and ceiling fan boxes that are made of polycarbonate for even more strength. CANTEX offers almost 100 styles of EZ BOXES in multiple sizes and gang applications to meet all your new and old work project needs.

CANTEX EZ BOXES are all ETL or UL listed for use as in the Article 314 of the National Electrical code. They are also 2-hour fire-rated when applicable. Plus, the CANTEX EZ Box line is backed by over 60 years of experience manufacturing unrivaled American-made electrical products. The EZ BOX line is also supported by our long history of providing quality products, great service and fast, dependable delivery.



For over 60 years, our engineers have stayed ahead of the industry by continually seeking ways to improve product designs for better functionality and to insure that our products meet or exceed industry standards. At CANTEX, we know that better functionality translates into important time and labor cost savings for the end user. Special features on our EZ BOXES like angled nails and well-engineered wiring clamps and knockouts are carefully designed for EZ installation. Browse this EZ BOX catalog or visit www.cantexinc.com to learn more about how CANTEX EZ Boxes can make fast and EZ work of residential and light commercial electrical installations.

EZ BOX® Product Identifiers

Part Number Legend

EZ BOX PRODUCT #: **EZ 20 CNG**

Identifies the
CANTEX
EZ BOX line.

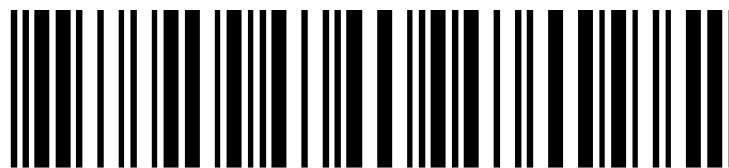
04 = 4 Cubic Inches
08 = 8 Cubic Inches
10 = 10 Cubic Inches
12 = 12 Cubic Inches
14 = 14 Cubic Inches
16 = 16 Cubic Inches
18 = 18 Cubic Inches
20 = 20 Cubic Inches
21 = 21 Cubic Inches
22 = 22 Cubic Inches
23 = 23 Cubic Inches
26 = 26 Cubic Inches
32 = 32 Cubic Inches
34 = 34 Cubic Inches
36 = 36 Cubic Inches
44 = 44 Cubic Inches
48 = 48 Cubic Inches
53 = 53 Cubic Inches
54 = 54 Cubic Inches
55 = 55 Cubic Inches
64 = 64 Cubic Inches
68 = 68 Cubic Inches
74 = 74 Cubic Inches

A = Alarm
B = Bracketed
C = Ceiling Box
D = Double (2) Gang
E = Extended Cover
F = Flanged
G = Ground Lug
H = Hanger
K = Blank
L = Lid (Cover)
M = Metal
N = Nail On
O = Old Work
P = Project Pack
Q = Quad (4) Gang
R = Retail Pack
S = Single (1) Gang
T = Triple (3) Gang
U = Express Clip
X = 4" Square
Y = 4" Round
Z = Screw Nail

Uniform Product Codes - Bar Codes

UPC - ITF

Shipping container bar code to identify each standard carton of products using interleaved 2 of 5 symbology.



3 00 88700 97061 9

PACKAGING
LEVEL

NUMBER SYSTEM
CHARACTERS

MANUFACTURER
I.D. NUMBER

ITEM NUMBER

CHECK DIGIT

EZ BOX® New Work Switch & Outlet Boxes

CANTEX NEW WORK EZ BOXES

Our new work (new construction) switch, outlet and ceiling boxes are perfect for residential and light commercial use. They are carefully engineered to make new work installations EZ and cost effective. Our huge selection of non-metallic electrical new work EZ BOXES offers the versatility needed to meet all new work project specifications with maintenance free, EZ to install electrical, switch, outlet, ceiling and ceiling fan boxes.



THE BENEFITS OF CANTEX NEW WORK EZ BOXES:

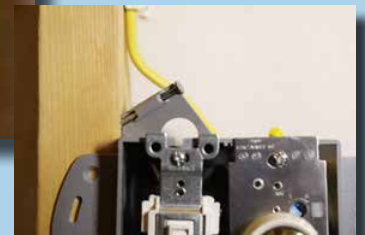
EZ Wiring Options

Choice of preferred EZ wiring options like traditional clamps, v-clamps, or knockouts.



EZ Installation Options

EZ to install with enhanced angled nails for easy mounting between studs. Just line up and hammer in the nails.



Cost-Saving Solutions

Cost-saving options like our Express Clip® cut down on labor time and cost. Just align a switch or outlet device with the mounting hole, push the device's screw into the Express Clip® and one half turn of the screw completes an EZ and secure installation.



The screw nail option features a sharp point, slotted head, threaded body screw-nail for easy installation using a power screwdriver without having to pre-drill.

Installation Options

Great installation options like molded and metal brackets for specific application needs like steel studs or unusual space between studs.



EZ BOX® New Work Switch & Outlet Boxes

Technical drawings for each product can be found on the product pages at www.cantexinc.com.

EZ BOX® Single Gang New Work Switch & Outlet Boxes



2 hour fire-rated

EZ BOX New Work, 18 cu. in., Nail-on, Switch and Outlet Box with Wire Clamps

EZ18SN, EZ20SN & EZ23SN are 1-gang, 18 cu. in., new work switch and outlet boxes with enhanced angled nails that make mounting between studs EZ and more secure. This new construction box features four v-clamps making wiring easier during residential and light commercial installations.

20.3 Cubic Inch

Part Number	Carton Quantity	Height	Width	Depth
EZ20SN	100	3.700	2.250	3.125

Dimensions are nominal

18 Cubic Inch

Part Number	Carton Quantity	Height	Width	Depth
EZ18SN	100	3.700	2.250	2.875

Dimensions are nominal

23 Cubic Inch

Part Number	Carton Quantity	Height	Width	Depth
EZ23SN	100	3.700	2.25	3.500

Dimensions are nominal



2 hour fire-rated

EZ BOX New Work, Nail-on, Switch and Outlet Box with Knockouts

EZ18SNW, EZ20SNW & EZ23SNW are 1-gang, 18 cu. in., electrical switch and outlet boxes for residential or light commercial electrical installations with 4 knockouts for EZ wiring and enhanced angled nails for EZ more secure mounting between studs.

20.3 Cubic Inch

Part Number	Carton Quantity	Height	Width	Depth
EZ20SNW	100	3.700	2.250	3.125

Dimensions are nominal

18 Cubic Inch

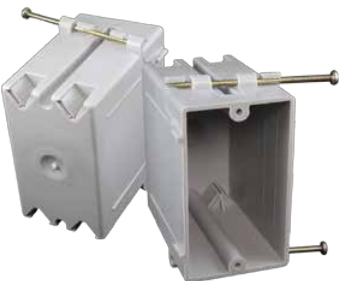
Part Number	Carton Quantity	Height	Width	Depth
EZ18SNW	100	3.700	2.250	2.875

Dimensions are nominal

23 Cubic Inch

Part Number	Carton Quantity	Height	Width	Depth
EZ23SNW	100	3.700	2.250	3.500

Dimensions are nominal



2 hour fire-rated

EZ BOX New Work Switch and Outlet Box with Screw Nails

EZ18SNZ, EZ20SNZ & EZ23SNZ are 1-gang electrical switch and outlet boxes for residential or light commercial electrical installations. They feature v-clamps for EZ wiring and screw-nails for use on aluminum, light to medium grade steel or wood studs. The sharp point, slotted head and threaded body allow for EZ installation with a power screwdriver without pre-drilling.

18 Cubic Inch

Part Number	Carton Quantity	Height	Width	Depth
EZ18SNZ	100	3.700	2.250	2.875

Dimensions are nominal

20.3 Cubic Inch

Part Number	Carton Quantity	Height	Width	Depth
EZ20SNZ	100	3.700	2.250	3.125

Dimensions are nominal

23 Cubic Inch

Part Number	Carton Quantity	Height	Width	Depth
EZ23SNZ	100	3.700	2.250	3.500

Dimensions are nominal



2 hour fire-rated

EZ BOX New Work, Nail-on Switch and Outlet Box with Express Clip

EZ18SNU, EZ20SNU & EZ23SNU are 1-gang electrical switch and outlet boxes for residential or light commercial electrical installations. They feature knockouts, enhanced angled nails and an Express Clip® that allows for EZ installation of electrical devices. Just align the device with the mounting holes, push screw into the Express Clip® and turn for quick secure installation.

20.3 Cubic Inch

Part Number	Carton Quantity	Height	Width	Depth
EZ20SNU	100	3.700	2.250	3.125

Dimensions are nominal

18 Cubic Inch

Part Number	Carton Quantity	Height	Width	Depth
EZ18SNU	100	3.700	2.250	2.875

Dimensions are nominal

23 Cubic Inch

Part Number	Carton Quantity	Height	Width	Depth
EZ23SNU	100	3.700	2.250	3.500

Dimensions are nominal

EZ BOX® New Work Switch & Outlet Boxes

Technical drawings for each product can be found on the product pages at www.cantexinc.com.

EZ BOX® Two Gang New Work Switch & Outlet Boxes



2 hour fire-rated

EZ BOX New Work, Nail-on, 2-Gang, 32 cu. in., Switch and Outlet Box with Wire Clamps

EZ32DN EZ BOX is a 32 cu. in., 2-gang, nail-on, electrical switch and outlet box for residential or light commercial new construction (new work) electrical installations. It features 8 wire clamps and enhanced angled nails for EZ installation.



8 integral clamps for EZ & secure wiring

32 Cubic Inch

Part Number	Carton Quantity	Height	Width	Depth
EZ32DN	50	3.688	3.938	3.063

Dimensions are nominal



2 hour fire-rated

EZ BOX New Work, 32 cu. in. Switch and Outlet Box with Screw Nails and Wire Clamps

EZ32DNZ EZ BOX is a 32 cu. in., 2-gang, electrical switch and outlet box for residential or light commercial electrical installations. It features screw-nails for use on aluminum, light to medium grade steel or wood studs. The sharp point, slotted head and threaded body allow for easy installation using a power screwdriver without having to pre-drill. It can also be installed on wood studs using a hammer.



8 integral clamps for EZ & secure wiring

32 Cubic Inch

Part Number	Carton Quantity	Height	Width	Depth
EZ32DNZ	50	3.688	3.938	3.063

Dimensions are nominal

EZ BOX® Three Gang New Work Switch & Outlet Boxes



2 hour fire-rated

EZ BOX 3-Gang, 44 cu. in., New Work, Nail-on Switch and Outlet Box with Wire Clamps

EZ44TN is a 44 cu. in., 3-gang, nail-on, electrical switch and outlet box for residential or light commercial new construction (new work) electrical installations. It features 12 wire clamps and enhanced angled nails for easy installation.



12 integral clamps for EZ & secure wiring

44 Cubic Inch

Part Number	Carton Quantity	Height	Width	Depth
EZ44TN	50	3.700	5.800	2.750

Dimensions are nominal



2 hour fire-rated

EZ BOX 3-Gang, 44 cu. in. New Work Switch & Outlet Box with Screw Nails and Wire Clamps

EZ44TNZ is a 44 cu. in., 3-gang electrical switch and outlet box for residential or light commercial electrical installations. It features screw-nails for use on aluminum, light to medium grade steel or wood studs. The sharp point, slotted head and threaded body allow for easy installation using a power screwdriver without having to pre-drill.



12 integral clamps for EZ & secure wiring

44 Cubic Inch

Part Number	Carton Quantity	Height	"B"	"C"
EZ44TNZ	50	3.700	5.800	2.750

Dimensions are nominal

EZ BOX® New Work Switch & Outlet Boxes

Technical drawings for each product can be found on the product pages at www.cantexinc.com.

EZ BOX® Four Gang New Work Switch & Outlet Boxes with Adjustable Brackets

EZ BOX 4-Gang, New Work, Nail-on, Switch & Outlet Box with Adjustable Bracket & Wire Clamps

EZ55QNB EZ BOX is a 55 cu. in., 4-gang, nail-on, electrical, switch and outlet box for residential or light commercial new construction (new work) electrical installations. It features an adjustable metal bracket for quick mounting between studs as well as 12 wire clamps and enhanced angled nails for EZ installation.



2 hour fire-rated



12 integral clamps for EZ & secure wiring

55 Cubic Inch

Part Number	Carton Quantity	Height	Width	Depth
EZ55QNB	25	3.712	7.629	2.614

Dimensions are nominal

EZ BOX 4-Gang, New Work, Switch & Outlet Box with Screw Nails, Adjustable Bracket & Wire Clamps

EZ55QNBZ is a 55 cu. in., 4-gang, electrical, switch and outlet box for residential or light commercial new construction (new work) electrical installations. It features an adjustable metal bracket for quick mounting between studs as well as screw-nails for EZ installation on aluminum or light to medium grade steel or wood studs. The screw-nail's sharp point, slotted head and threaded body allow for installation using a power screwdriver without having to pre-drill. EZ55QNBZ can also be hammered into wood studs.



2 hour fire-rated



12 integral clamps for EZ & secure wiring

55 Cubic Inch

Part Number	Carton Quantity	Height	Width	Depth
EZ55QNBZ	25	3.712	7.629	2.614

Dimensions are nominal

EZ BOX® Electrical Single Gang Switch & Outlet Boxes with Bracket for Steel or Wood Studs

EZ BOX 1-Gang, New Work, Switch & Outlet Box with Steel Stud Bracket & Wire Clamps

CANTEX EZ20SB EZ BOX is a 20 cu. in., 1-gang, nail-on, electrical, switch and outlet box for residential or light commercial new construction (new work) electrical installations with a molded bracket for steel stud mounting. It also features 4 contractor preferred v-clamps.



2 hour fire-rated



Features 4 V-clamps for EZ & secure wiring

20.3 Cubic Inch

Part Number	Carton Quantity	Height	Width	Depth
EZ20SB	100	3.688	2.250	3.188

Dimensions are nominal

EZ BOX® Electrical Two Gang Switch & Outlet Boxes with Bracket for Steel or Wood Studs

EZ BOX 2-Gang, Deep, 48 cu. in., New Work, Nail-on, Switch and Outlet Box with Steel Stud Bracket

EZ48DN is a 48 cu. in., 2-gang, nail-on, electrical, switch and outlet box for residential or light commercial new construction (new work) electrical installations that also has molded brackets for steel stud mounting. It features 8 wire v-clamps and enhanced angled nails for EZ and more secure installation.



2 hour fire-rated



- Largest 2-Gang PVC cu. in. box on the market
- Accepts larger wiring devices like dimming switches or motions sensors
- Allows for additional wire capacity
- Dividers are available to partition boxes for installation of low voltage/communication devices (EZLVD).

48 Cubic Inch

Part Number	Carton Quantity	Height	Width	Depth
EZ48DN	50	4.000	4.000	4.000

Dimensions are nominal

EZ BOX® New Work Switch & Outlet Boxes

Technical drawings for each product can be found on the product pages at www.cantexinc.com.

EZ BOX® Electrical Two Gang Switch & Outlet Boxes with Bracket for Steel or Wood Studs

EZ BOX 2-Gang, Deep, New Work, Switch & Outlet Box with Screw Nails and Bracket for Steel Studs



EZ48DNZ is a 48 cu. in., 2-gang, electrical, switch and outlet box for residential or light commercial new construction (new work) installations with molded brackets for steel stud mounting and screw-nails for use on aluminum, light to medium grade steel or wood studs. The sharp point, slotted head and threaded body of the screw-nails allow for easy installation using a power screwdriver with no need to pre-drill. It can also be installed on wood studs using a hammer. It also features 8 wire v-clamps.

- Largest 2-Gang PVC cu. in. box on the market
- Accepts larger wiring devices like dimming switches or motions sensors
- Allows for additional wire capacity
- Dividers are available to partition boxes for installation of low voltage/communication devices (EZLVD).

48 Cubic Inch

Part Number	Carton Quantity	Height	Width	Depth
EZ48DNZ	50	4.000	4.000	4.000

Dimensions are nominal



US 2 hour fire-rated

EZ BOX 2-Gang Deep New Work Nail-on Switch and Outlet Box with Steel Stud Bracket, Wire Clamps, & Express Clip



EZ48DNU is a 48 cu. in. 2-gang, nail-on switch and outlet box for residential or light commercial new construction (new work) electrical installations. It features molded brackets for steel stud mounting along with v-clamps, Express Clips® and screw-nails for EZ installation. The sharp point, slotted head and threaded body of screw-nails allow for installation using a power screwdriver without having to pre-drill on aluminum, light to medium grade steel or wood studs. Express Clip® allows for EZ secure installation of electrical devices. Just align device with mounting holes, push in and turn the screw.

- Largest 2-Gang PVC cu. in. box on the market
- Accepts larger wiring devices like dimming switches or motions sensors
- Allows for additional wire capacity
- Dividers are available to partition boxes for installation of low voltage/communication devices (EZLVD).

48 Cubic Inch

Part Number	Carton Quantity	Height	Width	Depth
EZ48DNU	50	4.000	4.000	4.000

Dimensions are nominal

Express Clip®



US 2 hour fire-rated

EZ BOX® Electrical Three Gang Switch & Outlet Boxes with Bracket for Steel or Wood Studs

EZ BOX 3-Gang, Deep, New Work, Nail-on, Switch & Outlet Box with Steel Stud Bracket



EZ74TN is a 74 cu. in., 3-gang, nail-on, electrical, switch and outlet box for residential or light commercial new construction (new work) installations with molded brackets for steel stud mounting. It also features 12 contractor preferred wire v-clamps and enhanced angled nails for easy installation.

- Largest 3-Gang PVC cu. in. box on the market
- Accepts larger wiring devices like dimming switches or motions sensors
- Allows for additional wire capacity
- Dividers are available to partition boxes for installation of low voltage/communication devices (EZLVD).

74 Cubic Inch

Part Number	Carton Quantity	Height	Width	Depth
EZ74TN	50	4.000	6.000	4.000

Dimensions are nominal



US 2 hour fire-rated

EZ BOX 3-Gang, Deep, New Work, Switch and Outlet Box with Screw Nails and Steel Stud Brackets



EZ74TNZ is a 74 cu. in., 3-gang, electrical, switch and outlet box for residential or light commercial new construction (new work) electrical installations with molded brackets for steel stud mounting and screw-nails for EZ installation on aluminum, light to medium grade steel or wood studs. The screw-nail's sharp point, slotted head and threaded body allow for installation using a power screwdriver with no need to pre-drill. It also features 12 v-clamps and enhanced angled nails for easy installation.

- Largest 3-Gang PVC cu. in. box on the market
- Accepts larger wiring devices like dimming switches or motions sensors
- Allows for additional wire capacity
- Dividers are available to partition boxes for installation of low voltage communication devices (EZLVD).

74 Cubic Inch

Part Number	Carton Quantity	Height	Width	Depth
EZ74TNZ	50	4.000	6.000	3.000

Dimensions are nominal



US 2 hour fire-rated

EZ BOX® New Work Switch & Outlet Boxes

EZ BOX Deep, 3-Gang, New Work, Switch & Outlet Box w/ Screw Nails, Steel Stud Brackets & Express Clip



EZ74TNZU EZ BOX is a 74 cu. in., 3-gang, switch and outlet box for residential or light commercial new construction (new work) electrical installations. It features molded brackets for steel stud mounting along with v-clamps, Express Clips® and screw-nails for EZ installation. The sharp point, slotted head and threaded body of screw-nails allow for installation using a power screwdriver without having to pre-drill on aluminum, light to medium grade steel or wood studs. Express Clip® allows for EZ secure installation of electrical devices. Just align device with mounting holes, tap and turn the screw.



Express Clip®



2 hour fire-rated

- Largest 3-Gang PVC cu. in. box on the market
- Accepts larger wiring devices like dimming switches or motions sensors
- Allows for additional wire capacity
- Dividers are available to partition boxes for installation of low voltage communication devices (EZLVD).

74 Cubic Inch

Part Number	Carton Quantity	Height	Width	Depth
EZ74TNZU	50	4.000	6.000	3.000

Dimensions are nominal

EZ BOX® Low Voltage Divider for Use with Multi-Gang Deep Boxes

EZ BOX Low Voltage Divider for Use with Multi-Gang Deep Boxes



EZLVD Low Voltage Divider allows the installation of a communication devices in a closed back multi-gang deep box along with a standard switch or outlet devices. EZLVD is used with the following CANTEX 2 or 3-gang EZ BOXES: EZ48DN, EZ48DNZ, EZ48DNU, EZ74TN, EZ74TNZ, and EZ74TNU.



Low Voltage Divider

Part Number	Carton Quantity	Height	Width	Depth
EZLVD	50	3.834	3.870	.080

Dimensions are nominal



EZ BOX® Four Inch Square Non-Metallic Electrical Boxes

EZ BOX 4 Inch, Square, 18 Cu. In., New Work, Nail-on Electrical Box with Wire Clamps



EZ18XN is an 18 cu. in., 4" square, PVC box for residential or light commercial new construction (new work) electrical installations with a molded flange and enhanced angled nails for EZ mounting options. 4" square boxes provide maximum volume for multiple conductors and connectors that often run in two or more directions. Great for walls or ceilings for fixtures, switches or receptacles. CANTEX 4" square boxes are often used with solid PVC blank covers likes CANTEX EZXKL. It features 8 integral wire clamps to hold wires securely.



8 integral clamps for EZ & secure wiring

18 Cubic Inch

Part Number	Carton Quantity	Height	Width	Depth
EZ18XN	75	4.000	4.000	1.625

Dimensions are nominal



2 hour fire-rated

EZ BOX 4 Inch, Square, 32 Cu. In., New Work, Nail-on, Electrical Box with Wire Clamps



EZ32XN is a 32 cu. in., 4" square, PVC box for residential or light commercial new construction (new work) electrical installations with a molded flange and enhanced angled nails for EZ mounting. 4" square boxes provide maximum volume for multiple conductors and connectors that often run in two or more directions. Great for walls or ceilings for fixtures, switches or receptacles. CANTEX 4" square boxes are often used with solid PVC blank covers likes CANTEX EZXKL. 10 integral wire clamps to hold wires securely.



10 integral clamps for EZ & secure wiring

32 Cubic Inch

Part Number	Carton Quantity	Height	Width	Depth
EZ32XN	50	4.000	4.000	2.625

Dimensions are nominal



2 hour fire-rated

EZ BOX® New Work Switch & Outlet Boxes

Technical drawings for each product can be found on the product pages at www.cantexinc.com.

EZ BOX® Shallow Bracketed New Work Nail-on Switch & Outlet Box

EZ BOX 1-Gang, 8 cu. in, Shallow, New Work, Nail-on, Switch and Outlet Box with Bracket



2 hour fire-rated

CANTEX EZ08SB is a 1-gang, 8 cubic inch, PVC switch or outlet box that is great for residential and light commercial new construction (new work) applications where a shallow electrical box is needed. It features a molded-on PVC bracket for easy mounting on wood or metal studs. It mounts easily to studs with a convenient side bracket. Engineered for easy, cost saving installation and constructed with resilient PVC for durability.

The shallow depth of 1-1/4 inches is great for tight spaces.

8 Cubic Inch

Part Number	Carton Quantity	Height	Width	Depth
EZ08SB	25	3.563	2.250	1.250

Dimensions are nominal

EZ BOX® Nail-on New Work Ceiling Boxes

EZ BOX 18 cu. in., New Work, Nail-on, Ceiling Box with Wire Clamps



2 hour fire-rated

The EZ18CN EZ BOX is an 18 cu. in., new work (new construction) residential ceiling box for residential and light commercial ceiling applications. It features six wire clamps and enhanced angled nails for easy installation. Attached mounting nails are included. CANTEX ceiling boxes are designed for easy, cost saving installation and constructed with durable polycarbonate for added resilience.

- Supports fixtures up to 50 lbs.
- Not suitable for ceiling fans.

18 Cubic Inch

Part Number	Carton Quantity	Height	Width	Depth
EZ18CN	75	3.500	3.500	2.680

Dimensions are nominal

EZ BOX 18 cu. in., New Work, Nail-on, Ceiling Box with Wire Clamps and Ground Lug



2 hour fire-rated

CANTEX EZ18CNG EZ BOX is an 18 cu. in., new work (new construction) residential ceiling box for residential and light commercial ceiling applications. It features six wire clamps and enhanced angled nails for easy installation and a ground lug for grounding. Attached mounting nails are included. CANTEX ceiling boxes are designed for easy, cost saving installation and constructed with durable polycarbonate for added resilience.

- Supports fixtures up to 50 lbs.
- Not suitable for ceiling fans.

18 Cubic Inch

Part Number	Carton Quantity	Height	Width	Depth
EZ18CNG	75	3.500	3.500	2.680

Dimensions are nominal

EZ BOX 20 cu. in., New Work, Nail-on Ceiling Box with Wire Clamps



2 hour fire-rated

CANTEX EZ20CN EZ BOX is a 20 cu. in., new work (new construction) residential ceiling box for residential and light commercial ceiling applications. It features six wire clamps and enhanced angled nails for easy installation. Attached mounting nails are included. CANTEX ceiling boxes are designed for easy, cost saving installation and constructed with durable polycarbonate for added resilience.

- Supports fixtures up to 50 lbs.
- Not suitable for ceiling fans.

20 Cubic Inch

Part Number	Carton Quantity	Height	Width	Depth
EZ20CN	75	4.000	4.000	2.300

Dimensions are nominal

EZ BOX® New Work Ceiling & Ceiling Fan Boxes

Technical drawings for each product can be found on the product pages at www.cantexinc.com.

EZ BOX® New Work Ceiling Boxes

EZ BOX New Work, 20 cu. in., Nail-on, Ceiling Box with Wire Clamps and Ground Lug



EZ20CNG EZ BOX is a 20 cu. in., new work (new construction) residential ceiling box for residential and light commercial ceiling applications. It features six wire clamps and enhanced angled nails for easy installation and a ground lug for grounding. Attached mounting nails are included. CANTEX ceiling boxes are designed for easy, cost saving installation and constructed with durable polycarbonate for added resilience.



2 hour fire-rated

- Supports fixtures up to 50 lbs.
- Not suitable for ceiling fans.

20 Cubic Inch

Part Number	Carton Quantity	Height	Width	Depth
EZ20CNG	75	4.000	4.000	2.300

Dimensions are nominal

EZ BOX New Work, 20 cu. in. Ceiling Box with Hanger Bar and Wire Clamp



EZ20CH EZ BOX is a 20 cu. in., new work (new construction) ceiling box with an attached bar hanger for adjustable, support between ceiling joists. EZ20CH is for residential and light commercial ceiling applications. EZ20CH features 6 wire clamps and an adjustable bar hanger that adjusts from 14" to 18" for added support and installation options. CANTEX ceiling boxes are designed for easy, cost saving installation and constructed with durable polycarbonate for added resilience.



2 hour fire-rated

- Supports fixtures up to 50 lbs.
- Not suitable for ceiling fans.

20 Cubic Inch

Part Number	Carton Quantity	Height	Width	Depth
EZ20CH	75	4.000	4.000	2.300

Dimensions are nominal

EZ BOX New Work, 20 cu. in. Ceiling Box with Hanger Bar, Wire Clamps and Ground Lug



EZ20CHG EZ BOX is a 20 cu. in., new work (new construction) ceiling box with an attached bar hanger for adjustable, support between ceiling joists as well as a ground lug for grounding. EZ20CHG is for residential and light commercial ceiling applications. EZ20CHG features wire clamps and an adjustable bar hanger that adjusts from 14" to 18" for added support and installation options. CANTEX ceiling boxes are designed for easy, cost saving installation and constructed with durable polycarbonate for added resilience.



2 hour fire-rated

- Supports fixtures up to 50 lbs.
- Not suitable for ceiling fans.

20 Cubic Inch

Part Number	Carton Quantity	Height	Width	Depth
EZ20CHG	75	4.000	4.000	2.300

Dimensions are nominal

EZ BOX® New Work Ceiling & Ceiling Fan Boxes

Technical drawings for each product can be found on the product pages at www.cantexinc.com.

EZ BOX® New Work Ceiling Fan Boxes



EZ BOX New Work, 12 cu. in. Ceiling Fan Box with Screws and Wire Clamps

EZ12CF is a 12 cu. in. shallow, new construction (new work) ceiling fan box for residential and light commercial new construction (new work) applications where a shallow ceiling fan box is needed. EZ12CF accommodates 3-1/2" and 2-9/16" mounting. CANTEX ceiling fan boxes are designed for easy, cost saving installation and they are constructed with durable polycarbonate for added resilience. The mounting screws are included.

12 Cubic Inch

Part Number	Carton Quantity	Height	Width	Depth
EZ12CF	24	3.875	4.000	2.625

Dimensions are nominal

- Supports fans up to 70 lbs.
- Fixture support up to 200 lbs.



2 hour fire-rated

EZ BOX Shallow, 8 cu. in., New Work Ceiling Fan Box with Screws & Wire Clamps



EZ08CZ is a 8 cu. in. shallow, new construction (new work) ceiling fan box for residential and light commercial new construction (new work) applications where a shallow ceiling fan box is needed. EZ08CZ is great for new work ceiling fan applications in tight shallow spaces. CANTEX ceiling fan boxes are designed for easy, cost saving installation and they are constructed with durable polycarbonate for added resilience.

8 Cubic Inch

Part Number	Carton Quantity	Height	Width	Depth
EZ08CZ	25	4.250	4.250	1.000

Dimensions are nominal

- Supports fans up to 35 lbs.
- Fixture support up to 50 lbs.



2 hour fire-rated

EZ BOX Deep, 20 cu. in., New Work Ceiling Fan Box with Screws and Wire Clamps



EZ20CZ deep ceiling fan box for (new work) new construction applications is a 20 cu. in. ceiling fan box. EZ20CZ is good for residential and light commercial applications. It features 6 wiring clamps for easy wire installation. CANTEX ceiling fan boxes are designed for easy, cost saving installation and they are constructed with durable polycarbonate for added resilience.

20 Cubic Inch Ceiling Fan Box

Part Number	Carton Quantity	Width	Height	Depth
EZ20CZ	18	4.000	4.000	2.300

Dimensions are nominal

- Supports fans up to 35 lbs.
- Fixture support up to 50 lbs.



2 hour fire-rated

EZ BOX® Old Work Switch, Outlet and Ceiling Boxes

CANTEX OLD WORK EZ BOXES

Our old work (renovation) application switch, outlet and ceiling boxes are perfect for residential and light commercial use. Our large selection of PVC electrical old work EZ Boxes offers several options for meeting all old work project specifications.

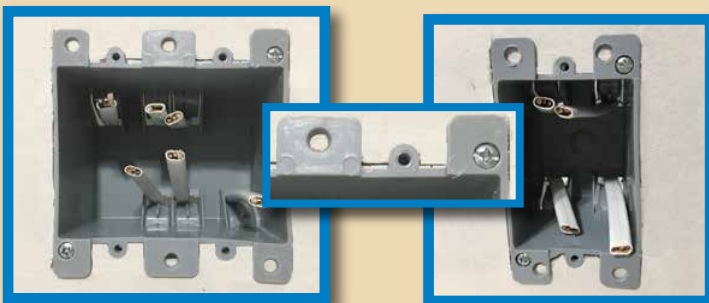
Our old work electrical switch and outlet boxes are made of non-conductive, durable, easy-to-install PVC while our old work ceiling boxes are crafted of durable polycarbonate for extra strength. This old work box line is designed for simple installation for old work projects and can also be used on masonry walls when the wall is enclosed. Since our old work PVC EZ BOXES come with their own mounting systems, there is no need to fasten them to studs, which makes electrical work for remodeling projects as EZ as possible. Besides, non-metallic boxes provide an easy-to-install and to change out option, so they are a great electrical installation choice for keeping up with the ever-changing electrical needs that come with technological advancements.



THE BENEFITS OF CANTEX OLD WORK EZ BOXES:

EZ Installation

The molded EZ mount flanges make it EZ to attach our old work boxes to any walls for any old work (renovation) projects. Just insert the box in a freshly cut hole or an existing hole and attach it to the wall.



At Work Behind the Walls

CANTEX EZ BOX old work boxes work behind the scenes to ensure they are locked into place. Winged swing tabs help lock CANTEX EZ BOX old work boxes in place. Just twist and tighten the wing tabs for an added measure of security.



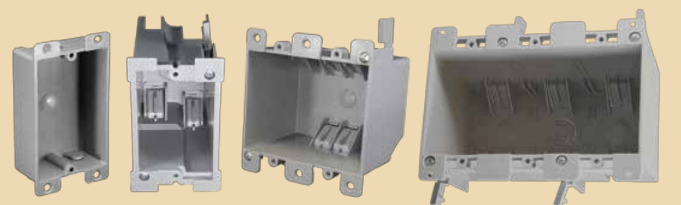
Secure Wire Clamp Options

CANTEX old work EZ BOXES offer a variety of secure wiring clamp options to meet all of your wiring needs.



The Capacity You Need

CANTEX EZ BOXES offer a variety of capacity options to provide room for all of your old work electrical wiring and installation needs.



EZ BOX[®] Old Work Switch, Outlet and Ceiling Boxes

Technical drawings for each product can be found on the product pages at www.cantexinc.com.

EZ BOX[®] Single Gang Old Work Switch & Outlet Boxes

EZ BOX 1-Gang, 14 cu. in., Old Work, Switch and Outlet Box with EZ Mount Clamps & Wire Clamps



EZ14SO EZ BOX is a 1-Gang, 14 cu. in., renovation application (old work), electrical switch or outlet box for residential or light commercial renovation projects when a 1-gang box is needed. EZ mount flanges, winged swing tabs and 4 built-in integral wire clamps make installation easy and cost effective.



2 hour fire-rated



4 integral clamps for EZ & secure wiring

14 Cubic Inch

Part Number	Carton Quantity	Height	Width	Depth
EZ14SO	50	3.125	2.250	2.750

Dimensions are nominal

EZ BOX 21 cu. in., 1-Gang, Old Work, Switch and Outlet Box with EZ Mount Flanges & V-Clamps



EZ21SO EZ BOX is a 1-Gang, 21 cu. in., renovation application (old work) electrical switch or outlet box for residential or light commercial renovation (old work) projects when a 1-gang box is needed. EZ mount flanges, winged swing tabs and 4 built-in, contractor preferred v-clamps make installation easy and cost effective.



4 v-clamps for EZ & secure wiring

21 Cubic Inch

Part Number	Carton Quantity	Height	Width	Depth
EZ21SO	50	3.850	2.400	3.600

Dimensions are nominal

EZ Box 1-Gang, 18 cu. in., Old Work, Heavy Wall Switch & Outlet Box with EZ Mount Flanges & Wire Clamps



EZ18SO-HW is a 18 cu. in., 1-gang old work, heavy wall electrical switch and outlet EZ BOX for renovation projects (old work). This heavy duty box with EZ mount flanges and winged mounting tabs is perfect for residential and light commercial applications where a more durable shell is desired. The harder shell resists flexing in various conditions. Wing tabs allow for easy, secure stud alignment & mounting.



4 integral clamps for EZ & secure wiring

18 Cubic Inch

Part Number	Carton Quantity	Height	Width	Depth
EZ18SO-HW	36	3.2850	2.400	3.600

Dimensions are nominal

EZ BOX[®] Two Gang Old Work Switch & Outlet Boxes

EZ BOX 2-Gang, 25 cu. in., Old Work Switch and Outlet Box with EZ Mount Flanges and Wire Clamps



EZ25DO EZ BOX is a 2-Gang, 25 cu. in., renovation application (old work) electrical switch or outlet box for residential or light commercial renovation projects when a 2-gang box is needed. EZ mount flanges, winged swing tabs and built in wire clamps make installation easy and cost effective.



2 hour fire-rated



6 integral clamps for EZ & secure wiring

25 Cubic Inch

Part Number	Carton Quantity	Height	Width	Depth
EZ25DO	30	3.125	4.000	2.875

Dimensions are nominal

EZ BOX® Old Work Switch, Outlet and Ceiling Boxes

Technical drawings for each product can be found on the product pages at www.cantexinc.com.

EZ BOX® Two Gang Old Work Switch & Outlet Boxes

EZ BOX Old Work, Heavy Wall, 2-Gang, 34 cu. in. Switch & Outlet Box with EZ Mount Flanges and Wire Clamps



EZ34DO-HW is the CANTEX 2-gang, 34 cu. in., heavy wall, electrical switch and outlet EZ BOX for renovation projects (old work). This heavy duty box with winged mounting tabs is perfect for residential and light commercial applications where a more durable, harder shell is desired to resist flexing.



8 integral clamps for EZ & secure wiring

34 Cubic Inch

Part Number	Carton Quantity	Height	Width	Depth
EZ34DO-HW	18	3.850	4.200	3.500

Dimensions are nominal

EZ BOX® Multi-Gang Old Work Switch & Outlet Boxes

EZ BOX, 3-Gang, Old Work, 55 cu. in. Switch and Outlet Box with EZ Mount Flanges and Wire Clamps



EZ55TO EZ BOX is a 3-Gang, 55 cu. in., renovation application (old work) electrical switch or outlet box for residential or light commercial renovation projects when a 3-gang box is needed. EZ mount flanges, winged swing tabs and built in wire clamps make installation easy and cost effective.



6 integral clamps for EZ & secure wiring

55 Cubic Inch

Part Number	Carton Quantity	Height	Width	Depth
EZ55TO	6	3.720	6.000	3.630

Dimensions are nominal

EZ BOX 4-Gang, 68 cu. in., Old Work Switch & Outlet Box with EZ Mount Flanges and V-Clamps



EZ68QO EZ BOX is a 4-Gang, 68 cu. in., renovation application (old work) electrical switch or outlet box for residential or light commercial renovation projects when a 4-gang box is needed. EZ mount flanges, winged swing tabs and built in wire clamps make installation easy and cost effective.



8 V-clamps for EZ & secure wiring

68 Cubic Inch

Part Number	Carton Quantity	Height	Width	Depth
EZ68QO	6	3.750	7.750	3.560

Dimensions are nominal

EZ BOX® Shallow Old Work Switch & Outlet Box

EZ BOX Shallow, 1-Gang, 8 cu. in., Old Work Switch and Outlet Box with EZ Mount Flanges



CANTEX EZ08SF is a 1-gang, 8 cubic inch, PVC switch or outlet box that is great for residential and light commercial remodeling (old work) applications where a shallow electrical box is needed. It features mold-on PVC flanges for easy mounting on a closed wall.

2 hour fire-rated

8 Cubic Inch

Part Number	Carton Quantity	Height	Width	Depth
EZ08SF	25	3.550	2.375	1.250

Dimensions are nominal

EZ BOX® Old Work Switch, Outlet and Ceiling Boxes

Technical drawings for each product can be found on the product pages at www.cantexinc.com.

EZ BOX® Old Work Low Voltage Switch & Outlet Boxes

EZ BOX 1-Gang, 10 cu. in., Low Voltage, Old Work Switch and Outlet Box with EZ Mounting Flanges



EZ10SOLV is a 1-gang, old work, low voltage EZ BOX used for low voltage installations in renovation (old work) residential and light commercial applications. The backless design is great for the large or deep low-voltage wiring needed for communications and cable installations.

10 Cubic Inch

Part Number	Carton Quantity	Height	Width	Depth
EZ10SOLV	25	3.000	2.250	1.580

Dimensions are nominal

EZ BOX® Old Work Switch & Outlet Box Extender

EZ BOX 1-Gang, Old Work Box Extender



EZSO-EXT EZ BOX PVC Old Work, 1-gang Box Extender is great for remodeling (old work) projects where boxes are set too deep in the wall and need extending. It can extend switch & outlet boxes up to 1-1/8 inches. It can be used with most standard 1-gang nonmetallic electrical switch and outlet boxes.

Part Number	Carton Quantity	Height	Width	Depth
EZSO-EXT	25	3.280	2.190	1.260

Dimensions are nominal



EZ BOX® Shallow Old Work Ceiling Boxes

EZ BOX Old Work, 18 cu. in., Ceiling Box with EZ Mount Tabs and Wire Clamps



EZ18CO EZ BOX is an 18 cu. in., ceiling box for (old work) electrical ceiling applications for residential or light commercial renovation (old work) projects. The EZ mount flanges, wing tabs and built in wire clamps make installation easy and cost effective. CANTEX ceiling boxes are constructed with durable polycarbonate for added resilience.

- Supports fixtures up to 6 lbs.
- Not suitable for ceiling fans.

18 Cubic Inch

Part Number	Carton Quantity	Height	Width	Depth
EZ18CO	100	4.380	4.380	2.680

Dimensions are nominal



2 hour fire-rated

EZ BOX Old Work, 18 cu. in., Ceiling Box with EZ Mount Tabs, Wire Clamps & Ground Lug



EZ18COG EZ BOX is an 18 cu. in., ceiling box with a ground lug for electrical ceiling applications for (old work) residential or light commercial renovation (old work) projects. The EZ mount flanges, wing tabs and built in wire clamps make installation easy and cost effective. CANTEX ceiling boxes are constructed with durable polycarbonate for added resilience.

- Supports fixtures up to 6 lbs.
- Not suitable for ceiling fans.

18 Cubic Inch

Part Number	Carton Quantity	Height	Width	Depth
EZ18COG	100	4.380	4.380	2.680

Dimensions are nominal

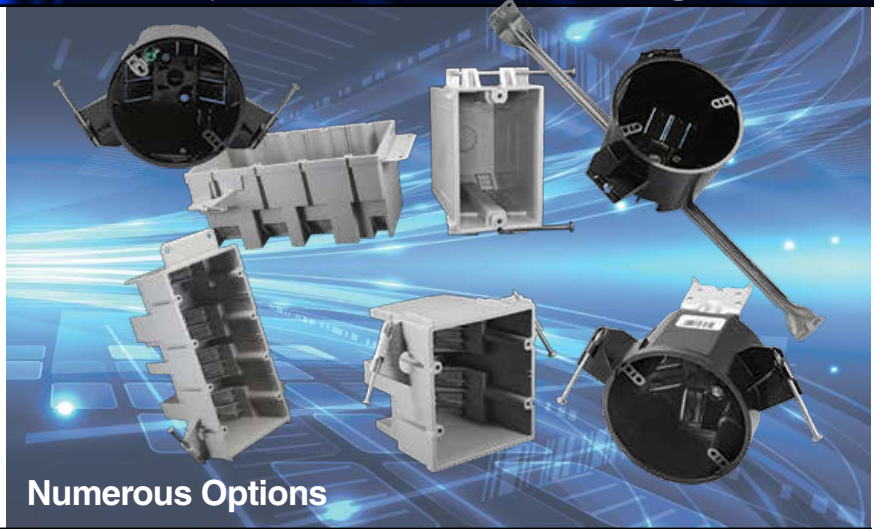


2 hour fire-rated

EZ BOX® Heavy Wall Switch, Outlet and Ceiling Boxes

HEAVY WALL EZ BOXES

Our heavy wall EZ BOX line is ideal for new work applications where an even more durable PVC electrical switch, or outlet box is a desired. CANTEX heavy wall EZ BOXES have all of the same EZ installation features, but they are designed with a harder shell to make these durable PVC boxes even more resilient to flexing, breaking or changes in shape in various conditions.



Numerous Options

EZ BOX® Heavy Wall Switch & Outlet Boxes



EZ BOX Heavy Wall, 1-Gang, 22 cu. in., New Work, Nail-on Switch and Outlet Box with Knockouts

EZ22SN-HW is a 1-gang, 22 cu. in., heavy wall EZ BOX that is ideal for new work applications for residential and light commercial projects where an even more durable box is preferred. The harder shell is designed to resist flexing and hold its shape. EZ22SN-HW also features enhanced angled nails for easy mounting between studs and knockouts for EZ wiring.



2 hour fire-rated



4 knockouts
for EZ wiring

22 Cubic Inch

Part Number	Carton Quantity	Height	Width	Depth
EZ22SN-HW	100	3.750	2.350	3.750

Dimensions are nominal



EZ BOX 2-Gang, 35 cu. in., Heavy Wall, New Work, Nail-on Switch & Outlet Box with Wire Clamps

EZ35DN-HW is a 2-gang 35 cu. in. heavy wall residential EZ BOX that is ideal for new work applications for residential and light commercial projects where an even more durable box is preferred. The harder shell is designed to resist flexing and hold its shape. It features enhanced angled nails for easy mounting between studs 6 wire clamps for EZ secure wiring.



2 hour fire-rated



6 integral
clamps for
EZ & secure
wiring

35 Cubic Inch

Part Number	Carton Quantity	Height	Width	Depth
EZ35DN-HW	48	3.850	4.170	3.590

Dimensions are nominal

EZ BOX 3-Gang, 53 cu. in., Heavy Wall, New Work, Nail-on Switch and Outlet Box with Wire Clamps



EZ53TN-HW is a 3-gang, 53 cu. in., heavy wall EZ BOX that is ideal for new work applications for residential and light commercial projects where an even more durable box is preferred. The harder shell is designed to resist flexing and to hold its shape. It features enhanced, angled nails for easy mounting between studs and 12 integral wire clamps for EZ secure wiring.



2 hour fire-rated



12 integral
clamps for
EZ & secure
wiring

53 Cubic Inch

Part Number	Carton Quantity	Height	Width	Depth
EZ53TN-HW	24	3.850	5.900	3.600

Dimensions are nominal

EZ BOX[®] Heavy Wall Switch, Outlet and Ceiling Boxes

Technical drawings for each product can be found on the product pages at www.cantexinc.com.

EZ BOX[®] Heavy Wall Switch & Outlet Boxes

EZ BOX Heavy Wall 4-Gang 64 cu. in. New Work Nail-on Switch and Outlet Box with Wire Clamps



2 hour fire-rated



EZ64QN-HW 4-gang 64 cu. in. heavy wall residential EZ BOX is ideal for new work applications for residential and light commercial projects where where an even more durable electrical box is preferred. This larger 64 cu. in. box is designed to hold most standard devices. The harder shell is designed to resist flexing and hold its shape. It also features enhanced angled nails for easy mounting between studs and stronger wire clamps for extra secure wiring.



14 integral clamps for EZ & secure wiring

64 Cubic Inch

Part Number	Carton Quantity	Height	Width	Depth
EZ64QN-HW	24	3.850	7.750	3.600

Dimensions are nominal

EZ BOX[®] Two Gang Old Work Switch & Outlet Boxes

EZ BOX Old Work, Heavy Wall, 2-Gang, 34 cu. in. Switch & Outlet Box with EZ Mount Flanges and Wire Clamps



EZ34DO-HW is the CANTEX 2-gang, 34 cu. in., heavy wall, electrical switch and outlet EZ BOX for renovation projects (old work). This heavy duty box with winged mounting tabs is perfect for residential and light commercial applications where a more durable, harder shell is desired to resist flexing.



8 integral clamps for EZ & secure wiring

34 Cubic Inch

Part Number	Carton Quantity	Height	Width	Depth
EZ34DO-HW	18	3.850	4.200	3.500

Dimensions are nominal

EZ BOX[®] Heavy Wall Ceiling Boxes

EZ BOX Heavy Wall, 25 cu. in., New Work, Nail-on Ceiling Box with Wire Clamps



2 hour fire-rated

EZ25CN-HW is a 25 cu. in., nail-on, heavy wall ceiling box for new work (construction) applications residential and light commercial projects. It is a heavy duty new construction (new work) ceiling box to use where a more durable electrical box is preferred. The harder shell is designed to resist flexing and hold its shape. It features enhanced angled nails for easy mounting between studs and 5 heavy-duty clamps for EZ secure wiring. CANTEX ceiling boxes are constructed with durable polycarbonate for added resilience.

- Supports fixtures up to 50 lbs.
- Not suitable for ceiling fans.

25 Cubic Inch

Part Number	Carton Quantity	Height	Width	Depth
EZ25CN-HW	24	4.000	4.000	3.000

Dimensions are nominal

EZ BOX Heavy Wall, 25 cu. in., New Work, Nail-on, Ceiling Box with Wire Clamps & Ground Lug



2 hour fire-rated

EZ25CNG-HW is a 25 cu. in., a nail-on, heavy duty, ceiling box for new work (construction) applications for residential and light commercial projects. It is a heavy duty new construction ceiling box to use where a more durable electrical box is preferred. The harder shell is designed to resist flexing and hold its shape. It features enhanced angled nails for easy mounting between studs and 5 stronger clamps for EZ secure wiring. EZ25CNG-HW also features a ground lug for EZ grounding when required. CANTEX ceiling boxes are constructed with durable polycarbonate for added resilience.

- Supports fixtures up to 50 lbs.
- Not suitable for ceiling fans.

25 Cubic Inch

Part Number	Carton Quantity	Height	Width	Depth
EZ25CNG-HW	24	4.000	4.000	3.000

Dimensions are nominal

EZ BOX® Heavy Wall Ceiling & Ceiling Fan Boxes

Technical drawings for each product can be found on the product pages at www.cantexinc.com.

EZ BOX® Heavy Wall Ceiling Fan Box

EZ BOX Heavy Wall, 25 cu. in., New Work Ceiling Box with Hanger Bar and Wire Clamps



EZ25CH-HW EZ BOX is a 25 cu. in, heavy wall, new work ceiling box with an attached bar hanger for extra support and adjustability. The heavy wall or harder shell of EZ25CH-HW is designed to use where a more durable electrical box is preferred. The harder shell is designed to resist flexing and to hold its shape. The adjustable bar hanger adjusts from 14" to 18" for added support and adaptability. It also features 5 integral wire clamps. CANTEX ceiling boxes are constructed with durable polycarbonate for added resilience.

- Supports fixtures up to 50 lbs.
- Not suitable for ceiling fans.

25 Cubic Inch

Part Number	Carton Quantity	Height	Width	Depth
EZ25CH-HW	20	4.000	4.000	3.000

Dimensions are nominal



2 hour fire-rated

EZ BOX Heavy Wall, 25 cu. in., New Work Ceiling Box with Hanger Bar, Wire Clamps & Ground Lug



EZ25CHG-HW EZ BOX is a 25 cu. in, heavy wall new work ceiling box with a ground lug and an attached bar hanger for extra support and adjustability. The heavy wall or harder shell of EZ25CHG-HW is designed to use where a more durable electrical box is preferred. The harder shell is designed to resist flexing and to hold its shape. The adjustable bar hanger adjusts from 14" to 18" for added support and adaptability. It also features 5 integral wire clamps and a ground lug for when grounding when required. CANTEX ceiling boxes are constructed with durable polycarbonate for added resilience.

- Supports fixtures up to 50 lbs.
- Not suitable for ceiling fans.

25 Cubic Inch

Part Number	Carton Quantity	Height	Width	Depth
EZ25CHG-HW	20	4.000	4.000	3.000

Dimensions are nominal



2 hour fire-rated

EZ BOX® Heavy Wall Ceiling Fan Box

EZ BOX Heavy Wall, 25 cu. in., New Work, Nail-on Ceiling Fan Box with Wire Clamps and L-Bracket



EZ25CF-HW EZ BOX ceiling fan box is a nail-on, heavy duty ceiling fan box for new work (construction) applications for residential and light commercial projects. It features a harder shell that will not break or change shape in extreme conditions. It also features an attached metal nail-on L-bracket for easy installation and added support. CANTEX ceiling boxes are constructed with durable polycarbonate for added resilience.

- Supports fixtures up to 50 lbs.
- Supports ceiling fans up to 35 lbs.

25 Cubic Inch

Part Number	Carton Quantity	Height	Width	Depth
EZ25CF-HW	24	4.000	4.000	3.000

Dimensions are nominal



2 hour fire-rated

EZ BOX[®] Adjustable Switch and Outlet Boxes

CANTEX Adjustable EZ BOXES[®]

The design of a CANTEX Adjustable EZ BOX lets you adjust the box to most wall thicknesses with a simple screwdriver. The patented brackets on the CANTEX adjustable EZ BOXES are perfect for kitchen and bathroom applications where the type of wall finish often determines the necessary depth.

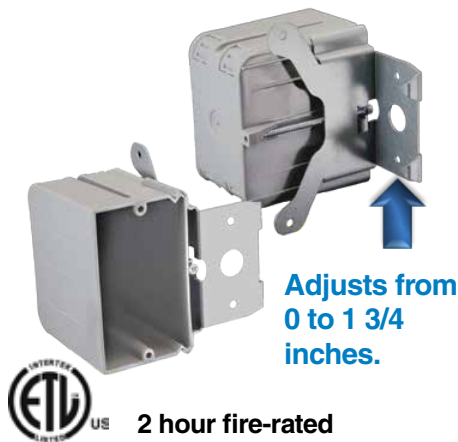
Our adjustable EZ BOXES can solve most wall covering thickness problems for both old and new work applications because they can adjust from 0 to 1 3/4 inches after installation. They are also EZ to mount on any standard wood or metal stud. In addition to being engineered for easy, cost saving installation, they are constructed with resilient PVC for durability.

Technical drawings for each product can be found on the product pages at www.cantexinc.com.



EZ BOX[®] Adjustable Single Gang Box

EZ BOX Adjustable, 1-Gang, 21 cu. in., New Work and Retrofit Switch & Outlet Box with Adjustable Bracket



EZ21SBZ-ADJ EZ BOX is the CANTEX 1-gang, adjustable, 21 cu. in., new construction, electrical switch and outlet box with an adjustable bracket that allows adjustment of depth to various drywall thicknesses and wall finishes. It is a perfect solution when a wall covering has already been installed. It is great for construction (new work) and retrofit applications. EZ21SBZ-ADJ is easy to mount to standard wood or metal studs and the adjustable metal bracket will adjust to almost any wall coverings.



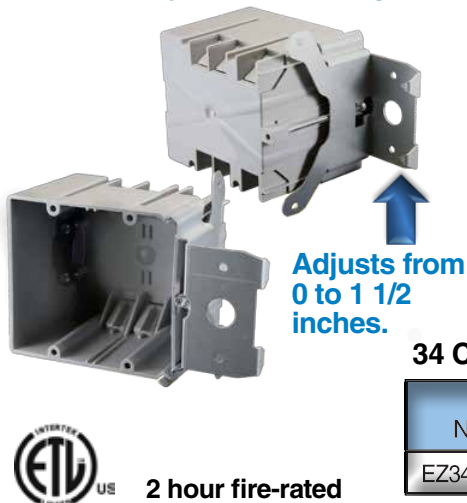
21 Cubic Inch

Part Number	Carton Quantity	Height	Width	Depth
EZ21SBZ-ADJ	24	3.650	2.140	3.300

Dimensions are nominal

EZ BOX[®] Adjustable Two Gang Box

EZ BOX Adjustable, 2-Gang, 34 cu. in., New Work & Retrofit Switch and Outlet Box with Adjustable Bracket



EZ34DBZ-ADJ EZ BOX is the CANTEX 2-gang, adjustable, 34 cu. in., new construction, electrical switch and outlet box with an adjustable bracket that allows adjustment of depth to various drywall thicknesses and wall finishes. It is a perfect solution when a wall covering has already been installed. It is great for new construction (new work) and retrofit applications. EZ34DBZ-ADJ is easy to mount to standard wood or metal studs and the adjustable metal bracket will adjust to almost any wall coverings.

34 Cubic Inch

Part Number	Carton Quantity	Height	Width	Depth
EZ34DBZ-ADJ	16	3.650	4.000	3.000

Dimensions are nominal



EZ BOX® Vapor Proof Switch, Outlet and Ceiling Boxes

EZ BOX® Vapor Boxes

Our energy efficient EZ BOX Vapor Boxes are a great solution for meeting the needs of the energy efficiency requirements of modern homes. These new construction (new work) vapor-tight boxes feature offset flanges covered with foam gaskets and additional gaskets over cable entry points, creating a vapor tight seal. EZ BOX Vapor Boxes are engineered for easy, cost saving installation and constructed with resilient PVC for durability. They are great for exterior walls, garages, sunporches and any spaces that may subject to unwanted air-flow. They also meet all applicable NEMA specifications.



EZ BOX® Switch and Outlet Vapor Boxes

EZ BOX 1-Gang, 23 cu. in., New Work, Nail-on Vapor Proof Box with Wire Clamps and Gasket



EZ23SN-RG is a 1-gang, new work, vapor-proof EZ Box. It is an energy efficient electrical box for walls subject to unwanted air-flow. It eliminates air leaks with a solid drywall flange covered with a foam gasket and additional foam gaskets over self-clamping cable entry clamps. These foam gaskets create a vapor-tight seal preventing air from flowing through the box. The 23 cubic inch EZ Box is the largest 1-gang box in the industry. EZ23SN-RG also feature enhanced angled nails for EZ secure installation.



2 hour fire-rated



Foam seal at clamp entry points

23 Cubic Inch

Part Number	Carton Quantity	Height	Width	Depth
EZ23SN-RG	60	3.700	2.300	3.740

Dimensions are nominal

EZ BOX 2-Gang, 36 cu. in., New Work, Nail-on, Vapor Proof Box with Wire Clamps and Gasket



EZ36DN-RG is a 2-gang, new work, vapor-proof EZ Box. It is an energy efficient electrical box for walls subject to unwanted air-flow. It eliminates air leaks with a solid drywall flange covered with a foam gasket and additional foam gaskets over self-clamping cable entry v-clamps, creating a vapor-tight seal preventing air from flowing through the box. The EZ36DN-RG also features angled nails for EZ secure installation.



2 hour fire-rated



Foam seal at clamp entry points

36 Cubic Inch

Part Number	Carton Quantity	Height	Width	Depth
EZ36DN-RG	48	3.600	4.000	3.300

Dimensions are nominal

EZ BOX 3-Gang 54 cu. in., New Work, Nail-on, Vapor Proof Box with Wire Clamps and Gasket



EZ54TN-RG is a 3-gang new work, vapor-proof EZ Box. It is an energy efficient electrical box for walls subject to unwanted air-flow. It eliminates air leaks with a solid drywall flange covered with a foam gasket and additional foam gaskets over self-clamping cable entry v-clamps, creating a vapor-tight seal and allowing no air to flow through the box. The EZ36DN-RG also features angled nails for EZ installation.



2 hour fire-rated



Foam seal at clamp entry points

54 Cubic Inch

Part Number	Carton Quantity	Height	Width	Depth
EZ54TN-RG	24	3.600	5.800	3.300

Dimensions are nominal

EZ BOX® Ceiling Vapor Box

EZ BOX 26 cu. in., New Work, Nail-on, Vapor Proof Ceiling Box with Wire Clamps and Gasket



EZ26CN-RG is a new work, ceiling vapor proof EZ Box. It is an energy efficient electrical box. It eliminates air leaks with a solid drywall flange covered with a foam gasket and additional foam gaskets over self-clamping cable entry v-clamps, creating a vapor-tight seal and allowing no air to flow through the box. CANTEX ceiling boxes are constructed with durable polycarbonate for added resilience.



2 hour fire-rated



Foam seal at clamp entry points

26 Cubic Inch

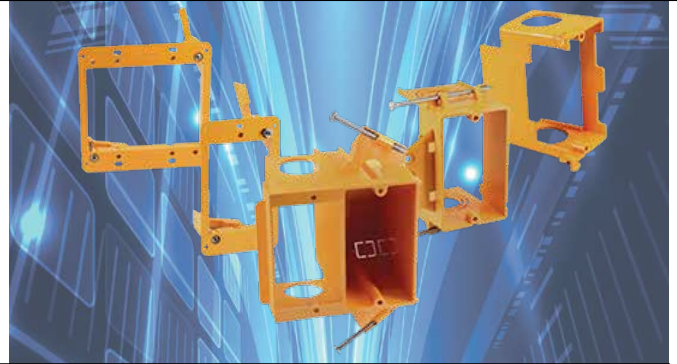
Part Number	Carton Quantity	Height	Width	Depth
EZ26CN-RG	48	3.960	3.960	2.740

Dimensions are nominal

EZ BOX® Low Voltage Brackets

EZ BOX® Low Voltage Brackets

CANTEX EZ BOX Low Voltage Brackets are designed specifically for the installation of low-voltage devices in an existing wall. These backless boxes accommodate the space and bend-radius requirements of coaxial and communication cables. They also eliminate the need for metal plates, screws and lags. These low-voltage brackets are engineered for easy, cost saving installation and constructed with resilient PVC for durability. The orange color makes them easy to identify as low voltage.



EZ BOX® Old Work Low Voltage

EZ BOX 1-Gang, Old Work, Low Voltage Bracket

EZLV1-OW is a 1-Gang EZ BOX Old Work, Low Voltage Bracket is used for low voltage installations in renovation (old work) applications. The backless design is great for the large or deep low-voltage wiring needed for communications and cable installations. It fits standard 1-gang faceplates.



- Wing tabs allow for easy, secure stud alignment & mounting
- Orange color easily identifies the low voltage application

1-Gang Low Voltage Bracket

Part Number	Carton Quantity	Height	Width	Depth
EZLV1-OW	12	4.300	2.500	1.65

Dimensions are nominal



EZ BOX 2-Gang, Old Work, Low Voltage Bracket

EZLV2-OW is a 2-Gang EZ BOX Old Work, Low Voltage Bracket is used for low voltage installation in renovation (old work) applications. The backless design is great for the large or deep low-voltage wiring needed for communications and cable installations, and it fits standard 2-gang faceplates.



- Wing tabs allow for easy, secure stud alignment & mounting
- Orange color easily identifies the low voltage application

2-Gang Low Voltage Bracket

Part Number	Carton Quantity	Height	Width	Depth
EZLV2-OW	6	4.300	4.310	1.650

Dimensions are nominal



EZ BOX® Single Gang Old or New Work Add-On Bracket

EZ BOX 1-Gang, Low Voltage, Add-on Bracket

EZLVSB is a 1-Gang, Low Voltage EZ BOX Add-on Bracket. It attaches to most non-metallic boxes to allow for low and high voltage applications side by side. EZLVSB is for both old and new work applications. The backless design is great for the large or deep low-voltage wiring needed for communications and cable installations. It fits most standard faceplates.



- 2 round openings for EZ installation.
- Orange color easily identifies the low voltage application

1-Gang Low Voltage Add-on Bracket

Part Number	Carton Quantity	Height	Width	Depth
EZLVSB	24	3.700	1.780	3.000

Dimensions are nominal



Technical drawings for each product can be found on the product pages at www.cantexinc.com.

EZ BOX® Low Voltage Brackets

Technical drawings for each product can be found on the product pages at www.cantexinc.com.

EZ BOX® New Work Low Voltage



EZ BOX 1-Gang, New Work, Low Voltage Bracket

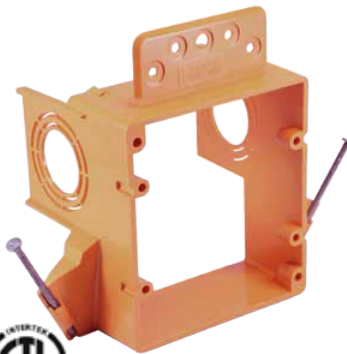
EZLV1-NWN EZ BOX is a 1-Gang, New Work, Low Voltage Bracket with Nails used for low voltage installations for new construction projects (new work) applications. The backless design is great for the large or deep low-voltage wiring needed for communications and cable installations, and it fits standard 1-gang faceplates. Round knockouts allow for a multiple sizes of fittings.

- Molded bracket easily mounts on wood or steel studs
- Orange color easily identifies the low voltage application

1-Gang Bracket with Nails

Part Number	Carton Quantity	Height	Width	Depth
EZLV1-NWN	24	3.730	2.360	3.150

Dimensions are nominal



EZ BOX 2-Gang New Work Low Voltage Bracket

EZLV2-NWN EZ BOX is a 2-Gang, New Work, Low Voltage Bracket used for low voltage installations for new construction projects (new work) applications. The backless design is great for the large or deep low-voltage wiring needed for communications and cable installations, and it fits standard 2-gang faceplates. Round knockouts allow for a multiple sizes of fittings.

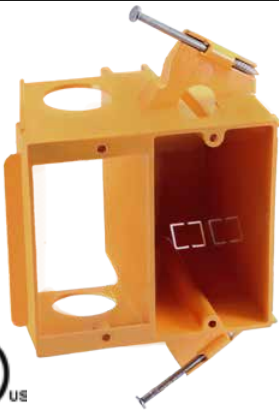
- Molded bracket easily mounts on wood or steel studs
- Orange color easily identifies the low voltage application

2-Gang Bracket with Nails

Part Number	Carton Quantity	Height	Width	Depth
EZLV2-NWN	24	3.800	4.100	3.150

Dimensions are nominal

EZ BOX® New Work Dual Voltage Bracket



EZ BOX 2-Gang, New Work, Dual Voltage Bracket with Nails

EDV2B EZ BOX is a 2-Gang, New Work, Dual Voltage Bracket used in construction (new work) applications where dual-voltage applications need to be side by side. The backless design is great for the large or deep low-voltage wiring needed for communications and cable installations, and it fits standard 2-gang faceplates. Four knockouts and two round opening for EZ installation.

- Molded bracket easily mounts on wood or steel studs
- Orange color easily identifies the low voltage application

2-Gang Dual Voltage Box/Bracket

Part Number	Carton Quantity	Height	Width	Depth
EDV2B	16	3.800	4.000	3.670

Dimensions are nominal

EZ BOX® Low Voltage Divider



EZ BOX Low Voltage Divider for Use with Multi-gang Heavy Wall Boxes

EZLVDSW EZ BOX Low Voltage Divider is used with heavy wall PVC electrical boxes to allow the installation of a communication device in a closed back multi-gang deep box along with a standard switch or outlet device. EZLVDSW is used with the following CANTEX multi-gang heavy wall EZ BOXES: EZ35DN-HW, EZ53TN-HW, and EZ64QN-HW.

- Transforms a multi-gang Heavy Wall box into a high and low voltage box
- Orange color easily identifies the low voltage application

Low Voltage Divider

Part Number	Carton Quantity	Height	Width	Depth
EZLVDSW	50	3.400	3.400	.100

Dimensions are nominal

EZ BOX® Red Alarm Boxes

EZ BOX® Red Alarm Boxes

CANTEX Red Alarm EZ BOXES have the same enhanced installation features as our other boxes, but their bright red color makes them easily identifiable for fire safety applications. These designated red boxes are the best option for fire alarms or smoke detectors, since the bright red color makes them easy to identify and alarm and smoke detector boxes.



EZ BOX® Single Gang Red Alarm Boxes

EZ BOX 1-Gang, New Work, Nail-On, Red Alarm Boxes with Knockouts

EZ18SNA, EZ20SNA, and EZ23SNA are 1-gang new work alarm EZ BOXES that are ideal for residential and light commercial new construction (new work) applications for alarms and smoke detectors. These 1-gang box red alarm boxes feature the same enhanced installation features as our other boxes, but their bright red color makes them easily identifiable.



2 hour fire-rated



4 knockouts for EZ wiring

18 Cubic Inch

Part Number	Carton Quantity	Height	Width	Depth
EZ18SNA	100	3.700	2.250	2.875

Dimensions are nominal

20.3 Cubic Inch

Part Number	Carton Quantity	Height	Width	Depth
EZ20SNA	100	3.700	2.250	3.125

Dimensions are nominal

23 Cubic Inch

Part Number	Carton Quantity	Height	Width	Depth
EZ23SNA	100	3.700	2.188	3.500

Dimensions are nominal

EZ BOX® Red Alarm Ceiling Boxes

EZ BOX 18 cu. in., New Work, Nail-on, Red Alarm Ceiling Box with Wire Clamps

EZ18CNA EZ BOX is an 18 cu. in. new work ceiling box for residential and light commercial new construction (new work) applications for alarms and smoke detectors. This red alarm designated ceiling box features the same enhanced installation features as our other ceiling boxes, but the bright red color makes it easily identifiable. CANTEX ceiling boxes are constructed with durable polycarbonate for added resilience.



2 hour fire-rated

- 4 wire clamps for EZ wiring.
- Supports fixtures up to 50 lbs.

18 Cubic Inch

Part Number	Carton Quantity	Height	Width	Depth
EZ18CNA	75	3.500	3.500	2.680

Dimensions are nominal

EZ BOX 20 cu. in., New Work, Nail-on, Red Alarm Ceiling Box with Wire Clamps

EZ20CNA EZ BOX is an 20 cu. in., new work ceiling box for residential and light commercial new construction (new work) applications for alarms and smoke detectors. This red alarm designated ceiling box features the same enhanced installation features as our other ceiling boxes, but the bright red color makes it easily identifiable. CANTEX ceiling boxes are constructed with durable polycarbonate for added resilience.



2 hour fire-rated

- 6 wire clamps for EZ wiring.
- Supports fixtures up to 50 lbs.

20 Cubic Inch

Part Number	Carton Quantity	Height	Width	Depth
EZ20CNA	75	4.000	4.000	2.300

Dimensions are nominal

EZ BOX® ENT (Electrical Non-Metallic Tubing) Boxes

Our EZ BOX ENT boxes are designed for use with our other light, flexible and strong ENT (Electrical Non-Metallic Tubing) products. With specifically designed concentric knockouts, they are perfect for creating ENT electrical systems with ENT Tubing and ENT fittings in walls, floors and non-plenum ceiling spaces. All our PVC ENT products are made of resilient non-conductive PVC that won't corrode or conduct electricity and can be used with ENT snap-in fittings or standard Schedule 40 fittings.



EZ BOX® ENT Switch and Outlet Boxes

EZ BOX ENT 1-Gang, 16 cu. in. Switch or Outlet Box

EN16SB is a 1-Gang, 16 cu. in., ENT switch or outlet box designed for use with electrical nonmetallic tubing (ENT) and standard electrical devices and switches in residential and light commercial applications. EN16SB features molded flanges and three 1/2 inch knockouts for EZ installation and multiple connections.



2 hour fire-rated



Three 1/2 inch knockouts for EZ installation of ENT fittings.

16 Cubic Inch 1-Gang ENT Box

Part Number	Carton Quantity	Height	Width	Depth
EN16SB	25	3.000	2.260	2.970

Dimensions are nominal

EZ BOX ENT 4 Inch Square ENT Switch or Outlet Box

EN20DB is a 4 inch Square, 20 cu. in., ENT switch or outlet box designed for use with electrical nonmetallic tubing (ENT). 4" square boxes provide maximum volume for multiple conductors and connectors running in multiple directions. EN20DB features molded flanges and 7 knockouts for EZ installation and multiple connections.



2 hour fire-rated



A combination of seven 1/2 & 3/4 inch knockouts for connecting ENT fittings.

20 Cubic Inch 4" Square ENT Box

Part Number	Carton Quantity	Height	Width	Depth
EN20DB	100	4.000	4.000	1.380

Dimensions are nominal

EZ BOX 1-Gang, 22 cu. in., ENT Electrical Box

EZ BOX EN22SB is a 1-gang ENT box designed for use with electrical non-metallic tubing (ENT). This 22 cu. in. box is the largest capacity ENT 1-gang box available today. It features ample room for all necessary ENT wiring apparatus. This box includes 1/2, 3/4 and 1 inch concentric knockouts to fit multiple sizes of ENT tubing and fittings.



2 hour fire-rated



Four Concentric knockouts for use with multiple sizes of ENT fittings.

22 Cubic Inch 1-Gang ENT Box

Part Number	Carton Quantity	Height	Width	Depth
EN22SB	25	3.690	2.250	3.250

Dimensions are nominal

EZ BOX® ENT Boxes

Technical drawings for each product can be found on the product pages at www.cantexinc.com.

EZ BOX® ENT Switch and Outlet Boxes



EZ BOX 2-Gang, 38 cu. in. ENT Electrical Box

EZ BOX EN38DB is a 2-Gang ENT box designed for use with electrical non-metallic tubing (ENT). It features ample room for all necessary ENT wiring apparatus and 1/2, 3/4 and 1 1/4 inch concentric knockouts to fit multiple sizes of ENT tubing and fittings.



6 Concentric knockouts for use with multiple sizes of ENT fittings

22 Cubic Inch 1-Gang ENT Box

Part Number	Carton Quantity	Height	Width	Depth
EN38DB	25	3.700	3.960	3.500

Dimensions are nominal



2 hour fire-rated

EZ BOX® ENT Ceiling Boxes



EZ BOX 20 cu. in., Octagon ENT Ceiling Box

EN20C is a 20 cu. in., Octagon ENT Ceiling Box for residential and light commercial ceiling fixture applications. EN20C features six knockouts, including a combination of 1/2 inch and 3/4 inch knockouts for multiple wiring options. CANTEX ceiling boxes are constructed with durable polycarbonate for added resilience.

- Supports fixtures up to 50 lbs.
- Not suitable for ceiling fans.



Six knockouts, including a combination of 1/2 & 3/4 inch knockouts for ENT fittings.

20 Cubic Inch ENT Ceiling Box

Part Number	Carton Quantity	Height	Width	Depth
EN20C	50	3.670	3.670	2.200

Dimensions are nominal



2 hour fire-rated



EZ BOX 20 cu. in., Octagon ENT Ceiling Box with L-Bracket

EN20CB is a 20 cu. in., octagon ENT Ceiling Box with an L-Bracket for residential and light commercial ceiling fixture applications. The attached L-bracket makes installation EZ and the 6 knockouts provide multiple EZ wiring options. CANTEX ceiling boxes are constructed with durable polycarbonate for added resilience.

- Supports fixtures up to 50 lbs.
- Not suitable for ceiling fans.



Six knockouts, including a combination of 1/2 & 3/4 inch knockouts for ENT fittings.

20 Cubic Inch Ceiling Box with L-Bracket

Part Number	Carton Quantity	Height	Width	Depth
EN20CB	50	3.670	3.670	2.200

Dimensions are nominal



2 hour fire-rated

EZ BOX® Handy Box & Covers

EZ BOX Handy 1-Gang, Multi-Purpose Screw or Switch & Outlet Box with Wire Clamps and Knockouts



EZ12SO EZ BOX is a multi-purpose electrical switch and outlet box for residential or light commercial electrical installations, including switch, outlet, toggle switch and ground fault circuit interrupters. It features knockouts and clamps for wiring and mounting versatility.

- Multi-Purpose Electrical Switch/Outlet Box
- Four cover styles available
- Easy to install
- Meets NEMA specifications

12 Cubic Inch Single Gang Box

Part Number	Carton Quantity	Height	Width	Depth
EZ12SO	50	4.000	2.150	1.930

Dimensions are nominal



EZ BOX® Handy Cover Options

EZ BOX 1-Gang Handy Box Blank Cover



Blank Cover

EZSL-BLANK is a 1-gang blank cover is a sleek, yet durable wall plate used to close off an electrical box not in use. EZSL-Blank features a 1/2 in. knockout for access into the box without removing the entire cover. This sleek blank cover is designed for use with CANTEX EZ12SO Handy Wall Multi-Purpose Residential Electrical Switch and Outlet Box for residential and light commercial applications.



Part Number	Carton Quantity	Height	Width	Depth
EZSL-BLANK	25	4.290	2.360	.250

Dimensions are nominal

EZ BOX 1-Gang Handy Box Switch Cover



Switch Cover

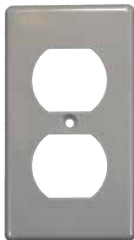
EZSL-TGL is a 1-gang Handy Box wall switch cover creates a sleek, yet durable wall plate for residential and light commercial applications. EZSL-TGL is designed for use with the CANTEX EZ12SO Handy Wall Multi-Purpose Residential Electrical Switch and Outlet Box for residential and light commercial applications.



Part Number	Carton Quantity	Height	Width	Depth
EZSL-TGL	25	4.290	2.360	.250

Dimensions are nominal

EZ BOX 1-Gang Handy Box Duplex Cover



Duplex Cover

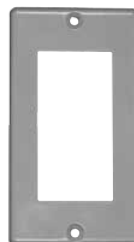
EZSL-DPLX is a 1-gang Handy Box duplex cover creates a sleek, yet durable wall plate for residential and light commercial outlet applications. EZSL-DPLX is designed for use with the CANTEX EZ12SO Handy Wall Multi-Purpose Electrical Switch and Outlet Box for residential and light commercial applications.



Part Number	Carton Quantity	Height	Width	Depth
EZSL-DPLX	25	4.290	2.360	.250

Dimensions are nominal

EZ BOX 1-Gang Handy Box GFCI Receptacle Cover



GFCI Receptacle Cover

EZSL-GFCI is a 1-gang GFCI cover creates a sleek, yet durable wall plate for residential and light commercial ground fault circuit interrupter applications. EZSL-GFCI is designed for use with CANTEX EZ12SO Handy Wall Multi-Purpose Residential Electrical Switch and Outlet Box for residential and light commercial applications.



Part Number	Carton Quantity	Height	Width	Depth
EZSL-GFCI	25	4.290	2.360	.250

Dimensions are nominal

Technical drawings for each product can be found on the product pages at www.cantexinc.com.

EZ BOX® Accessories

Technical drawings for each product can be found on the product pages at www.cantexinc.com.

EZ BOX® Non-metallic Round Plaster Ring

EZ BOX Round EZ BOX Plaster Ring

EZ03YC and EZ04YC EZ BOX round plaster rings (also called a mud ring) provide riser or extensions for any standard 4 inch ceiling boxes. CANTEX round plaster rings are constructed with durable polycarbonate for added resilience.



- Works with most standard 4" ceiling boxes
- Supports fixtures up to 50 lbs.



2 hour fire-rated

4" Round Plaster Ring

Part Number	Carton Quantity	Height	Width	Depth	Rise
EZ03YC	100	4.000	4.000	.500	1/2
EZ04YC	100	4.000	4.000	.625	5/8

Dimensions are nominal

EZ BOX® Electrical Switch and Outlet Box Cover Risers

EZ BOX 1-Gang Electrical Box Cover Risers

EZ03SXA, EZ04ES, EZ05ES, EZ06ES and EZ08ES are 1-gang cover risers or extensions for any standard single gang PVC boxes. The risers feature 4 notches for easy installation of screws to secure the riser. These cover risers work with most standard 1-gang PVC switch and outlet boxes.



4 strategically placed notches for screws make installation easy



2 hour fire-rated

1-Gang Box Cover Risers

Part Number	Carton Quantity	Height	Width	Depth	Rise
EZ03SXA	100	4.000	4.000	.500	1/2
EZ04ES	50	4.000	4.000	.625	5/8
EZ05ES	50	4.000	4.000	.750	3/4
EZ06ES	40	4.000	4.000	1.000	1
EZ08ES	30	4.000	4.000	1.250	1 1/4

Dimensions are nominal

EZ BOX 2-Gang Electrical Box Cover Risers

EZ06DXA, EZ08ED, and EZ09ED EZ BOX are 2-gang cover risers that provide risers or extensions for any standard 2-gang PVC boxes. These risers have 4 notches for easy installation of screws to secure the risers. They work with most standard 2-gang PVC boxes.



4 strategically placed notches for screws make installation easy



2 hour fire-rated

2-Gang Box Cover Risers

Part Number	Carton Quantity	Height	Width	Depth	Rise
EZ06DXA	75	4.000	4.000	.500	1/2
EZ08ED	50	4.000	4.000	.625	5/8
EZ09ED	50	4.000	4.000	.850	3/4

Dimensions are nominal

Technical drawings for each product can be found on the product pages at www.cantexinc.com.

EZ BOX® Round Blank Cover

EZ BOX 4 in. Round EZ BOX Blank Cover



2 hour fire-rated



Keyhole screw mounting design keeps cover secure

EYXKL is 4 inch round box cover that is ideal for covering 4 inch electrical boxes not in use. This durable PVC cover will not rust or corrode and the keyhole and notch design makes installation fast, easy and secure. EYXKL works with most standard 4 inch round PVC electrical boxes.

4" Round Blank Cover

Part Number	Carton Quantity	Height	Width	Depth
EZYKL	100	4.000	4.000	.1000

Dimensions are nominal

EZ BOX 4 in. Round EZ BOX Blank Cover with 1/2 Knockout



2 hour fire-rated



Keyhole screw mounting design keeps cover secure

EZYKL1 is a 4 inch round box cover with a knockout. It is ideal for covering 4 inch electrical boxes not in use, and the knockout provides easy access without having to remove the cover. This durable PVC cover will not rust or corrode and the keyhole and notch design makes installation fast, easy and secure. EYXKL1 works with most standard 4 inch round PVC electrical boxes.

4" Round Blank Cover with Knockout

Part Number	Carton Quantity	Height	Width	Depth
EZYKL1	100	4.000	4.000	.1000

Dimensions are nominal

EZ BOX® 4" Square Switch and Outlet Box Cover

EZ BOX 2-Gang, 4 in. Square Blank Cover



2 hour fire-rated



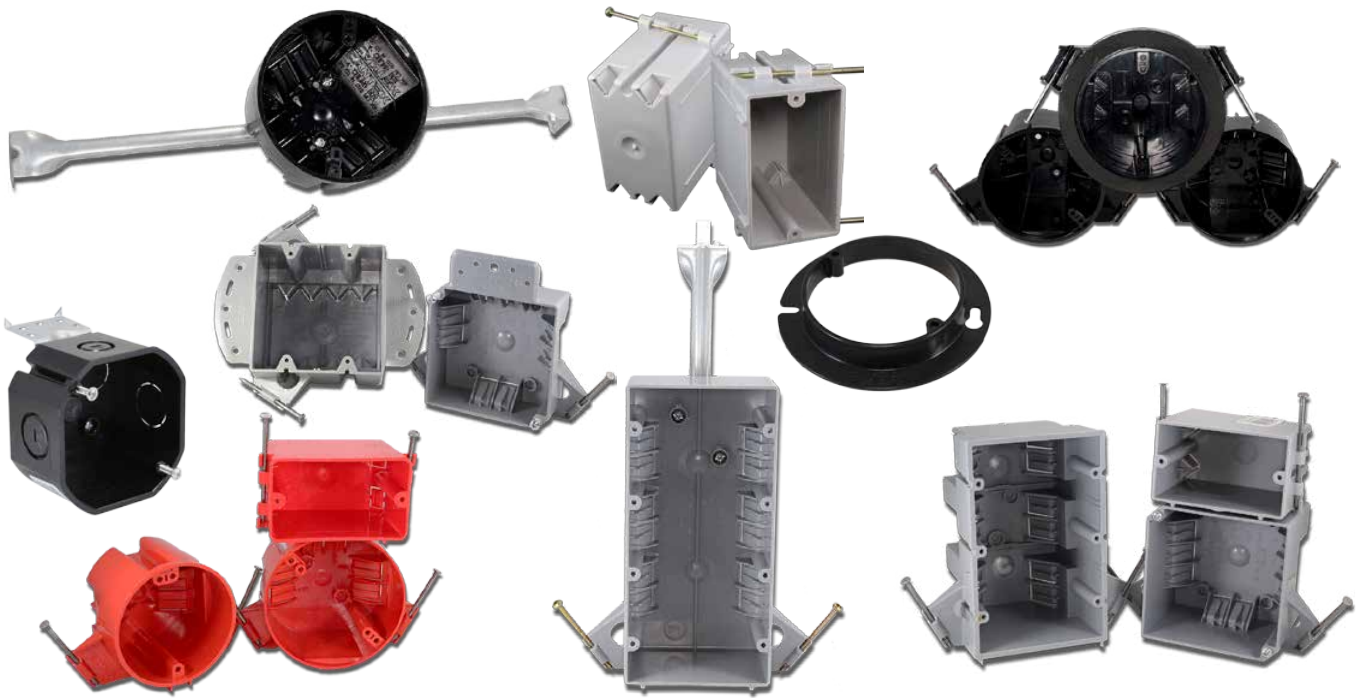
Keyhole screw mounting design keeps cover secure

EZXKL is 2-gang blank box cover is ideal for covering 2-gang electrical boxes not in use. This durable PVC cover will not rust or corrode and the keyhole and notch design makes installation fast, easy and secure. Works with most standard 2-gang or 4 inch PVC boxes

4" 2-Gang Blank Cover

Part Number	Carton Quantity	Height	Width	Depth
EZYKL	100	4.000	4.000	.1000

Dimensions are nominal



CANTEX EZ BOX[®] CROSS REFERENCE GUIDE



CANTEX EZ BOX® Cross Reference Guide

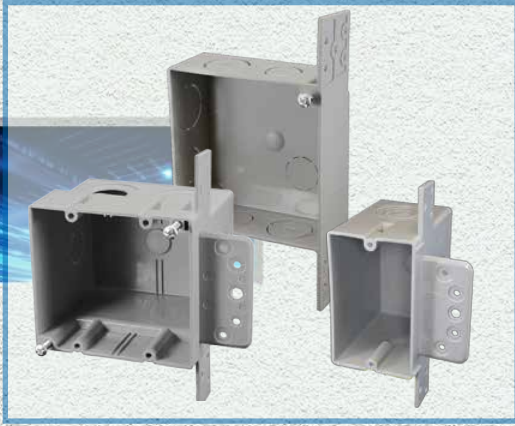
CANTEX PART NO	DESCRIPTION	T&B / CAR-LON PART NO.	T&B / BOWERS PART NO.	T&B / CHALLENGER PART NO.	ALLIED PART NO.	RACO PART NO.	SLATER (P&S) PART NO.	THEPITT PART NO.
EDV2B	2 G NW DUAL VOLTAGE BRACKET W/INALS	SC200DV						
EN16SB	16 CU IN 1 G NW ENT BOX W/1/2" CONCENTRIC KO'S	A58381D						
EN18SB	18 CUBIC INCH SINGLE GANG ENT BOX	A58381D/				7050		
EN20CB	20.3 CUBIC INCH ENT CEILING BOX	A615DE				7052		
EN20CB	20.5 CU IN 4" ENT OCTAGON NW CEILING BOX 1/2 - 3/4 KO	A615DE						
EN20CBL	20.5 CU IN 4" ENT OCTAGON NW CEILING BOX 1/2 - 3/4 KO WITH BRACKET	A615DL						
EN20CH	20.3 CUBIC INCH ENT CEILING BOX WITH HANGER	A615DH				7051		
EN20DB	4" SQUARE NW 20 CU IN OUTLET BOX W/ 1/2 & 3/4 CONCENTRIC KO'S	A521DE						
EN22DB	22.5 CUBIC INCH 2 GANG ENT BOX	A4521DE				7053		
EN22SB	22 CU IN 1 G NW ENT BOX W/1" CONCENTRIC KO'S	A122						
EN31DB	31 CUBIC INCH 2 GANG ENT BOX	A5217DE				7054		
EN38DB	38 CU IN 4" SQUARE NW ENT OUTLET BOX W/CONCENTRIC KO'S	A238						
EZ03SXA	4" SQUARE SINGLE GANG SQUARE COVER W/1/2" RISER	A410	4S-1G	*4042-12		7772	RC1	1010
EZ03YC	4" ROUND PLASTER RING WITH 1/2" RISER	A471						
EZ04ES	4" SQUARE SINGLE GANG COVER WITH 5/8" RISER	A411				7071		
EZ04YC	4" ROUND PLASTER RING WITH 5/8" RISER	A472					4SP2-31R	
EZ06ES	4" SQUARE SINGLE GANG COVER WITH 3/4" RISER	A412						
EZ06DXA	4" SQUARE 2 GANG COVER WITH 1/4" RISER							
EZ06DXA	4" SQUARE 2 GANG SQUARE COVER W/1/2" RISER	A420	4S-2G	*4022-12		7778		
EZ06ES	4" SQUARE SINGLE GANG COVER WITH 1" RISER	A413						
EZ08ED	4" SQUARE 2 GANG COVER WITH 5/8" RISER	A421				7076		
EZ08ES	4" SQUARE SINGLE GANG COVER WITH 1 1/4" RISER	A414						
EZ08SB	8 CUBIC INCH BRACKETED SHALLOW BOX	B108B						
EZ08SF	8 CUBIC INCH FLANGED SHALLOW BOX	B108R						
EZ08ED	4" SQUARE 2 GANG COVER WITH 3/4" RISER	A422					4SP1-214	
EZ12SO	12 CU IN 1 GANG PVC HANDY BOX	B112HB			9318			
EZ14SO	14 CUBIC INCH SINGLE GANG OLD WORK BOX	B114R	114-OW	6070-4	9363-EW	7887	S1-18-W	1690
EZ16SN	16 CUBIC INCH SINGLE GANG NAIL-ON BOX	B116A	116N	SN-16	1085-N	7355	P1-18-F	
EZ18CN	18 CUBIC INCH CEILING BOX 3/0 NAIL-ON	B518A	3R-18N	3090-N	9355-NC2	7118	C1-18-RAC	16310
EZ18NG	18 CUBIC INCH CEILING BOX 3/0 NAIL-ON W/GRD LUG	B518P	3R-18NGP	3090-N-40	9335-NGC2	7918	C1-19-RGAC	16311
EZ18CO	18 CUBIC INCH OLD WORK CEILING BOX	B618R						
EZ18COG	18 CUBIC INCH OLD WORK CEILING BOX W/GRD LUG							
EZ18SN	18 CUBIC INCH SINGLE GANG NAIL-ON BOX	B118A	118N	SN-18	1086-N	7302	P1-18-F	1800
EZ18SO-HW	18 CU IN 1 G OW HAFD BOX W/MOUNTING EARS & SWING CLAMPS	BH118R			9368-EW			
EZSL-GFCI	HANDY BOX COVER - GFCI	HB1GF						
EZSL-TGL	HANDY BOX COVER - TOGGLE SWITCH	HB1SW			9319			
EZXKL	4" SQUARE 2 GANG BLANK COVER	A400	4S-B	*4041/45PB	9344			
EZYKL	4" ROUND BLANK COVER	E460						
EZY11	4" ROUND BLANK COVER WITH KNOCKOUT	A470D				7081		

CANTEX EZ BOX® Cross Reference Guide

CANTEX PART NO	DESCRIPTION	T&B / CARLON PART NO.	T&B / BOWERS PART NO.	T&B / CHALLENGER PART NO.	ALLIED PART NO.	RACO PART NO.	SLATER (P&S) PART NO.	THEPITT PART NO.
EZ18XN	18 CUBIC INCH 4 SQUARE SHALLOW NAIL-ON BOX	B418A		SN-418	9340-C2	7218	S4421RAC	1900
EZ20CH	20 CUBIC INCH CEILING BOX W/14" 1/4" -23 1/2" HANGER	B620H	4R-20BH	4070-94	9350-24C2	7335	S1-20-HAC	16117/16122
EZ20CHG	20 CUBIC INCH CEILING BOX W/4" 1/4"-23 1/2" HANGER WITH GROUND LUG	B620HG	4R-20BHGP	4070-94-40	9350-24GC2	7935	S1-20-HGAC	16118/16123
EZ20CN	20 CUBIC INCH CEILING BOX 4/0 NAIL-ON	B520A	4R-20N	4170-C	9351-NC2	7163	A1-20-RAC	
EZ20CNG	20 CUBIC INCH CEILING BOX 4/0 NAIL ON W/GRD LUG	B520P	4R-20NGP	4170-C-40	9351-NGC2	7823	S1-20-RGAC	16110
EZ20CZ	20 CU IN 3 OR 4" NW CEILING BOX DEEP RATED 35 LB FAN OR 50 LB FIXTURE	B720R-SHK			9350-KFR			
EZ20SN	20 CUBIC INCH SINGLE GANG NAIL-ON BOX	B120A	120N	1050	1088-N	7820		
EZ15BZ-ADJ	21 CU IN 1 G NW ADJUSTABLE BOX	B121ADJ			SB-1			
EZ22SN-HW	22 CU IN 1 G NW HARD BOX W/NAILS	BH122A-UPC			1089-N			
EZ23SN	23 CUBIC INCH SINGLE GANG NAIL-ON BOX	B122A						
EZ23SN-RG	22.5 CU IN 1 G NW VAPOR TIGHT W/NAILS	FN-23			1089-NV			
EZ25CF-HW	25 CU IN 3 OR 4" NW HARD ROUND CEILING BOX 35 FAN OR 50 FIXTURE W/L BRACKET	BH525L			9351-NFR/NKFR			
EZ25CHG-HW	25 CU IN 3 OR 4" ROUND NW CEILING BOX W/HANG BAR/GRD LUG	BH525HP			9350-16716GK			
EZ25CH-HW	25 CU IN 3 OR 4" ROUND NW CEILING BOX W/HANG BAR	BH525H			9350-16716K			
EZ25CNG-HW	25 CU IN 3 OR 4" NW HARD ROUND CEILING BOX W/GRD LUG 50 FIXTURE	BH525P						
EZ25ON-HW	25 CU IN 3 OR 4" NW HARD ROUND CEILING BOX W/NAILS RATED 50 LB FIXTURE	BH525A-UPC			9351-N			
EZ25DO	25 CUBIC INCH TWO GANG OLD WORK BOX	B225R		6062-4	9312-BWK		S2-32-W	3490
EZ26CN-RG	26 CU IN NW CEILING BOX VAPOR TIGHT W/NAILS V CLAMPS	FN-426-C-V			9351-NKV			
EZ28DN	32 CUBIC INCH TWO GANG NAIL-ON BOX	B232A	234N	SN-232	2300-NC4	7835	P2-35-RAC	3600
EZ32XN	32 CUBIC INCH 4 SQUARE DEEP NAIL-ON BOX	B432A	45-32N	4000-N	9343-NC2	7234	S44-35-RAC	
EZ34DBZ-ADJ	34 CU IN 2 G NW ADJUSTABLE BOX	B234ADJUC			SB-2			
EZ34DO-HW	34 CU IN 2 G OW HARD BOX W/MOUNTING EARS & SWING CLAMPS	BH234R			9329-EWEWK			
EZ35DN-HW	35 CU IN 2 G NW HARD BOX W/NAILS	BH235A			2300-NNK			
EZ36DN-RG	36 CU IN 2 NW G VAPOR TIGHT W/NAILS	FN-236-V			2302-NKV			
EZ44TN	44 CUBIC INCH THREE GANG NAIL-ON BOX	B344A	345N	1043-C	3300-NC6	7846	S3-54-RAC	4600
EZ53TN-HW	53 CU IN 3 G NW HARD BOX W/ NAILS	BH353A			3303-NNK			
EZ54TN-RG	54 CU IN 3 G NW VAPOR TIGHT W/NAILS	FN-354-V			3303-NKV			
EZ55QNB	55 CUBIC INCH FOUR GANG NAIL-ON & BRACKET	B455A	4605B	7074-BH	3300-NBC4	7844	S466-RAC	6100
EZ55TD	55CU IN OW W/MOUNTING EARS & SWING CLAMPS	B355R			9313-EWK			
EZ64QN-HW	64 CU IN 4 G NW HARD BOX W/NAILS AND SUPPORT FLANGE	BH464A			4304-VNR			
EZ68QN	68 CU IN OW W/MOUNTING EARS & SWING CLAMPS	B468R			9314-EWK			
EZLV1-NWN	1 G NW LOW VOLTAGE BRACKET W/NAILS	SC100A						
EZLV1-OW	1 G OW LOW VOLTAGE BRACKET	SC100RR						
EZLV2-NWN	2 G NW LOW VOLTAGE BRACKET W/NAILS	SC200A						
EZLV2-OW	2 G OW LOW VOLTAGE BOX	SC200RR						
EZLVD-SW	NW LOW VOLTAGE DIVIDER PLATE	SCDV						
EZLVB	1 G NW OR OW ADD ON BRACKET	SC100SC						
EZ50-EXT	1 G OW BOX EXTENDER	B1EXTB						
EZSL-BLANK	HANDY BOX BLANK COVER	H51BL			9322			
EZSL-DPLX	HANDY BOX COVER - DUPLEX RECEPTACLE	H51DP			9320			

Why CANTEX?

- Over 60 years of manufacturing American-made electrical products.
- Proven track record for quality and service.
- Nationwide distribution system for fast delivery time.



CANTEX®

Your Single-Source for ALL
PVC Electrical Products

Would you like to learn more
about our quality non-metallic
EZ BOXES?

Contact your CANTEX sales agent
or electrical distributor.

If you don't know who to contact,
visit www.cantexinc.com and use
our agent search tool or
call CANTEX at **817-215-7000**.

