

Catalog Number ERN (1 - 600A) 250 Volts AC or Less
Catalog Number ERS (1 - 600A) 600 Volts AC or Less

AMPERE RATINGS					
ERN 250V					
1	12	40	90	200	450
3	15	45	100	225	500
5	20	50	110	250	600
6	25	60	125	300	—
7	30	70	150	350	—
10	35	80	175	400	—
ERS 600V					
1	7	25	60	150	350
2	8	30	70	175	400
3	10	35	80	200	450
4	12	40	90	225	500
5	15	45	100	250	600
6	20	50	125	300	—

ERN/ERS SPECIFICATIONS

"Renewable", Non Time-Delay

Voltage Rating: ERN - 250VAC, ERS - 600VAC

Ampere Rating: 1 - 600 Amps

Interrupting Rating: 10,000 RMS Symmetrical Amps

Agency Approvals:

ERN (1-60A), (201-600A); ERS (1-100A), (201-600A)
 UL Listed, Class H, UL248-6, File E162363
 CSA Certified HRC-H per C22.22, No. 248.6, LR700489

BENEFITS:

- Economical, for general purpose use.
- Time lag design sustains overloads better than other Class H fuses.

APPLICATIONS:

- Circuits having relatively low levels of available short circuit current.
- Industrial and commercial applications having frequent outages where a renewable type fuse is desired.
- For motor applications, refer to EDISON ECNR/ECSR.

RECOMMENDED FUSEBLOCKS:

Refer to page 135 in this catalog.

RECOMMENDED UPGRADE:

ECNR/ECSR or LENRK/LESRK.

CROSS REFERENCE				
VOLTS	EDISON	BUSSMANN	GOULD	LITTELFUSE
250	ERN	REN	OT	RLN
600	ERS	RES	OTS	RLS

REPLACEMENT LINKS FOR RENEWABLE TYPE FUSES

Catalog Number ELNE (Amp) 250 Volts for ERN Fuses
Catalog Number ELS (Amp) 600 Volts for ERS Fuses

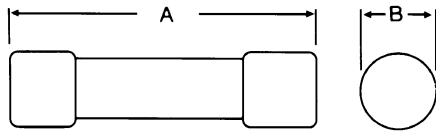
AMPERE RATINGS
Refer to respective table above.

CROSS REFERENCE				
VOLTS	EDISON	BUSSMANN	GOULD	LITTELFUSE
250	ELNE	LKN	RL	LKN
600	ELS	LKS	RLS	LKS

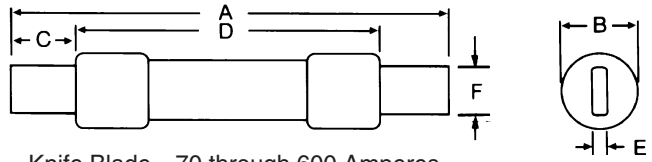


ELNE CLASS H RENEWABLE FUSE LINKS ELS CLASS H RENEWABLE FUSE LINKS

DIMENSIONS



Ferrule Design—1 through 60 Amperes

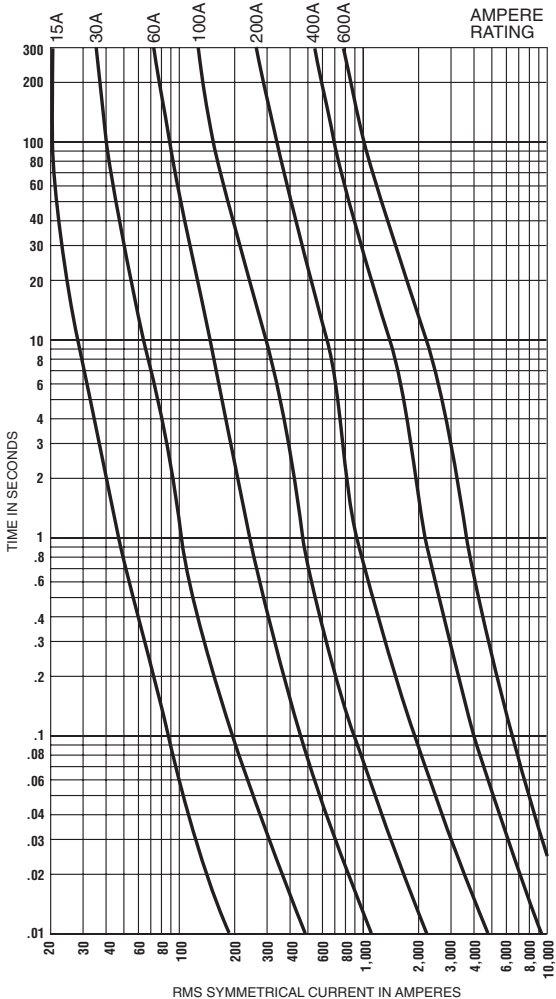


Knife Blade—70 through 600 Amperes

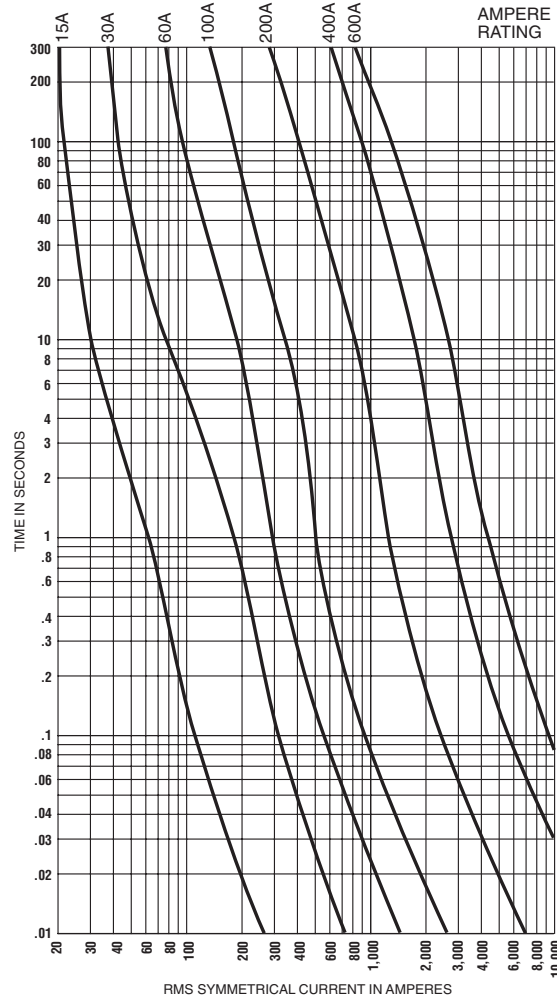
Volts and Catalog Number	Amps	Overall	Max. Diameter	Min. Blade Length	Min. Barrel Length	Blade Thickness	Blade Width
		A	B	C	D	E	F
ERN 250 VAC	1-30	2	9/16	-	-	-	-
	35-60	3	13/16	-	-	-	-
	70-100	5-7/8	-	1	-	1/8	3/4
	110-200	7-1/8	-	1-3/8	4-1/8	3/16	1-1/8
	225-400	8-5/8	-	1-7/8	4-5/8	1/4	1-5/8
ERS 600 VAC	450-600	10-3/8	-	2-1/4	5-3/16	1/4	2
	1-30	5	13/16	-	-	-	-
	35-60	5-1/2	1-1/16	-	-	-	-
	70-100	7-7/8	-	1	-	1/8	3/4
	110-200	9-5/8	-	1-3/8	6-1/8	3/16	1-1/8
ERS 600 VAC	225-400	11-5/8	-	1-7/8	7-1/8	1/4	1-5/8
	450-600	13-3/8	-	2-1/4	8-3/16	1/4	2

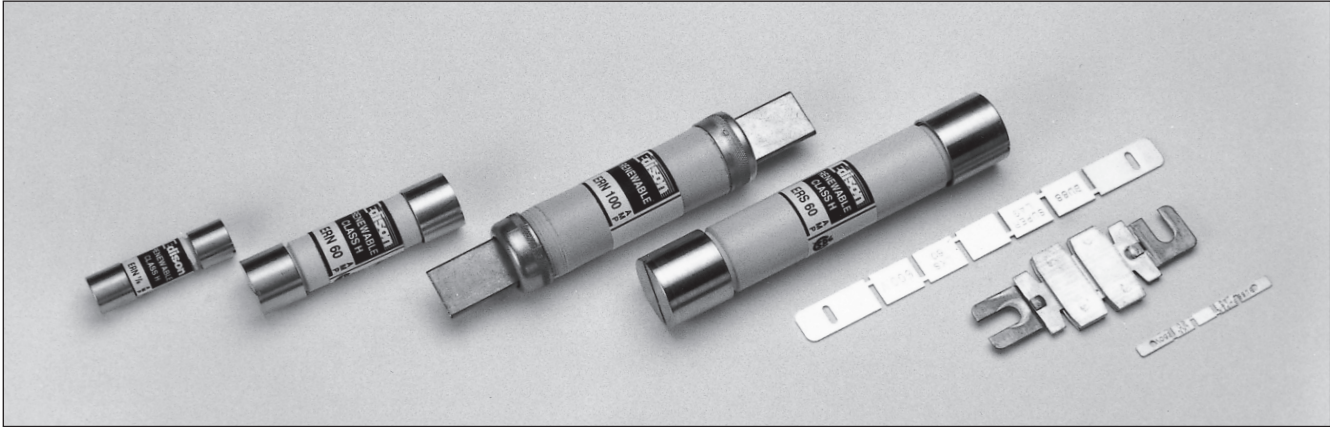
AVERAGE TIME/CURRENT CURVES

Cat. No. ERN (Amp) 250V



Cat. No. ERS (Amp) 600V





Catalog Number ERN (1 - 600A) 250 Volts AC or Less
Catalog Number ERS (1 - 600A) 600 Volts AC or Less

AMPERE RATINGS					
ERN 250V					
1	12	40	90	200	450
3	15	45	100	225	500
5	20	50	110	250	600
6	25	60	125	300	—
7	30	70	150	350	—
10	35	80	175	400	—
ERS 600V					
1	7	25	60	150	350
2	8	30	70	175	400
3	10	35	80	200	450
4	12	40	90	225	500
5	15	45	100	250	600
6	20	50	125	300	—

ERN/ERS SPECIFICATIONS

"Renewable", Non Time-Delay

Voltage Rating: ERN - 250VAC, ERS - 600VAC

Ampere Rating: 1 - 600 Amps

Interrupting Rating: 10,000 RMS Symmetrical Amps

Agency Approvals:

ERN (1-60A), (201-600A); ERS (1-100A), (201-600A)
UL Listed, Class H, UL248-6, File E162363
CSA Certified HRC-H per C22.22, No. 248.6, LR700489

BENEFITS:

- Economical, for general purpose use.
- Time lag design sustains overloads better than other Class H fuses.

APPLICATIONS:

- Circuits having relatively low levels of available short circuit current.
- Industrial and commercial applications having frequent outages where a renewable type fuse is desired.
- For motor applications, refer to EDISON ECNR/ECNR.

RECOMMENDED FUSEBLOCKS:

Refer to page 135 in this catalog.

RECOMMENDED UPGRADE:

ECNR/ECNR or LENRK/LESRK.

CROSS REFERENCE				
VOLTS	EDISON	BUSSMANN	GOULD	LITTELFUSE
250	ERN	REN	OT	RLN
600	ERS	RES	OTS	RLS

REPLACEMENT LINKS FOR RENEWABLE TYPE FUSES

Catalog Number ELNE (Amp) 250 Volts for ERN Fuses
Catalog Number ELS (Amp) 600 Volts for ERS Fuses

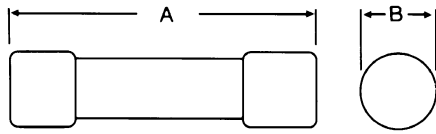
AMPERE RATINGS
Refer to respective table above.

CROSS REFERENCE				
VOLTS	EDISON	BUSSMANN	GOULD	LITTELFUSE
250	ELNE	LKN	RL	LKN
600	ELS	LKS	RLS	LKS

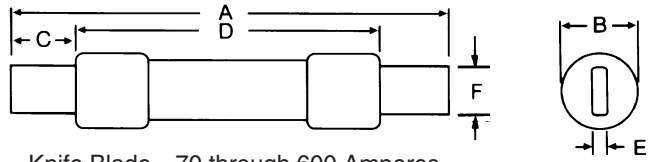


ELNE CLASS H RENEWABLE FUSE LINKS
ELS CLASS H RENEWABLE FUSE LINKS

DIMENSIONS



Ferrule Design—1 through 60 Amperes

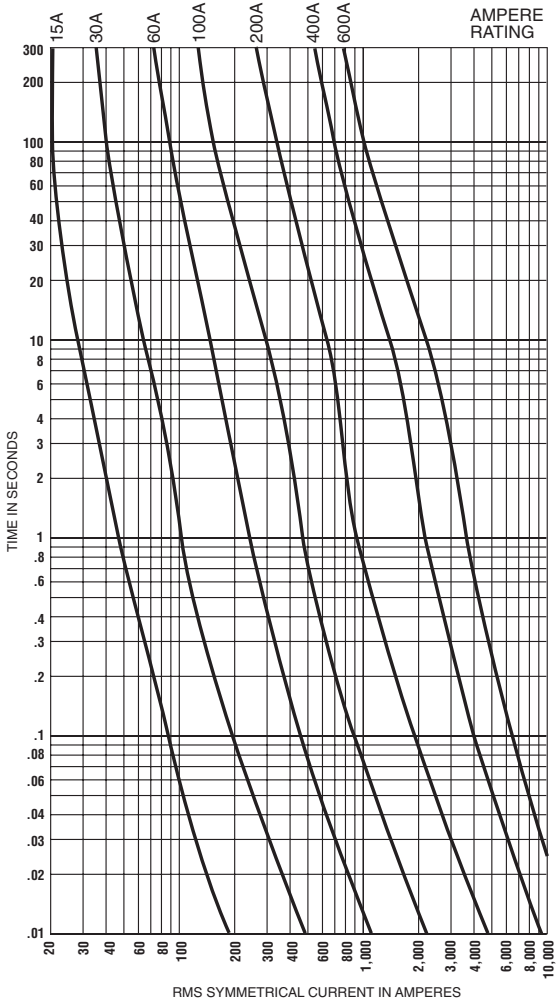


Knife Blade—70 through 600 Amperes

Volts and Catalog Number	Amps	Overall	Max. Diameter	Min. Blade Length	Min. Barrel Length	Blade Thickness	Blade Width
		A	B	C	D	E	F
ERN 250 VAC	1-30	2	9/16	-	-	-	-
	35-60	3	13/16	-	-	-	-
	70-100	5-7/8	-	1	-	1/8	3/4
	110-200	7-1/8	-	1-3/8	4-1/8	3/16	1-1/8
	225-400	8-5/8	-	1-7/8	4-5/8	1/4	1-5/8
ERS 600 VAC	450-600	10-3/8	-	2-1/4	5-3/16	1/4	2
	1-30	5	13/16	-	-	-	-
	35-60	5-1/2	1-1/16	-	-	-	-
	70-100	7-7/8	-	1	-	1/8	3/4
	110-200	9-5/8	-	1-3/8	6-1/8	3/16	1-1/8
450-600	225-400	11-5/8	-	1-7/8	7-1/8	1/4	1-5/8
	450-600	13-3/8	-	2-1/4	8-3/16	1/4	2

AVERAGE TIME/CURRENT CURVES

Cat. No. ERN (Amp) 250V



Cat. No. ERS (Amp) 600V

