

# Portable GFCI Cable Assemblies

## Applications:

Portable GFCI Cable Assemblies allow for:

- Non-hazardous equipment connections with hazardous receptacles\*
- Earth leakage protection when operating equipment such as drills, saws, grinders, and hand lamps

Typically used during plant turnarounds in installations such as:

- Refineries
- Chemical plants
- LNG facilities

## Features:

- Increased safety - earth leakage protection provides assurance that personnel and equipment are protected from ground fault hazards when performing maintenance
- Increased reliability - construction meets Eaton's Crouse-Hinds' superior quality standards
- Increased time savings - turn-key solution eliminates need for hazardous plug installed on non-hazardous equipment
- Increased flexibility - available with a variety of plug options to mate with a range of installed base of Eaton's Crouse-Hinds receptacles
- Consult factory for customizable options, including:
  - Cable Color (i.e. black)
  - Connector Type (i.e. twist lock)
  - Cable Length (i.e. 3 ft.)

## Certifications and Complies:

- GFCI Compliances: UL/cUL 943 Listed
- Plug Compliances: UL and CSA Listed Plug (consult Plug catalog pages for details)



## Ordering Information:

Plug Style	Plug Pin Configuration	Plug Ratings	Ground Trip Current	Cord Length	Cord Gauge	Cat. #
ENP5201	NEMA 5-20	20 Amp 125 Volt	4-6 mA	2'	12/3 AWG	<b>ENP5201 GFI</b>
ENP5151	NEMA 5-20	15 Amp 125 Volt	4-6 mA	2'	12/3 AWG	<b>ENP5151 GFI</b>
CPP516	UL1686 2W3P	20 Amp 125 Volt	4-6 mA	2'	12/3 AWG	<b>CPP516 GFI</b>
CPP516	UL1686 2W3P	20 Amp 240 Volt	4-6 mA	2'	12/3 AWG	<b>CPP516 GFI 240V</b>

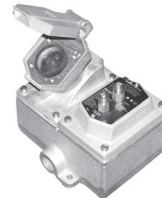
Portable GFCI Cable Assemblies mate with a variety of our industry-leading receptacle solutions:



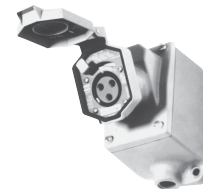
**ENR Receptacle**  
see page 1350



**ENC Connector**  
see pages 1355-1356



**ENR-GFCI Kit**  
see pages 1357-1358



**CPS Receptacle**  
see pages 1344-1346

\*For use only in non-hazardous atmospheres (i.e. plant turnarounds).

# Portable GFCI Cable Assemblies

## Applications:

Portable GFCI Cable Assemblies allow for:

- Non-hazardous equipment connections with hazardous receptacles\*
- Earth leakage protection when operating equipment such as drills, saws, grinders, and hand lamps

Typically used during plant turnarounds in installations such as:

- Refineries
- Chemical plants
- LNG facilities

## Features:

- Increased safety - earth leakage protection provides assurance that personnel and equipment are protected from ground fault hazards when performing maintenance
- Increased reliability - construction meets Eaton's Crouse-Hinds' superior quality standards
- Increased time savings - turn-key solution eliminates need for hazardous plug installed on non-hazardous equipment
- Increased flexibility - available with a variety of plug options to mate with a range of installed base of Eaton's Crouse-Hinds receptacles
- Consult factory for customizable options, including:
  - Cable Color (i.e. black)
  - Connector Type (i.e. twist lock)
  - Cable Length (i.e. 3 ft.)

## Certifications and Complies:

- GFCI Compliances: UL/cUL 943 Listed
- Plug Compliances: UL and CSA Listed Plug (consult Plug catalog pages for details)



## Ordering Information:

Plug Style	Plug Pin Configuration	Plug Ratings	Ground Trip Current	Cord Length	Cord Gauge	Cat. #
ENP5201	NEMA 5-20	20 Amp 125 Volt	4-6 mA	2'	12/3 AWG	<b>ENP5201 GFI</b>
ENP5151	NEMA 5-20	15 Amp 125 Volt	4-6 mA	2'	12/3 AWG	<b>ENP5151 GFI</b>
CPP516	UL1686 2W3P	20 Amp 125 Volt	4-6 mA	2'	12/3 AWG	<b>CPP516 GFI</b>
CPP516	UL1686 2W3P	20 Amp 240 Volt	4-6 mA	2'	12/3 AWG	<b>CPP516 GFI 240V</b>

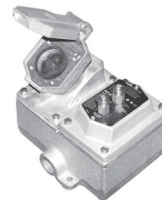
Portable GFCI Cable Assemblies mate with a variety of our industry-leading receptacle solutions:



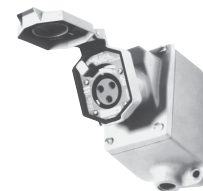
**ENR Receptacle**  
see page 1350



**ENC Connector**  
see pages 1355-1356



**ENR-GFCI Kit**  
see pages 1357-1358



**CPS Receptacle**  
see pages 1344-1346

\*For use only in non-hazardous atmospheres (i.e. plant turnarounds).