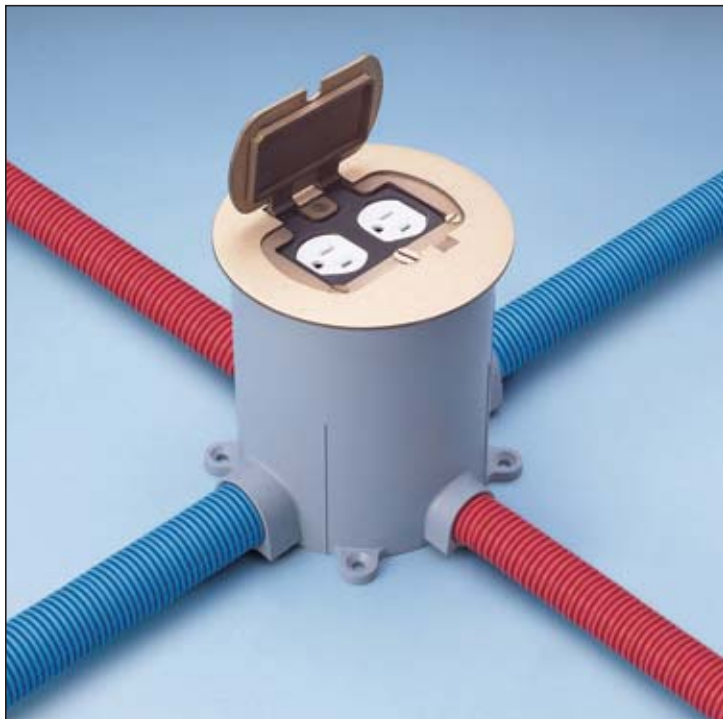


Round Floor Boxes

Round Floor Box System

Features

- Nonmetallic PVC construction, watertight gasket and corrosion-resistant hardware assure long life and reliable performance even in harsh and/or corrosive environments
- Covers are available for a variety of applications
- The same box depth simplifies ordering and reduces inventory
- For carpet and tile applications
- Cover options include: Brass, Stainless Steel and Nonmetallic (Ivory, Caramel, Taupe, Slate and Brown)
- Concrete tight and suitable for any on-grade/below grade application; concrete or wood floor construction approved
- Y-connector (E972Y) allows you to feed parallel runs of 3/4 in. conduit or to feed in/out from the same side for increased wiring and faster installation
- PVC molded hubs and reducer plugs included
- Accepts 1/2 in., 3/4 in. and 1 in. conduit, tubing or raceway
- UL scrub-water tested, approved for all types of finished flooring



Three-way versatility for power, data and communications

Carlton® Round Floor Boxes give you the same cost-saving advantages over metal boxes as our rectangular boxes. By letting you combine power, data and communications in the same box, you can dramatically reduce your installation time and cost compared to other nonmetallic boxes.

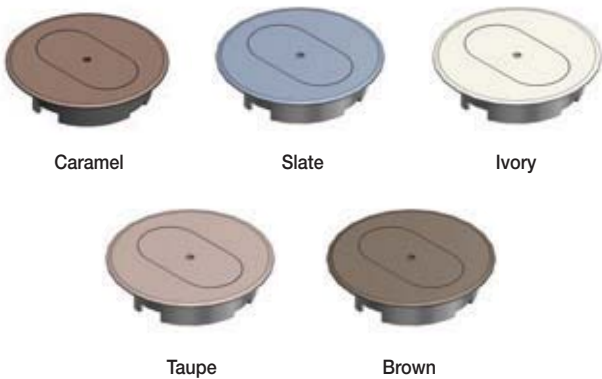
In addition, multi-use covers mean fewer SKUs to deal with and greater jobsite flexibility to increase your savings further. Take a closer look at all the advantages for yourself.

Round Floor Boxes

Nonmetallic Covers



- High impact-resistant thermoplastic
- Compatible with standard NEMA Duplex and 1-1/4 in. N.P.S. receptacles
- Drill points (3/8 in.) provided for low-voltage cable pass throughs
- 1-1/4 in. N.P.S. plugs may be modified to accept smaller fittings (3/8 in., 1/2 in. and 3/4 in.)
- **For carpet and tile applications**
- Scrub-water tested
- Approved for all types of finished flooring



Duplex Covers



Cat. No.	Colour	Std. Ctn. Qty.	Std. Ctn. Wt. (lb.)
E97DSI	Ivory	10	5.2
E97DSC	Caramel		5.7
E97DST	Taupe		5.7
E97DSS	Slate		5.6
E97DSB	Brown		5.8

1-1/4 in. N.P.S. Covers



Cat. No.	Colour	Std. Ctn. Qty.	Std. Ctn. Wt. (lb.)
E97SSRB	Brown	10	3.8
E97SSRC	Caramel		
E97SSRS	Slate		

Clear Cover Carpet Ring



Cat. No.	Colour	Std. Ctn. Qty.	Std. Ctn. Wt. (lb.)
E97CCR*	Clear	10	1.2

*Not CSA applicable

Round Floor Boxes

Features

- Screws concealed under doors
- Rugged construction
- Coated with a light lacquer finish for extra protection
- Resistance to wear – suited for high traffic areas
- Gasketed for watertight applications
- Available in four styles – Single Door, Two Door, N.P.S. opening and Two Door Dual Service
- **For carpet and tile applications**
- Scrub-water tested

NOTE: Carlton® metal cover adapter ring (E97ABR2) is required with these covers (sold separately)



Two Door Dual Service

(Divider Kit included)



Cat. No.	Material	Devices	Std. Ctn. Qty.	Std. Ctn. Wt. (lb.)
E97BR2D	Brass	Duplex and two Data Ports	5	9.2
E97SS2D	Stainless Steel			

Two Door



Cat. No.	Material	Devices	Std. Ctn. Qty.	Std. Ctn. Wt. (lb.)
E97BR2	Brass	Duplex	5	7
E97SS2	Stainless Steel			7.7

Single Door



Cat. No.	Material	Devices	Std. Ctn. Qty.	Std. Ctn. Wt. (lb.)
E97BR	Brass	GFCI and Duplex	5	7
E97SS	Stainless Steel			7.9

N.P.S. Opening



Cat. No.	Material	Devices	Std. Ctn. Qty.	Std. Ctn. Wt. (lb.)
E97BRG	Brass	1-1/4 in. Outlet and Single Receptacle	5	7.5
E97SSG	Stainless Steel			8.1

Metal Cover Adapter Ring



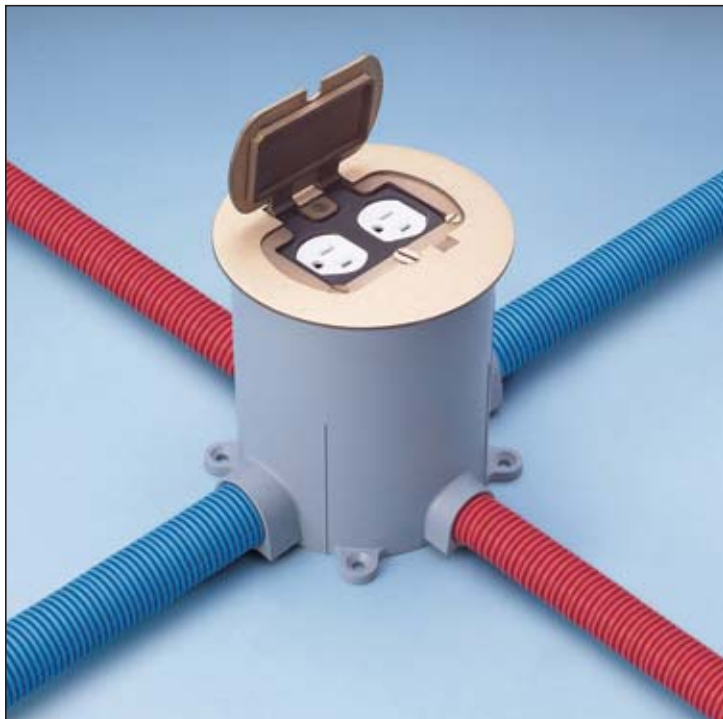
Cat. No.	Description	Std. Ctn. Qty.	Std. Ctn. Wt. (lb.)
E97ABR2	One-Piece Metal Cover Adapter	10	3.3

Round Floor Boxes

Round Floor Box System

Features

- Nonmetallic PVC construction, watertight gasket and corrosion-resistant hardware assure long life and reliable performance even in harsh and/or corrosive environments
- Covers are available for a variety of applications
- The same box depth simplifies ordering and reduces inventory
- For carpet and tile applications
- Cover options include: Brass, Stainless Steel and Nonmetallic (Ivory, Caramel, Taupe, Slate and Brown)
- Concrete tight and suitable for any on-grade/below grade application; concrete or wood floor construction approved
- Y-connector (E972Y) allows you to feed parallel runs of 3/4 in. conduit or to feed in/out from the same side for increased wiring and faster installation
- PVC molded hubs and reducer plugs included
- Accepts 1/2 in., 3/4 in. and 1 in. conduit, tubing or raceway
- UL scrub-water tested, approved for all types of finished flooring



Three-way versatility for power, data and communications

Carlton® Round Floor Boxes give you the same cost-saving advantages over metal boxes as our rectangular boxes. By letting you combine power, data and communications in the same box, you can dramatically reduce your installation time and cost compared to other nonmetallic boxes.

In addition, multi-use covers mean fewer SKUs to deal with and greater jobsite flexibility to increase your savings further. Take a closer look at all the advantages for yourself.

Round Floor Boxes

Nonmetallic Covers



- High impact-resistant thermoplastic
- Compatible with standard NEMA Duplex and 1-1/4 in. N.P.S. receptacles
- Drill points (3/8 in.) provided for low-voltage cable pass throughs
- 1-1/4 in. N.P.S. plugs may be modified to accept smaller fittings (3/8 in., 1/2 in. and 3/4 in.)
- **For carpet and tile applications**
- Scrub-water tested
- Approved for all types of finished flooring



Duplex Covers



Cat. No.	Colour	Std. Ctn. Qty.	Std. Ctn. Wt. (lb.)
E97DSI	Ivory	10	5.2
E97DSC	Caramel		5.7
E97DST	Taupe		5.7
E97DSS	Slate		5.6
E97DSB	Brown		5.8

1-1/4 in. N.P.S. Covers



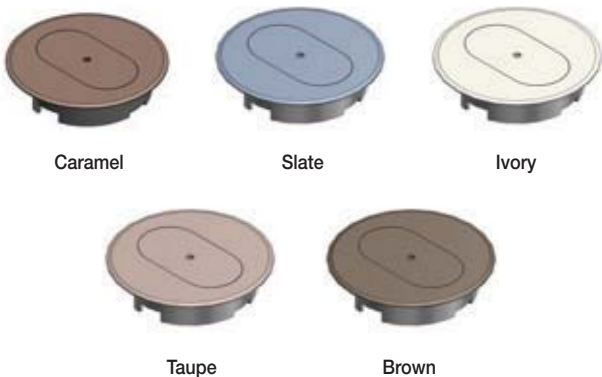
Cat. No.	Colour	Std. Ctn. Qty.	Std. Ctn. Wt. (lb.)
E97SSRB	Brown	10	3.8
E97SSRC	Caramel		
E97SSRS	Slate		

Clear Cover Carpet Ring



Cat. No.	Colour	Std. Ctn. Qty.	Std. Ctn. Wt. (lb.)
E97CCR*	Clear	10	1.2

*Not CSA applicable



Round Floor Boxes

Features

- Screws concealed under doors
- Rugged construction
- Coated with a light lacquer finish for extra protection
- Resistance to wear – suited for high traffic areas
- Gasketed for watertight applications
- Available in four styles – Single Door, Two Door, N.P.S. opening and Two Door Dual Service
- **For carpet and tile applications**
- Scrub-water tested

NOTE: Carlton® metal cover adapter ring (E97ABR2) is required with these covers (sold separately)



Two Door Dual Service

(Divider Kit included)



Cat. No.	Material	Devices	Std. Ctn. Qty.	Std. Ctn. Wt. (lb.)
E97BR2D	Brass	Duplex and two Data Ports	5	9.2
E97SS2D	Stainless Steel			

Two Door



Cat. No.	Material	Devices	Std. Ctn. Qty.	Std. Ctn. Wt. (lb.)
E97BR2	Brass	Duplex	5	7
E97SS2	Stainless Steel			7.7

Single Door



Cat. No.	Material	Devices	Std. Ctn. Qty.	Std. Ctn. Wt. (lb.)
E97BR	Brass	GFCI and Duplex	5	7
E97SS	Stainless Steel			7.9

N.P.S. Opening



Cat. No.	Material	Devices	Std. Ctn. Qty.	Std. Ctn. Wt. (lb.)
E97BRG	Brass	1-1/4 in. Outlet and Single Receptacle	5	7.5
E97SSG	Stainless Steel			8.1

Metal Cover Adapter Ring



Cat. No.	Description	Std. Ctn. Qty.	Std. Ctn. Wt. (lb.)
E97ABR2	One-Piece Metal Cover Adapter	10	3.3