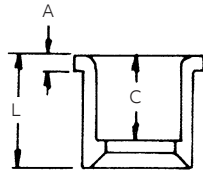


Conduit bodies and fittings

For use with Schedule 40 and 80 conduit



For connecting different sizes of conduit. Bell x Spigot.



UL LISTED
E23018
Except where noted by ▶

Reducer bushings

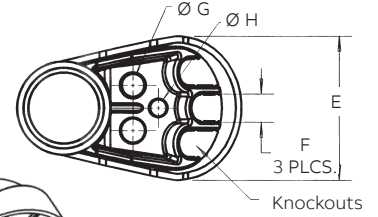
Cat. No.	Size (in.)	Std. Ctn.	L (in.) Typical	A (in.) Typical	C (in.) Typical
E950ED	3/4 x 1/2	100	1 ⁵ / ₃₂	1 ³ / ₆₄	1 ¹ / ₃₂
E950FD-CAR	1 x 1/2	25	1 ¹¹ / ₃₂	3/16	57/64
E950FE	1 x 3/4	100	1 ¹¹ / ₃₂	3/16	1 ¹ / ₆₄
E950GE-CAR	1 ¹ / ₄ x 3/4	10	1 ¹⁵ / ₃₂	3/16	1 ¹ / ₆₄
E950GF	1 ¹ / ₄ x 1	50	1 ¹⁵ / ₃₂	3/16	1 ⁹ / ₆₄
E950HF-CAR	1 ¹ / ₂ x 1	10	1 ¹⁹ / ₃₂	3/16	1 ⁹ / ₆₄
E950HG-CAR	1 ¹ / ₂ x 1 ¹ / ₄	10	1 ¹⁹ / ₃₂	3/16	1 ¹⁷ / ₆₄
E950JG-CAR	2 x 1 ¹ / ₄	10	1 ³ / ₄	7/32	1 ¹⁷ / ₆₄
E950JH-CAR	2 x 1 ¹ / ₂	10	1 ³ / ₄	7/32	1 ²⁵ / ₆₄
E950KJ-CAR	2 ¹ / ₂ x 2	10	2 ⁵ / ₃₂	3/8	1 ²⁷ / ₆₄
E950LJ-CAR	3 x 2	10	2 ¹ / ₈	1/4	1 ⁷ / ₈
▶ E950LK	3 x 2 ¹ / ₂	25	1 ¹⁵ / ₁₆	1/4	1 ¹¹ / ₁₆
E950NL	4 x 3	25	2 ³ / ₄	5/16	1 ¹⁵ / ₁₆



UL LISTED
E23018
Except where noted by ▶

Fabricated reducers

Cat. No.	Size (in.)	Std. Ctn.	Std. Wt. (lbs.)
Male x male			
▶ E952JH	1 ¹ / ₂ x 2	48	20
▶ E952KJ	2 ¹ / ₂ x 2	48	26
▶ E952LJ	3 x 2	36	21
▶ E952LK	3 x 2 ¹ / ₂	36	32
▶ E952NL	4 x 3	15	21
▶ E952NM	4 x 3 ¹ / ₂	15	25
▶ E952PN	5 x 4	12	27
▶ E952RP	6 x 5	10	31
Male x female			
▶ E952NJF	4 x 2	15	16
▶ E952RNF	6 x 4	10	28



UL LISTED
E13938

Service entrance caps (Vertical applications only)

Cat. No.	Size (in.)	Std. Ctn.	Dimensions (in.)			
			E	F	G	H
E998D	1/2	5	1.76	.45	.45	-
E998E	3/4	20	1.76	.45	.45	-
E998E-CAR	3/4	5	1.76	.45	.45	-
E998F	1	15	2.26	.59	.58	-
E998F-CAR	1	5	2.26	.59	.58	-
E998G-CAR	1 ¹ / ₄	5	3.52	.74	.71	.50
E998H-CAR	1 ¹ / ₂	5	3.52	.74	.71	.50
E998J-CAR	2	5	4.26	.83	.78	.56
E998K-UPC	2 ¹ / ₂	2	7.47	1.70	1.31	1.00
E998L	3	2	7.47	1.70	1.31	1.00
E998N	4	2	10.45	2.25	1.88	1.31

End caps

Cat. No.	Size (in.)	Std. Ctn.	Std. Wt. (lbs.)
▶ E958D	1/2	100	3
▶ E958E	3/4	100	4
▶ E958F	1	75	5
▶ E958G	1 ¹ / ₄	40	4
▶ E958H	1 ¹ / ₂	30	4
▶ E958J	2	25	5
▶ E958K	2 ¹ / ₂	10	4
▶ E958L	3	10	5
▶ E958N	4	5	17
▶ E958P	5	5	11
▶ E958R	6	5	13

UL LISTED
E23018
Except where noted by ▶

PVC riser caps

Cat. No.	Size (in.)	Std. Ctn.	Std. Wt. (lbs.)
▶ E935J	2	25	3
▶ E935L	3	25	5
▶ E935N	4	25	7
▶ E935P	5	25	35
▶ E935R	6	10	7

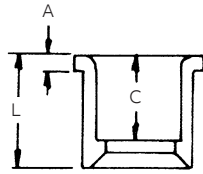


Conduit bodies and fittings

For use with Schedule 40 and 80 conduit



For connecting different sizes of conduit. Bell x Spigot.



UL LISTED
E23018
Except where noted by ▶

Reducer bushings

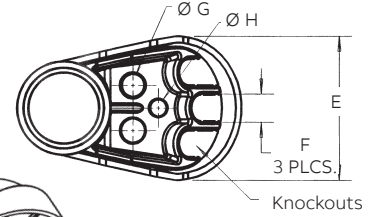
Cat. No.	Size (in.)	Std. Ctn.	L (in.) Typical	A (in.) Typical	C (in.) Typical
E950ED	3/4 x 1/2	100	1 ⁵ / ₃₂	1 ³ / ₆₄	1 ¹ / ₃₂
E950FD-CAR	1 x 1/2	25	1 ¹¹ / ₃₂	3/16	57/64
E950FE	1 x 3/4	100	1 ¹¹ / ₃₂	3/16	1 ¹ / ₆₄
E950GE-CAR	1 ¹ / ₄ x 3/4	10	1 ¹⁵ / ₃₂	3/16	1 ¹ / ₆₄
E950GF	1 ¹ / ₄ x 1	50	1 ¹⁵ / ₃₂	3/16	1 ⁹ / ₆₄
E950HF-CAR	1 ¹ / ₂ x 1	10	1 ¹⁹ / ₃₂	3/16	1 ⁹ / ₆₄
E950HG-CAR	1 ¹ / ₂ x 1 ¹ / ₄	10	1 ¹⁹ / ₃₂	3/16	1 ¹⁷ / ₆₄
E950JG-CAR	2 x 1 ¹ / ₄	10	1 ³ / ₄	7/32	1 ¹⁷ / ₆₄
E950JH-CAR	2 x 1 ¹ / ₂	10	1 ³ / ₄	7/32	1 ²⁵ / ₆₄
E950KJ-CAR	2 ¹ / ₂ x 2	10	2 ⁵ / ₃₂	3/8	1 ²⁷ / ₆₄
E950LJ-CAR	3 x 2	10	2 ¹ / ₈	1/4	1 ⁷ / ₈
▶ E950LK	3 x 2 ¹ / ₂	25	1 ¹⁵ / ₁₆	1/4	1 ¹¹ / ₁₆
E950NL	4 x 3	25	2 ³ / ₄	5/16	1 ¹⁵ / ₁₆



UL LISTED
E23018
Except where noted by ▶

Fabricated reducers

Cat. No.	Size (in.)	Std. Ctn.	Std. Wt. (lbs.)
Male x male			
▶ E952JH	1 ¹ / ₂ x 2	48	20
▶ E952KJ	2 ¹ / ₂ x 2	48	26
▶ E952LJ	3 x 2	36	21
▶ E952LK	3 x 2 ¹ / ₂	36	32
▶ E952NL	4 x 3	15	21
▶ E952NM	4 x 3 ¹ / ₂	15	25
▶ E952PN	5 x 4	12	27
▶ E952RP	6 x 5	10	31
Male x female			
▶ E952NJF	4 x 2	15	16
▶ E952RNF	6 x 4	10	28



UL LISTED
E13938

Service entrance caps (Vertical applications only)

Cat. No.	Size (in.)	Std. Ctn.	Dimensions (in.)			
			E	F	G	H
E998D	1/2	5	1.76	.45	.45	-
E998E	3/4	20	1.76	.45	.45	-
E998E-CAR	3/4	5	1.76	.45	.45	-
E998F	1	15	2.26	.59	.58	-
E998F-CAR	1	5	2.26	.59	.58	-
E998G-CAR	1 ¹ / ₄	5	3.52	.74	.71	.50
E998H-CAR	1 ¹ / ₂	5	3.52	.74	.71	.50
E998J-CAR	2	5	4.26	.83	.78	.56
E998K-UPC	2 ¹ / ₂	2	7.47	1.70	1.31	1.00
E998L	3	2	7.47	1.70	1.31	1.00
E998N	4	2	10.45	2.25	1.88	1.31

End caps

Cat. No.	Size (in.)	Std. Ctn.	Std. Wt. (lbs.)
▶ E958D	1/2	100	3
▶ E958E	3/4	100	4
▶ E958F	1	75	5
▶ E958G	1 ¹ / ₄	40	4
▶ E958H	1 ¹ / ₂	30	4
▶ E958J	2	25	5
▶ E958K	2 ¹ / ₂	10	4
▶ E958L	3	10	5
▶ E958N	4	5	17
▶ E958P	5	5	11
▶ E958R	6	5	13

UL LISTED
E23018
Except where noted by ▶

PVC riser caps

Cat. No.	Size (in.)	Std. Ctn.	Std. Wt. (lbs.)
▶ E935J	2	25	3
▶ E935L	3	25	5
▶ E935N	4	25	7
▶ E935P	5	25	35
▶ E935R	6	10	7

