

Lighting Solutions
Recessed downlighting products

HALO



EATON

Powering Business Worldwide



For over 60 years, Halo has been the industry leader in recessed and track lighting providing innovative and contractor-friendly lighting products. State-of-the-art engineering, on-going research and development, meticulous product standards, and a tradition of unparalleled service makes Halo the brand builders know and trust.



Small cardboard squares were set on a conveyor system and when an order came in for a new Halo recessed lighting product four or five people would pitch in and assemble the products. Total employee count at Halo's beginning was three people in the office and seven in the plant located in a 3,000 square ft. building in Chicago.



Saving you time, money, and energy.

SLD

4" and 6" surface LED downlight

Halo Surface LED Downlight (SLD) incorporates WaveStream™ technology to create an ultra-low profile 4" and 6" surface mounting luminaire with the performance and look of a traditional downlight. SLD is designed for installation in many square, octagon, or round junction boxes. Supply wire adapter with LED quick wiring connector included. Suitable for residential or commercial installations. Ideal for closets, storage areas, attics and basements; and may be used in 4", 5" and 6" recessed downlights. The included retrofit kit's dedicated LED wiring connector meets high efficacy code requirements.



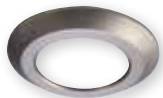


SLD4



SLD6

Designer trims (order separately)



**SLD4TRMSN
SLD6TRMSN**
satin nickel



**SLD4TRMTBZ
SLD6TRMTBZ**
tuscan bronze



**SLD4TRMWH
SLD6TRMWH**
white (paintable)

Junction box accessories (order separately)



SLD4EXT
4" Surface LED spacer ring



SLD4RAD
4" SLD round surface j-box adapter



SLD6EXT
6" Surface LED spacer ring



SLD6RAD
6" SLD round surface j-box adapter



SLD6SADPLT
6" SLD square surface adapter plate



RL

4" and 5"/6" LED retrofit downlight

The Halo RL LED is a complete 4" and 5"/6" LED baffle-trim module for recessed downlights. The RL is designed for use in new construction, remodel, and retrofit installation in Halo and other compatible 4", 5" and 6" recessed downlight housings. The integral LED driver offers 120 volt dimming capability. RL56 is offered in 600 lumen and 900 lumen series. The RL is available in RL4, RL56-600 lumen series and RL56-900 lumen series. RL models in 80 CRI and 90 CRI are offered in 2700K, 3000K, 3500K, and 4000K. Optional accessories include designer trims in white (paintable), satin nickel, and tuscan bronze.





RL4

Designer trims (order separately)



**RL4TRMSN
RL56TRMSN**
satin nickel



**RL4TRMTBZ
RL56TRMTBZ**
tuscan bronze



**RL4TRMWH
RL56TRMWH**
white (paintable)



RL56 - 600 Series



RL56 - 900 Series



RA

4" and 5"/6" LED retrofit adjustable gimbal

The Halo RA LED is a complete 4" and 5"/6" adjustable gimbal LED module; suitable for new construction, remodel, and retrofit installation in Halo and other compatible 4", 5" and 6" recessed downlight housings. The RA adjustable gimbal offers 35-degree tilt and up to 360-degree rotation. The integral LED driver offers 120 volt dimming capability. The RA4 and RA56 adjustable gimbals are offered with 90 CRI in 2700K, 3000K, 3500K and 4000K; and with beam spread options in Very Wide Flood (VWFL) and Narrow Flood (NFL) models.



Narrow Flood (NFL)

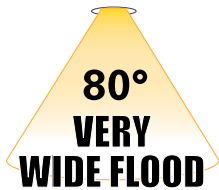


RA4069xxNFLWH



RA56069xxNFLWH

Very Wide Flood (VWFL)



RA4069xxWH



RA56069xxWH



LT

4" and 5"/6" LED retrofit baffle trim kit

The Halo LT combines the energy savings, long life and sustainability of LED in an easy to install retrofit baffle trim kit. The LT is designed for use in new construction, remodel, and retrofit installation in Halo and other compatible 4", 5" and 6" recessed downlight housings. The diffuse lens provides shielding to the source and wet location listing; suitable for use in showers or in outdoor covered ceiling applications. Also conforms with NFPA requirements for closet use. Integral driver provides 120 volt phase cut dimming, an inline connector provides power using a medium base socket adapter provided or connect directly to the mating connector in the LED housings. Ships with a gasket and makes any housing airtight for added energy savings and code compliance.

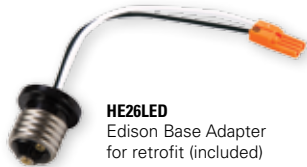




LT4



LT56



HE26LED
Edison Base Adapter
for retrofit (included)



ML56

LED downlighting system

The Halo ML56 LED downlight collection is comprised of LED modules with 5" and 6" trims. ML56 LED modules are offered in three lumen packages across the 600, 900, and 1200 series - a versatile collection of energy-efficient LED downlights for general lighting in commercial and residential applications. The Halo ML56 LED 600, 900, 1200 series modules are for either new construction or retrofitting existing 5" and 6" compatible housings (Edison screw base adapter included). Halo LED ML56 collection features excellent color (80 CRI or 90 CRI) and offers a wide selection of color temperatures (2700K, 3000K, 3500K, and 4000K). Halo LED is ENERGY STAR® Certified and can be used for California Title 24 (90 CRI is Title 20 certified for residential compliance) and IECC High Efficacy compliance with designated LED modules and LED trims.





HALO Housing

HALO ML56 LED Light Module (600 or 900 Series)

HALO ML56 LED Light Module (1200 Series)

OR

optional NFL lens[†] (1200 Series)

HALO ML56 LED Trim

*E26 Edison Screw Base Adapter (included for retrofit of non-LED housings).
[†]Optional accessory for the ML56-1200 series.

ML56 LED Modules

600 or 900 Series



1200 Series



1200 Series Accessories



standard diffusing lens (included)



BFR56NFL[†]
 narrow flood lens (NFL)



BFR56MH[†]
 media holder (requires BFR56NFL & L345SF, ordered separately)

L345SF
 soft focus lens (requires BFR56NFL & BFR56MH, ordered separately)



ML56 5" trims

592

reflector



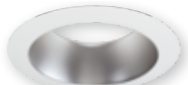
592W

white



592SC

specular clear



592H

haze

593

baffle



593WB

white baffle and trim



593BB

black baffle, white trim



593SN

satin nickel baffle and trim



593TBZ

tuscan bronze baffle and trim

596

baffle



596WB

white baffle and trim

591 non-conductive
"dead front" baffle



591WB

white baffle and trim
(for 600 Series module only)

594

semi-regressed eyeball



594WB

white



594SN

white



594TBZ

white

595

wall wash



595WW

white

5" oversize trim ring



TRM590WH

white

ML56 6" trims

692
reflector



692W
white



692SC
specular clear



692H
haze

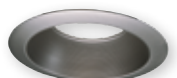
693
baffle



693WB
white baffle and trim



693BB
black baffle, white trim



693SN
satin nickel baffle and trim



693TBZ
tuscan bronze baffle and trim

696
baffle



696WB
white baffle and trim

691 non-conductive
"dead front" baffle



691WB
white baffle and trim
(for 600 Series module only)

694
semi-regressed eyeball



694WB
white



694SN
white



694TBZ
white

695
wall wash



695WW
white

6" oversize trim ring



TRM690WH
white

H4 LED downlight system

Halo H4 LED downlight collection is a three-part system that consists of a 4" downlight housing, light engine module, and trim to be installed according to the pace of the project. The H4 collection is offered in 90 CRI, R9 > 50, with four LED light engines, accepts 16 different trims including reflector, baffle and lensed. Adjustable gimbal light engines feature aiming up to 35° tilt, and interchangeable reflector in 25°, 35°, and 55° beam. Housings are offered in Insulated Ceiling (IC) and Non-Insulated Ceiling (Non-IC), both in Air-Tite™ models that include dimmable LED drivers. H4 LED is ENERGY STAR® certified and can be used for California Title 24 (Title 20 Certified), and IECC High Efficacy compliance with designated LED modules and LED trims. Halo 4" LED downlights save energy, without sacrificing performance.



H4 adjustable gimbal and light engine

Round and square gimbal styles with interchangeable beam reflectors



ELG4069xx WH/SN/TBZ
round adjustable LED light engine



ELSG4069xx WH/SN/TBZ
square adjustable LED light engine

xx - 27=2700K, 30=3000K, 35=3500K, 40=4000K
WH=White, **SN**=Satin Nickel, **TBZ**=Tuscan Bronze

TL412RK

gimbal reflector kit (optional)



25° Reflector
(Included)



35° Flood
Reflector



50° Wide
Flood Reflector

Compatible LED housings

- H457ICAT1E** - ICAT new construction, 120V
- H457RICAT1E** - ICAT remodel, 120V
- H457TATE010** - Non-IC new construction, UNV
- H457TCPE010** - Non-IC new construction, chicago plenum, UNV
- H457RTATE010** - Non-IC remodel, UNV

Available finishes



WH
White



SN
satin nickel



TBZ
tuscan bronze



H4 light engine and trims



EL4069xx
LED light engine
(interchangeable trim options)

xx - **27**=2700K, **30**=3000K, **35**=3500K, **40**=4000K

Compatible LED housings

H457ICAT1E - ICAT new construction, 120V

H457RICAT1E - ICAT remodel, 120V

H457TATE010 - Non-IC new construction, UNV

H457TCPE010 - Non-IC new construction,
chicago plenum, UNV

H457RTATE010 - Non-IC remodel, UNV

TL408
square downlight baffle



TL408WHWB
white baffle and trim with Solite® lens



TL408WHBB
black baffle, white trim with Solite® lens



TL408SNBB
black baffle, satin nickel trim with Solite® lens



TL408TBZBB
black baffle, tuscan bronze trim with Solite® lens

TL410
deep regressed dome lens reflector



TL410WH
white reflector and trim



TL410SBK
specular black reflector, white trim



TL410SC
specular clear reflector, white trim



TL410H
haze reflector, white trim



TL410SN
satin nickel reflector and trim



TL410TBZ
tuscan bronze reflector and trim

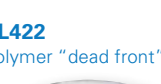
TL411
deep regressed dome lens baffle



TL411WB
white baffle and trim



TL411BB
black baffle, white trim



TL422
polymer "dead front" shower trim



TL422PS
white polymer baffle and ring with
prismatic clear polymer lens

TL402

Solite® regressed flat lens reflector



TL402WHS
white reflector and trim



TL402SBKS
specular black reflector, white trim



TL402SCS
specular clear reflector, white trim



TL402HS
haze reflector, white trim



TL402SN
satin nickel reflector and trim



TL402TBZ
tuscan bronze reflector and trim

TL402

Solite® regressed flat lens baffle



TL403WB
white baffle and trim



TL403BB
black baffle, white trim

TL409

wall wash



TL409WW
semi-specular reflector with wall wash
optic, diffusing lens, white trim



TL409WHWW
white reflector with wall wash optic,
diffusing lens, white trim



HL6

ALLSLOPE LED recessed lighting

Featuring unique interchangeable beam-forming optics, full range dimming, multiple color temperatures and trim options, the Halo HL6 AllSlope LED 6" downlight system is specifically designed for slope ceilings with pitch aiming from 2/12 (10 degrees) to 12/12 (45 degrees). The innovative design allows the LED light engine full adjustment capability so it can be aimed straight down in accordance with the ceiling pitch, resulting in outstanding performance and appearance. The three piece system consists of a 6-inch aperture housing, available in 1200 lumen series or 1800 lumen series; LED light engines are offered with 90 CRI (R9>50) in 2700K, 3000K, 3500K, 4000K; and available with three interchangeable optics. The trim selection is from a full line of slope ceiling trims including reflectors, baffles, and lens choices. The high-efficiency, energy-saving solution provides up to 73 percent in energy savings with virtually no maintenance for residential, hospitality, retail and institutional spaces.





Halo AllSlope
LED housing

Halo AllSlope
LED light engine
(1200 or 1800 Series)

interchangeable
lens

Halo slope
trim

HL6 LED light engines



Compatible LED housings

HL612ICAT - ICAT new construction, 120V

HL618TAT - Non-IC new construction, air-tite, UNV

HL618TCP - Non-IC new construction, Chicago plenum, UNV

HLM69xx

AllSlope LED light engine
(interchangeable lens optics)

xx - 27=2700K, **30**=3000K, **35**=3500K, **40**=4000K

Lens optic selection



HL6NFL
narrow flood (NFL)
lens



HL6FL
flood (FL) lens



HL6WFL
wide flood (WFL)
lens



HL6 AllSlope housings and trims

70

lens and diffuser



70P

albalite glass lens, white polymer trim



70PS

albalite glass lens, white polymer trim,
wet location



70SNS

albalite glass lens, satin nickel polymer
trim, wet location

71

drop glass lens and diffuser



71P

drop opal glass lens, white polymer trim



71PS

drop opal glass lens, white polymer trim,
wet location "dead front" showerlight

6160

drop opal plastic lens



6160WH

drop opal plastic lens, white plastic trim

6162

drop opal plastic lens



6162WH

drop opal plastic lens with upper reflector,
white plastic trim



73

fresnel glass lens and diffuser



73P

drop opal plastic lens, white polymer trim



73PS

drop opal plastic lens, white polymer trim,
wet location "dead front" showerlight

455

reflector



455SC

specular clear reflector, white trim



455H

semi-specular haze reflector, white trim



455SN

satin nickel reflector and trim



455TBZ

tuscan bronze reflector and trim

456

Coilex® baffle



456W

white coilex baffle and trim



456P

black coilex baffle, white trim



E26

expanded collection

Halo has expanded its Fit-All concept with a new collection of 4-Inch, 5-inch and 6-inch housings and trims designed for the new generation of E26 screwbase halogen, LED, and CFL lamps; with a focus on value, streamlined design, and exclusive installation-friendly features.

With continued nationwide adoption of new E26 screw base lamps in LED, CFL, and halogen technologies; Halo has expanded the line with compatible new trim and housing designs. The expanded E26 series is ideal for both residential and light commercial downlighting applications with its versatile installation, attractive design, universally accepted E26 screw base, and capability to employ new energy efficient lamps.

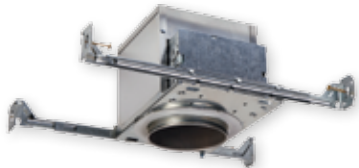
New trims feature a consistent design style in an all-inclusive offering of full-cone and half-cone reflectors and baffles; gimbal and eyeball directionals; open and lensed wet location with “dead-front” options.

Housings feature efficient installation capability in a compact-sized frame with an offering of socket-bracket and no-socket-bracket models. New installation features include a repositionable junction box with hinged door for flexibility in tight spaces; All Nail! bar hangers with new Q-Channel interlocking bars that pass-thru for increased stability and tool-less shortening. Remodels feature an exciting new retention method of speed clamps with locking tabs that adjust for ceilings from 3/8” – 2”.





4" housings



E4ICATSB

4" ICAT new construction, air-tite



E4TATSB

4" Non-IC new construction, air-tite



E4RTATSB

4" Non-IC remodel, air-tite



4" trims

4001

step plastic baffle



4001WB

white baffle and trim



4001BB

black baffle, white trim

4002

eyeball, 30° tilt



4002WH

white eyeball

4003

reflector



4003SC

specular clear, white trim

4010*

metal baffle



4010WB

white baffle and trim



4010BB

black baffle, white trim

4013

full cone metal baffle



4013WB

white baffle and trim



4013BB

black baffle, white trim

4055

glass lens



4055WH

glass lens, white trim

5" housings



E5ICAT

5" ICAT new construction



E5ICATNB

5" ICAT new construction, no socket bracket



E5TAT

5" Non-ICAT new construction



E5TATNB

5" Non-ICAT new construction, no socket bracket



E5RICAT

5" ICAT remodel



E5RTAT

5" Non-ICAT remodel

5" reflectors

5107

specular reflector



5107SC

specular reflector, white trim

5120

full cone reflector



5120WH

white reflector and trim

5121

shallow full cone reflector



5121WH

white reflector and trim



5120SN

satin nickel reflector and trim



5120TBZ

tuscan bronze reflector and trim



5" baffles

5102

tapered metal baffle



5102WB

white baffle and trim



5102BB

black baffle and white trim

5109

coilex® tapered baffle



5109WB

white plastic tapered coilex baffle and trim



5109BB

black plastic tapered coilex baffle and white trim



5109BKBB

black plastic tapered coilex baffle and trim

5110

perftex™ baffle



5110WB

white perftex baffle and trim



5110BB

black perftex baffle and white trim



5110BKBB

black perftex baffle and trim

5125

full cone with baffle



5125WB

white baffle and trim



5125BB

black baffle and white trim



5125BKBB

black baffle and trim

5126

shallow full cone with baffle



5126WB

white baffle and trim



5126BB

black baffle and white trim

5" adjustables

5130

eyeball, 35° tilt, PAR30



5130WH

white eyeball and trim

5165

gimbal, 25° tilt, PAR30



5165WH

white gimbal and trim



5165SN

satin nickel gimbal and trim

5222

regressed adjustable gimbal, 30° tilt



5222WB

white baffle and white trim



5222SC

specular clear reflector and white trim

5135

eyeball, 35° tilt, PAR20



5135WH

white eyeball and trim



5165BK

black gimbal and trim



5165TBZ

tuscan bronze gimbal and trim



5222BB

black baffle and white trim



5222H

haze reflector and white trim

5" showerlights

5145*

open wet location shallow reflector



5145WH
white



5145SN
satin nickel



5145TBZ
tuscan bronze

5146*

open wet location full reflector



5146WH
white



5146SN
satin nickel



5146TBZ
tuscan bronze

5150

frost glass lens



5150WH
frost lens, white plastic trim



5150SN
frost lens, satin nickel
plastic trim



5150TBZ
frost lens, tuscan bronze
plastic trim



5162

drop opal plastic lens



5162WH

drop opal plastic lens with upper reflector, white plastic trim

5230

squirele frost glass lens, metal trim



5230AH

frost glass lens, aluminum haze squirele trim



5230PN

frost glass lens, polished nickel squirele trim



5230SN

frost glass lens, satin nickel squirele trim



5230TBZ

frost glass lens, tuscan bronze squirele trim

5255

soft square, frost glass lens



5255WH

frost glass lens, white plastic trim



5255SN

frost glass lens, satin nickel plastic trim



5255TBZ

frost glass lens, tuscan bronze plastic trim



5" open and splay

5175

open, wide trim



5175WH

white

5176 open, wide trim,
socket supporting



5176WH

white

5185

splay



5185WH

white

5186

splay, socket supporting



5186WH

white



5175SN

satin nickel



5176SN

satin nickel



5185SN

satin nickel



5186SN

satin nickel



5175TBZ

tuscan bronze



5176TBZ

tuscan bronze



5185TBZ

tuscan bronze



5186TBZ

tuscan bronze

6" housings



E7ICAT

6" ICAT new construction



E7ICATNB

6" ICAT new construction, no socket bracket



E7RICAT

6" ICAT remodel



E7TAT

6" Non-IC new construction



E7TATNB

6" Non-IC new construction, no socket bracket



E7RTAT

6" Non-IC remodel

6" shallow housings



E27ICAT

6" shallow ICAT new construction



E27TAT

6" shallow Non-IC new construction



E27RICAT

6" shallow ICAT remodel



E27RTAT

6" shallow Non-IC remodel



6" reflectors

6106

straight reflector



6106SC

specular reflector, white trim

6107

tapered reflector



6107SC

specular reflector, white trim

6120

full cone reflector



6120WH

white reflector and trim



6120SN

satin nickel reflector and trim



6120TBZ

tuscan bronze reflector and trim

6121

shallow full cone reflector



6121WH

white reflector and trim



6" baffles

6100

tapered metal baffle



6100WB

white baffle and (2) white trims
(wide and narrow included)



6100BB

black baffle and (2) white trims
(wide and narrow included)

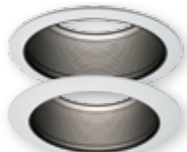
6101

straight metal baffle



6101WB

white baffle and (2) white trims
(wide and narrow included)



6101BB

black baffle and (2) white trims
(wide and narrow included)

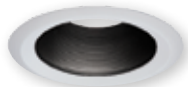
6102

tapered metal baffle



6102WB

white baffle and trim



6102BB

black baffle and white trim

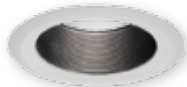
6103

straight metal baffle



6103WB

white baffle and trim



6103BB

black baffle and trim

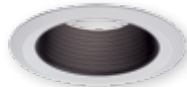
6108

coilex® straight baffle



6108WB

white plastic straight coilex baffle
and trim



6108BB

black plastic straight coilex baffle
and white trim



6108BKBB

black plastic straight coilex baffle
and trim

6109

coilex® tapered baffle



6109WB

white plastic tapered coilex baffle and trim



6109BB

black plastic tapered coilex baffle and white trim



6109BKBB

black plastic tapered coilex baffle and trim

6110

perftex™ baffle



6110WB

white perftex baffle and trim



6110BB

black perftex baffle and white trim



6110BKBB

black perftex baffle and trim

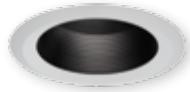
6125

full cone with baffle



6125WB

white baffle and trim



6125BB

black baffle and white trim



6125BKBBB

black baffle and trim

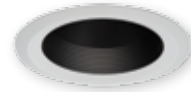
6126

shallow full cone with baffle



6126WB

white baffle and trim



6126BB

black baffle and white trim

6" adjustables

6130

eyeball, 35° tilt PAR30



6130WH

white eyeball and trim

6170

gimbal, 25° tilt PAR38



6170WH

white gimbal and trim



6170SN

satin nickel gimbal and trim



6170BK

black gimbal and trim



6170TBZ

tuscan bronze gimbal and trim



6215

double gimbal 35°-50° tilt, PAR38



6215WH
white gimbal and trim



6215SN
satin nickel gimbal and trim



6215BK
black gimbal and trim



6215TBZ
tuscan bronze gimbal and trim

6222

regressed adjustable, 45° tilt



6222WB
white baffle and white trim



6222BB
black baffle and white trim



6222SC
specular clear reflector and white trim



6222H
haze reflector and white trim



6" showerlights

6145*

open wet location shallow reflector



6145WH
white



6145SN
satin nickel



6145TBZ
tuscan bronze

6146*

open wet location full reflector



6146WH
white



6146SN
satin nickel



6146TBZ
tuscan bronze

6150

frost glass lens



6150WH
frost lens, white plastic trim



6150SN
frost lens, satin nickel
plastic trim



6150TBZ
frost lens, tuscan bronze
plastic trim

6160

drop opal plastic lens



6160WH
drop opal plastic lens,
white plastic trim

6162

drop opal plastic lens



6162WH
drop opal plastic lens with upper
reflector, white plastic trim

6230

squircle frost glass lens, metal trim



6230AH

frost glass lens,
aluminum haze squircle trim



6230PN

frost glass lens,
polished nickel squircle trim



6230SN

frost glass lens,
satin nickel squircle trim



6230TBZ

frost glass lens,
tuscan bronze squircle trim

6255

soft square, frost glass lens



6255WH

frost glass lens, white
plastic trim



6255SN

frost glass lens, satin nickel
plastic trim



6255TBZ

frost glass lens, tuscan bronze
plastic trim



Eaton

1121 Highway 74 South
Peachtree City, GA 30269
P: 770-486-4800
www.eaton.com/lighting

Canada Sales
5925 McLaughlin Road
Mississauga, Ontario L5R 1B8
P: 905-501-3000
F: 905-501-3172

Our Lighting Product Lines

Halo
Halo Commercial
Portfolio
IRiS
RSA
Metalux
Corelite
Neo-Ray
Fail-Safe
MWS
Ametrix
Shaper
io
Lumark
McGraw-Edison
Invue
Ephesus
Lumière
Streetworks
AtLite
Sure-Lites

Our Controls Product Lines

Greengate
iLumin
Zero 88
Fifth Light Technology
iLight (International Only)



Powering Business Worldwide

Eaton

1121 Highway 74 South
Peachtree City, GA 30269
P: 770-486-4800
www.eaton.com/lighting

© 2016 Eaton
All Rights Reserved
Printed in USA
Publication No. BR518018EN
January 2016

Eaton is a registered trademark.

All other trademarks are property
of their respective owners.

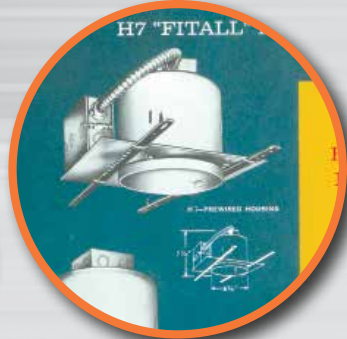
Lighting Solutions
Recessed downlighting products

HALO



EATON

Powering Business Worldwide



For over 60 years, Halo has been the industry leader in recessed and track lighting providing innovative and contractor-friendly lighting products. State-of-the-art engineering, on-going research and development, meticulous product standards, and a tradition of unparalleled service makes Halo the brand builders know and trust.



Small cardboard squares were set on a conveyor system and when an order came in for a new Halo recessed lighting product four or five people would pitch in and assemble the products. Total employee count at Halo's beginning was three people in the office and seven in the plant located in a 3,000 square ft. building in Chicago.



Saving you time, money, and energy.

SLD

4" and 6" surface LED downlight

Halo Surface LED Downlight (SLD) incorporates WaveStream™ technology to create an ultra-low profile 4" and 6" surface mounting luminaire with the performance and look of a traditional downlight. SLD is designed for installation in many square, octagon, or round junction boxes. Supply wire adapter with LED quick wiring connector included. Suitable for residential or commercial installations. Ideal for closets, storage areas, attics and basements; and may be used in 4", 5" and 6" recessed downlights. The included retrofit kit's dedicated LED wiring connector meets high efficacy code requirements.



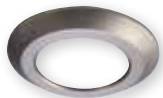


SLD4



SLD6

Designer trims (order separately)



**SLD4TRMSN
SLD6TRMSN**
satin nickel



**SLD4TRMTBZ
SLD6TRMTBZ**
tuscan bronze



**SLD4TRMWH
SLD6TRMWH**
white (paintable)

Junction box accessories (order separately)



SLD4EXT
4" Surface LED spacer ring



SLD4RAD
4" SLD round surface j-box adapter



SLD6EXT
6" Surface LED spacer ring



SLD6RAD
6" SLD round surface j-box adapter



SLD6SADPLT
6" SLD square surface adapter plate



RL

4" and 5"/6" LED retrofit downlight

The Halo RL LED is a complete 4" and 5"/6" LED baffle-trim module for recessed downlights. The RL is designed for use in new construction, remodel, and retrofit installation in Halo and other compatible 4", 5" and 6" recessed downlight housings. The integral LED driver offers 120 volt dimming capability. RL56 is offered in 600 lumen and 900 lumen series. The RL is available in RL4, RL56-600 lumen series and RL56-900 lumen series. RL models in 80 CRI and 90 CRI are offered in 2700K, 3000K, 3500K, and 4000K. Optional accessories include designer trims in white (paintable), satin nickel, and tuscan bronze.





RL4

Designer trims (order separately)



**RL4TRMSN
RL56TRMSN**
satin nickel



**RL4TRMTBZ
RL56TRMTBZ**
tuscan bronze



**RL4TRMWH
RL56TRMWH**
white (paintable)



RL56 - 600 Series



RL56 - 900 Series



RA

4" and 5"/6" LED retrofit adjustable gimbal

The Halo RA LED is a complete 4" and 5"/6" adjustable gimbal LED module; suitable for new construction, remodel, and retrofit installation in Halo and other compatible 4", 5" and 6" recessed downlight housings. The RA adjustable gimbal offers 35-degree tilt and up to 360-degree rotation. The integral LED driver offers 120 volt dimming capability. The RA4 and RA56 adjustable gimbals are offered with 90 CRI in 2700K, 3000K, 3500K and 4000K; and with beam spread options in Very Wide Flood (VWFL) and Narrow Flood (NFL) models.



Narrow Flood (NFL)

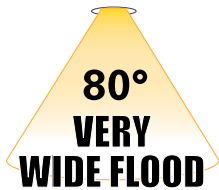


RA4069xxNFLWH



RA56069xxNFLWH

Very Wide Flood (VWFL)



RA4069xxWH



RA56069xxWH



LT

4" and 5"/6" LED retrofit baffle trim kit

The Halo LT combines the energy savings, long life and sustainability of LED in an easy to install retrofit baffle trim kit. The LT is designed for use in new construction, remodel, and retrofit installation in Halo and other compatible 4", 5" and 6" recessed downlight housings. The diffuse lens provides shielding to the source and wet location listing; suitable for use in showers or in outdoor covered ceiling applications. Also conforms with NFPA requirements for closet use. Integral driver provides 120 volt phase cut dimming, an inline connector provides power using a medium base socket adapter provided or connect directly to the mating connector in the LED housings. Ships with a gasket and makes any housing airtight for added energy savings and code compliance.

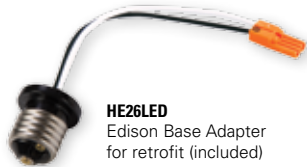




LT4



LT56



HE26LED
Edison Base Adapter
for retrofit (included)



ML56

LED downlighting system

The Halo ML56 LED downlight collection is comprised of LED modules with 5" and 6" trims. ML56 LED modules are offered in three lumen packages across the 600, 900, and 1200 series - a versatile collection of energy-efficient LED downlights for general lighting in commercial and residential applications. The Halo ML56 LED 600, 900, 1200 series modules are for either new construction or retrofitting existing 5" and 6" compatible housings (Edison screw base adapter included). Halo LED ML56 collection features excellent color (80 CRI or 90 CRI) and offers a wide selection of color temperatures (2700K, 3000K, 3500K, and 4000K). Halo LED is ENERGY STAR® Certified and can be used for California Title 24 (90 CRI is Title 20 certified for residential compliance) and IECC High Efficacy compliance with designated LED modules and LED trims.





HALO Housing

HALO ML56 LED Light Module (600 or 900 Series)

HALO ML56 LED Light Module (1200 Series)

OR

optional NFL lens[†] (1200 Series)

HALO ML56 LED Trim

*E26 Edison Screw Base Adapter (included for retrofit of non-LED housings).
[†]Optional accessory for the ML56-1200 series.

ML56 LED Modules

600 or 900 Series

1200 Series



1200 Series Accessories



standard diffusing lens (included)



BFR56NFL[†]
 narrow flood lens (NFL)



BFR56MH[†]
 media holder (requires BFR56NFL & L345SF, ordered separately)

L345SF
 soft focus lens (requires BFR56NFL & BFR56MH, ordered separately)



ML56 5" trims

592
reflector



592W
white



592SC
specular clear



592H
haze

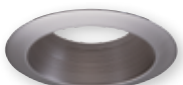
593
baffle



593WB
white baffle and trim



593BB
black baffle, white trim



593SN
satin nickel baffle and trim



593TBZ
tuscan bronze baffle and trim

596
baffle



596WB
white baffle and trim

591 non-conductive
"dead front" baffle



591WB
white baffle and trim
(for 600 Series module only)

594
semi-regressed eyeball



594WB
white



594SN
white



594TBZ
white

595
wall wash



595WW
white

5" oversize trim ring



TRM590WH
white

ML56 6" trims

692
reflector



692W
white



692SC
specular clear



692H
haze

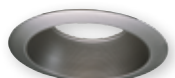
693
baffle



693WB
white baffle and trim



693BB
black baffle, white trim



693SN
satin nickel baffle and trim



693TBZ
tuscan bronze baffle and trim

696
baffle



696WB
white baffle and trim

691 non-conductive
"dead front" baffle



691WB
white baffle and trim
(for 600 Series module only)

694
semi-regressed eyeball



694WB
white



694SN
white



694TBZ
white

695
wall wash



695WW
white

6" oversize trim ring



TRM690WH
white

H4 LED downlight system

Halo H4 LED downlight collection is a three-part system that consists of a 4" downlight housing, light engine module, and trim to be installed according to the pace of the project. The H4 collection is offered in 90 CRI, R9 > 50, with four LED light engines, accepts 16 different trims including reflector, baffle and lensed. Adjustable gimbal light engines feature aiming up to 35° tilt, and interchangeable reflector in 25°, 35°, and 55° beam. Housings are offered in Insulated Ceiling (IC) and Non-Insulated Ceiling (Non-IC), both in Air-Tite™ models that include dimmable LED drivers. H4 LED is ENERGY STAR® certified and can be used for California Title 24 (Title 20 Certified), and IECC High Efficacy compliance with designated LED modules and LED trims. Halo 4" LED downlights save energy, without sacrificing performance.



H4 adjustable gimbal and light engine

Round and square gimbal styles with interchangeable beam reflectors



ELG4069xx WH/SN/TBZ
round adjustable LED light engine



ELSG4069xx WH/SN/TBZ
square adjustable LED light engine

xx - 27=2700K, 30=3000K, 35=3500K, 40=4000K
WH=White, **SN**=Satin Nickel, **TBZ**=Tuscan Bronze

TL412RK

gimbal reflector kit (optional)



25° Reflector
(Included)



35° Flood
Reflector



50° Wide
Flood Reflector

Compatible LED housings

- H457ICAT1E** - ICAT new construction, 120V
- H457RICAT1E** - ICAT remodel, 120V
- H457TATE010** - Non-IC new construction, UNV
- H457TCPE010** - Non-IC new construction, chicago plenum, UNV
- H457RTATE010** - Non-IC remodel, UNV

Available finishes



WH
White



SN
satin nickel



TBZ
tuscan bronze



H4 light engine and trims



EL4069xx
LED light engine
(interchangeable trim options)

xx - **27**=2700K, **30**=3000K, **35**=3500K, **40**=4000K

Compatible LED housings

H457ICAT1E - ICAT new construction, 120V

H457RICAT1E - ICAT remodel, 120V

H457TATE010 - Non-IC new construction, UNV

H457TCPE010 - Non-IC new construction,
chicago plenum, UNV

H457RTATE010 - Non-IC remodel, UNV

TL408
square downlight baffle



TL408WHWB
white baffle and trim with Solite® lens



TL408WHBB
black baffle, white trim with Solite® lens



TL408SNBB
black baffle, satin nickel trim with Solite® lens



TL408TBZBB
black baffle, tuscan bronze trim with Solite® lens

TL410
deep regressed dome lens reflector



TL410WH
white reflector and trim



TL410SBK
specular black reflector, white trim



TL410SC
specular clear reflector, white trim



TL410H
haze reflector, white trim



TL410SN
satin nickel reflector and trim



TL410TBZ
tuscan bronze reflector and trim

TL411
deep regressed dome lens baffle



TL411WB
white baffle and trim



TL411BB
black baffle, white trim

TL422
polymer "dead front" shower trim



TL422PS
white polymer baffle and ring with
prismatic clear polymer lens

TL402

Solite® regressed flat lens reflector



TL402WHS
white reflector and trim



TL402SBKS
specular black reflector, white trim



TL402SCS
specular clear reflector, white trim



TL402HS
haze reflector, white trim



TL402SN
satin nickel reflector and trim



TL402TBZ
tuscan bronze reflector and trim

TL402

Solite® regressed flat lens baffle



TL403WB
white baffle and trim



TL403BB
black baffle, white trim

TL409

wall wash



TL409WW
semi-specular reflector with wall wash
optic, diffusing lens, white trim



TL409WHWW
white reflector with wall wash optic,
diffusing lens, white trim



HL6

ALLSLOPE LED recessed lighting

Featuring unique interchangeable beam-forming optics, full range dimming, multiple color temperatures and trim options, the Halo HL6 AllSlope LED 6" downlight system is specifically designed for slope ceilings with pitch aiming from 2/12 (10 degrees) to 12/12 (45 degrees). The innovative design allows the LED light engine full adjustment capability so it can be aimed straight down in accordance with the ceiling pitch, resulting in outstanding performance and appearance. The three piece system consists of a 6-inch aperture housing, available in 1200 lumen series or 1800 lumen series; LED light engines are offered with 90 CRI (R9>50) in 2700K, 3000K, 3500K, 4000K; and available with three interchangeable optics. The trim selection is from a full line of slope ceiling trims including reflectors, baffles, and lens choices. The high-efficiency, energy-saving solution provides up to 73 percent in energy savings with virtually no maintenance for residential, hospitality, retail and institutional spaces.





Halo AllSlope
LED housing

Halo AllSlope
LED light engine
(1200 or 1800 Series)

interchangeable
lens

Halo slope
trim

HL6 LED light engines



Compatible LED housings

HL612ICAT - ICAT new construction, 120V

HL618TAT - Non-IC new construction, air-tite, UNV

HL618TCP - Non-IC new construction, Chicago plenum, UNV

HLM69xx

AllSlope LED light engine
(interchangeable lens optics)

xx - 27=2700K, **30**=3000K, **35**=3500K, **40**=4000K

Lens optic selection



HL6NFL
narrow flood (NFL)
lens



HL6FL
flood (FL) lens



HL6WFL
wide flood (WFL)
lens



HL6 AllSlope housings and trims

70

lens and diffuser



70P

albalite glass lens, white polymer trim



70PS

albalite glass lens, white polymer trim,
wet location



70SNS

albalite glass lens, satin nickel polymer
trim, wet location

71

drop glass lens and diffuser



71P

drop opal glass lens, white polymer trim



71PS

drop opal glass lens, white polymer trim,
wet location "dead front" showerlight

6160

drop opal plastic lens



6160WH

drop opal plastic lens, white plastic trim

6162

drop opal plastic lens



6162WH

drop opal plastic lens with upper reflector,
white plastic trim



73

fresnel glass lens and diffuser



73P

drop opal plastic lens, white polymer trim



73PS

drop opal plastic lens, white polymer trim,
wet location "dead front" showerlight

455

reflector



455SC

specular clear reflector, white trim



455H

semi-specular haze reflector, white trim



455SN

satin nickel reflector and trim



455TBZ

tuscan bronze reflector and trim

456

Coilex® baffle



456W

white coilex baffle and trim



456P

black coilex baffle, white trim



E26 expanded collection

Halo has expanded its Fit-All concept with a new collection of 4-Inch, 5-inch and 6-inch housings and trims designed for the new generation of E26 screwbase halogen, LED, and CFL lamps; with a focus on value, streamlined design, and exclusive installation-friendly features.

With continued nationwide adoption of new E26 screw base lamps in LED, CFL, and halogen technologies; Halo has expanded the line with compatible new trim and housing designs. The expanded E26 series is ideal for both residential and light commercial downlighting applications with its versatile installation, attractive design, universally accepted E26 screw base, and capability to employ new energy efficient lamps.

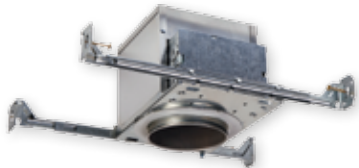
New trims feature a consistent design style in an all-inclusive offering of full-cone and half-cone reflectors and baffles; gimbal and eyeball directionals; open and lensed wet location with “dead-front” options.

Housings feature efficient installation capability in a compact-sized frame with an offering of socket-bracket and no-socket-bracket models. New installation features include a repositionable junction box with hinged door for flexibility in tight spaces; All Nail! bar hangers with new Q-Channel interlocking bars that pass-thru for increased stability and tool-less shortening. Remodels feature an exciting new retention method of speed clamps with locking tabs that adjust for ceilings from 3/8” – 2”.





4" housings



E4ICATSB

4" ICAT new construction, air-tite



E4TATSB

4" Non-IC new construction, air-tite



E4RTATSB

4" Non-IC remodel, air-tite



4" trims

4001

step plastic baffle



4001WB

white baffle and trim



4001BB

black baffle, white trim

4002

eyeball, 30° tilt



4002WH

white eyeball

4003

reflector



4003SC

specular clear, white trim

4010*

metal baffle



4010WB

white baffle and trim



4010BB

black baffle, white trim

4013

full cone metal baffle



4013WB

white baffle and trim



4013BB

black baffle, white trim

4055

glass lens



4055WH

glass lens, white trim

5" housings



E5ICAT

5" ICAT new construction



E5ICATNB

5" ICAT new construction, no socket bracket



E5TAT

5" Non-ICAT new construction



E5TATNB

5" Non-ICAT new construction, no socket bracket



E5RICAT

5" ICAT remodel



E5RTAT

5" Non-ICAT remodel

5" reflectors

5107

specular reflector



5107SC

specular reflector, white trim

5120

full cone reflector



5120WH

white reflector and trim

5121

shallow full cone reflector



5121WH

white reflector and trim



5120SN

satin nickel reflector and trim



5120TBZ

tuscan bronze reflector and trim



5" baffles

5102

tapered metal baffle



5102WB

white baffle and trim



5102BB

black baffle and white trim

5109

coilex® tapered baffle



5109WB

white plastic tapered coilex baffle and trim



5109BB

black plastic tapered coilex baffle and white trim



5109BKBB

black plastic tapered coilex baffle and trim

5110

perftex™ baffle



5110WB

white perftex baffle and trim



5110BB

black perftex baffle and white trim



5110BKBB

black perftex baffle and trim

5125

full cone with baffle



5125WB

white baffle and trim



5125BB

black baffle and white trim



5125BKBB

black baffle and trim

5126

shallow full cone with baffle



5126WB

white baffle and trim



5126BB

black baffle and white trim

5" adjustables

5130

eyeball, 35° tilt, PAR30



5130WH

white eyeball and trim

5165

gimbal, 25° tilt, PAR30



5165WH

white gimbal and trim



5165SN

satin nickel gimbal and trim

5222

regressed adjustable gimbal, 30° tilt



5222WB

white baffle and white trim



5222SC

specular clear reflector and white trim

5135

eyeball, 35° tilt, PAR20



5135WH

white eyeball and trim



5165BK

black gimbal and trim



5165TBZ

tuscan bronze gimbal and trim



5222BB

black baffle and white trim



5222H

haze reflector and white trim

5" showerlights

5145*

open wet location shallow reflector



5145WH
white



5145SN
satin nickel



5145TBZ
tuscan bronze

5146*

open wet location full reflector



5146WH
white



5146SN
satin nickel



5146TBZ
tuscan bronze

5150

frost glass lens



5150WH
frost lens, white plastic trim



5150SN
frost lens, satin nickel
plastic trim



5150TBZ
frost lens, tuscan bronze
plastic trim



5162

drop opal plastic lens



5162WH

drop opal plastic lens with upper reflector, white plastic trim

5230

squirele frost glass lens, metal trim



5230AH

frost glass lens, aluminum haze squirele trim



5230PN

frost glass lens, polished nickel squirele trim



5230SN

frost glass lens, satin nickel squirele trim



5230TBZ

frost glass lens, tuscan bronze squirele trim

5255

soft square, frost glass lens



5255WH

frost glass lens, white plastic trim



5255SN

frost glass lens, satin nickel plastic trim



5255TBZ

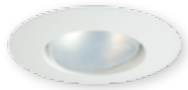
frost glass lens, tuscan bronze plastic trim



5" open and splay

5175

open, wide trim



5175WH

white

5176 open, wide trim,
socket supporting



5176WH

white

5185

splay



5185WH

white

5186

splay, socket supporting



5186WH

white



5175SN

satin nickel



5176SN

satin nickel



5185SN

satin nickel



5186SN

satin nickel



5175TBZ

tuscan bronze



5176TBZ

tuscan bronze



5185TBZ

tuscan bronze



5186TBZ

tuscan bronze

6" housings



E7ICAT

6" ICAT new construction



E7ICATNB

6" ICAT new construction, no socket bracket



E7RICAT

6" ICAT remodel



E7TAT

6" Non-IC new construction



E7TATNB

6" Non-IC new construction, no socket bracket



E7RTAT

6" Non-IC remodel

6" shallow housings



E27ICAT

6" shallow ICAT new construction



E27TAT

6" shallow Non-IC new construction



E27RICAT

6" shallow ICAT remodel



E27RTAT

6" shallow Non-IC remodel



6" reflectors

6106

straight reflector



6106SC

specular reflector, white trim

6107

tapered reflector



6107SC

specular reflector, white trim

6120

full cone reflector



6120WH

white reflector and trim



6120SN

satin nickel reflector and trim



6120TBZ

tuscan bronze reflector and trim

6121

shallow full cone reflector



6121WH

white reflector and trim



6" baffles

6100

tapered metal baffle



6100WB

white baffle and (2) white trims
(wide and narrow included)



6100BB

black baffle and (2) white trims
(wide and narrow included)

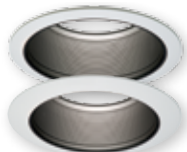
6101

straight metal baffle



6101WB

white baffle and (2) white trims
(wide and narrow included)



6101BB

black baffle and (2) white trims
(wide and narrow included)

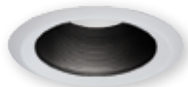
6102

tapered metal baffle



6102WB

white baffle and trim



6102BB

black baffle and white trim

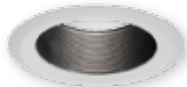
6103

straight metal baffle



6103WB

white baffle and trim



6103BB

black baffle and trim

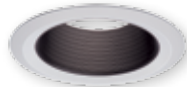
6108

coilex® straight baffle



6108WB

white plastic straight coilex baffle
and trim



6108BB

black plastic straight coilex baffle
and white trim



6108BKBB

black plastic straight coilex baffle
and trim

6109

coilex® tapered baffle



6109WB

white plastic tapered coilex baffle
and trim



6109BB

black plastic tapered coilex baffle
and white trim



6109BKBB

black plastic tapered coilex baffle
and trim

6110

perftex™ baffle



6110WB

white perftex baffle and trim



6110BB

black perftex baffle and white
trim



6110BKBB

black perftex baffle and trim

6125

full cone with baffle



6125WB

white baffle and trim



6125BB

black baffle and white trim



6125BKBBB

black baffle and trim

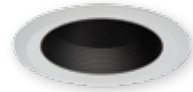
6126

shallow full cone with baffle



6126WB

white baffle and trim



6126BB

black baffle and white trim

6" adjustables

6130

eyeball, 35° tilt PAR30



6130WH

white eyeball and trim

6170

gimbal, 25° tilt PAR38



6170WH

white gimbal and trim



6170SN

satin nickel gimbal and trim



6170BK

black gimbal and trim



6170TBZ

tuscan bronze gimbal and trim



6215

double gimbal 35°-50° tilt, PAR38



6215WH

white gimbal and trim



6215SN

satin nickel gimbal and trim



6215BK

black gimbal and trim



6215TBZ

tuscan bronze gimbal and trim

6222

regressed adjustable, 45° tilt



6222WB

white baffle and white trim



6222BB

black baffle and white trim



6222SC

specular clear reflector and white trim



6222H

haze reflector and white trim



6" showerlights

6145*

open wet location shallow reflector



6145WH
white



6145SN
satin nickel



6145TBZ
tuscan bronze

6146*

open wet location full reflector



6146WH
white



6146SN
satin nickel



6146TBZ
tuscan bronze

6150

frost glass lens



6150WH
frost lens, white plastic trim



6150SN
frost lens, satin nickel
plastic trim



6150TBZ
frost lens, tuscan bronze
plastic trim

6160

drop opal plastic lens



6160WH
drop opal plastic lens,
white plastic trim

6162

drop opal plastic lens



6162WH
drop opal plastic lens with upper
reflector, white plastic trim

6230

squircle frost glass lens, metal trim



6230AH

frost glass lens,
aluminum haze squircle trim



6230PN

frost glass lens,
polished nickel squircle trim



6230SN

frost glass lens,
satin nickel squircle trim



6230TBZ

frost glass lens,
tuscan bronze squircle trim

6255

soft square, frost glass lens



6255WH

frost glass lens, white
plastic trim



6255SN

frost glass lens, satin nickel
plastic trim



6255TBZ

frost glass lens, tuscan bronze
plastic trim



Eaton

1121 Highway 74 South
Peachtree City, GA 30269
P: 770-486-4800
www.eaton.com/lighting

Canada Sales
5925 McLaughlin Road
Mississauga, Ontario L5R 1B8
P: 905-501-3000
F: 905-501-3172

Our Lighting Product Lines

Halo
Halo Commercial
Portfolio
IRiS
RSA
Metalux
Corelite
Neo-Ray
Fail-Safe
MWS
Ametrix
Shaper
io
Lumark
McGraw-Edison
Invue
Ephesus
Lumière
Streetworks
AtLite
Sure-Lites

Our Controls Product Lines

Greengate
iLumin
Zero 88
Fifth Light Technology
iLight (International Only)



Powering Business Worldwide

Eaton

1121 Highway 74 South
Peachtree City, GA 30269
P: 770-486-4800
www.eaton.com/lighting

© 2016 Eaton
All Rights Reserved
Printed in USA
Publication No. BR518018EN
January 2016

Eaton is a registered trademark.

All other trademarks are property
of their respective owners.