



QUICK 3/8" CHANNEL NUT WITH PUSH-TO-INSTALL TECHNOLOGY FOR STRUT CHANNEL - 750LB

CATALOG NUMBER

CRLS37EG



FEATURES

Provides fast universal attachment of threaded rod and hardware to standard strut profiles

Can be used to prefabricate assemblies which can be quickly pushed onto previously installed threaded rods

Works with slightly damaged threads and minor burrs on the threaded rod

PRODUCT ATTRIBUTES

Material: Cast Iron

Finish: Electrogalvanized

Rod Size (RS): 3/8"

A: 0.91"

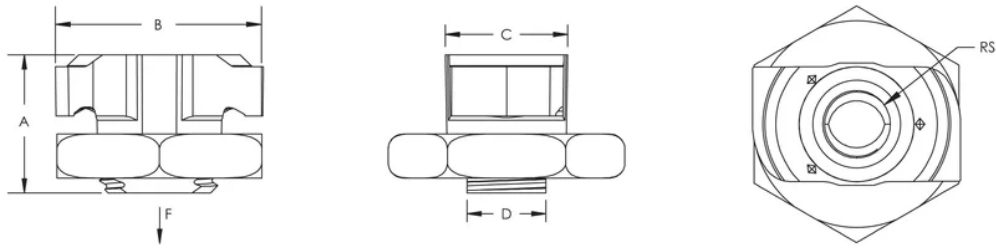
B: 1.4"

C: 0.77"

D: 0.53"

Static Load (F): 750 lb

DIAGRAMS



WARNING

nVent products shall be installed and used only as indicated in nVent's product instruction sheets and training materials. Instruction sheets are available at www.nvent.com and from your nVent customer service representative. Improper installation, misuse, misapplication or other failure to completely follow nVent's instructions and warnings may cause product malfunction, property damage, serious bodily injury and death and/or void your warranty.

North America

+1.800.753.9221
Option 1 – Customer Care
Option 2 – Technical Support

Europe

Netherlands:
+31 800-0200135
France:
+33 800 901 793

Europe

Germany:
800 1890272
Other Countries:
+31 13 5835404

APAC

Shanghai:
+ 86 21 2412 1618/19
Sydney:
+61 2 9751 8500



Our powerful portfolio of brands:
nVent.com **CADDY ERICO HOFFMAN RAYCHEM SCHROFF**
TRACER



QUICK 3/8" CHANNEL NUT WITH PUSH-TO-INSTALL TECHNOLOGY FOR STRUT CHANNEL - 750LB

CATALOG NUMBER

CRLS37EG



FEATURES

Provides fast universal attachment of threaded rod and hardware to standard strut profiles

Can be used to prefabricate assemblies which can be quickly pushed onto previously installed threaded rods

Works with slightly damaged threads and minor burrs on the threaded rod

PRODUCT ATTRIBUTES

Material: Cast Iron

Finish: Electrogalvanized

Rod Size (RS): 3/8"

A: 0.91"

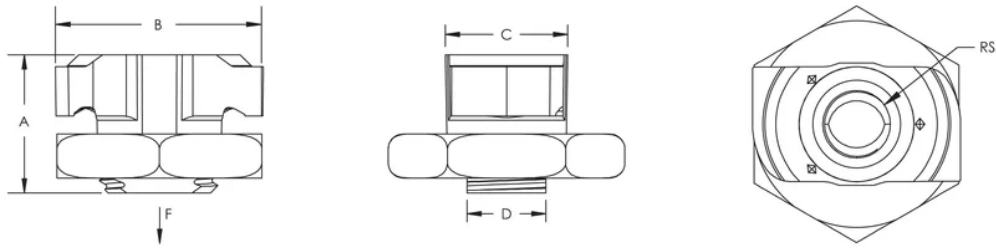
B: 1.4"

C: 0.77"

D: 0.53"

Static Load (F): 750 lb

DIAGRAMS



WARNING

nVent products shall be installed and used only as indicated in nVent's product instruction sheets and training materials. Instruction sheets are available at www.nvent.com and from your nVent customer service representative. Improper installation, misuse, misapplication or other failure to completely follow nVent's instructions and warnings may cause product malfunction, property damage, serious bodily injury and death and/or void your warranty.

North America

+1.800.753.9221
Option 1 – Customer Care
Option 2 – Technical Support

Europe

Netherlands:
+31 800-0200135
France:
+33 800 901 793

Europe

Germany:
800 1890272
Other Countries:
+31 13 5835404

APAC

Shanghai:
+ 86 21 2412 1618/19
Sydney:
+61 2 9751 8500



Our powerful portfolio of brands:
nVent.com **CADDY ERICO HOFFMAN RAYCHEM SCHROFF**
TRACER