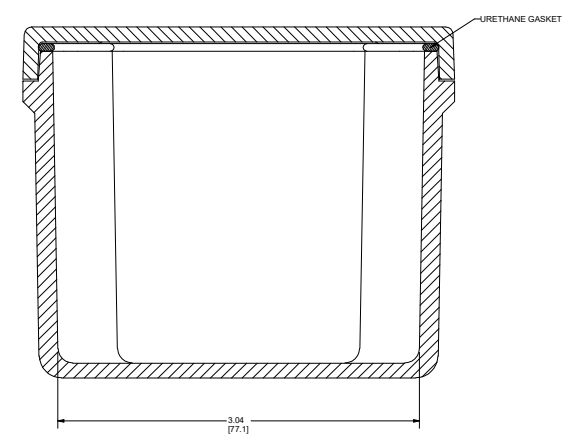
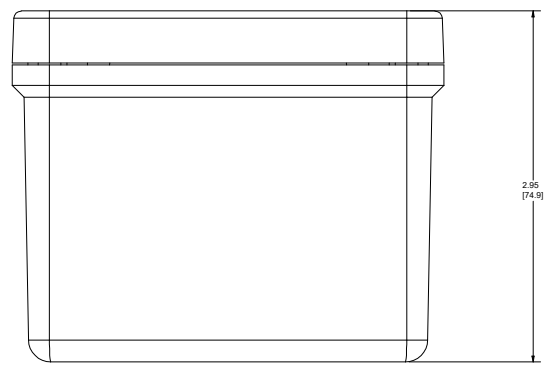


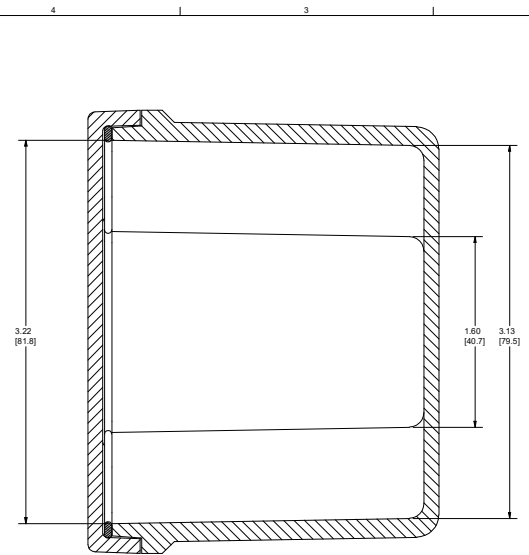
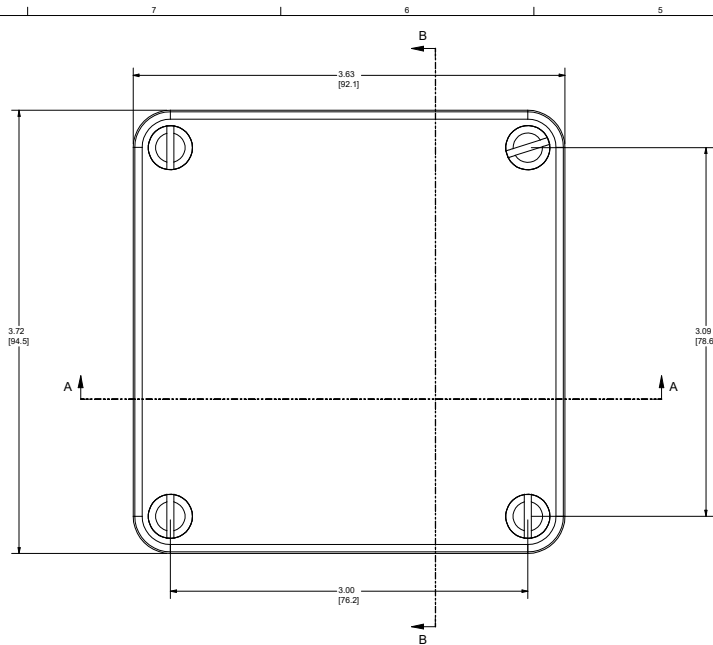
SECTION B-B



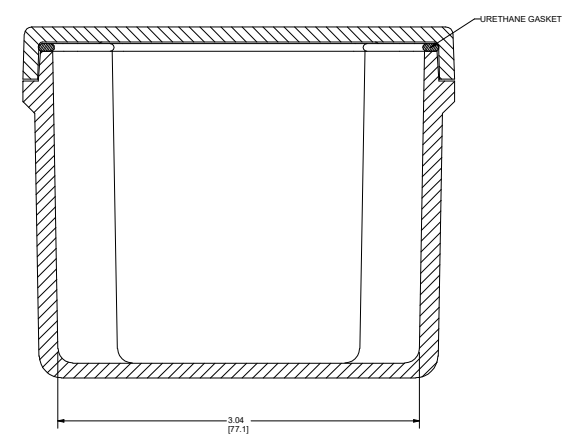
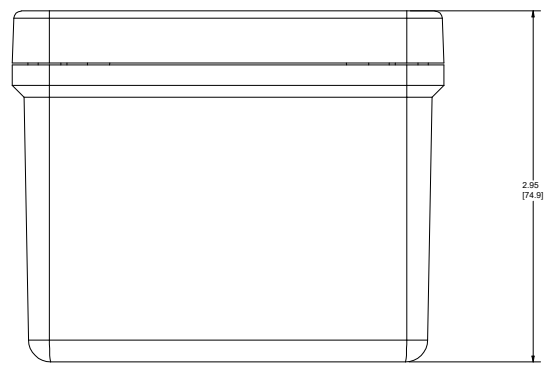
SECTION A-A

THIS DRAWING AND THE INFORMATION HEREON ARE OUR PROPERTY AND MAY BE USED BY OTHERS ONLY AS AUTHORIZED BY STANMIL ENCLOSURES DIVISION OF BEMLER INDUSTRIES. ALL RIGHTS RESERVED UNDER THE COPYRIGHT LAWS.

NOTES		1. 35, 44, 66, 12		ALL DIMENSIONS ARE INCHES (MILLIMETERS) UNLESS SPECIFIED		TOLERANCES xx ± 0.03(0.79) xxx ± 0.010 (0.25)	
MATERIAL		FR POLYESTER FIBERGLASS		DR. BY		DATE	
COLOR GLAZER GRAY RR1813				10/29/2007			
REVISION RECORD		DATE	BY	CHK	DATE	STANMIL ENCLOSURES	
LTN						BELDING, MICHIGAN 48809	
-	-	-	-	-	-	CUSTOMER	
-	-	-	-	-	-	SCALE	
-	-	-	-	-	-	DO NOT SCALE	
PART NAME		PART NO.		SHT 1 OF 1		CF332	



SECTION B-B



SECTION A-A

THIS DRAWING AND THE INFORMATION HEREON ARE OUR PROPERTY AND MAY BE USED BY OTHERS ONLY AS AUTHORIZED BY STANLEY ENCLLOSURES DIVISION OF BELLING INDUSTRIES. ALL RIGHTS RESERVED UNDER THE COPYRIGHT LAWS.

NOTES		1. 35. 44. 66. 12		ALL DIMENSIONS ARE INCHES (MILLIMETERS) UNLESS SPECIFIED		TOLERANCES xx ± 0.03(0.79) xxx ± 0.010 (0.25)	
MATERIAL		COLOR GLASSER GRAY BR1813		DR. BY		DATE	
FR POLYESTER FIBERGLASS				10/29/2007			
LTN	REVISION RECORD	DATE	BY	CHK	DATE		
-	-	-	-	-	-	BELDING, MICHIGAN 48809	
-	-	-	-	-	-	CUSTOMER	
-	-	-	-	-	-	SCALE	
-	-	-	-	-	-	PART NAME	
-	-	-	-	-	-	PART NO. CF332	
						SHT 1 OF 1	