



Powering Business Worldwide

[pe.eaton.com](http://pe.eaton.com)

## Loadcenter Main Devices

**BRL200**

**UPC:**786676460101

**Dimensions:**

- **Height:** X
- **Length:** X
- **Width:** X

**Warranties:**

- 10 year

**Specifications:**

- **Special Features:** Used with Type BR Loadcenters and Circuit Breakers
- **Type:** Main lug kit
- **Amperage Rating:** 200A
- **Mounting:** Stud
- **Number Of Poles:** Two-pole
- **Voltage Rating:** 120/240V, 208Y/120, 240V
- **Wire Size:** #1 AWG-300 kcmil Cu/Al

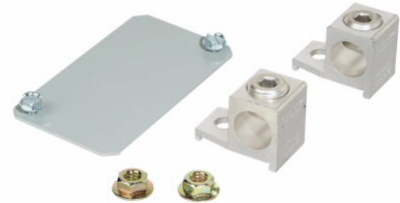
**Supporting documents:**

- [Eatons Volume 1-Residential and Light Commercial](#)
- [Eaton Specification Sheet - BRL200](#)

**Certifications:**

- UL Listed

**Product compliance:** No Data





Powering Business Worldwide

[pe.eaton.com](http://pe.eaton.com)

## Loadcenter Main Devices

**BRL200**

**UPC:**786676460101

**Dimensions:**

- **Height:** X
- **Length:** X
- **Width:** X

**Warranties:**

- 10 year

**Specifications:**

- **Special Features:** Used with Type BR Loadcenters and Circuit Breakers
- **Type:** Main lug kit
- **Amperage Rating:** 200A
- **Mounting:** Stud
- **Number Of Poles:** Two-pole
- **Voltage Rating:** 120/240V, 208Y/120, 240V
- **Wire Size:** #1 AWG-300 kcmil Cu/Al

**Supporting documents:**

- [Eaton's Volume 1-Residential and Light Commercial](#)
- [Eaton Specification Sheet - BRL200](#)

**Certifications:**

- UL Listed

**Product compliance:** No Data

