



Catalog Number
Notes
Type

Contractor Select™

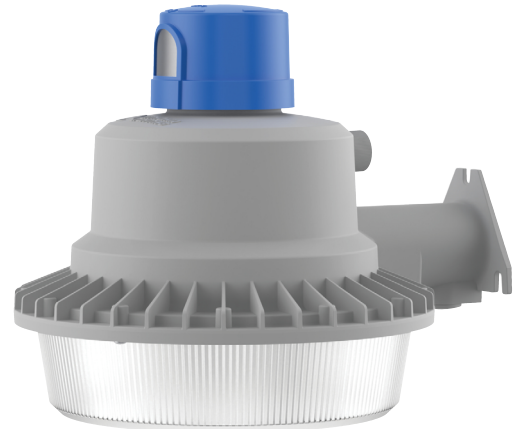
BarnGuard LED

Security Light

BarnGuard LED security lights combine a classic dayform with LED technology, ideal for upgrading the massive install base of mercury vapor or high pressure sodium (HPS) luminaires. The BarnGuard LED security lights feature high quality white light that makes them ideal for replacing the yellow light of HPS. And with up to 10,000 lumens there is enough light to replace up to 175W Mercury Vapor luminaires while saving up to 80% in energy costs.

FEATURES:

- Two power levels can deliver either 6,000 or 10,000 lumens
- Switchable CCT (30K/40K/50K) offers warm, cool and daylight in a single fixture
- Traditional twist-lock photocell
- MVOLT(120-277V) operation for residential or commercial applications



LOCATION™

5 YEAR warranty



Adjustable Lumen Output ALO



Switchable CCT SSW2



Dusk-to-Dawn Operation PE

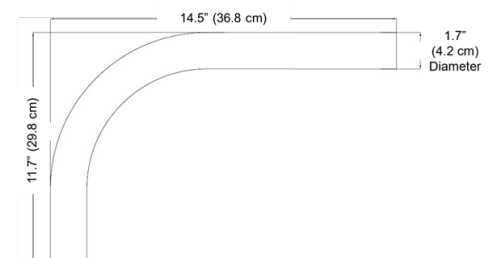
Series	 Adjustable Lumen Output ALO	 Switchable CCT SSW2	Input Voltage	Controls	Finish
BGR	6,000L 10,000L	3000K, 4000K, 5000K	120-277V	PER Twist-lock Photocell	DNA Aluminum

BGR Stock Configurations

Catalog Number	CI CODE	UPC	Pallet Quantity
BGR ALO SSW2 MVOLT PER DNA	*27702H	196182551260	72

Accessories: Order as separate catalog number.

OMA	Mounting Arm
CI Code	*136XUY
UPC Code	00745973700907





Specifications

INTENDED USE:

The energy savings, long life and easy-to-install design of the BGR LED make it the smart choice for street and alleyway lighting, farms, and building-or-postmounted doorway, pathway and yard illumination for any commercial or residential facility.

CONSTRUCTION:

Die-cast aluminum housing with an impact-resistant, polycarbonate lens. The luminaire is sealed against moisture and environmental contaminants.

OPTICS:

Removable lower diffuser provides some up-light for a traditional appearance and reduces discomfort glare. 80CRI min.

ELECTRICAL:

Energy-efficient LEDs are mounted on the integral aluminum heat sink to maximize heat dissipation and promote long LED life. 6kV surge protection. Replaceable twist-lock photocell is standard equipment. Adjustable lumen output is achieved with 0-10V continuous dimming capable drivers, ensuring system power factor >90% and THD <20%.

INSTALLATION:

Mounts directly to wooden posts or poles using (3) 2" lag bolts (included) or can be used with an existing 1-5/8" mounting arm. Can also be installed using the Lithonia Lighting OMA mounting arm (sold separately).

LISTINGS:

UL Listed to U.S. and Canadian safety standards for wet locations.

DesignLights Consortium® (DLC) qualified product. Please check the DLC Qualified Products List at www.designlights.org/QPL to confirm.

WARRANTY:

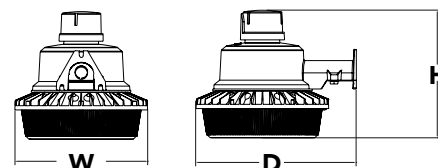
5-year limited warranty. This is the only warranty provided and no other statements in this specification sheet create any warranty of any kind. All other express and implied warranties are disclaimed. Complete warranty terms located at: www.acuitybrands.com/support/warranty/terms-and-conditions

Note: Actual performance may differ as a result of end-user environment and application. All values are design or typical values, measured under laboratory conditions at 25 °C. Specifications subject to change without notice.

Dimensions

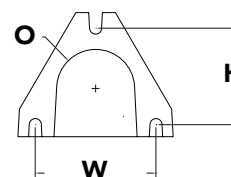
All dimensions are inches (centimeters) unless otherwise indicated.

Width: 9.45" (24.0 cm)
Height: 9.13" (23.0 cm)
Depth: 11.42" (29.0 cm)
Weight: 4.8 lbs. (2.17 kg)



BACKPLATE:

Width: 2-3/4" (7 cm)
Height: 2-1/4" (5.6 cm)
Opening: 1-3/4" (4.5 cm)



Electrical Characteristics

			Electrical Load			
			Current (A)			
Series	Delivered Lumens	Input Power	120V	208V	240V	277V
BGR	6,000L	42	0.35	0.2	0.18	0.15
	10,000L	71.8	0.6	0.35	0.3	0.26



Catalog Number
Notes
Type

Contractor Select™

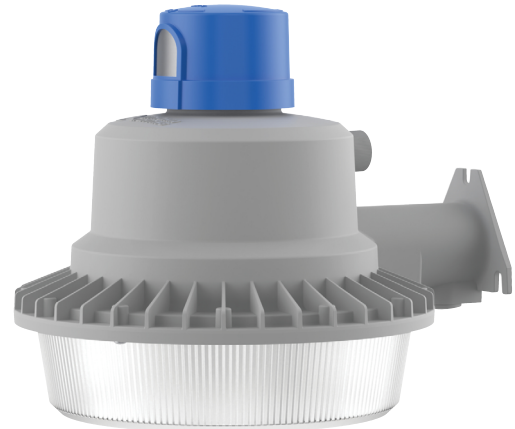
BarnGuard LED

Security Light

BarnGuard LED security lights combine a classic dayform with LED technology, ideal for upgrading the massive install base of mercury vapor or high pressure sodium (HPS) luminaires. The BarnGuard LED security lights feature high quality white light that makes them ideal for replacing the yellow light of HPS. And with up to 10,000 lumens there is enough light to replace up to 175W Mercury Vapor luminaires while saving up to 80% in energy costs.

FEATURES:

- Two power levels can deliver either 6,000 or 10,000 lumens
- Switchable CCT (30K/40K/50K) offers warm, cool and daylight in a single fixture
- Traditional twist-lock photocell
- MVOLT(120-277V) operation for residential or commercial applications



Adjustable Lumen Output
ALO



Switchable CCT
SSW2



Dusk-to-Dawn Operation
PE

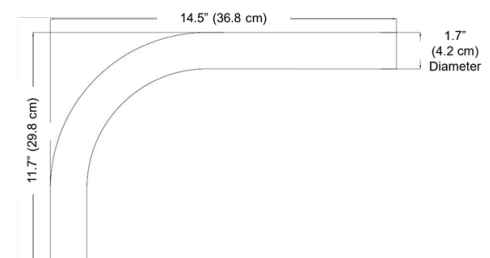
Series	Adjustable Lumen Output ALO	Switchable CCT SSW2	Input Voltage	Controls	Finish
BGR	6,000L 10,000L	3000K, 4000K, 5000K	120-277V	PER Twist-lock Photocell	DNA Aluminum

BGR Stock Configurations

Catalog Number	CI CODE	UPC	Pallet Quantity
BGR ALO SSW2 MVOLT PER DNA	*27702H	196182551260	72

Accessories: Order as separate catalog number.

OMA	Mounting Arm
CI Code	*136XUY
UPC Code	00745973700907





Specifications

INTENDED USE:

The energy savings, long life and easy-to-install design of the BGR LED make it the smart choice for street and alleyway lighting, farms, and building-or-postmounted doorway, pathway and yard illumination for any commercial or residential facility.

CONSTRUCTION:

Die-cast aluminum housing with an impact-resistant, polycarbonate lens. The luminaire is sealed against moisture and environmental contaminants.

OPTICS:

Removable lower diffuser provides some up-light for a traditional appearance and reduces discomfort glare. 80CRI min.

ELECTRICAL:

Energy-efficient LEDs are mounted on the integral aluminum heat sink to maximize heat dissipation and promote long LED life. 6kV surge protection. Replaceable twist-lock photocell is standard equipment. Adjustable lumen output is achieved with 0-10V continuous dimming capable drivers, ensuring system power factor >90% and THD <20%.

INSTALLATION:

Mounts directly to wooden posts or poles using (3) 2" lag bolts (included) or can be used with an existing 1-5/8" mounting arm. Can also be installed using the Lithonia Lighting OMA mounting arm (sold separately).

LISTINGS:

UL Listed to U.S. and Canadian safety standards for wet locations.

DesignLights Consortium® (DLC) qualified product. Please check the DLC Qualified Products List at www.designlights.org/QPL to confirm.

WARRANTY:

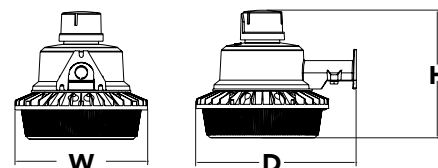
5-year limited warranty. This is the only warranty provided and no other statements in this specification sheet create any warranty of any kind. All other express and implied warranties are disclaimed. Complete warranty terms located at: www.acuitybrands.com/support/warranty/terms-and-conditions

Note: Actual performance may differ as a result of end-user environment and application. All values are design or typical values, measured under laboratory conditions at 25 °C. Specifications subject to change without notice.

Dimensions

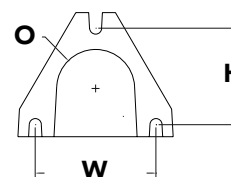
All dimensions are inches (centimeters) unless otherwise indicated.

Width: 9.45" (24.0 cm)
Height: 9.13" (23.0 cm)
Depth: 11.42" (29.0 cm)
Weight: 4.8 lbs. (2.17 kg)



BACKPLATE:

Width: 2-3/4" (7 cm)
Height: 2-1/4" (5.6 cm)
Opening: 1-3/4" (4.5 cm)



Electrical Characteristics

			Electrical Load			
			Current (A)			
Series	Delivered Lumens	Input Power	120V	208V	240V	277V
BGR	6,000L	42	0.35	0.2	0.18	0.15
	10,000L	71.8	0.6	0.35	0.3	0.26