

Insulating Bushings

For Threaded Rigid Conduit & IMC

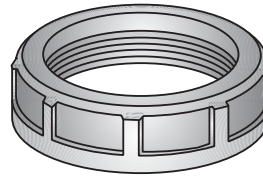
Features:

- High impact black thermosetting phenolic bushings, with at 150°C UL temperature rating, that will not soften, melt or burn.

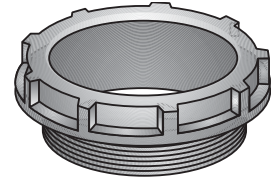
Type A

Use:

To insulate end of threaded rigid and IMC



Type A



Type BB

Third Party Certification:



UL Listed: E-11853



CSA Certified: 11584

Type BB

Use:

To insulate cables passing through metal boxes or troughs

Third Party Certification:



UL Listed: E-20933



CSA Certified: 11584

| Trade Size (inches) | Type A Catalog Number | Dimensions in Inches | |
|---------------------|-----------------------|----------------------|----------------|
| | | Outside Dia. | Overall Height |
| 1/2 | A-50 | 1 1/8 | 1/2 |
| 3/4 | A-75 | 1 3/8 | 1/2 |
| 1 | A-100 | 1 3/4 | 5/8 |
| 1 1/4 | A-125 | 2 1/8 | 3/4 |
| 1 1/2 | A-150 | 2 3/8 | 3/4 |
| 2 | A-200 | 2 7/8 | 3/4 |
| 2 1/2 | A-250 | 3 3/8 | 7/8 |
| 3 | A-300 | 4 | 7/8 |
| 3 1/2 | A-350 | 4 3/8 | 7/8 |
| 4 | A-400 | 5 1/8 | 7/8 |
| 5 | A-500 | 6 1/4 | 1 1/8 |
| 6 | A-600 | 7 3/8 | 1 1/8 |

| Trade Size (inches) | Type BB Catalog Number | Dimensions in Inches | | |
|---------------------|------------------------|----------------------|-------------------|---------------|
| | | Outside Dia. | Bushing Hole Dia. | Thread Length |
| 1/2 | BB-50 | 1 1/8 | 5/8 | 3/8 |
| 3/4 | BB-75 | 1 3/8 | 3/4 | 3/8 |
| 1 | BB-100 | 1 3/4 | 1 | 1/2 |
| 1 1/4 | BB-125 | 2 1/8 | 1 1/4 | 1/2 |
| 1 1/2 | BB-150 | 2 3/8 | 1 1/2 | 1/2 |
| 2 | BB-200 | 2 7/8 | 2 | 1/2 |
| 2 1/2 | BB-250 | 3 3/8 | 2 3/8 | 5/8 |
| 3 | BB-300 | 4 | 3 | 5/8 |
| 3 1/2 | BB-350 | 4 3/8 | 3 1/2 | 5/8 |
| 4 | BB-400 | 5 1/8 | 3 3/8 | 5/8 |
| 5 | BB-500 | 6 1/4 | 4 1/8 | 3/4 |
| 6 | BB-600 | 7 3/8 | 5 1/8 | 3/4 |

Type BBL

Use:

Type BB provided with a steel locknut

Third Party Certification:

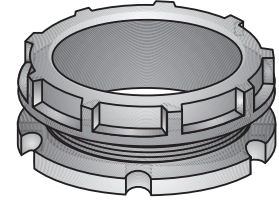


UL Listed: E-20933



CSA Certified: 11584

| Trade Size (inches) | Type BBL Catalog Number | Dimensions in Inches | | | Max Dia. |
|---------------------|-------------------------|----------------------|-----------|-----------------------|----------|
| | | Bushing Outside Dia. | Hole Dia. | Locknut Thread Length | |
| 1/2 | BBL-50 | 1 1/8 | 5/8 | 3/8 | 1 1/8 |
| 3/4 | BBL-75 | 1 3/8 | 3/4 | 3/8 | 1 1/2 |
| 1 | BBL-100 | 1 3/4 | 1 | 1/2 | 1 3/4 |
| 1 1/4 | BBL-125 | 2 1/8 | 1 1/4 | 1/2 | 2 1/8 |
| 1 1/2 | BBL-150 | 2 3/8 | 1 1/2 | 1/2 | 2 5/8 |
| 2 | BBL-200 | 2 7/8 | 2 | 1/2 | 3 1/8 |
| 2 1/2 | BBL-250 | 3 3/8 | 2 3/8 | 5/8 | 3 3/8 |
| 3 | BBL-300 | 4 | 3 | 5/8 | 4 3/8 |
| 3 1/2 | BBL-350 | 4 3/8 | 3 1/2 | 5/8 | 5 |
| 4 | BBL-400 | 5 1/8 | 3 7/8 | 5/8 | 5 1/2 |
| 5 | BBL-500 | 6 1/4 | 4 3/8 | 3/4 | 6 1/8 |
| 6 | BBL-600 | 7 3/8 | 5 1/8 | 3/4 | 8 |



Type BBL

Type ABB

Use:

A combination of Type "A" and "BB" Bushings. For insulating cables passing through metal boxes or troughs

Third Party Certification:

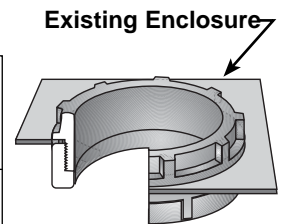


UL Listed: E-20933



CSA Certified: 011584

| Trade Size (inches) | Type ABB Catalog Number | Dimensions in Inches | | | | | Max. Encl. Thick |
|---------------------|-------------------------|----------------------|-----------|---------------|--------------------|----------|------------------|
| | | Outside Dia. | Hole Dia. | Thread Length | Shd. Ht. Type "BB" | Type "A" | |
| 1/2 | ABB-50 | 1 1/8 | 5/8 | 3/8 | 1/4 | 1/2 | 1/8 |
| 3/4 | ABB-75 | 1 3/8 | 3/4 | 3/8 | 1/4 | 1/2 | 1/8 |
| 1 | ABB-100 | 1 3/4 | 1 | 1/2 | 3/8 | 5/8 | 1/4 |
| 1 1/4 | ABB-125 | 2 1/8 | 1 1/4 | 1/2 | 3/8 | 3/4 | 1/4 |
| 1 1/2 | ABB-150 | 2 3/8 | 1 1/2 | 1/2 | 3/8 | 3/4 | 1/4 |
| 2 | ABB-200 | 2 7/8 | 2 | 1/2 | 1/2 | 3/4 | 1/4 |
| 2 1/2 | ABB-250 | 3 3/8 | 2 3/8 | 5/8 | 1/2 | 7/8 | 1/4 |
| 3 | ABB-300 | 4 | 3 | 5/8 | 1/2 | 7/8 | 1/4 |
| 3 1/2 | ABB-350 | 4 3/8 | 3 1/2 | 5/8 | 1/2 | 7/8 | 1/4 |
| 4 | ABB-400 | 5 1/8 | 3 7/8 | 5/8 | 1/2 | 7/8 | 1/4 |
| 5 | ABB-500 | 6 1/4 | 4 3/8 | 3/4 | 1/2 | 1 1/8 | 1/4 |
| 6 | ABB-600 | 7 3/8 | 5 1/8 | 3/4 | 1/2 | 1 1/8 | 1/4 |



Type ABB

Applicable Third Party Standards:

- UL Standard: 514B
- CSA Standard: C22.2 No. 18
- Fed. Spec: W-F-408E
- NEMA: FB-1

Insulating Bushings

For Threaded for Rigid Conduit & IMC

Type IB


Feature:

- Temperature rating 105°C

Material:

Polypropylene (gray)

Third Party Certification:

 UL Listed: E-11853

 CSA Certified: 057250

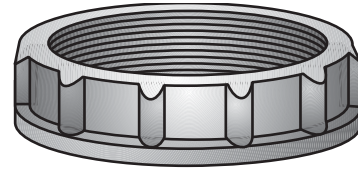
Applicable Third Party Standards:

UL Standard: 514B

CSA Standard: C22.2 No. 18

Fed. Spec: W-F-408E

| Trade Size (inches) | Catalog Number | Dimensions in Inches | |
|------------------------|-------------------|----------------------|-------------|
| | | Max. Dia. | Max. Height |
| 1/2 | IB-50 | 1 1/16 | 3/8 |
| 3/4 | IB-75 | 1 7/16 | 7/16 |
| 1 | IB-100 | 1 9/16 | 9/16 |
| 1 1/4 | IB-125 | 2 | 5/8 |
| 1 1/2 | IB-150 | 2 1/4 | 5/8 |
| 2 | IB-200 | 2 7/8 | 5/8 |
| 2 1/2 | IB-250 | 3 3/8 | 3/4 |
| 3 | IB-300 | 4 1/16 | 3/4 |
| 3 1/2 | IB-350 | 4 3/8 | 7/8 |
| 4 | IB-400 | 5 1/8 | 7/8 |
| 5 | IB-500 | 6 7/16 | 1 |
| 6 | IB-600 | 7 7/16 | 1 |



**Type IB
Threaded**

Type PPC

Use:

To plug bushings, rigid conduit and IMC.

Features:

- Suitable for use on the following bushings: Type A, B, IBC, BB, IB, BLG, HB, HBLG and Type 2-series.

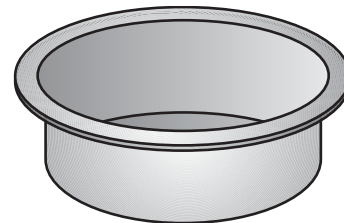
Material:

Polyethylene

Applicable Third Party Standards:

UL Listing not applicable

| Trade Size (inches) | Catalog Number | Dimensions in Inches | |
|------------------------|-------------------|----------------------|-------------|
| | | Max. Dia. | Max. Height |
| 1/2 | PPC-50 | 1 | 9/16 |
| 3/4 | PPC-75 | 1 3/16 | 5/8 |
| 1 | PPC-100 | 1 1/16 | 3/4 |
| 1 1/4 | PPC-125 | 1 5/8 | 3/4 |
| 1 1/2 | PPC-150 | 2 | 3/4 |
| 2 | PPC-200 | 2 1/2 | 3/4 |
| 2 1/2 | PPC-250 | 2 7/8 | 1 1/8 |
| 3 | PPC-300 | 3 3/8 | 7/8 |
| 3 1/2 | PPC-350 | 4 | 1 1/4 |
| 4 | PPC-400 | 4 3/8 | 7/8 |



Type PPC

Insulating Bushings

For Threaded Rigid Conduit & IMC

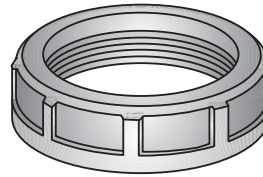
Features:

- High impact black thermosetting phenolic bushings, with at 150°C UL temperature rating, that will not soften, melt or burn.

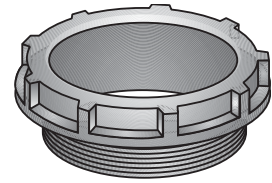
Type A

Use:

To insulate end of threaded rigid and IMC



Type A



Type BB

Third Party Certification:

UL Listed: E-11853

CSA Certified: 11584

Type BB

Use:

To insulate cables passing through metal boxes or troughs

Third Party Certification:

UL Listed: E-20933

CSA Certified: 11584

| Trade Size (inches) | Type A Catalog Number | Dimensions in Inches | |
|---------------------|-----------------------|----------------------|----------------|
| | | Outside Dia. | Overall Height |
| 1/2 | A-50 | 1 1/8 | 1/2 |
| 3/4 | A-75 | 1 3/8 | 1/2 |
| 1 | A-100 | 1 3/4 | 5/8 |
| 1 1/4 | A-125 | 2 1/8 | 3/4 |
| 1 1/2 | A-150 | 2 3/8 | 3/4 |
| 2 | A-200 | 2 7/8 | 3/4 |
| 2 1/2 | A-250 | 3 3/8 | 7/8 |
| 3 | A-300 | 4 | 7/8 |
| 3 1/2 | A-350 | 4 3/8 | 7/8 |
| 4 | A-400 | 5 1/8 | 7/8 |
| 5 | A-500 | 6 1/4 | 1 1/8 |
| 6 | A-600 | 7 3/8 | 1 1/8 |

| Trade Size (inches) | Type BB Catalog Number | Dimensions in Inches | | |
|---------------------|------------------------|----------------------|-------------------|---------------|
| | | Outside Dia. | Bushing Hole Dia. | Thread Length |
| 1/2 | BB-50 | 1 1/8 | 5/8 | 3/8 |
| 3/4 | BB-75 | 1 3/8 | 3/4 | 3/8 |
| 1 | BB-100 | 1 3/4 | 1 | 1/2 |
| 1 1/4 | BB-125 | 2 1/8 | 1 1/4 | 1/2 |
| 1 1/2 | BB-150 | 2 3/8 | 1 1/2 | 1/2 |
| 2 | BB-200 | 2 7/8 | 2 | 1/2 |
| 2 1/2 | BB-250 | 3 3/8 | 2 3/8 | 5/8 |
| 3 | BB-300 | 4 | 3 | 5/8 |
| 3 1/2 | BB-350 | 4 3/8 | 3 1/2 | 5/8 |
| 4 | BB-400 | 5 1/8 | 3 3/8 | 5/8 |
| 5 | BB-500 | 6 1/4 | 4 1/8 | 3/4 |
| 6 | BB-600 | 7 3/8 | 5 1/8 | 3/4 |

Type BBL

Use:

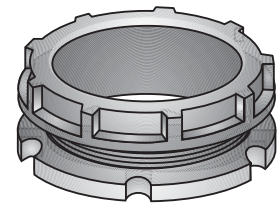
Type BB provided with a steel locknut

Third Party Certification:

UL Listed: E-20933

CSA Certified: 11584

| Trade Size (inches) | Type BBL Catalog Number | Dimensions in Inches | | | Max Dia. |
|---------------------|-------------------------|----------------------|-----------|-----------------------|----------|
| | | Bushing Outside Dia. | Hole Dia. | Locknut Thread Length | |
| 1/2 | BBL-50 | 1 1/8 | 5/8 | 3/8 | 1 1/8 |
| 3/4 | BBL-75 | 1 3/8 | 3/4 | 3/8 | 1 1/2 |
| 1 | BBL-100 | 1 3/4 | 1 | 1/2 | 1 3/4 |
| 1 1/4 | BBL-125 | 2 1/8 | 1 1/4 | 1/2 | 2 1/8 |
| 1 1/2 | BBL-150 | 2 3/8 | 1 1/2 | 1/2 | 2 5/8 |
| 2 | BBL-200 | 2 7/8 | 2 | 1/2 | 3 1/8 |
| 2 1/2 | BBL-250 | 3 3/8 | 2 3/8 | 5/8 | 3 3/8 |
| 3 | BBL-300 | 4 | 3 | 5/8 | 4 3/8 |
| 3 1/2 | BBL-350 | 4 3/8 | 3 1/2 | 5/8 | 5 |
| 4 | BBL-400 | 5 1/8 | 3 7/8 | 5/8 | 5 1/2 |
| 5 | BBL-500 | 6 1/4 | 4 3/8 | 3/4 | 6 1/8 |
| 6 | BBL-600 | 7 3/8 | 5 1/8 | 3/4 | 8 |



Type BBL

Type ABB

Use:

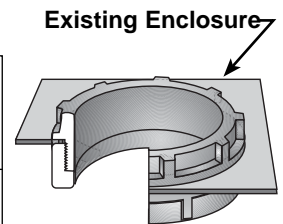
A combination of Type "A" and "BB" Bushings. For insulating cables passing through metal boxes or troughs

Third Party Certification:

UL Listed: E-20933

CSA Certified: 011584

| Trade Size (inches) | Type ABB Catalog Number | Dimensions in Inches | | | | | Max. Encl. Thick |
|---------------------|-------------------------|----------------------|-----------|---------------|--------------------|----------|------------------|
| | | Outside Dia. | Hole Dia. | Thread Length | Shd. Ht. Type "BB" | Type "A" | |
| 1/2 | ABB-50 | 1 1/8 | 5/8 | 3/8 | 1/4 | 1/2 | 1/8 |
| 3/4 | ABB-75 | 1 3/8 | 3/4 | 3/8 | 1/4 | 1/2 | 1/8 |
| 1 | ABB-100 | 1 3/4 | 1 | 1/2 | 3/8 | 5/8 | 1/4 |
| 1 1/4 | ABB-125 | 2 1/8 | 1 1/4 | 1/2 | 3/8 | 3/4 | 1/4 |
| 1 1/2 | ABB-150 | 2 3/8 | 1 1/2 | 1/2 | 3/8 | 3/4 | 1/4 |
| 2 | ABB-200 | 2 7/8 | 2 | 1/2 | 1/2 | 3/4 | 1/4 |
| 2 1/2 | ABB-250 | 3 3/8 | 2 3/8 | 5/8 | 1/2 | 7/8 | 1/4 |
| 3 | ABB-300 | 4 | 3 | 5/8 | 1/2 | 7/8 | 1/4 |
| 3 1/2 | ABB-350 | 4 3/8 | 3 1/2 | 5/8 | 1/2 | 7/8 | 1/4 |
| 4 | ABB-400 | 5 1/8 | 3 7/8 | 5/8 | 1/2 | 7/8 | 1/4 |
| 5 | ABB-500 | 6 1/4 | 4 3/8 | 3/4 | 1/2 | 1 1/8 | 1/4 |
| 6 | ABB-600 | 7 3/8 | 5 1/8 | 3/4 | 1/2 | 1 1/8 | 1/4 |



Type ABB

Applicable Third Party Standards:

- UL Standard: 514B
- CSA Standard: C22.2 No. 18
- Fed. Spec: W-F-408E
- NEMA: FB-1

Insulating Bushings

For Threaded for Rigid Conduit & IMC

Type IB


Feature:

- Temperature rating 105°C

Material:

Polypropylene (gray)

Third Party Certification:

 UL Listed: E-11853

 CSA Certified: 057250

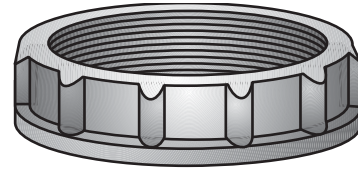
Applicable Third Party Standards:

UL Standard: 514B

CSA Standard: C22.2 No. 18

Fed. Spec: W-F-408E

| Trade Size (inches) | Catalog Number | Dimensions in Inches | |
|------------------------|-------------------|----------------------|-------------|
| | | Max. Dia. | Max. Height |
| 1/2 | IB-50 | 1 1/16 | 3/8 |
| 3/4 | IB-75 | 1 7/16 | 7/16 |
| 1 | IB-100 | 1 9/16 | 9/16 |
| 1 1/4 | IB-125 | 2 | 5/8 |
| 1 1/2 | IB-150 | 2 1/4 | 5/8 |
| 2 | IB-200 | 2 7/8 | 5/8 |
| 2 1/2 | IB-250 | 3 3/8 | 3/4 |
| 3 | IB-300 | 4 1/16 | 3/4 |
| 3 1/2 | IB-350 | 4 3/8 | 7/8 |
| 4 | IB-400 | 5 1/8 | 7/8 |
| 5 | IB-500 | 6 7/16 | 1 |
| 6 | IB-600 | 7 7/16 | 1 |



**Type IB
Threaded**

Type PPC

Use:

To plug bushings, rigid conduit and IMC.

Features:

- Suitable for use on the following bushings: Type A, B, IBC, BB, IB, BLG, HB, HBLG and Type 2-series.

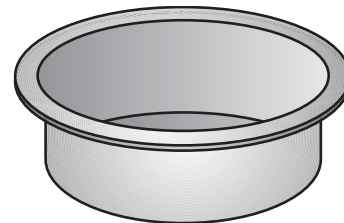
Material:

Polyethylene

Applicable Third Party Standards:

UL Listing not applicable

| Trade Size (inches) | Catalog Number | Dimensions in Inches | |
|------------------------|-------------------|----------------------|-------------|
| | | Max. Dia. | Max. Height |
| 1/2 | PPC-50 | 1 | 9/16 |
| 3/4 | PPC-75 | 1 3/16 | 5/8 |
| 1 | PPC-100 | 1 1/16 | 3/4 |
| 1 1/4 | PPC-125 | 1 5/8 | 3/4 |
| 1 1/2 | PPC-150 | 2 | 3/4 |
| 2 | PPC-200 | 2 1/2 | 3/4 |
| 2 1/2 | PPC-250 | 2 7/8 | 1 1/8 |
| 3 | PPC-300 | 3 3/8 | 7/8 |
| 3 1/2 | PPC-350 | 4 | 1 1/4 |
| 4 | PPC-400 | 4 3/8 | 7/8 |



Type PPC