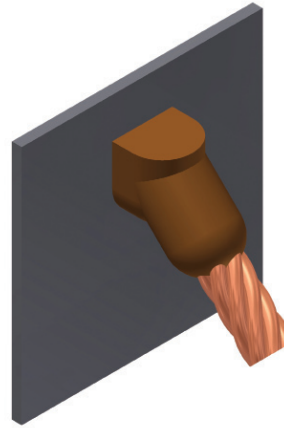


TYPE BCS-3 MOLDS



**Angular Cable Drop to Vertical
Steel Surface**

Type BCS-3 Molds are used to join the end of a copper cable at a 45° angle to a vertical steel surface. Size range is #6 through 1000 kcmil solid or concentric stranded copper conductors. Contact BURNDY® for information on molds for conductors not listed below.



E-99

| Cable Size | Pipe Size | Mold Number | Price Key | Weld Metal | Handle Clamps |
|------------|-----------------|------------------|-----------|------------|---------------|
| #6 | Flat Steel Only | B-585 | 4 | 45 | B-106 |
| #4 | 12" & up | B-586 ① | 4 | 45 | B-106 |
| #3 | Flat Steel Only | B-587 | 4 | 45 | B-106 |
| #2 | 12" & up | B-588 ① | 4 | 45 | B-106 |
| #1 | 12" & up | B-589 ① | 4 | 65 | B-106 |
| 1/0 | 12" & up | B-590 ① | 4 | 90 | B-106 |
| 2/0 | 12" & up | B-591 ① | 4 | 90 | B-106 |
| 3/0 | 12" & up | B-592 ① | 4 | 115 | B-106 |
| 4/0 | 12" & up | B-593 ① | 4 | 115 | B-106 |
| 250 kcmil | Flat Steel Only | B-594 | 4 | 115 | B-106 |
| 300 kcmil | Flat Steel Only | B-595 | 4 | 150 | B-106 |
| 350 kcmil | Flat Steel Only | B-596 | 4 | 200 | B-106 |
| 500 kcmil | Flat Steel Only | B-598 | 4 | 200 | B-106 |
| 750 kcmil | Flat Steel Only | B-599 | 5 | 2-150 | B-106 |
| 1000 kcmil | Flat Steel Only | B-600 | 5 | 2-200 | B-106 |
| #4 | 1-1/4" to 4" | B-2476 | 4 | 45 | B-106 |
| #4 | 4" to 6" | B-2477 | 4 | 45 | B-106 |
| #4 | 6" to 10" | B-2478 | 4 | 45 | B-106 |
| #2 Sol | 1-1/4" to 4" | B-9233-S | 4 | 45 | B-106 |
| #2 Sol | 4" to 6" | B-2480-S | 4 | 45 | B-106 |
| #2 Sol | 6" to 10" | B-2583-S | 4 | 45 | B-106 |
| #2 Sol | 12" & up | B-588-S ① | 4 | 45 | B-106 |
| #2 | 1-1/4" to 4" | B-9233 | 4 | 45 | B-106 |
| #2 | 4" to 6" | B-2480 | 4 | 45 | B-106 |
| #2 | 6" to 10" | B-2583 | 4 | 45 | B-106 |
| #1 | 1-1/4" to 4" | B-2482 | 4 | 65 | B-106 |
| #1 | 4" to 6" | B-2483 | 4 | 65 | B-106 |
| #1 | 6" to 10" | B-2484 | 4 | 65 | B-106 |
| 1/0 | 1-1/4" to 4" | B-2486 | 4 | 90 | B-106 |
| 1/0 | 4" to 6" | B-2487 | 4 | 90 | B-106 |
| 1/0 | 6" to 10" | B-2488 | 4 | 90 | B-106 |

| Cable Size | Pipe Size | Mold Number | Price Key | Weld Metal | Handle Clamps |
|------------|--------------|---------------|-----------|------------|---------------|
| 2/0 | 1-1/4" to 4" | B-8833 | 4 | 90 | B-106 |
| 2/0 | 4" to 6" | B-2490 | 4 | 90 | B-106 |
| 2/0 | 6" to 10" | B-2491 | 4 | 90 | B-106 |
| 3/0 | 1-1/4" to 4" | B-2493 | 4 | 115 | B-106 |
| 3/0 | 4" to 6" | B-2494 | 4 | 115 | B-106 |
| 3/0 | 6" to 10" | B-2495 | 4 | 115 | B-106 |
| 4/0 | 1-1/4" to 4" | B-9021 | 4 | 115 | B-106 |
| 4/0 | 4" to 6" | B-2497 | 4 | 115 | B-106 |
| 4/0 | 6" to 10" | B-2498 | 4 | 115 | B-106 |

① Flat Surface Mold; These items can be used to Flat Steel or to Pipe

NOTES:

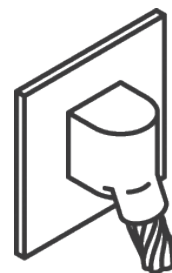
- For sizes not listed, contact BURNDY®
- Molds listed are for concentric stranded cable; add suffix "-S" to mold number for solid conductors
- For heavy duty molds, molds with wear plates or molds for Copperweld® cable, contact BURNDY®
- For expedited service, contact BURNDY®

Required Tools:

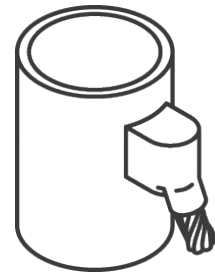
Handle Clamps - see chart for correct handle catalog number

Recommended Accessories:

- B38-0309-00 Flint Ignitor
- B38-3922-00 Mold Cleaning Brush
- B38-0135-00 Cable Cleaning Brush
- B38-0330-00 Cable Clamp



Cable to Flat Steel



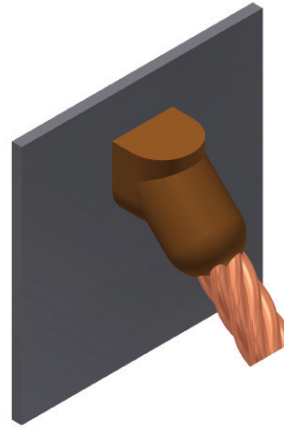
Cable to Pipe

TYPE BCS-3 MOLDS



**Angular Cable Drop to Vertical
Steel Surface**

Type BCS-3 Molds are used to join the end of a copper cable at a 45° angle to a vertical steel surface. Size range is #6 through 1000 kcmil solid or concentric stranded copper conductors. Contact BURNDY® for information on molds for conductors not listed below.



E-99

| Cable Size | Pipe Size | Mold Number | Price Key | Weld Metal | Handle Clamps |
|------------|-----------------|------------------|-----------|------------|---------------|
| #6 | Flat Steel Only | B-585 | 4 | 45 | B-106 |
| #4 | 12" & up | B-586 ① | 4 | 45 | B-106 |
| #3 | Flat Steel Only | B-587 | 4 | 45 | B-106 |
| #2 | 12" & up | B-588 ① | 4 | 45 | B-106 |
| #1 | 12" & up | B-589 ① | 4 | 65 | B-106 |
| 1/0 | 12" & up | B-590 ① | 4 | 90 | B-106 |
| 2/0 | 12" & up | B-591 ① | 4 | 90 | B-106 |
| 3/0 | 12" & up | B-592 ① | 4 | 115 | B-106 |
| 4/0 | 12" & up | B-593 ① | 4 | 115 | B-106 |
| 250 kcmil | Flat Steel Only | B-594 | 4 | 115 | B-106 |
| 300 kcmil | Flat Steel Only | B-595 | 4 | 150 | B-106 |
| 350 kcmil | Flat Steel Only | B-596 | 4 | 200 | B-106 |
| 500 kcmil | Flat Steel Only | B-598 | 4 | 200 | B-106 |
| 750 kcmil | Flat Steel Only | B-599 | 5 | 2-150 | B-106 |
| 1000 kcmil | Flat Steel Only | B-600 | 5 | 2-200 | B-106 |
| #4 | 1-1/4" to 4" | B-2476 | 4 | 45 | B-106 |
| #4 | 4" to 6" | B-2477 | 4 | 45 | B-106 |
| #4 | 6" to 10" | B-2478 | 4 | 45 | B-106 |
| #2 Sol | 1-1/4" to 4" | B-9233-S | 4 | 45 | B-106 |
| #2 Sol | 4" to 6" | B-2480-S | 4 | 45 | B-106 |
| #2 Sol | 6" to 10" | B-2583-S | 4 | 45 | B-106 |
| #2 Sol | 12" & up | B-588-S ① | 4 | 45 | B-106 |
| #2 | 1-1/4" to 4" | B-9233 | 4 | 45 | B-106 |
| #2 | 4" to 6" | B-2480 | 4 | 45 | B-106 |
| #2 | 6" to 10" | B-2583 | 4 | 45 | B-106 |
| #1 | 1-1/4" to 4" | B-2482 | 4 | 65 | B-106 |
| #1 | 4" to 6" | B-2483 | 4 | 65 | B-106 |
| #1 | 6" to 10" | B-2484 | 4 | 65 | B-106 |
| 1/0 | 1-1/4" to 4" | B-2486 | 4 | 90 | B-106 |
| 1/0 | 4" to 6" | B-2487 | 4 | 90 | B-106 |
| 1/0 | 6" to 10" | B-2488 | 4 | 90 | B-106 |

| Cable Size | Pipe Size | Mold Number | Price Key | Weld Metal | Handle Clamps |
|------------|--------------|---------------|-----------|------------|---------------|
| 2/0 | 1-1/4" to 4" | B-8833 | 4 | 90 | B-106 |
| 2/0 | 4" to 6" | B-2490 | 4 | 90 | B-106 |
| 2/0 | 6" to 10" | B-2491 | 4 | 90 | B-106 |
| 3/0 | 1-1/4" to 4" | B-2493 | 4 | 115 | B-106 |
| 3/0 | 4" to 6" | B-2494 | 4 | 115 | B-106 |
| 3/0 | 6" to 10" | B-2495 | 4 | 115 | B-106 |
| 4/0 | 1-1/4" to 4" | B-9021 | 4 | 115 | B-106 |
| 4/0 | 4" to 6" | B-2497 | 4 | 115 | B-106 |
| 4/0 | 6" to 10" | B-2498 | 4 | 115 | B-106 |

① Flat Surface Mold; These items can be used to Flat Steel or to Pipe

NOTES:

- For sizes not listed, contact BURNDY®
- Molds listed are for concentric stranded cable; add suffix "-S" to mold number for solid conductors
- For heavy duty molds, molds with wear plates or molds for Copperweld® cable, contact BURNDY®
- For expedited service, contact BURNDY®

Required Tools:

Handle Clamps - see chart for correct handle catalog number

Recommended Accessories:

- B38-0309-00 Flint Ignitor
- B38-3922-00 Mold Cleaning Brush
- B38-0135-00 Cable Cleaning Brush
- B38-0330-00 Cable Clamp



Cable to Flat Steel



Cable to Pipe