

## Stainless Steel Fittings

Most fittings, as shown in this catalog, can be supplied in Type 304 or Type 316 stainless steel. See "Fittings" section (page 73) of this catalog.

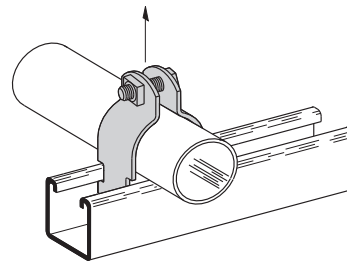
Consult factory for possible minimum production quantities and set-up charges.

### B2000 Series Pipe & Tubing Clamps

- Safety Factor of 5
- Combination Recess Hex Head Machine Screw and Square Nut included
- Material: Stainless Steel Type 304 & 316

Part No.	Conduit or Pipe Size		Material Thickness		Design Load		Wt./C	
	in.	mm	in.	mm	Lbs.	kN	Lbs.	kg
<b>B2001 SS4</b>	3/8"	(10)	16 Ga.	(1.5)	400	(1.78)	10	(4.5)
<b>B2008 SS4</b>	1/2"	(15)	16 Ga.	(1.5)	400	(1.78)	11	(5.0)
<b>B2009 SS4</b>	3/4"	(20)	14 Ga.	(1.9)	600	(2.67)	15	(6.8)
<b>B2010 SS4</b>	1"	(25)	14 Ga.	(1.9)	600	(2.67)	16	(7.2)
<b>B2011 SS4</b>	1 1/4"	(32)	14 Ga.	(1.9)	600	(2.67)	20	(9.1)
<b>B2012 SS4</b>	1 1/2"	(40)	12 Ga.	(2.6)	800	(3.56)	30	(13.6)
<b>B2013 SS4</b>	2"	(50)	12 Ga.	(2.6)	800	(3.56)	34	(15.4)
<b>B2014 SS4</b>	2 1/2"	(65)	12 Ga.	(2.6)	800	(3.56)	38	(17.2)
<b>B2015 SS4</b>	3"	(80)	12 Ga.	(2.6)	800	(3.56)	44	(19.9)
<b>B2016 SS4</b>	3 1/2"	(90)	12 Ga.	(2.6)	1000	(4.45)	51	(23.1)
<b>B2017 SS4</b>	4"	(100)	12 Ga.	(2.6)	1000	(4.45)	55	(24.9)
<b>B2018 SS4</b>	4 1/2"	(115)	12 Ga.	(2.6)	1000	(4.45)	59	(26.7)
<b>B2019 SS4</b>	5"	(125)	12 Ga.	(2.6)	1000	(4.45)	64	(29.0)
<b>B2020 SS4</b>	6"	(150)	12 Ga.	(2.6)	1000	(4.45)	80	(36.3)

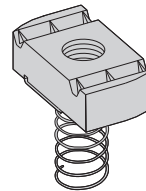
Design Load



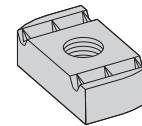
### Channel Nuts

- For Channel Nuts pull-out strength and slip resistance, use the data shown on pages 50 & 51.

Note: Reduce slip load by 50% due to hardness of material.



Spring Nut



Nut Without Spring

### Nuts for B22, B24, B32 Channels

Part Number		Thread Size	Thickness		Wt./C	
With Spring	Without Spring		in.	mm	Lbs.	kg
<b>N224SS6</b>	<b>N224WOSS6</b>	1/4"-20	1/4"	(6.3)	6.6	(3.0)
<b>N228SS6</b>	<b>N228WOSS6</b>	3/8"-16	3/8"	(9.5)	10.6	(4.8)
<b>N225SS6</b>	<b>N225WOSS6</b>	1/2"-13	3/8"	(9.5)	9.7	(4.4)

### Nuts for B42, B52, B54 Channels

Part Number		Thread Size	Thickness		Wt./C	
With Spring	Without Spring		in.	mm	Lbs.	kg
<b>N524SS6</b>	<b>N224WOSS6</b>	1/4"-20	1/4"	(6.3)	6.6	(3.0)
<b>N528SS6</b>	<b>N228WOSS6</b>	3/8"-16	3/8"	(9.5)	10.6	(4.8)
<b>N525SS6</b>	<b>N225WOSS6</b>	1/2"-13	3/8"	(9.5)	9.7	(4.4)

Reference page 177 for general fitting specifications. Other channel combinations available-see steel section for styles.

## Stainless Steel Fittings

Most fittings, as shown in this catalog, can be supplied in Type 304 or Type 316 stainless steel. See "Fittings" section (page 73) of this catalog.

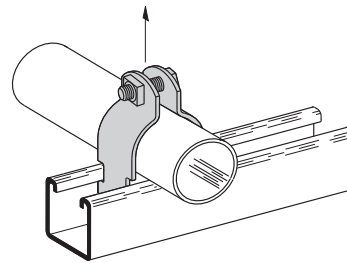
Consult factory for possible minimum production quantities and set-up charges.

### B2000 Series Pipe & Tubing Clamps

- Safety Factor of 5
- Combination Recess Hex Head Machine Screw and Square Nut included
- Material: Stainless Steel Type 304 & 316

Part No.	Conduit or Pipe Size		Material Thickness		Design Load		Wt./C	
	in.	mm	in.	mm	Lbs.	kN	Lbs.	kg
<b>B2001 SS4</b>	3/8"	(10)	16 Ga.	(1.5)	400	(1.78)	10	(4.5)
<b>B2008 SS4</b>	1/2"	(15)	16 Ga.	(1.5)	400	(1.78)	11	(5.0)
<b>B2009 SS4</b>	3/4"	(20)	14 Ga.	(1.9)	600	(2.67)	15	(6.8)
<b>B2010 SS4</b>	1"	(25)	14 Ga.	(1.9)	600	(2.67)	16	(7.2)
<b>B2011 SS4</b>	1 1/4"	(32)	14 Ga.	(1.9)	600	(2.67)	20	(9.1)
<b>B2012 SS4</b>	1 1/2"	(40)	12 Ga.	(2.6)	800	(3.56)	30	(13.6)
<b>B2013 SS4</b>	2"	(50)	12 Ga.	(2.6)	800	(3.56)	34	(15.4)
<b>B2014 SS4</b>	2 1/2"	(65)	12 Ga.	(2.6)	800	(3.56)	38	(17.2)
<b>B2015 SS4</b>	3"	(80)	12 Ga.	(2.6)	800	(3.56)	44	(19.9)
<b>B2016 SS4</b>	3 1/2"	(90)	12 Ga.	(2.6)	1000	(4.45)	51	(23.1)
<b>B2017 SS4</b>	4"	(100)	12 Ga.	(2.6)	1000	(4.45)	55	(24.9)
<b>B2018 SS4</b>	4 1/2"	(115)	12 Ga.	(2.6)	1000	(4.45)	59	(26.7)
<b>B2019 SS4</b>	5"	(125)	12 Ga.	(2.6)	1000	(4.45)	64	(29.0)
<b>B2020 SS4</b>	6"	(150)	12 Ga.	(2.6)	1000	(4.45)	80	(36.3)

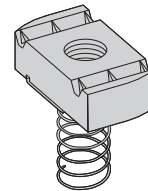
Design Load



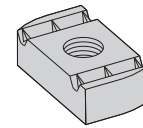
### Channel Nuts

- For Channel Nuts pull-out strength and slip resistance, use the data shown on pages 50 & 51.

Note: Reduce slip load by 50% due to hardness of material.



Spring Nut



Nut Without Spring

### Nuts for B22, B24, B32 Channels

Part Number		Thread Size	Thickness		Wt./C	
With Spring	Without Spring		in.	mm	Lbs.	kg
<b>N224SS6</b>	<b>N224WOSS6</b>	1/4"-20	1/4"	(6.3)	6.6	(3.0)
<b>N228SS6</b>	<b>N228WOSS6</b>	3/8"-16	3/8"	(9.5)	10.6	(4.8)
<b>N225SS6</b>	<b>N225WOSS6</b>	1/2"-13	3/8"	(9.5)	9.7	(4.4)

### Nuts for B42, B52, B54 Channels

Part Number		Thread Size	Thickness		Wt./C	
With Spring	Without Spring		in.	mm	Lbs.	kg
<b>N524SS6</b>	<b>N224WOSS6</b>	1/4"-20	1/4"	(6.3)	6.6	(3.0)
<b>N528SS6</b>	<b>N228WOSS6</b>	3/8"-16	3/8"	(9.5)	10.6	(4.8)
<b>N525SS6</b>	<b>N225WOSS6</b>	1/2"-13	3/8"	(9.5)	9.7	(4.4)

Reference page 177 for general fitting specifications. Other channel combinations available-see steel section for styles.