
BROCHURE

Cable Tray Solutions

Taking cable above and beyond



Cable tray solutions

Taking cable above and beyond

T&B® Cable Tray offers significant advantages over conduit pipe and other wiring systems. Cable tray is more cost efficient, more reliable, more adaptable to changing needs and easier to maintain.

ABW-6-SSP—Snap-in Splice Plate

- Designed to lock into place for easy alignment and installation
- Packaged in pairs with necessary hardware
- Provided with corresponding quantities to straight sections and fittings

ABW46-0SS-B—Over-Support Splice Adapter

- Used with standard splice plate where supports are placed directly under joints
- Allows a wider distribution of support
- Minimizes stress and deflection at joints

ABW6SDP—Super Duty Splice Plate

- Reduces material and labor costs by using fewer NEMA-recommended structural supports
- Allows for expansion/contraction under full loads
- Unique, reinforced design eliminates need to drill and anchor to flange during installation
- Nylon washers included with hardware reduce friction and need for maintenance
- Plate is pre-drilled for both expansion and mid-span applications

AH46-24-L12-144—Aluminum Straight Section

- Extra-wide aluminum rungs are welded to extruded aluminum I-beam side rails
- Strut rung design allows for easy fastening of cables to rungs with cable ties or clamps
- Alternating rungs allow easy top or bottom mounting of cables
- Fabricated using 6063 aluminum alloy
- Four-bolt connection provides electrical continuity to the system with minimal hardware

AHF-6-24-L-HB90-24—Aluminum 90° Horizontal Bend-H-style

- H-style design improves system rigidity and aesthetics
- Standard snap-in splice plate holds fitting in place during hardware installation
- 3 inch (76mm) tangents on all fittings (steel and aluminum)

SP36-24-L12—Steel Straight Section

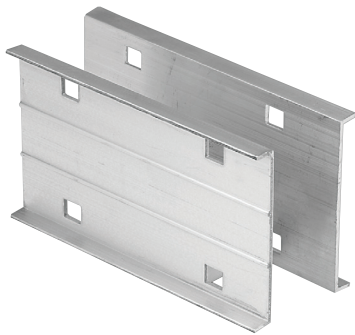
SPF-6-24-L-HB90-24—Steel 90° Horizontal Bends

- Roll-formed side rails optimize strength to weight ratio
- Strut rung design allows for easy fastening of cables to rungs with cable ties or clamps
- Alternating rungs allow easy top or bottom mounting of cables
- Four-bolt connection provides electrical continuity to the system with minimal hardware

SSF612LHVR—Helix Cable Tray Fitting

- Supports cable transition from horizontal to vertical applications
- Provides enhanced cable protection in confined spaces
- Convenient right- or left-turn configuration

01 ABW-6-SSP—
Snap-in Splice Plate



—
01

02 ABW46-0SS-B— Over-
Support Splice Adapter



—
02

03 ABW6SDP—Super
Duty Splice Plate



—
03

04 AH46-24-L12-144—
Aluminum Straight
Section



—
04

05 AHF-6-24-L-HB90-24—
Aluminum 90° Horizontal
Bend-H-style



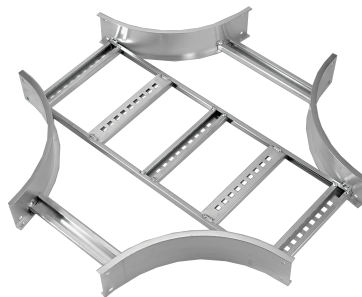
—
05

06 SP36-24-L12—Steel
Straight Section



—
06

07 SPF6-24-L-HX-24—
Steel Horizontal Crosses



—
07

08 SPF-6-24-L-HB90-24—
Steel 90° Horizontal Bend



—
08

09 SSF612LHVR—Helix
Cable Tray Fitting



—
09

—
abb.com/low-voltage

Scan code to learn more about Cable Tray

