



Fluorescent Lamps

Shat-R-Shield fluorescent lamps are coated from end-to-end with our exclusive, patented plastic coating. If a Shat-R-Shield lamp is dropped or broken, virtually all glass, phosphors and mercury are safely contained within the coating. Our coating reduces light output by less than 1% and is a minimum of 16 mils thick. Shat-R-Shield lamps are UL & NSF Certified, USDA approved, and meet FDA and OSHA standards. Lamps should not be installed in areas where ambient temperatures exceed 120°F. Shat-R-Shield linear fluorescent lamps are available in various wattages, colors and Kelvin temperatures, including T5, T8 & T12 sizes. Shat-R-Shield also offers many fluorescent lamps in ultraviolet (UV) blocking versions.

STANDARD -

In full wattage, energy-saving, preheat, rapid start & instant start linear versions.

HIGH OUTPUT (HO) -

Shat-R-Shield HO fluorescent lamps for non-refrigerated areas combine the heat-resistant properties of DuPont Teflon® with the strength of our highly-specialized coating (Refrigerated & Non-Refrigerated Areas).

VERY HIGH OUTPUT (VHO) -

Shat-R-Shield's plastics can reliably withstand the extreme temperatures emitted by a VHO fluorescent lamp (Refrigerated, Non-Refrigerated & Freezer Areas).

U-SHAPED -

The safest choice for 2' x 2' luminaries. These lamps can provide the same light output as a linear lamp of twice the length.

REDUCED MERCURY LAMPS -

With the lowest mercury content on the market, these lamps are manufactured to meet the Toxic Characteristic Leaching Procedure (TCLP) standards established by the U.S. EPA.

BLACK LIGHT & BLACK LIGHT BLUE -

Shat-R-Shield's black light coating utilizes ultraviolet stabilizers to prevent degradation of the coating while also allowing critical ultra-wavelengths to pass through for maximum insect control.

GOLD LAMPS -

These lamps block all ultraviolet and plus light emissions up to 530 nms. They are ideal for use in cleanroom environments, microchip production and all other photosensitive applications.

UV / GERMICIDAL LAMPS -

These lamps destroy microbes such as bacteria, viruses, molds and spores with high-output ultraviolet (UV-C) radiation. Germicidal lamps are perfect for use in HVAC and water treatment systems. This popular and effective method of decontamination is a physical process eliminating the need for toxic chemicals.



T12 Plastic-Coated, Shatter-Resistant Fluorescent Lamps

Energy-Saving High Output (800ma) T12 Fluorescent Lamps Recessed Double Contact (RDC) *Teflon®/Shat-R-Kote® Combination (HO/TSC)* **RECOMMENDED FOR OPEN FIXTURES ONLY**

| Nominal Lamp Watts | UPC/ Catalog Order# | Ordering Description | Std. Pkg. Qty. | Lamp Description | Nominal Length (Inches) | Avg. Life (Hours) | Mean Lumens |
|--------------------|---------------------|--------------------------|----------------|------------------|-------------------------|-------------------|-------------|
| 95 | ⓔ \$ 62015 | F96T12/CW/HO/ES/TSC | 15 | COOL WHITE | 96 | 12,000 | 6,950 |
| | ⓔ \$ 62017 | F96T12/CW/HO/ES/ALTO/TSC | 15 | COOL WHITE | 96 | 12,000 | 6,950 |
| | \$ 62025 | F96T12/DX/HO/ES/TSC | 15 | DAYLIGHT DELUXE | 96 | 12,000 | 5,000 |

Teflon®/Shat-R-Kote® Combination (HO/TSC) - HO/TSC lamps combine the high heat-resistant properties of Teflon® with the strength and cost-effectiveness of Shat-R-Kote®. These lamps can be used anywhere high output (800ma) lamps are normally used, however, **HO/TSC lamps are recommended for open fixtures only.** HO/TSC lamps may not operate efficiently in refrigerated areas. For refrigerator applications below 45°F, see our HO/R lamp category.

High Output (800ma) T12 Fluorescent Lamps Recessed Double Contact (RDC) *For Refrigerated Areas Only (HO/R)*

| Nominal Lamp Watts | UPC/ Catalog Order# | Ordering Description | Std. Pkg. Qty. | Lamp Description | Nominal Length (Inches) | Avg. Life (Hours) | Mean Lumens |
|--------------------|---------------------|----------------------|----------------|-------------------|-------------------------|-------------------|-------------|
| 60 | 57016 | F48T12/CW/HO/ALTO/R | 30 | COOL WHITE | 48 | 12,000 | 3,500 |
| | 57022 | F48T12/D/HO/R | 30 | DAYLIGHT | 48 | 12,000 | 3,000 |
| 75 | 58012 | F60T12/CW/HO/R | 15 | COOL WHITE | 60 | 12,000 | 4,500 |
| | 58022 | F60T12/D/HO/R | 15 | DAYLIGHT | 60 | 12,000 | 4,050 |
| 85 | 60012 | F72T12/CW/HO/ALTO/R | 15 | COOL WHITE | 72 | 12,000 | 5,500 |
| | 60022 | F72T12/D/HO/ALTO/R | 15 | DAYLIGHT | 72 | 12,000 | 4,850 |
| 110 | 62012 | F96T12/CW/HO/R | 15 | COOL WHITE | 96 | 12,000 | 7,650 |
| | 62042 | F96T12/CWX/HO/R | 15 | COOL WHITE DELUXE | 96 | 12,000 | 5,500 |
| | 62026 | F96T12/D/HO/ALTO/R | 15 | DAYLIGHT | 96 | 12,000 | 6,800 |

Energy-Saving High Output (800ma) T12 Fluorescent Lamps Recessed Double Contact (RDC) *For Refrigerated Areas Only (HO/R)*

| Nominal Lamp Watts | UPC/ Catalog Order# | Ordering Description | Std. Pkg. Qty. | Lamp Description | Nominal Length (Inches) | Avg. Life (Hours) | Mean Lumens |
|--------------------|---------------------|------------------------|----------------|------------------|-------------------------|-------------------|-------------|
| 95 | ⓔ \$ 62014 | F96T12/CW/HO/ES/R | 15 | COOL WHITE | 96 | 12,000 | 6,950 |
| | ⓔ \$ 62016 | F96T12/CW/HO/ES/ALTO/R | 15 | COOL WHITE | 96 | 12,000 | 6,950 |
| | \$ 62024 | F96T12/DX/HO/ES/R | 15 | DAYLIGHT DELUXE | 96 | 12,000 | 5,000 |

For Refrigerated Areas Only (HO/R) - Due to the high heat created at the cathode ends, any use of these lamps in conditions above 45°F may cause deterioration of the protective Shat-R-Kote® coating. **HO/R lamps are for use in refrigerated areas where ambient temperatures do not exceed 45°F.** Conversely, HO/R lamps used in freezing temperatures will not operate efficiently, coated or uncoated. Because Shat-R-Shield has no control over the temperature range in the areas in which the lamps are operated, their performance cannot be guaranteed. However, HO/R lamps are being used with apparent success and should be expected to perform as well as other Shat-R-Shield lamps.

- \$ – Energy-Saving Product
 - ⓔ – This bulb meets U.S. Federal minimum efficiency standards.
 - ALTO® – Reduced Mercury Lamps
 - – Features ALTO® Lamp Technology
- Footnotes located on page 28

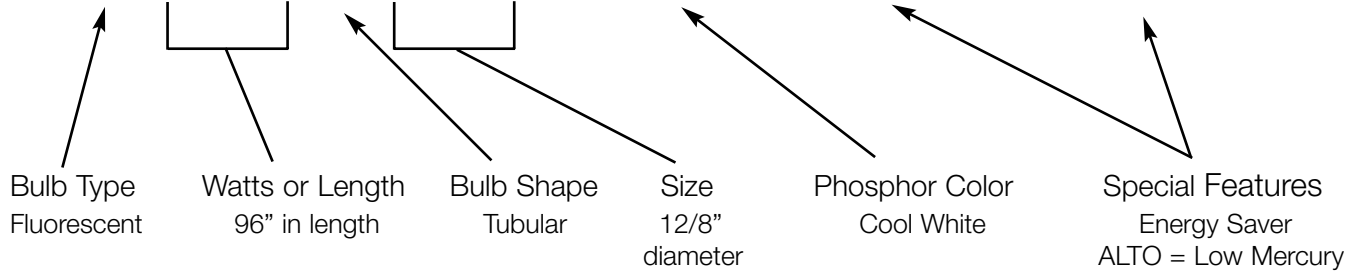
NOTE – Energy-Saving lamps are not intended for use in ambient temperatures below 60°F, in drafty locations, on low power factor ballasts, reduced current and light output ballasts, dimming ballasts, or on inventor powered emergency lighting systems. (3)



Shat-R-Shield Fluorescents
Performance
Plus Protection

Shat-R-Shield Fluorescents

F96T12/CW/ES/ALTO



LINEAR FLUORESCENT BULB TYPES - in lengths and wattage

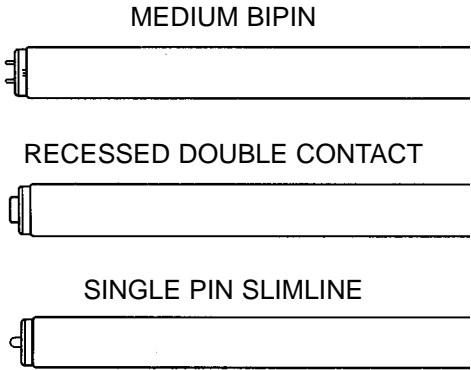
| Bulb Type | Length | Wattage |
|-----------|--------------|--|
| F6 | 9" in length | 6 watts |
| F8 | 12" | 8 watts |
| F14 | 15" | 14 watts |
| F15 | 18" | 15 watts |
| F17 | 24" | 17 watts |
| F20 | 24" | 20 watts |
| F24 | 24" | 20 or 35 watts |
| F25 | 33" or 36" | 25 watts |
| F28 | 46" | 28 watts |
| F30 | 36" | 30 or 40 watts |
| F32 | 48" | 32 watts |
| F34 | 48" | 34 watts |
| F35 | 58" | 35 watts |
| F36 | 36" | 30 or 50 watts |
| F40 | 48" or 60" | 34 or 40 watts |
| F42 | 42" | 35 or 55 watts |
| F48 | 48" (4 ft.) | 30 or 39 or 60 or 110 watts |
| F60 | 60" | 50 or 75 or 135 watts |
| F64 | 64" | 51 or 80 watts |
| F72 | 72" | 56 or 85 or 160 watts |
| F84 | 84" | 95 watts |
| F96 | 96" (8 ft.) | 59 or 60 or 75 or 86 or 95 or 110 or 185 watts |

BULB SIZE (diameter)

T5 = 5/8" diameter

T8 = 8/8" (or 1 inch)

T12 = 12/8" (or 1 and 1/2 inches)



| Lamp Description | Designation | Atmosphere | Color Rendering Index (CRI) | Kelvin Color Temperature |
|-------------------|-------------|------------|-----------------------------|--------------------------|
| Cool White | CW | Cool | 62 | 4100 |
| Cool White Deluxe | CWX | Cool | 89 | 4200 |
| Daylight | D | Daylight | 79 | 6500 |
| Lite-White | LW | Cool | 51 | 4100 |
| White | W | Neutral | 58 | 3500 |
| Warm White | WW | Warm | 53 | 3000 |
| Warm White Deluxe | WWX | Warm | 79 | 3000 |
| Natural | N | Warm | 81 | 3400 |
| Colortone 50 | C50 | Daylight | 92 | 5000 |
| Colortone 75 | C75 | Daylight | 95 | 7500 |
| SPEC 30 | Spec 30 | Warm | 70 | 3000 |
| SPEC 35 | Spec 35 | Neutral | 73 | 3500 |
| SPEC 41 | Spec 41 | Cool | 70 | 4100 |
| Ultralume 30 | 30U | Warm | 85 | 3000 |
| Ultralume 35 | 35U | Neutral | 85 | 3500 |
| Ultralume 41 | 41U | Cool | 85 | 4100 |

Color Selection Guide



Fluorescent Lamps

Shat-R-Shield fluorescent lamps are coated from end-to-end with our exclusive, patented plastic coating. If a Shat-R-Shield lamp is dropped or broken, virtually all glass, phosphors and mercury are safely contained within the coating. Our coating reduces light output by less than 1% and is a minimum of 16 mils thick. Shat-R-Shield lamps are UL & NSF Certified, USDA approved, and meet FDA and OSHA standards. Lamps should not be installed in areas where ambient temperatures exceed 120°F. Shat-R-Shield linear fluorescent lamps are available in various wattages, colors and Kelvin temperatures, including T5, T8 & T12 sizes. Shat-R-Shield also offers many fluorescent lamps in ultraviolet (UV) blocking versions.

STANDARD -

In full wattage, energy-saving, preheat, rapid start & instant start linear versions.

HIGH OUTPUT (HO) -

Shat-R-Shield HO fluorescent lamps for non-refrigerated areas combine the heat-resistant properties of DuPont Teflon® with the strength of our highly-specialized coating (Refrigerated & Non-Refrigerated Areas).

VERY HIGH OUTPUT (VHO) -

Shat-R-Shield's plastics can reliably withstand the extreme temperatures emitted by a VHO fluorescent lamp (Refrigerated, Non-Refrigerated & Freezer Areas).

U-SHAPED -

The safest choice for 2' x 2' luminaries. These lamps can provide the same light output as a linear lamp of twice the length.

REDUCED MERCURY LAMPS -

With the lowest mercury content on the market, these lamps are manufactured to meet the Toxic Characteristic Leaching Procedure (TCLP) standards established by the U.S. EPA.

BLACK LIGHT & BLACK LIGHT BLUE -

Shat-R-Shield's black light coating utilizes ultraviolet stabilizers to prevent degradation of the coating while also allowing critical ultra-wavelengths to pass through for maximum insect control.

GOLD LAMPS -

These lamps block all ultraviolet and plus light emissions up to 530 nms. They are ideal for use in cleanroom environments, microchip production and all other photosensitive applications.

UV / GERMICIDAL LAMPS -

These lamps destroy microbes such as bacteria, viruses, molds and spores with high-output ultraviolet (UV-C) radiation. Germicidal lamps are perfect for use in HVAC and water treatment systems. This popular and effective method of decontamination is a physical process eliminating the need for toxic chemicals.



T12 Plastic-Coated, Shatter-Resistant Fluorescent Lamps

Energy-Saving High Output (800ma) T12 Fluorescent Lamps Recessed Double Contact (RDC) *Teflon®/Shat-R-Kote® Combination (HO/TSC)* **RECOMMENDED FOR OPEN FIXTURES ONLY**

| Nominal Lamp Watts | UPC/ Catalog Order# | Ordering Description | Std. Pkg. Qty. | Lamp Description | Nominal Length (Inches) | Avg. Life (Hours) | Mean Lumens |
|--------------------|---------------------|--------------------------|----------------|------------------|-------------------------|-------------------|-------------|
| 95 | ⓔ \$ 62015 | F96T12/CW/HO/ES/TSC | 15 | COOL WHITE | 96 | 12,000 | 6,950 |
| | ⓔ \$ 62017 | F96T12/CW/HO/ES/ALTO/TSC | 15 | COOL WHITE | 96 | 12,000 | 6,950 |
| | \$ 62025 | F96T12/DX/HO/ES/TSC | 15 | DAYLIGHT DELUXE | 96 | 12,000 | 5,000 |

Teflon®/Shat-R-Kote® Combination (HO/TSC) - HO/TSC lamps combine the high heat-resistant properties of Teflon® with the strength and cost-effectiveness of Shat-R-Kote®. These lamps can be used anywhere high output (800ma) lamps are normally used, however, **HO/TSC lamps are recommended for open fixtures only.** HO/TSC lamps may not operate efficiently in refrigerated areas. For refrigerator applications below 45°F, see our HO/R lamp category.

High Output (800ma) T12 Fluorescent Lamps Recessed Double Contact (RDC) *For Refrigerated Areas Only (HO/R)*

| Nominal Lamp Watts | UPC/ Catalog Order# | Ordering Description | Std. Pkg. Qty. | Lamp Description | Nominal Length (Inches) | Avg. Life (Hours) | Mean Lumens |
|--------------------|---------------------|----------------------|----------------|-------------------|-------------------------|-------------------|-------------|
| 60 | 57016 | F48T12/CW/HO/ALTO/R | 30 | COOL WHITE | 48 | 12,000 | 3,500 |
| | 57022 | F48T12/D/HO/R | 30 | DAYLIGHT | 48 | 12,000 | 3,000 |
| 75 | 58012 | F60T12/CW/HO/R | 15 | COOL WHITE | 60 | 12,000 | 4,500 |
| | 58022 | F60T12/D/HO/R | 15 | DAYLIGHT | 60 | 12,000 | 4,050 |
| 85 | 60012 | F72T12/CW/HO/ALTO/R | 15 | COOL WHITE | 72 | 12,000 | 5,500 |
| | 60022 | F72T12/D/HO/ALTO/R | 15 | DAYLIGHT | 72 | 12,000 | 4,850 |
| 110 | 62012 | F96T12/CW/HO/R | 15 | COOL WHITE | 96 | 12,000 | 7,650 |
| | 62042 | F96T12/CWX/HO/R | 15 | COOL WHITE DELUXE | 96 | 12,000 | 5,500 |
| | 62026 | F96T12/D/HO/ALTO/R | 15 | DAYLIGHT | 96 | 12,000 | 6,800 |

Energy-Saving High Output (800ma) T12 Fluorescent Lamps Recessed Double Contact (RDC) *For Refrigerated Areas Only (HO/R)*

| Nominal Lamp Watts | UPC/ Catalog Order# | Ordering Description | Std. Pkg. Qty. | Lamp Description | Nominal Length (Inches) | Avg. Life (Hours) | Mean Lumens |
|--------------------|---------------------|------------------------|----------------|------------------|-------------------------|-------------------|-------------|
| 95 | ⓔ \$ 62014 | F96T12/CW/HO/ES/R | 15 | COOL WHITE | 96 | 12,000 | 6,950 |
| | ⓔ \$ 62016 | F96T12/CW/HO/ES/ALTO/R | 15 | COOL WHITE | 96 | 12,000 | 6,950 |
| | \$ 62024 | F96T12/DX/HO/ES/R | 15 | DAYLIGHT DELUXE | 96 | 12,000 | 5,000 |

For Refrigerated Areas Only (HO/R) - Due to the high heat created at the cathode ends, any use of these lamps in conditions above 45°F may cause deterioration of the protective Shat-R-Kote® coating. **HO/R lamps are for use in refrigerated areas where ambient temperatures do not exceed 45°F.** Conversely, HO/R lamps used in freezing temperatures will not operate efficiently, coated or uncoated. Because Shat-R-Shield has no control over the temperature range in the areas in which the lamps are operated, their performance cannot be guaranteed. However, HO/R lamps are being used with apparent success and should be expected to perform as well as other Shat-R-Shield lamps.

- \$ – Energy-Saving Product
 - ⓔ – This bulb meets U.S. Federal minimum efficiency standards.
 - ALTO® – Reduced Mercury Lamps
 - – Features ALTO® Lamp Technology
- Footnotes located on page 28

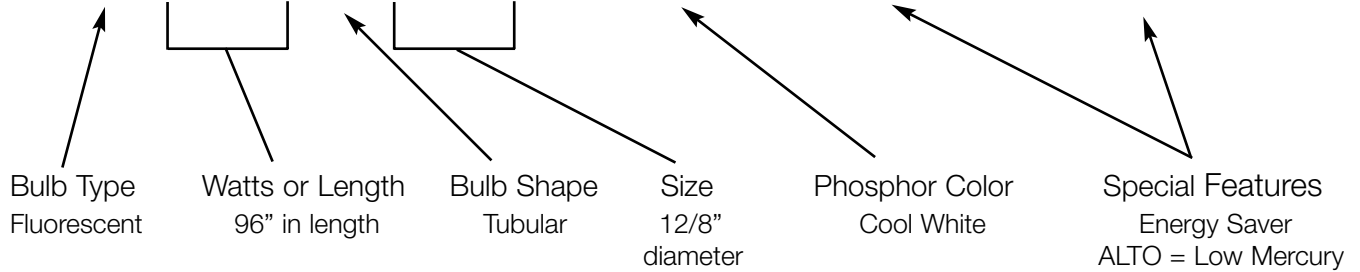
NOTE – Energy-Saving lamps are not intended for use in ambient temperatures below 60°F, in drafty locations, on low power factor ballasts, reduced current and light output ballasts, dimming ballasts, or on inventor powered emergency lighting systems. (3)



Shat-R-Shield Fluorescents
 Performance
 Plus Protection

Shat-R-Shield Fluorescents

F96T12/CW/ES/ALTO



LINEAR FLUORESCENT BULB TYPES - in lengths and wattage

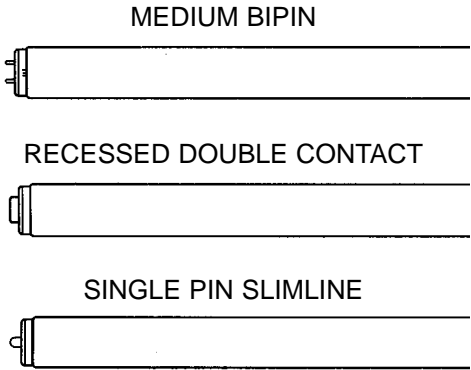
| Bulb Type | Length | Wattage |
|-----------|--------------|--|
| F6 | 9" in length | 6 watts |
| F8 | 12" | 8 watts |
| F14 | 15" | 14 watts |
| F15 | 18" | 15 watts |
| F17 | 24" | 17 watts |
| F20 | 24" | 20 watts |
| F24 | 24" | 20 or 35 watts |
| F25 | 33" or 36" | 25 watts |
| F28 | 46" | 28 watts |
| F30 | 36" | 30 or 40 watts |
| F32 | 48" | 32 watts |
| F34 | 48" | 34 watts |
| F35 | 58" | 35 watts |
| F36 | 36" | 30 or 50 watts |
| F40 | 48" or 60" | 34 or 40 watts |
| F42 | 42" | 35 or 55 watts |
| F48 | 48" (4 ft.) | 30 or 39 or 60 or 110 watts |
| F60 | 60" | 50 or 75 or 135 watts |
| F64 | 64" | 51 or 80 watts |
| F72 | 72" | 56 or 85 or 160 watts |
| F84 | 84" | 95 watts |
| F96 | 96" (8 ft.) | 59 or 60 or 75 or 86 or 95 or 110 or 185 watts |

BULB SIZE (diameter)

T5 = 5/8" diameter

T8 = 8/8" (or 1 inch)

T12 = 12/8" (or 1 and 1/2 inches)



| Lamp Description | Designation | Atmosphere | Color Rendering Index (CRI) | Kelvin Color Temperature |
|-------------------|-------------|------------|-----------------------------|--------------------------|
| Cool White | CW | Cool | 62 | 4100 |
| Cool White Deluxe | CWX | Cool | 89 | 4200 |
| Daylight | D | Daylight | 79 | 6500 |
| Lite-White | LW | Cool | 51 | 4100 |
| White | W | Neutral | 58 | 3500 |
| Warm White | WW | Warm | 53 | 3000 |
| Warm White Deluxe | WWX | Warm | 79 | 3000 |
| Natural | N | Warm | 81 | 3400 |
| Colortone 50 | C50 | Daylight | 92 | 5000 |
| Colortone 75 | C75 | Daylight | 95 | 7500 |
| SPEC 30 | Spec 30 | Warm | 70 | 3000 |
| SPEC 35 | Spec 35 | Neutral | 73 | 3500 |
| SPEC 41 | Spec 41 | Cool | 70 | 4100 |
| Ultralume 30 | 30U | Warm | 85 | 3000 |
| Ultralume 35 | 35U | Neutral | 85 | 3500 |
| Ultralume 41 | 41U | Cool | 85 | 4100 |

Color Selection Guide