



HALO[®]

Lighting Solutions
Recessed Downlighting Products

HALO HOME™

Smart solutions for a connected home

Eaton's **Halo Home** offers Bluetooth enabled lighting and controls products that can be easily configured by using a smartphone or tablet. The system allows the user to securely connect, automate and control a variety of lighting and controls products throughout the interior and exterior of the home.

- Connects the power of HALO
- Simple configuration by using a smartphone or tablet
- System is fully functional with or without the internet
- Flexible features that can provide user satisfaction and true energy savings

● **Connect,
automate
and control
your homes
lighting**

Connect the power of HALO.



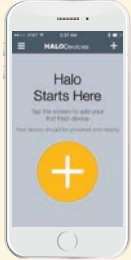
Wireless LED
downlights



Dimmers /
switches



Internet access
bridge



Mobile
applications



HALO
Market-leader
residential
lighting



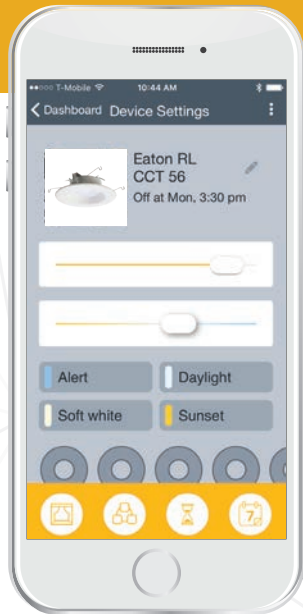
Light

Power

Connect



Search for "Halo Home"
in your app store.



On/Off/Dim



Grouping



Scheduling



Adjustable Color
Temperature
(2700K - 5000K)



Mix and match Halo Home products to personalize your lighting.



4" and 5" / 6"
Halo LED downlights



internet access bridge



works with Echo
(Alexa)



anyplace bluetooth
dimmer switch



HALO[®] Connect

RL Zigbee wireless
4", 5"/6" LED retrofit downlight

Automate and control lighting remotely

Set automations or scheduled actions through the hub app. Geofencing also available through the app.

Color adjustment

Adjust color temperature (CCT) using the hub app. 2700K (warm) - 5000K (cool)

Create scenes by grouping

Choose multiple Halo RL wireless downlights and control them all together using the hub app.

ON/OFF functions

Perform ON/OFF functions from anywhere.

Dimming function

The downlight will dim to 5% using the hub app. Do not connect the downlight to a wall dimmer.

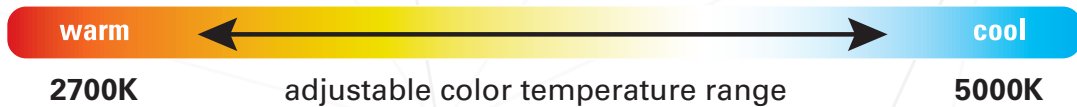
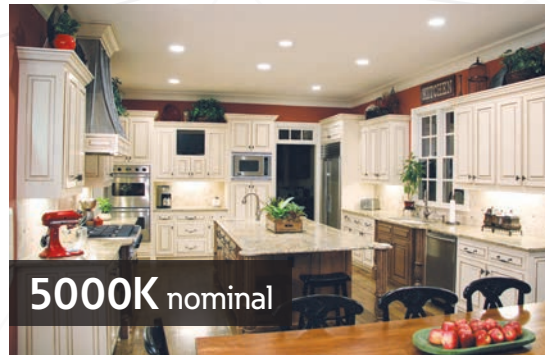
Uses ZigBee

Smart device and **hub required**. Sold separately.

- Compatible with Wink and SAMSUNG SmartThings.
- Works directly with Echo Plus with built-in hub.



echo plus



Halo LED Downlight
wireless controlled



Hub
- Compatible with Wink Hub 2 and SAMSUNG SmartThings
- Works with Echo Plus with built-in hub



Smart device
Virtual assistant or smart device

RL

4" and 5"/6" LED retrofit downlight

The Halo RL LED is a complete 4" and 5"/6" LED baffle-trim module for recessed downlights. The RL is designed for use in new construction, remodel, and retrofit installation in Halo and other compatible 4", 5" and 6" recessed downlight housings. The integral LED driver offers 120 volt dimming capability. RL56 is offered in 600, 900, and 1200 lumen series. Suitable for use in clothes closets when installed with NEC® 410.16 spacing requirements.

RL models in 90 CRI are offered in 2700K, 3000K, 3500K, 4000K, and 5000K. Optional accessories include designer trims in white (paintable), satin nickel, and tuscan bronze.





RL4



RL460WH9xxPK 4" retrofit baffle/trim LED module, 90 CRI



HE26LED
Edison Base Adapter
for retrofit (included)



RL56
600, 900 and 1200 Series



- 600 lumen**
- RL560WH69xx** 5"/6" retrofit baffle/trim LED module, 90 CRI
- 900 lumen**
- RL560WH99xx** 5"/6" retrofit baffle/trim LED module, 90 CRI
- 1200 lumen**
- RL560WH129xx** 5"/6" retrofit baffle/trim LED module, 90 CRI

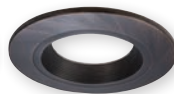
xx - **27**=2700K, **30**=3000K, **35**=3500K, **40**=4000K, **50**=5000K

Designer trims (order separately)

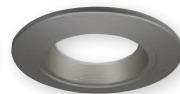
Baffle



RL4TRMWHB
RL56TRMWHB
white (paintable)

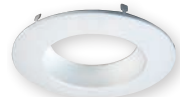


RL4TRMTBZB
RL56TRMTBZB
tuscan bronze



RL4TRMSNB
RL56TRMSNB
satin nickel

Splay



RL4TRMWH
RL56TRMWH
white (paintable)



RL4TRMTBZ
RL56TRMTBZ
tuscan bronze



RL4TRMSN
RL56TRMSN
satin nickel

RA

4" and 5"/6" LED retrofit adjustable gimbal

The Halo RA LED is a complete 4" and 5"/6" adjustable gimbal LED module; suitable for new construction, remodel, and retrofit installation in Halo and other compatible 4", 5" and 6" recessed downlight housings. The RA adjustable gimbal offers 35-degree tilt and up to 360-degree rotation. The integral LED driver offers 120 volt dimming capability. The RA4 and RA56 adjustable gimbals are offered with 90 CRI in 2700K and 3000K; and with beam spread options in Very Wide Flood (VWFL) and Narrow Flood (NFL) models.



Narrow Flood (NFL)



RA4069xxNFLWH

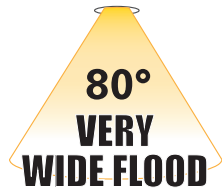
4" adjustable gimbal, 90 CRI, narrow flood



RA56069xxNFLWH

5"/6" adjustable gimbal, 90 CRI, narrow flood

Very Wide Flood (VWFL)



RA4069xxWH

4" adjustable gimbal, 90 CRI, very wide flood



RA56069xxWH

5"/6" adjustable gimbal, 90 CRI, very wide flood



xx - 27=2700K, 30=3000K



LT

4" and 5"/6" LED retrofit baffle trim kit

The Halo LT combines the energy savings, long life and sustainability of LED in an easy to install retrofit baffle trim kit. The LT is designed for use in new construction, remodel, and retrofit installation in Halo and other compatible 4", 5" and 6" recessed downlight housings. The diffuse lens provides shielding to the source and wet location listing; suitable for use in showers or in outdoor covered ceiling applications. Suitable for use in clothes closets when installed with NEC® 410.16 spacing requirements. Integral driver provides 120 volt phase cut dimming, an inline connector provides power using a medium base socket adapter provided or connect directly to the mating connector in the LED housings. LT models in 90 CRI are offered in 2700K, 3000K, 3500K, 4000K, and 5000K. Ships with a gasket and makes any housing airtight for added energy savings and code compliance.





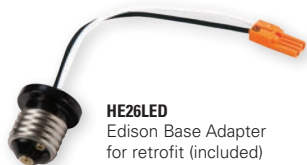
LT4

Slidewright



LT56

Slidewright



HE26LED

Edison Base Adapter
for retrofit (included)

LT40WH69xx 4" retrofit baffle/trim LED module, 90 CRI

LT560WH69xx 5"/6" retrofit baffle/trim LED module, 90 CRI

xx - 27=2700K, 30=3000K, 35=3500K, 40=4000K, 50=5000K



ML4

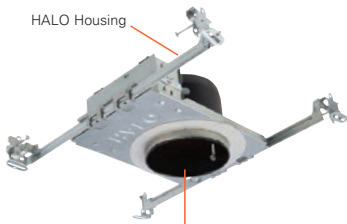
4-inch LED downlighting system

The ML4 system is comprised of a housing, LED module, and round or square 2-inch aperture pinhole trims. This compact assembly installs from below the ceiling in standard 4-inch line voltage housings suitable for 2x6 residential framing or commercial construction (H995 housing series).

For even tighter spaces, ultra-shallow new construction and remodel (install from below) housings are available and are suitable for 2x4 framing (H245 series). For ceiling types that make recessed lighting difficult, like concrete pour, round and surface cylinders support direct attachment to finished ceiling surfaces.

Although diminutive in size the 900 lumen series ML4 delivers powerful beams of light providing the optical control and color quality typically associated with low voltage tungsten-halogen MR16 lamps. Delivered center beam candlepower (CBCP) of ML4 LED exceeds 50W low voltage MR16 lamps with significantly higher candela per watt (Cd/W).





HALO Housing



ML4 optic



HALO ML4 LED Trim



TIR50NFL25
25 degree narrow flood



TIR50FL40
40 degree flood



TIR50WFL55
55 degree wide flood



TIR50AWW25
asymmetric wall wash



LH501MB
Media holder for 50mm lens



media holder with lens installed on optic

The narrow flood optic, the most efficient and powerful beam, is pre-installed in the ML4 module and is suitable for a wide range of applications. Alternate beams are possible – flood and wide flood optics are available as accessories and easily installed in the field. An optional media holder attaches directly to the optic and accepts industry standard 2" diameter (50mm) lens media providing additional creative control.



ML4 LED module and trims



ML4D09NFL9xxE

LED light engine

(interchangeable trim and optic options)

xx - 27=2700K, 30=3000K, 35=3500K, 40=4000K

Compatible LED housings

H995ICAT - ICAT new construction, 120V

H995RICAT - ICAT remodel, 120V

H245ICAT - ICAT ultra-shallow new construction, 120V

H245RICAT - ICAT ultra-shallow remodel, 120V

Surface housings

HS4Rxx - Surface round, 120-277V

HS4Sxx - Surface square, 120-277V

xx - MW=matte white, MB=matte black



Open pinhole

TL41R

2" round open pinhole



TL41RMW

matte white flange



TL41RBN

brushed nickel flange



TL41RBCu

brushed copper flange



TL41RMB

matte black flange



TL41RORB

oil rubbed bronze flange

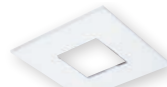


TL41RGB

german bronze flange

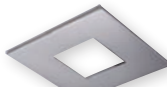
TL42S

2" square open pinhole



TL42SMW

matte white flange



TL42SBN

brushed nickel flange



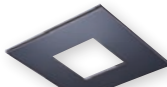
TL42SBCu

brushed copper flange



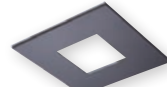
TL42SMB

matte black flange



TL42SORB

oil rubbed bronze flange



TL42SGB

german bronze flange

TL4 series trims are offered in four luxurious electro-plated finishes; brushed nickel, oil rubbed bronze, brushed copper and German bronze. Use to complement your thoughtfully selected interior finishes.

The TL4 trims are available in three trim types; open, lens, and lens wall wash.

The trims are attached by four powerful rare earth Neodymium magnets; they float on a bubble of magnetic flux keeping the trims held securely in place.

Lens pinhole *Showerlight*

TL43R

2" round lens pinhole



TL43R2GMWBB

matte white flange, white lens frame



TL43R2GMBBB

matte black flange, black lens frame



TL43R2GMWBB

matte black flange, black lens frame



TL43R2GORBBB

oil rubbed bronze flange, black lens frame



TL43R2GBNBB

brushed nickel flange, black lens frame



TL43R2GGBBB

german bronze flange, black lens frame

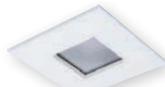


TL43R2GBCuBB

brushed copper flange, black lens frame

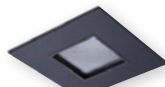
TL42S

2" square open pinhole



TL44S2GMWBB

matte white flange, white lens frame



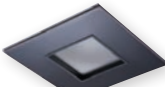
TL44S2GMBBB

matte black flange, black lens frame



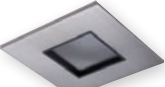
TL44S2GMWBB

matte black flange, black lens frame



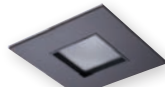
TL44S2GORBBB

oil rubbed bronze flange, black lens frame



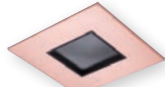
TL44S2GBNBB

brushed nickel flange, black lens frame



TL44S2GGBBB

german bronze flange, black lens frame



TL44S2GBCuBB

brushed copper flange, black lens frame

Lens wall wash *Showerlight*

TL45R

2" round lens wall wash



TL45R6GMWBB

matte white flange, white lens frame



TL45R6GMWBB

matte white flange, black lens frame

TL46S

2" round lens wall wash



TL46S6GMWBB

matte white flange, white lens frame



TL46S6GMWBB

matte white flange, black lens frame

4" ultra-shallow LED housings



H245ICAT

4" ICAT ultra-shallow new construction



H245RICAT

4" ICAT ultra-shallow remodel

ML56

5-inch / 6-inch LED downlighting system

The Halo ML56 LED downlight collection is comprised of LED modules with 5" and 6" trims. ML56 LED modules are offered in three lumen packages across the 600, 900, and 1200 series. For general lighting in commercial and residential applications for either new construction or retrofit existing 5" and 6" compatible housings. Halo LED ML56 features excellent color (80 CRI or 90 CRI) and offers a wide selection of color temperatures (2700K, 3000K, 3500K, and 4000K). An optional dim-to-warm (D2W™) feature creates an additional lighting solution as it provides a smooth warm transition from 3000K to 1850K when dimmed.





HALO Housing

HALO ML56 LED Light Module (600 or 900 Series)

HALO ML56 LED Light Module (1200 Series)

OR



optional NFL lens† (1200 Series)



HALO ML56 LED Trim

*HE26LED Edison Screw Base Adapter (included for retrofit of non-LED housings).

†Optional accessory for the ML56-1200 series.

ML56 LED Modules

600 or 900 Series



600 lumen

ML56068xx 5"/6" LED light module, 600 lumen, 80 CRI

ML56069xx 5"/6" LED light module, 600 lumen, 90 CRI

900 lumen

ML56098xx 5"/6" LED light module, 900 lumen, 80 CRI

ML56099xx 5"/6" LED light module, 900 lumen, 90 CRI

Dim-to-warm

ML5606D2W930 5"/6" dim-to-warm LED light module, 600 lumen, 90 CRI, 3000K to 1850K

ML5609D2W930 5"/6" dim-to-warm LED light module, 900 lumen, 90 CRI, 3000K to 1850K



1200 Series



1200 lumen

ML56128xx 5"/6" LED light module, 1200 lumen, 80 CRI

ML56129xx 5"/6" LED light module, 1200 lumen, 90 CRI

Dim-to-warm

ML5612D2W930** 5"/6" dim-to-warm LED light module, 1200 lumen, 90 CRI, 3000K to 1850K



**Beam forming optics/media not recommended for use with ML5612D2W930 LED module.

xx - 27=2700K, 30=3000K, 35=3500K, 40=4000K, 50=5000K

1200 Series Accessories



standard diffusing lens (included)



BFR56NFL† narrow flood lens (NFL)



BFR56MH† media holder (requires BFR56NFL & L345SF, ordered separately)

L345SF soft focus lens (requires BFR56NFL & BFR56MH, ordered separately)

ML56 5" trims

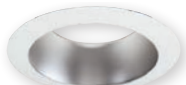
592
reflector



592W
white



592SC
specular clear

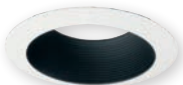


592H
haze

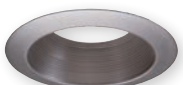
593
baffle



593WB
white baffle and trim



593BB
black baffle, white trim



593SN
satin nickel baffle and trim



593TBZ
tuscan bronze baffle and trim

596
shallow baffle



596WB
white baffle and trim

591 non-conductive
"dead front" baffle



591WB
white baffle and trim
(for 600 Series module only)

594
semi-regressed eyeball



594WB
white



594SN
satin nickel



594TBZ
tuscan bronze

595
wall wash



595WW
white trim ring

5" oversize trim ring



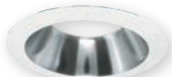
TRM590WH
white

ML56 6" trims

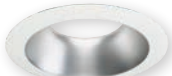
692
reflector



692W
white



692SC
specular clear

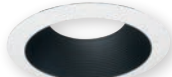


692H
haze

693
baffle



693WB
white baffle and trim



693BB
black baffle, white trim



693SN
satin nickel baffle and trim



693TBZ
tuscan bronze baffle and trim

696
shallow baffle



696WB
white baffle and trim

691 non-conductive
"dead front" baffle



691WB
white baffle and trim
(for 600 Series module only)

694
semi-regressed eyeball



694WB
white



694SN
satin nickel



694TBZ
tuscan bronze

695
wall wash



695WW
white trim ring

6" oversize trim ring



TRM690WH
white

LED housings

4-inch, 5-inch, 6-inch

Halo offers dedicated LED new construction and remodel housings in 4-inch, 5-inch and 6-inch apertures. The Halo LED housings are designed for compatible use with designated Halo LED modules. Housings are designed for insulated ceilings and can be in direct contact with ceiling insulation*. The AIRTITE housing design prevents airflow between conditioned and unconditioned spaces and saves on both heating and air conditioning spaces. The LED connector offers quick plug-in installation and high efficacy code compliance when used with designated Halo LED modules and trims.

4" housings



H245ICAT

4" ICAT ultra-shallow new construction, air-tite



H245RICAT

4" ICAT ultra-shallow remodel, air-tite

compatible Halo LED modules



RL4



RA4



LT4



ML4
with trims



SMD4



SLD4

5" housings



E550ICAT

5" ICAT LED new construction, air-tite



E550RICAT

5" ICAT LED remodel, air-tite

compatible Halo LED modules



RL56



LT56



RA56



ML56
with 5-inch trims



SMD6



SLD6



6" housings



E750ICAT
6" ICAT LED new construction, air-tite



E750RICAT
6" ICAT LED remodel, air-tite



H2750ICAT
6" ICAT LED shallow new construction, air-tite



H2750RICAT
5" ICAT LED shallow remodel, air-tite

compatible Halo LED modules



RL56



LT56



RA56



ML56
with 6-inch trims

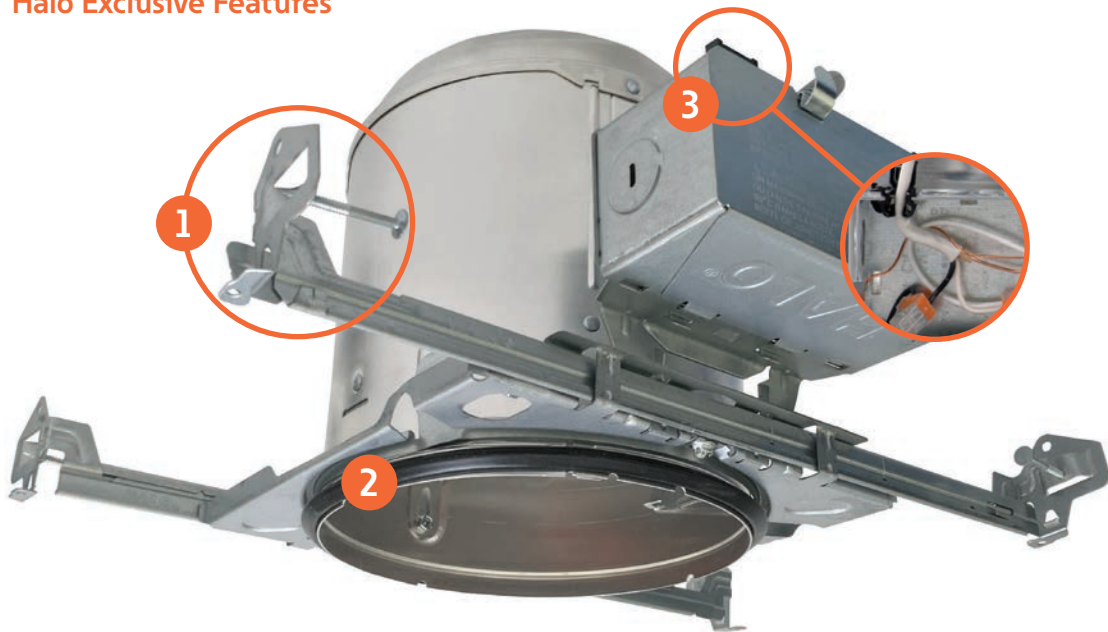


SMD6



SLD6

Halo Exclusive Features



1. All-Nail bar hangers

- Integral nail angled to accommodate ease of installation
- Q-channel interlocking bars for secure adjustment
- Pass-N-Thru feature allows bars to pass through each other for adjustment and tool-less shortening without removal

2. AIR-TITE gasket

- Pre-installed compression gasket with a special can design that limits airflow and seals the can, frame & ceiling
- No additional gaskets or caulk required - saving installation time and money
- Tested to ASTM-E283-04 standard

3. Slide-N-Side junction box

- Hinged captive cover, box repositionable on the frame to clear obstructions
- Slide-N-Side wire traps and quick connects allow non-metallic sheathed cable to be installed outside the box, without tools and without removing knockouts.
- Accommodates standard non-metallic sheathed cable:
 - U.S.: #14/2, #14/3, #12/2, #12/3
 - Canada: #14/2, #14/3, #12/2

SMD

Surface mount LED downlighting

The Halo Surface Mount LED Downlight (SMD) is an ultra-low profile surface mounting luminaire with a modern look and high performance. SMD4 (4") and SMD6 (6") are designed for installation in recessed housings and many 3-1/2" and 4" square, octagon, or round junction boxes. Suitable for use in clothes closets when installed with NEC® 410.16 spacing requirements. The SMD series also offers a direct mount (DM) version which can be installed directly into the ceiling with no additional junction box or housing required. Utilizing the integral Halo enclosure, the DM version of the SMD provides a quick installation and flush finish with the ceiling.





SMD

housing and junction box compatible



- SMD4R69xxWH** 4" Round surface mount LED downlight, 90 CRI
- SMD4S69xxWH** 4" Square surface mount LED downlight, 90 CRI
- SMD6R69xxWH** 6" Round surface mount LED downlight, 90 CRI
- SMD6S69xxWH** 6" Square surface mount LED downlight, 90 CRI

xx - 27=2700K, 30=3000K, 35=3500K, 40=4000K, 50=5000K



SMD-DM

direct mount into ceiling; no housing or jbox needed



- SMD4R69xxWHDM** 4" Round surface mount LED downlight, 90 CRI, direct mount
- SMD4S69xxWHDM** 4" Square surface mount LED downlight, 90 CRI, direct mount
- SMD6R69xxWHDM** 6" Round surface mount LED downlight, 90 CRI, direct mount
- SMD6S69xxWHDM** 6" Square surface mount LED downlight, 90 CRI, direct mount

xx - 27=2700K, 30=3000K, 35=3500K, 40=4000K, 50=5000K



SMD

- Fits most j-boxes and 5-inch or 6-inch recessed housings
- Ceiling or wall mounting in compatible junction boxes
- Replaces bulbs, flush mounts, and recessed trims



mounting methods



Junction box bracket



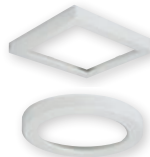
Torsion springs for recessed housings



Friction clips for recessed housings

SMD Designer Trims (sold separately)

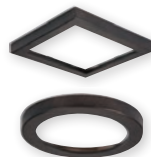
- Exclusively for use with Halo SMD4 and SMD6 LED modules
- Round or square trims
- Finishes: white (paintable), satin nickel, tuscan bronze



SMDxSTRMWH
SMDxRTRMWH



SMDxSTRMSN
SMDxRTRMSN



SMDxSTRMTBZ
SMDxRTRMTBZ

SMD-DM

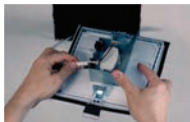
- Install into drywall without a housing or junction box
- Integral junction box
 - (2) conduit knock-outs
 - (2) Slide-N-Side™ wire traps



easy installation



1. Cut a hole in drywall with the provided template.



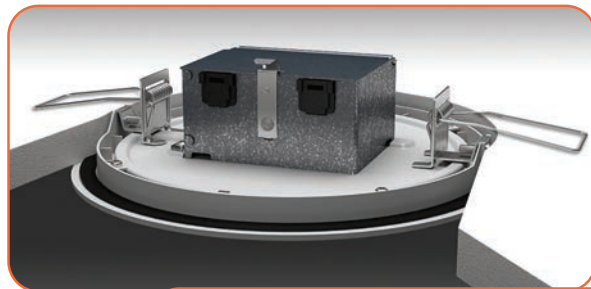
2. Wire to the integrated fixture junction box.



3. Fold both of the spring clips upward.



4. Push the fixture up into place.



no housing or jbox required



SLD

4" and 6" surface LED downlight

Halo Surface LED Downlight (SLD) incorporates WaveStream™ technology to create an ultra-low profile 4" and 6" surface mounting luminaire with the performance and look of a traditional downlight. SLD is designed for installation in many square, octagon, or round junction boxes. Supply wire adapter with LED quick wiring connector included. Suitable for residential or commercial installations. Ideal for storage areas, attics and basements; and may be used in 4", 5" and 6" recessed downlights. Suitable for use in clothes closets when installed with NEC® 410.16 spacing requirements. The included retrofit kit's dedicated LED wiring connector meets high efficacy code requirements.





SLD4



SLD4058xxWH 4" surface LED downlight, 80 CRI

SLD4059xxWH 4" surface LED downlight, 90 CRI

SLD4058xxWHJB 4" surface LED downlight, 80 CRI, junction box mount only

SLD4059xxWHJB 4" surface LED downlight, 90 CRI, junction box mount only

600 lumen

SLD6068xxWH 6" surface LED downlight, 600 lumen, 80 CRI

SLD6069xxWH 6" surface LED downlight, 600 lumen, 90 CRI

SLD6068xxWHJB 6" surface LED downlight, 600 lumen, 80 CRI, junction box mount only

SLD6069xxWHJB 6" surface LED downlight, 600 lumen, 90 CRI, junction box mount only

xx - **27**=2700K, **30**=3000K, **35**=3500K, **40**=4000K



SLD6



1200 lumen

SLD6128xxWH 6" surface LED downlight, 1200 lumen, 80 CRI

SLD6129xxWH 6" surface LED downlight, 1200 lumen, 90 CRI

1200 lumen - universal voltage (120V-277V)

SLD6128xxWHUNVJB 6" surface LED downlight, 1200 lumen, 80 CRI, universal voltage 120V-277V, junction box mount only

SLD6129xxWHUNVJB 6" surface LED downlight, 1200 lumen, 90 CRI, universal voltage 120V-277V, junction box mount only

Designer trims (order separately)



SLD4TRMWH
SLD6TRMWH
white (paintable)



SLD4TRMTBZ
SLD6TRMTBZ
tuscan bronze



SLD4TRMSN
SLD6TRMSN
satin nickel

Junction box accessories (order separately)



SLD4EXT
4" Surface LED
spacer ring



SLD4RAD
4" SLD round surface
j-box adapter



SLD6EXT
6" Surface LED
spacer ring



SLD6RAD
6" SLD round surface
j-box adapter



SLD6SADPLT
6" SLD square surface
adapter plate

H4 LED downlight system

Halo H4 LED downlight collection is a three-part system that consists of a 4" downlight housing, light engine module, and trim to be installed according to the pace of the project. The H4 collection is offered in 90 CRI, R9 > 50, with four LED light engines, accepts 16 different trims including reflector, baffle and lensed. Adjustable gimbal light engines feature aiming up to 35° tilt, and interchangeable reflector in 25°, 35°, and 55° beam. Housings are offered in Insulated Ceiling (IC) and Non-Insulated Ceiling (Non-IC), both in Air-Tite™ models that include dimmable LED drivers. H4 LED is ENERGY STAR® certified and can be used for California Title 24, and IECC High Efficacy compliance with designated LED modules and LED trims. Halo 4" LED downlights save energy, without sacrificing performance.



H4 adjustable gimbal and light engine

Round and square gimbal styles with interchangeable beam reflectors



ELG4069xx WH/SN/TBZ
round adjustable LED light engine



ELSG4069xx WH/SN/TBZ
square adjustable LED light engine

xx - 27=2700K, 30=3000K, 35=3500K, 40=4000K
WH=White, **SN**=Satin Nickel, **TBZ**=Tuscan Bronze

TL412RK

gimbal reflector kit (optional)



25° Reflector
(Included)



35° Flood
Reflector



50° Wide
Flood Reflector

Compatible LED housings

H457ICAT1E - ICAT new construction, 120V

H457RICAT1E - ICAT remodel, 120V

H457TATE010 - Non-IC new construction, UNV (120V-277V)

H457TCPE010 - Non-IC new construction, chicago plenum, UNV (120V-277V)

H457RTATE010 - Non-IC remodel, UNV (120V-277V)

Available finishes



WH
White



SN
satin nickel



TBZ
tuscan bronze



H4 light engine and trims



EL4069xx
LED light engine
(interchangeable trim options)

xx - 27=2700K, 30=3000K, 35=3500K, 40=4000K

Compatible LED housings

H457ICAT1E - ICAT new construction, 120V

H457RICAT1E - ICAT remodel, 120V

H457TATE010 - Non-IC new construction, UNV

H457TCPE010 - Non-IC new construction,
chicago plenum, UNV

H457RTATE010 - Non-IC remodel, UNV

TL408

Solite® regressed flat lens square baffle



TL408WHWB
white baffle and trim with Solite® lens



TL408WHBB
black baffle, white trim with Solite® lens



TL408SNBB
black baffle, satin nickel trim with Solite® lens



TL408TBZBB
black baffle, tuscan bronze trim with Solite® lens

TL410

deep regressed dome lens reflector



TL410WH
white reflector and trim



TL410SBK
specular black reflector, white trim



TL410SC
specular clear reflector, white trim



TL410H
haze reflector, white trim



TL410SN
satin nickel reflector and trim



TL410TBZ
tuscan bronze reflector and trim

TL411

deep regressed dome lens baffle



TL411WB
white baffle and trim



TL411BB
black baffle, white trim

TL402
Solite® regressed flat lens reflector



TL402WHS
white reflector and trim



TL402SBKS
specular black reflector, white trim



TL402SCS
specular clear reflector, white trim



TL402HS
haze reflector, white trim



TL402SN
satin nickel reflector and trim



TL402TBZ
tuscan bronze reflector and trim

TL402
Solite® regressed flat lens baffle



TL403WB
white baffle and trim



TL403BB
black baffle, white trim

TL400
Thin profile designer trim rings



TL400WH
white trim ring



TL400SBK
black trim ring



TL400SN
satin nickel trim ring



TL400TBZ
tuscan bronze trim ring



TL400PC
polished chrome trim ring

TL409
wall wash



TL409WW
semi-specular reflector with wall wash optic, diffusing lens, white trim



TL409WHWW
white reflector with wall wash optic, diffusing lens, white trim

TL422
polymer "dead front" shower trim



TL422PS
white polymer baffle and ring with prismatic clear polymer lens

HL6

ALLSLOPE LED recessed lighting

Featuring unique interchangeable beam-forming optics, full range dimming, multiple color temperatures and trim options, the Halo HL6 AllSlope LED 6" downlight system is specifically designed for slope ceilings with pitch aiming from 2/12 (10 degrees) to 12/12 (45 degrees). The innovative design allows the LED light engine full adjustment capability so it can be aimed straight down in accordance with the ceiling pitch, resulting in outstanding performance and appearance. The three piece system consists of a 6-inch aperture housing, available in 1200 lumen series or 1800 lumen series; LED light engines are offered with 90 CRI (R9>50) in 2700K, 3000K, 3500K, 4000K; and available with three interchangeable optics. The trim selection is from a full line of slope ceiling trims including reflectors, baffles, and lens choices.





Halo AllSlope LED housing



Halo AllSlope LED light engine (1200 or 1800 Series)



interchangeable lens



Halo slope trim

HL6 LED light engines



HLM69xx

AllSlope LED light engine (interchangeable lens optics)

xx - 27=2700K, 30=3000K, 35=3500K, 40=4000K

Compatible LED housings

HL612ICAT - ICAT new construction, 120V

HL618TAT - Non-IC new construction, air-tite, UNV

HL618TCP - Non-IC new construction, Chicago plenum, UNV

Lens optic selection



HL6NFL

narrow flood (NFL) lens



HL6FL

flood (FL) lens



HL6WFL

wide flood (WFL) lens



HL6 AllSlope housings and trims

70

lens and diffuser



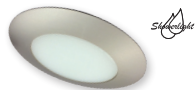
70P

albalite glass lens, white metal trim



70PS

albalite glass lens, white polymer trim, wet location



70SNS

albalite glass lens, satin nickel polymer trim, wet location

71

drop glass lens and diffuser



71P

drop opal glass lens, white metal trim



71PS

drop opal glass lens, white polymer trim, wet location "dead front" showerlight

6160

drop opal plastic lens



6160WH

drop opal plastic lens, white plastic trim

6162

drop opal plastic lens



6162WH

drop opal plastic lens with upper reflector, white plastic trim



73

fresnel glass lens and diffuser



73P

drop opal plastic lens, white metal trim



73PS

drop opal plastic lens, white polymer trim,
wet location "dead front" showerlight

455

reflector



455SC

specular clear reflector, white trim



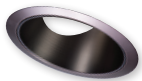
455H

semi-specular haze reflector, white trim



455SN

satin nickel reflector and trim



455TBZ

tuscan bronze reflector and trim

456

Coilex® baffle



456W

white coilex baffle and trim



456P

black coilex baffle, white trim



E26 expanded collection

Halo has expanded its Fit-All concept with a new collection of 4-Inch, 5-inch and 6-inch housings and trims designed for the new generation of E26 screwbase halogen, LED, and CFL lamps; with a focus on value, streamlined design, and exclusive installation-friendly features.

With continued nationwide adoption of new E26 screw base lamps in LED, CFL, and halogen technologies; Halo has expanded the line with compatible new trim and housing designs. The expanded E26 series is ideal for both residential and light commercial downlighting applications with its versatile installation, attractive design, universally accepted E26 screw base, and capability to employ new energy efficient lamps.

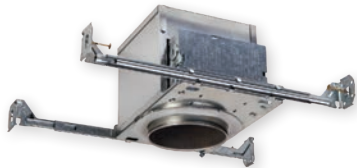
New trims feature a consistent design style in an all-inclusive offering of full-cone and half-cone reflectors and baffles; gimbal and eyeball directionals; open and lensed wet location with “dead-front” options.

Housings feature efficient installation capability in a compact-sized frame with an offering of socket-bracket and no-socket-bracket models. New installation features include a repositionable junction box with hinged door for flexibility in tight spaces; All Nail! bar hangers with new Q-Channel interlocking bars that pass-thru for increased stability and tool-less shortening. Remodels feature an exciting new retention method of speed clamps with locking tabs that adjust for ceilings from 3/8” – 2”.





4" housings



E4ICATSB

4" ICAT new construction, air-tite



E4TATSB

4" Non-IC new construction, air-tite



E4RTATSB

4" Non-IC remodel, air-tite



4" trims

4001

step plastic baffle



4001WB

white baffle and trim



4001BB

black baffle, white trim

4002

eyeball, 30° tilt



4002WH

white eyeball

4003

reflector



4003SC

specular clear, white trim

4010

metal baffle



4010WB

white baffle and trim



4010BB

black baffle, white trim

4055

glass lens



4055WH

glass lens, white trim

4013

full cone baffle



4013WB

white baffle and trim



4013BB

black baffle and white trim



5" housings



E5ICAT

5" ICAT new construction

E5ICATNB

5" ICAT new construction, no socket bracket

E550ICAT

5" LED ICAT new construction



E5RICAT

5" ICAT remodel

E550RICAT

5" LED ICAT remodel



E5TAT

5" Non-IC new construction

E5TATNB

5" Non-IC new construction, no socket bracket



E5RTAT

5" Non-IC remodel

5" reflectors

5107

specular reflector



5107SC

specular reflector, white trim

5120

full cone reflector



5120WH

white reflector and trim

5121

shallow full cone reflector



5121WH

white reflector and trim



5120SN

satin nickel reflector and trim



5120TBZ

tuscan bronze reflector and trim



5" baffles

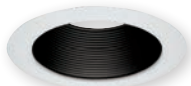
5102

tapered metal baffle



5102WB

white baffle and trim



5102BB

black baffle and white trim

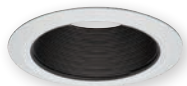
5109

coilex® tapered baffle



5109WB

white plastic tapered coilex baffle and trim



5109BB

black plastic tapered coilex baffle and white trim



5109BKBB

black plastic tapered coilex baffle and trim

5110

perftex™ baffle



5110WB

white perftex baffle and trim



5110BB

black perftex baffle and white trim



5110BKBB

black perftex baffle and trim

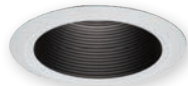
5125

full cone baffle



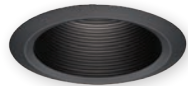
5125WB

white baffle and trim



5125BB

black baffle and white trim



5125BKBB

black baffle and trim

5126

shallow full cone baffle



5126WB

white baffle and trim



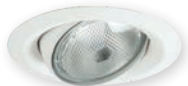
5126BB

black baffle and white trim

5" adjustables

5130

eyeball, 35° tilt, PAR30



5130WH

white eyeball and trim

5165

gimbal, 25° tilt, PAR30



5165WH

white gimbal and trim



5165SN

satin nickel gimbal and trim

5222

regressed adjustable gimbal, 30° tilt



5222WB

white baffle and white trim



5222SC

specular clear reflector and white trim

5135

eyeball, 35° tilt, PAR20



5135WH

white eyeball and trim



5165BK

black gimbal and trim



5165TBZ

tuscan bronze gimbal and trim



5222BB

black baffle and white trim



5222H

haze reflector and white trim

5" showerlights

5145*

open wet location shallow reflector



5145WH
white



5145SN
satin nickel



5145TBZ
tuscan bronze

5146*

open wet location full reflector



5146WH
white



5146SN
satin nickel



5146TBZ
tuscan bronze

5150

frost glass lens



5150WH
frost lens, white plastic trim



5150SN
frost lens, satin nickel
plastic trim



5150TBZ
frost lens, tuscan bronze
plastic trim



5162

drop opal plastic lens



5162WH

drop opal plastic lens with upper reflector, white plastic trim



5230

squirele frost glass lens, metal trim



5230AH

frost glass lens, aluminum haze squirele trim



5230PN

frost glass lens, polished nickel squirele trim



5230SN

frost glass lens, satin nickel squirele trim



5230TBZ

frost glass lens, tuscan bronze squirele trim

5255

soft square, frost glass lens



5255WH

frost glass lens, white plastic trim



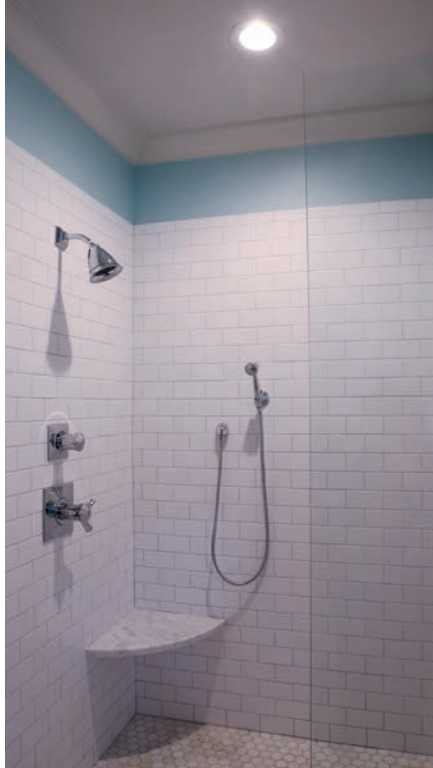
5255SN

frost glass lens, satin nickel plastic trim



5255TBZ

frost glass lens, tuscan bronze plastic trim



5" open and splay

5175

open, wide trim



5175WH
white

5176 open, wide trim,
socket supporting



5176WH
white

5185

splay



5185WH
white

5186

splay, socket supporting



5186WH
white



5175SN
satin nickel



5176SN
satin nickel



5185SN
satin nickel



5186SN
satin nickel



5175TBZ
tuscan bronze



5176TBZ
tuscan bronze



5185TBZ
tuscan bronze



5186TBZ
tuscan bronze

6" housings



E7ICAT

6" ICAT new construction

E7ICATNB

6" ICAT new construction, no socket bracket

E750ICAT

6" LED ICAT new construction



E7RICAT

6" ICAT remodel

E750RICAT

6" LED ICAT remodel



E7TAT

6" Non-IC new construction

E7TATNB

6" Non-IC new construction, no socket bracket



E7RTAT

6" Non-IC remodel

6" shallow housings



E27ICAT

6" shallow ICAT new construction

H2750ICAT

6" shallow ICAT LED new construction



E27RICAT

6" shallow ICAT remodel

H2750RICAT

6" shallow ICAT LED remodel



E27TAT

6" shallow Non-IC new construction



E27RTAT

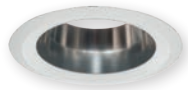
6" shallow Non-IC remodel



6" reflectors

6106

straight reflector



6106SC

specular reflector, white trim

6107

tapered reflector



6107SC

specular reflector, white trim

6120

full cone reflector



6120WH

white reflector and trim



6120SN

satin nickel reflector and trim



6120TBZ

tuscan bronze reflector and trim

6121

shallow full cone reflector



6121WH

white reflector and trim



6" baffles

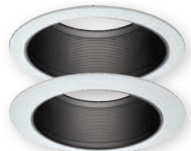
6100

tapered metal baffle



6100WB

white baffle and (2) white trims
(wide and narrow included)



6100BB

black baffle and (2) white trims
(wide and narrow included)

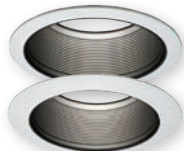
6101

straight metal baffle



6101WB

white baffle and (2) white trims
(wide and narrow included)



6101BB

black baffle and (2) white trims
(wide and narrow included)

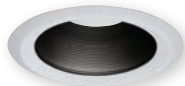
6102

tapered metal baffle



6102WB

white baffle and trim



6102BB

black baffle and white trim

6103

straight metal baffle



6103WB

white baffle and trim



6103BB

black baffle and trim

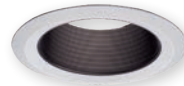
6108

coilex® straight baffle



6108WB

white plastic straight coilex baffle
and trim



6108BB

black plastic straight coilex baffle
and trim



6108BKBB

black plastic straight coilex baffle
and trim

6109

coilex® tapered baffle



6109WB

white plastic tapered coilex baffle
and trim



6109BB

black plastic tapered coilex baffle
and white trim



6109BKBB

black plastic tapered coilex baffle
and trim

6110

perftex™ baffle



6110WB

white perftex baffle and trim



6110BB

black perftex baffle and white
trim



6110BKBB

black perftex baffle and trim

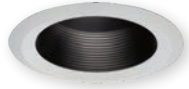
6125

full cone with baffle



6125WB

white baffle and trim



6125BB

black baffle and white trim



6125BKBBB

black baffle and trim

6126

shallow full cone with baffle



6126WB

white baffle and trim



6126BB

black baffle and white trim

6" adjustables

6130

eyeball, 35° tilt PAR30



6130WH

white eyeball and trim

6170

gimbal, 25° tilt PAR38



6170WH

white gimbal and trim



6170SN

satin nickel gimbal and trim



6170BK

black gimbal and trim



6170TBZ

tuscan bronze gimbal and trim



6215

double gimbal 35°-50° tilt, PAR38



6215WH

white gimbal and trim



6215SN

satin nickel gimbal and trim



6215BK

black gimbal and trim



6215TBZ

tuscan bronze gimbal and trim

6222

regressed adjustable, 45° tilt



6222WB

white baffle and white trim



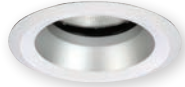
6222BB

black baffle and white trim



6222SC

specular clear reflector and white trim



6222H

haze reflector and white trim

6" showerlights

6145*

open wet location shallow reflector



6145WH
white



6145SN
satin nickel



6145TBZ
tuscan bronze

6146*

open wet location full reflector



6146WH
white



6146SN
satin nickel



6146TBZ
tuscan bronze

6150

frost glass lens



6150WH
frost lens, white plastic trim



6150SN
frost lens, satin nickel
plastic trim



6150TBZ
frost lens, tuscan bronze
plastic trim

6160

drop opal plastic lens



6160WH
drop opal plastic lens,
white plastic trim

6162

drop opal plastic lens



6162WH
drop opal plastic lens with upper
reflector, white plastic trim

6230

squircle frost glass lens, metal trim



6230AH

frost glass lens,
aluminum haze squircle trim



6230PN

frost glass lens,
polished nickel squircle trim



6230SN

frost glass lens,
satin nickel squircle trim



6230TBZ

frost glass lens,
tuscan bronze squircle trim

6255

soft square, frost glass lens



6255WH

frost glass lens, white
plastic trim



6255SN

frost glass lens, satin nickel
plastic trim



6255TBZ

frost glass lens, tuscan bronze
plastic trim



Lighting Product Lines

Ametrix
AtLite
Corelite
Ephesus
Fail-Safe
Halo
Halo Commercial
Invue
io
Iris
Lumark
Lumière
McGraw-Edison
Metalux
MWS
Neo-Ray
Portfolio
RSA
Shaper
Streetworks
Sure-Lites

Our Controls Product Lines

Fifth Light Technology
Greengate
iLight (International Only)
iLumin
Zero 88

Connected Lighting Systems

Distributed Low-Voltage Power
HALO Home
iLumin Plus
Enlighted
WaveLinx
Trellix



Cooper Lighting Solutions

1121 Highway 74 South
Peachtree City, GA 30269
P: 770-486-4800
www.cooperlighting.com

Canada Sales

5925 McLaughlin Road
Mississauga, Ontario L5R 1B8
P: 905-501-3000
F: 905-501-3172

© 2020 Cooper Lighting Solutions
All Rights Reserved
Printed in USA
Publication No. BR518045EN
October 2020

Cooper Lighting Solutions is a registered trademark.

All other trademarks are property of their respective owners.

Product availability, specifications, and compliances are subject to change without notice.