

E26 6" Trim Series

DESCRIPTION

Frost glass dome lens trim with self-flange in the 6" trim family for use in recessed downlighting. Compatible for use in Halo and other housings.

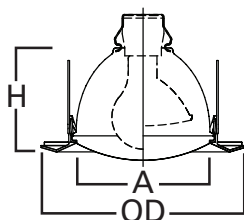
Catalog #		Type
Project		
Comments		Date
Prepared by		

SPECIFICATION FEATURES

- Low profile frost dome glass lens
- Wet location showerlight
- Torsion spring retention
- Non-conductive "Dead Front" polymer (plastic) trim ring and glass lens
- Socket supporting internal reflector
- Self-flanged trim ring sized to hide gaps caused by construction tolerances.

Housings	Max Lamp Compatibility
H7ICT H7ICAT	
H7RICT H7RICAT	29W A19, 39W PAR30S
E7ICAT E7RICAT	
H7UICAT	43W A19, 50W PAR30S
H7ICTNB	
H7ICATNB	29W A19, 39W PAR30S
E7ICATNB	
H27ICAT E27ICAT	29W A19, 39W PAR30S
H27RICAT E27RICAT	
H7T E7TAT	60W A19, 60W PAR30S
H7TCP H7RT E7RTAT	
H7TNB E7TATNB	60W A19, 60W PAR30S
H27T E27TAT	60W A19, 60W PAR30S
H27RT E27RTAT	

Compatible with Halogen, Incandescent, LED* or CFL* lamps.



Dimensions:

A: 5-1/8" [130mm]

H: 4-1/5" [107mm]

OD: 7-3/4" [197mm]

ORDERING INFORMATION

SAMPLE NUMBER: 6150WH

Trim	Finish
6150= 6" Frost Dome Glass Lens, Self-flange	WH=White trim SN=Satin nickel trim TBZ=Tuscan bronze trim

HALO HOUSING COMPATIBILITY

Trim #	Style	H7ICT	H7ICAT	H7RICT	H7RICAT	E7ICAT	E7RICAT	H7UICAT	H7ICTNB
6150	Showerlight	•	•	•	•	•	•	•	•
		H7ICATNB	E7ICATNB	H27ICAT	H27RICAT	E27ICAT	E27RICAT		
		•	•	•	•	•	•		
		H7T	H7TCP	H7RT	E7TAT	E7RTAT	H7TNB	E7TATNB	H27T
•	•	•	•	•	•	•	•	•	
		H27RT	E27TAT	E27RTAT					
•	•	•							

For use in select other's housings, refer to U.L. classification list at www.eaton.com/lighting/legal.

*UL1993 listed LED & CFL equivalent lamps permitted. Consult lamp manufacturer for conditions of use. Eaton does not warranty the lamp.



6150WH
White Reflector



6150SN
Satin Nickel Reflector



6150TBZ
Tuscan Bronze Reflector

6150

6-Inch Frost Dome
Glass Lens,
Self-flange



Select trims are classified for use in others housings. See www.eaton.com/lighting/legal.

E26 6" Trim Series

DESCRIPTION

Frost glass dome lens trim with self-flange in the 6" trim family for use in recessed downlighting. Compatible for use in Halo and other housings.

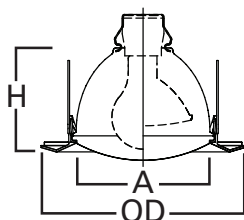
Catalog #		Type
Project		
Comments		Date
Prepared by		

SPECIFICATION FEATURES

- Low profile frost dome glass lens
- Wet location showerlight
- Torsion spring retention
- Non-conductive "Dead Front" polymer (plastic) trim ring and glass lens
- Socket supporting internal reflector
- Self-flanged trim ring sized to hide gaps caused by construction tolerances.

Housings	Max Lamp Compatibility
H7ICT H7ICAT	
H7RICT H7RICAT	29W A19, 39W PAR30S
E7ICAT E7RICAT	
H7UICAT	43W A19, 50W PAR30S
H7ICTNB	
H7ICATNB	29W A19, 39W PAR30S
E7ICATNB	
H27ICAT E27ICAT	29W A19, 39W PAR30S
H27RICAT E27RICAT	
H7T E7TAT	60W A19, 60W PAR30S
H7TCP H7RT E7RTAT	
H7TNB E7TATNB	60W A19, 60W PAR30S
H27T E27TAT	60W A19, 60W PAR30S
H27RT E27RTAT	

Compatible with Halogen, Incandescent, LED* or CFL* lamps.



Dimensions:

A: 5-1/8" [130mm]

H: 4-1/5" [107mm]

OD: 7-3/4" [197mm]

ORDERING INFORMATION

SAMPLE NUMBER: 6150WH

Trim	Finish
6150= 6" Frost Dome Glass Lens, Self-flange	WH=White trim SN=Satin nickel trim TBZ=Tuscan bronze trim

HALO HOUSING COMPATIBILITY

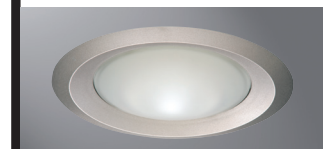
Trim #	Style	H7ICT	H7ICAT	H7RICT	H7RICAT	E7ICAT	E7RICAT	H7UICAT	H7ICTNB
6150	Showerlight	•	•	•	•	•	•	•	•
		H7ICATNB	E7ICATNB	H27ICAT	H27RICAT	E27ICAT	E27RICAT		
		•	•	•	•	•	•		
		H7T	H7TCP	H7RT	E7TAT	E7RTAT	H7TNB	E7TATNB	H27T
•	•	•	•	•	•	•	•		
H27RT	E27TAT	E27RTAT							
•	•	•							

For use in select other's housings, refer to U.L. classification list at www.eaton.com/lighting/legal.

*UL1993 listed LED & CFL equivalent lamps permitted. Consult lamp manufacturer for conditions of use. Eaton does not warranty the lamp.



6150WH
White Reflector



6150SN
Satin Nickel Reflector



6150TBZ
Tuscan Bronze Reflector

6150
6-Inch Frost Dome Glass Lens, Self-flange



Select trims are classified for use in others housings. See www.eaton.com/lighting/legal.