

## E26 6" Trim Series

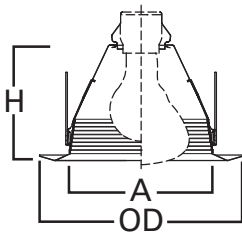
### DESCRIPTION

Shallow full cone baffle trim with self-flange in the 6" trim family for use in recessed downlighting. Compatible for use in Halo and other housings.

|             |  |      |
|-------------|--|------|
| Catalog #   |  | Type |
| Project     |  |      |
| Comments    |  | Date |
| Prepared by |  |      |

### SPECIFICATION FEATURES

- Shallow full cone baffle for A19 and PAR30 lamps
- Torsion spring retention
- Socket supporting baffle
- Self-flanged trim ring sized to hide gaps caused by construction tolerances.
- Makes installation Air-Tite, with any compatible housing



### Dimensions:

A: 4-7/16" [113mm]

H: 4-3/8" [110mm]

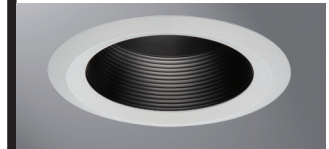
OD: 7-3/4" [197mm]

| Housings |          | Max Lamp Compatibility                       |
|----------|----------|--|
| H7ICT    | H7RICT   | 43W A19, 75W PAR30S,<br>75W PAR30L, 65W BR30 |
| H7ICAT   | H7RICAT  |  |
| E7ICAT   | E7RICAT  |  |
| H7UICAT  |          | 75W PAR30S, 75W PAR30L, 85W BR30             |
| H7ICTNB  |          | 43W A19, 75W PAR30S,<br>75W PAR30L, 65W BR30 |
| H7ICATNB |          |  |
| E7ICATNB |          |  |
| H27ICAT  | E27ICAT  | 40W A19, 60W PAR30S,<br>75W PAR30L, 65W BR30 |
| H27RICAT | E27RICAT |  |
| H7T      | E7TAT    | 40W A19, 75W PAR30S,<br>75W PAR30L, 65W BR30 |
| H7RT     | E7RTAT   | 40W A19, 75W PAR30S,<br>75W PAR30L, 85W BR30 |
| H7TNB    | E7TATNB  | 40W A19, 75W PAR30S,<br>75W PAR30L, 65W BR30 |
| H27T     | E27TAT   | 40W A19, 75W PAR30S,<br>75W PAR30L, 65W BR30 |
| H27RT    | E27RTAT  |  |

Compatible with Halogen, Incandescent, LED\* or CFL\* lamps.



**6126WB**  
White Baffle,  
White Trim



**6126BB**  
Black Baffle,  
White Trim

### 6126

6-Inch Shallow Full Cone  
Baffle, Self-flange



### ORDERING INFORMATION

SAMPLE NUMBER: 6126WB

| Trim   | Finish  |
|--|---|
| 6126= 6" Shallow Full Cone Baffle, Self-flange | WB=White baffle and trim<br>BB=Black baffle, White trim |

### HALO HOUSING COMPATIBILITY

| Trim # | Style  | H7ICT    | H7ICAT   | H7RICT  | H7RICAT  | E7ICAT  | E7RICAT  | H7UICAT | H7ICTNB |
|--------|--------|----------|----------|---------|----------|---------|----------|---------|---------|
| 6126   | Baffle | •        | •        | •       | •        | •       | •        | —       | •       |
|        |        | H7ICATNB | E7ICATNB | H27ICAT | H27RICAT | E27ICAT | E27RICAT |         |         |
|        |        | •        | •        | •       | •        | •       | •        |         |         |
|        |        | H7T      | H7TCP    | H7RT    | E7TAT    | E7RTAT  | H7TNB    | E7TATNB | H27T    |
|        |        | •        | —        | •       | •        | •       | •        | •       | •       |
| H27RT  | E27TAT | E27RTAT  |          |         |          |         |          |         |         |
| •      | •      | •        |          |         |          |         |          |         |         |

For use in select other's housings, refer to U.L. classification list at [www.eaton.com/lighting/legal](http://www.eaton.com/lighting/legal).

\*UL1993 listed LED & CFL equivalent lamps permitted. Consult lamp manufacturer for conditions of use. Eaton does not warranty the lamp.



For use in Halo listed housings.



Select trims are classified for use in others housings. See [www.eaton.com/lighting/legal](http://www.eaton.com/lighting/legal).

## E26 6" Trim Series

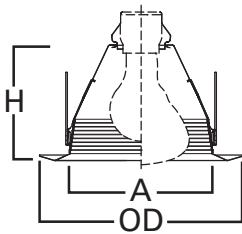
### DESCRIPTION

Shallow full cone baffle trim with self-flange in the 6" trim family for use in recessed downlighting. Compatible for use in Halo and other housings.

|             |  |      |
|-------------|--|------|
| Catalog #   |  | Type |
| Project     |  |      |
| Comments    |  | Date |
| Prepared by |  |      |

### SPECIFICATION FEATURES

- Shallow full cone baffle for A19 and PAR30 lamps
- Torsion spring retention
- Socket supporting baffle
- Self-flanged trim ring sized to hide gaps caused by construction tolerances.
- Makes installation Air-Tite, with any compatible housing



### Dimensions:

A: 4-7/16" [113mm]

H: 4-3/8" [110mm]

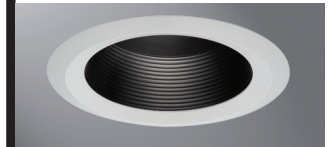
OD: 7-3/4" [197mm]

| Housings |          | Max Lamp Compatibility                    |
|----------|----------|---|
| H7ICT    | H7RICT   |   |
| H7ICAT   | H7RICAT  | 43W A19, 75W PAR30S, 75W PAR30L, 65W BR30 |
| E7ICAT   | E7RICAT  |   |
| H7UICAT  |          | 75W PAR30S, 75W PAR30L, 85W BR30          |
| H7ICTNB  |          |   |
| H7ICATNB |          | 43W A19, 75W PAR30S, 75W PAR30L, 65W BR30 |
| E7ICATNB |          |   |
| H27ICAT  | E27ICAT  | 40W A19, 60W PAR30S, 75W PAR30L, 65W BR30 |
| H27RICAT | E27RICAT |   |
| H7T      | E7TAT    | 40W A19, 75W PAR30S, 75W PAR30L, 65W BR30 |
| H7RT     | E7RTAT   | 40W A19, 75W PAR30S, 75W PAR30L, 85W BR30 |
| H7TNB    | E7TATNB  | 40W A19, 75W PAR30S, 75W PAR30L, 65W BR30 |
| H27T     | E27TAT   | 40W A19, 75W PAR30S, 75W PAR30L, 65W BR30 |
| H27RT    | E27RTAT  |   |

Compatible with Halogen, Incandescent, LED\* or CFL\* lamps.



**6126WB**  
White Baffle,  
White Trim



**6126BB**  
Black Baffle,  
White Trim

### 6126

6-Inch Shallow Full Cone  
Baffle, Self-flange



### ORDERING INFORMATION

SAMPLE NUMBER: 6126WB

| Trim   | Finish  |
|--|---|
| 6126= 6" Shallow Full Cone Baffle, Self-flange | WB=White baffle and trim<br>BB=Black baffle, White trim |

### HALO HOUSING COMPATIBILITY

| Trim # | Style  | H7ICT    | H7ICAT   | H7RICT  | H7RICAT  | E7ICAT  | E7RICAT  | H7UICAT | H7ICTNB |
|--------|--------|----------|----------|---------|----------|---------|----------|---------|---------|
| 6126   | Baffle | •        | •        | •       | •        | •       | •        | —       | •       |
|        |        | H7ICATNB | E7ICATNB | H27ICAT | H27RICAT | E27ICAT | E27RICAT |         |         |
|        |        | •        | •        | •       | •        | •       | •        |         |         |
|        |        | H7T      | H7TCP    | H7RT    | E7TAT    | E7RTAT  | H7TNB    | E7TATNB | H27T    |
|        |        | •        | —        | •       | •        | •       | •        | •       | •       |
| H27RT  | E27TAT | E27RTAT  |          |         |          |         |          |         |         |
| •      | •      | •        |          |         |          |         |          |         |         |

For use in select other's housings, refer to U.L. classification list at [www.eaton.com/lighting/legal](http://www.eaton.com/lighting/legal).

\*UL1993 listed LED & CFL equivalent lamps permitted. Consult lamp manufacturer for conditions of use. Eaton does not warranty the lamp.



For use in Halo listed housings.



Select trims are classified for use in others housings. See [www.eaton.com/lighting/legal](http://www.eaton.com/lighting/legal).