

E26 6" Trim Series

DESCRIPTION

Straight metal baffle trim with self-flange in the 6" trim family for use in recessed downlighting. Compatible for use in Halo and other housings.

Catalog #		Type
Project		
Comments		Date
Prepared by		

SPECIFICATION FEATURES

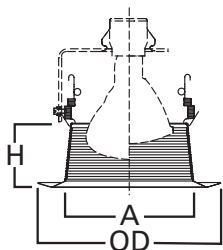
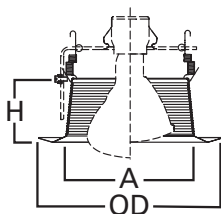
- Straight sides of metal baffle for large diameter lamps
- Coil spring retention
- Self-flanged trim ring sized to hide gaps caused by construction tolerances.

Housings		Max Lamp Compatibility
H7ICT	H7RICT	50W PAR30S, 75W PAR30L, 45W
H7ICAT	H7RICAT	PAR38, 65W BR30,
E7ICAT	E7RICAT	65W BR40
H7UICAT		75W PAR30S, 75W PAR30L, 90W PAR38, 65W BR30, 90W BR40
H27ICAT	E27ICAT	50W PAR30S, 75W PAR30L,
H27RICAT	E27RICAT	60W BR30
H7T	E7TAT	75W PAR30S, 75W PAR30L, 150W PAR38, 65W BR30, 120W BR40
H7TCP	E7RTAT	75W PAR30S, 75W PAR30L, 120W PAR38, 65W BR30, 120W BR40
H27T	E27TAT	75W PAR30S, 75W PAR30L, 65W BR30
H27RT	E27RTAT	

Compatible with Halogen, Incandescent, LED* or CFL* lamps.

IC

Non-IC



Dimensions:

A: 5-7/16" [138mm]

H: 2-11/16" [68mm]

OD: 7-3/4" [197mm]

ORDERING INFORMATION

SAMPLE NUMBER: 6103WB

Trim	Finish
6103= 6" Straight Metal Baffle, Self-flange	WB=White baffle, White trim BB=Black baffle, White trim

HALO HOUSING COMPATIBILITY

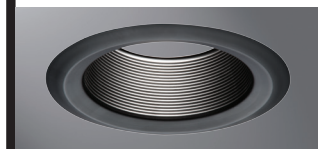
Trim #	Style	H7ICT	H7ICAT	H7RICT	H7RICAT	E7ICAT	E7RICAT	H7UICAT	H7ICTNB
6103	Baffle	•	•	•	•	•	•	•	—
		H7ICATNB	E7ICATNB	H27ICAT	H27RICAT	E27ICAT	E27RICAT		
		—	—	•	•	•	•		
		H7T	H7TCP	H7RT	E7TAT	E7RTAT	H7TNB	E7TATNB	H27T
		•	•	•	•	•	—	—	•
H27RT	E27TAT	E27RTAT							
•	•	•							

For use in select other's housings, refer to U.L. Classification list at www.eaton.com/lighting/legal.

*UL1993 listed LED & CFL equivalent lamps permitted. Consult lamp manufacturer for conditions of use. Eaton does not warranty the lamp.



6103WB
White Baffle,
White Trim



6103BB
Black Baffle,
White Trim

6103

6-Inch Straight Metal Baffle



For use in Halo listed housings.



Select trims are classified for use in others housings. See www.eaton.com/lighting/legal.

E26 6" Trim Series

DESCRIPTION

Straight metal baffle trim with self-flange in the 6" trim family for use in recessed downlighting. Compatible for use in Halo and other housings.

Catalog #		Type
Project		
Comments		Date
Prepared by		

SPECIFICATION FEATURES

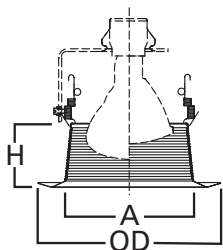
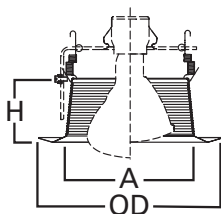
- Straight sides of metal baffle for large diameter lamps
- Coil spring retention
- Self-flanged trim ring sized to hide gaps caused by construction tolerances.

Housings		Max Lamp Compatibility
H7ICT	H7RICT	50W PAR30S, 75W PAR30L, 45W
H7ICAT	H7RICAT	PAR38, 65W BR30,
E7ICAT	E7RICAT	65W BR40
H7UICAT		75W PAR30S, 75W PAR30L, 90W PAR38, 65W BR30, 90W BR40
H27ICAT	E27ICAT	50W PAR30S, 75W PAR30L,
H27RICAT	E27RICAT	60W BR30
H7T	E7TAT	75W PAR30S, 75W PAR30L, 150W PAR38, 65W BR30, 120W BR40
H7TCP	E7RTAT	75W PAR30S, 75W PAR30L, 120W PAR38, 65W BR30, 120W BR40
H27T	E27TAT	75W PAR30S, 75W PAR30L, 65W BR30
H27RT	E27RTAT	

Compatible with Halogen, Incandescent, LED* or CFL* lamps.

IC

Non-IC



Dimensions:

A: 5-7/16" [138mm]

H: 2-11/16" [68mm]

OD: 7-3/4" [197mm]

ORDERING INFORMATION

SAMPLE NUMBER: 6103WB

Trim	Finish
6103= 6" Straight Metal Baffle, Self-flange	WB=White baffle, White trim BB=Black baffle, White trim

HALO HOUSING COMPATIBILITY

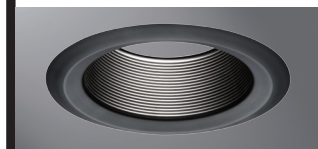
Trim #	Style	H7ICT	H7ICAT	H7RICT	H7RICAT	E7ICAT	E7RICAT	H7UICAT	H7ICTNB
6103	Baffle	•	•	•	•	•	•	•	—
		H7ICATNB	E7ICATNB	H27ICAT	H27RICAT	E27ICAT	E27RICAT		
		—	—	•	•	•	•		
		H7T	H7TCP	H7RT	E7TAT	E7RTAT	H7TNB	E7TATNB	H27T
		•	•	•	•	•	—	—	•
H27RT	E27TAT	E27RTAT							
•	•	•							

For use in select other's housings, refer to U.L. Classification list at www.eaton.com/lighting/legal.

*UL1993 listed LED & CFL equivalent lamps permitted. Consult lamp manufacturer for conditions of use. Eaton does not warranty the lamp.



6103WB
White Baffle,
White Trim



6103BB
Black Baffle,
White Trim

6103

6-Inch Straight Metal Baffle



Select trims are classified for use in other housings. See www.eaton.com/lighting/legal.